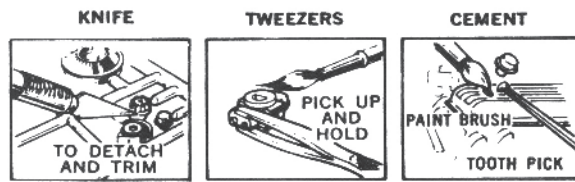


# Super Sno-Sport

## BEFORE YOU BEGIN GET YOUR TOOLS READY:



**PAINTING NOTE:** Plan your trim scheme prior to starting your model. Small parts should be painted before you remove them from runners.

Be sure that all paint is dry before handling.

★ THERMO RUBBER:

② NON-PLATED

② PLATED

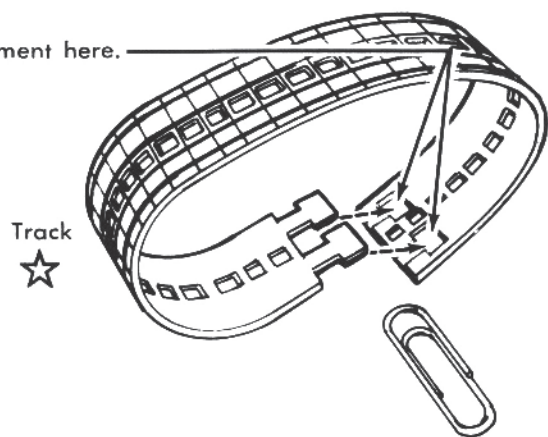
STARTING SYMBOLS

★ ① NON-PLATED

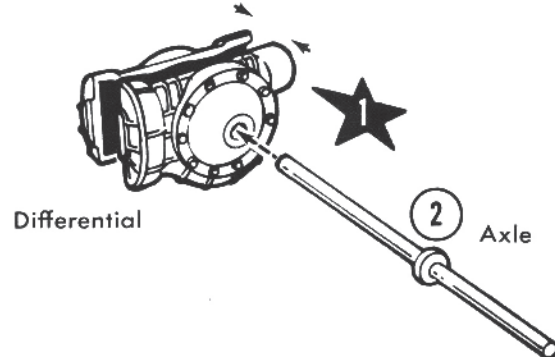
★ PLATED

## 1.

1. Apply cement here.

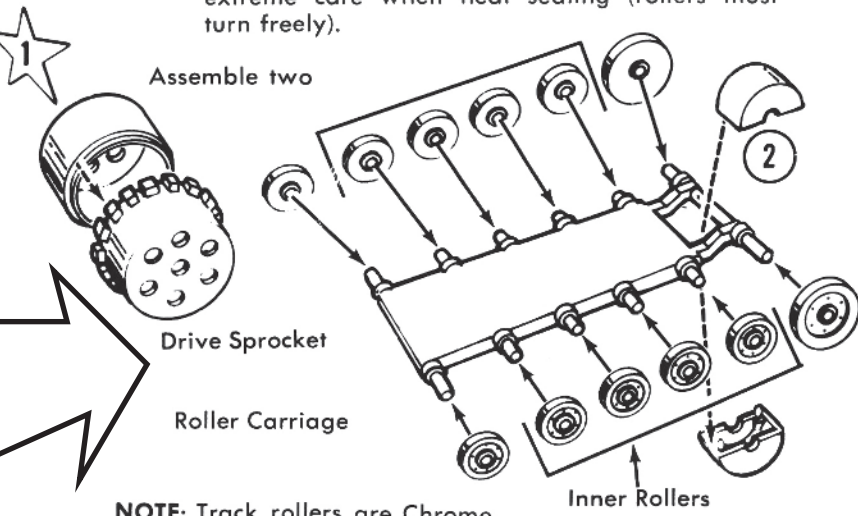


## 2.

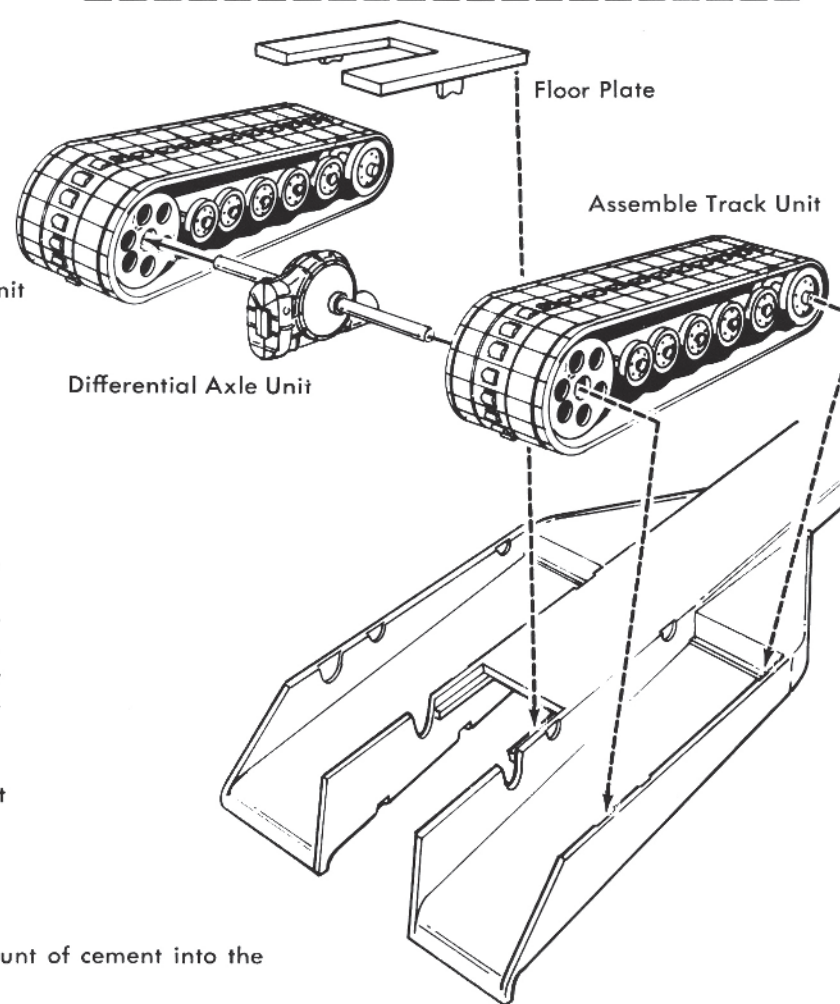


## 3.

③ Place (Do not cement) roller guides onto pins. If you wish you may secure the four inner guides by heat sealing with a heated screw driver. Use extreme care when heat sealing (rollers must turn freely).



NOTE: Track rollers are Chrome.



## 4.

### SPECIAL INSTRUCTIONS

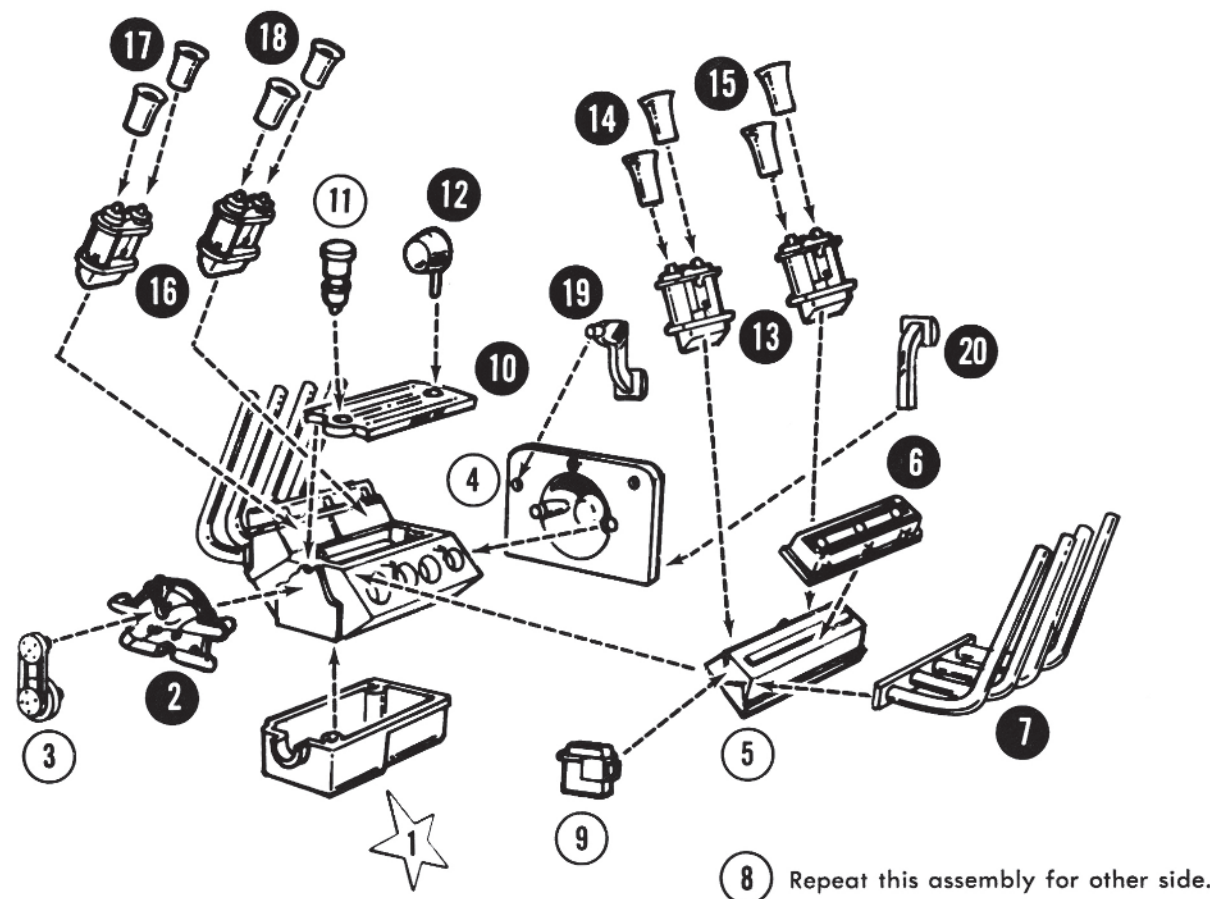
Please Read Carefully

- Place roller carriages, with all rollers attached, into tracks.
- Place assembled drive sprocket into assembled track units so they resemble illustrations.
- Slide track units onto differential axle unit and into underside of body as one unit. Secure with floor plate.

Check movement of track, it should be firm, but able to roll.

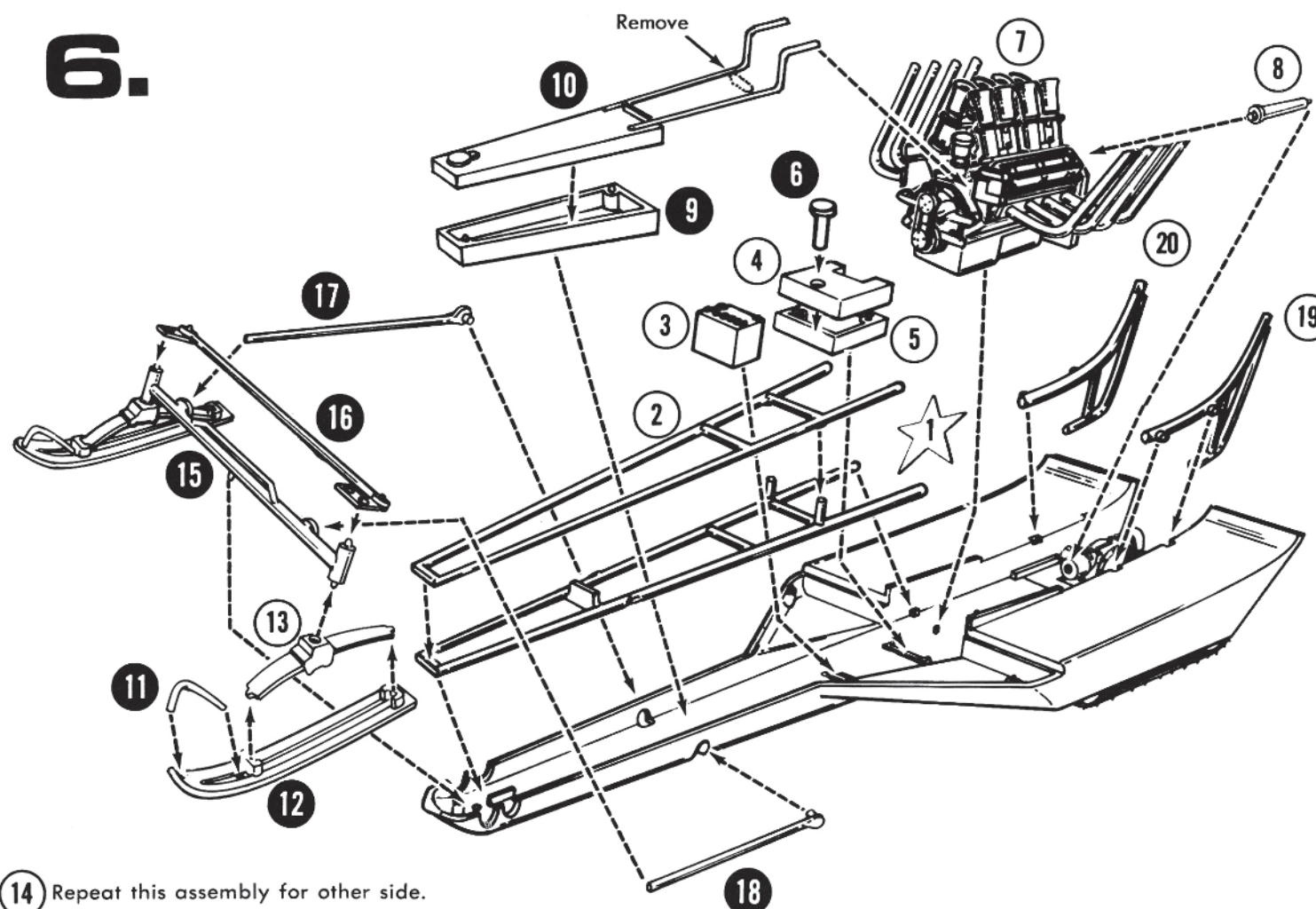
NOTE: Apply a small amount of cement into the slots.

## 5.



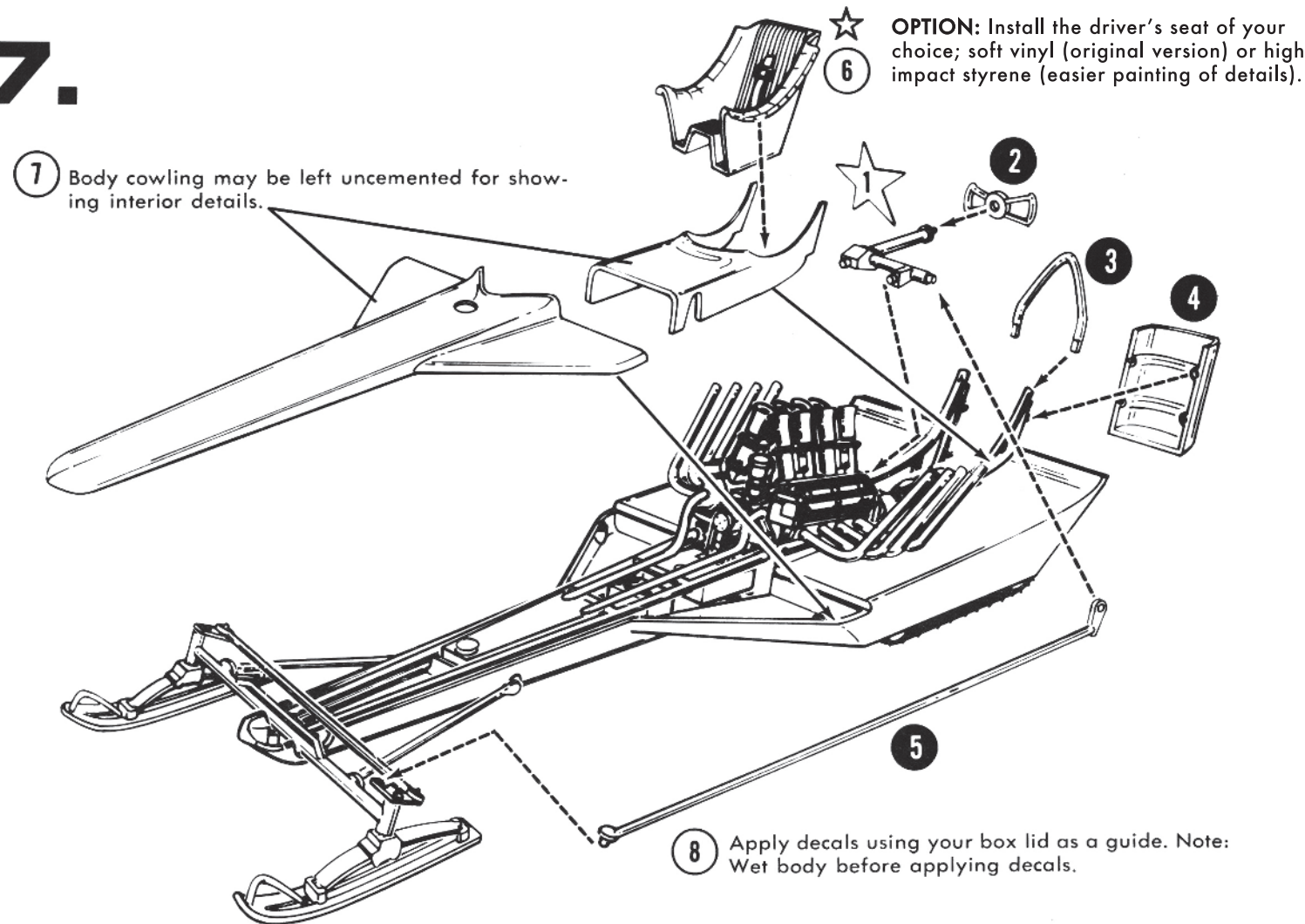
⑧ Repeat this assembly for other side.

## 6.



⑭ Repeat this assembly for other side.

## 7.



⑧ Apply decals using your box lid as a guide. Note: Wet body before applying decals.