



1/25 SCALE

DAISY DUKE'S ROADRUNNER

# THE DUKES OF HAZZARD™

## IMPORTANT! READ THIS FIRST

- Study assembly drawings carefully before starting.
- Each part is identified by a part number (14).
- Plated parts will be identified by a star beside part number (\*110).
- Scrape paint and plating from areas to be cemented.
- Before cement is used, check the fit of each part.
- Use only enough cement to join parts.
- Apply cement to small parts with a toothpick.
- Use cement made for styrene plastic only.
- Allow paint to dry thoroughly before handling.
- Your model may be painted to match the box photos.
- Cement all parts except where Do Not Cement symbol ☒ is shown.
- Follow the step numbers ➊ in each assembly drawing.
- ★ Refer to other assembly drawing for location.

### PAINTING GUIDE

A	SILVER
B	FLAT BLACK
C	GLOSS BLACK
D	WHITE
E	GRAY
F	TAN
G	RED
H	YELLOW
I	ORANGE
J	BLUE

➊ — STEP NUMBERS

32 — PLASTIC PART NUMBERS

\*132 — PLATED PART NUMBERS

➦ — OPTIONAL

☒ — DO NOT CEMENT

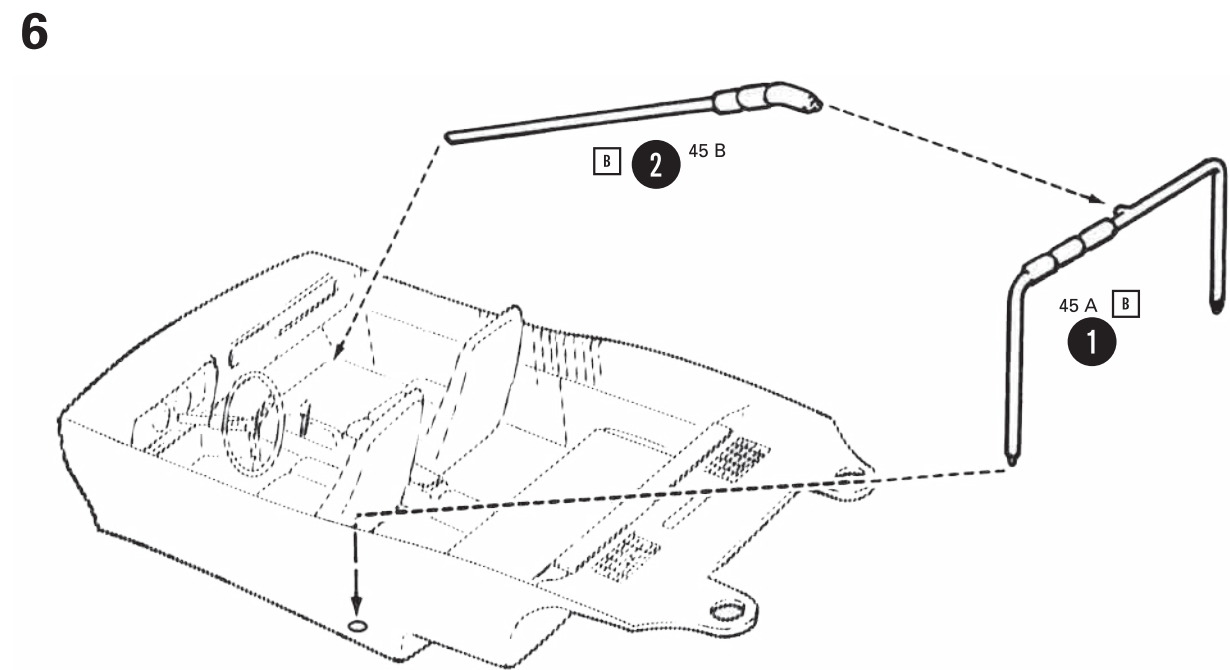
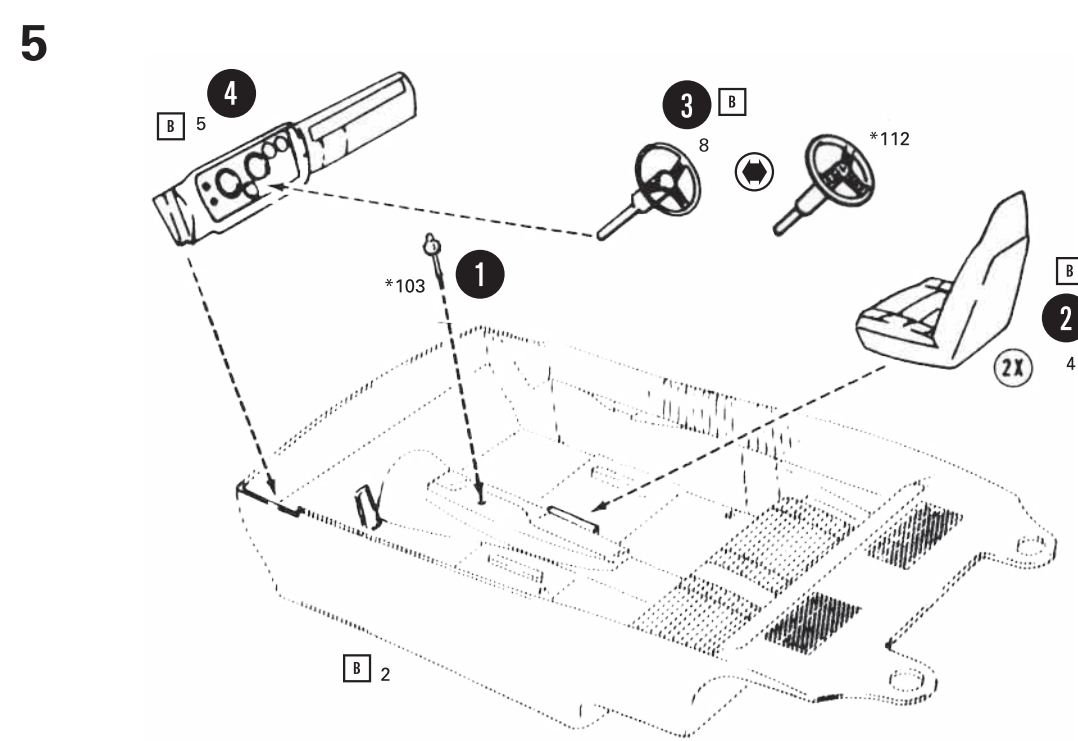
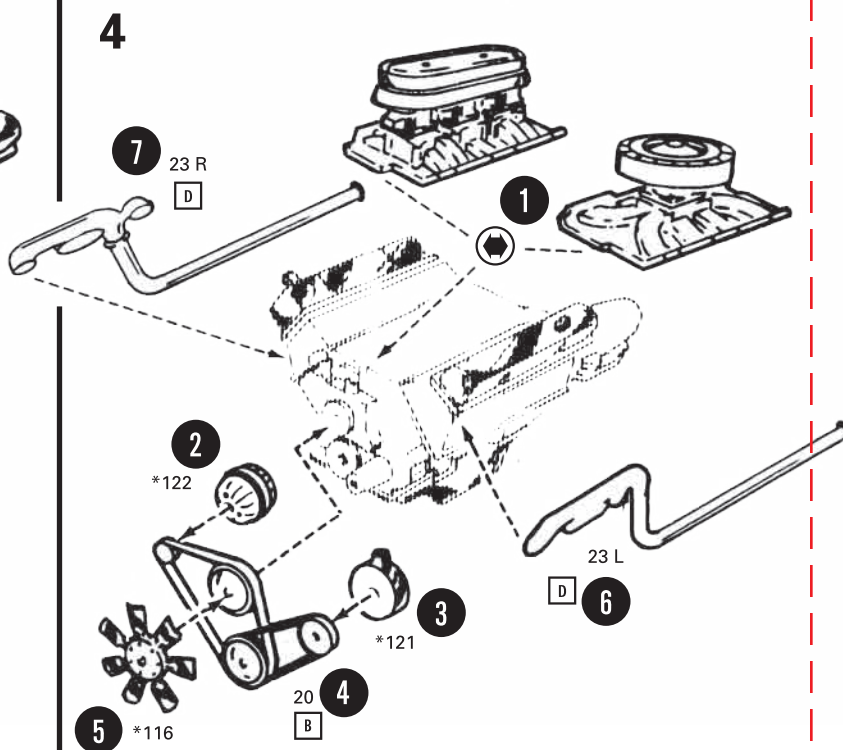
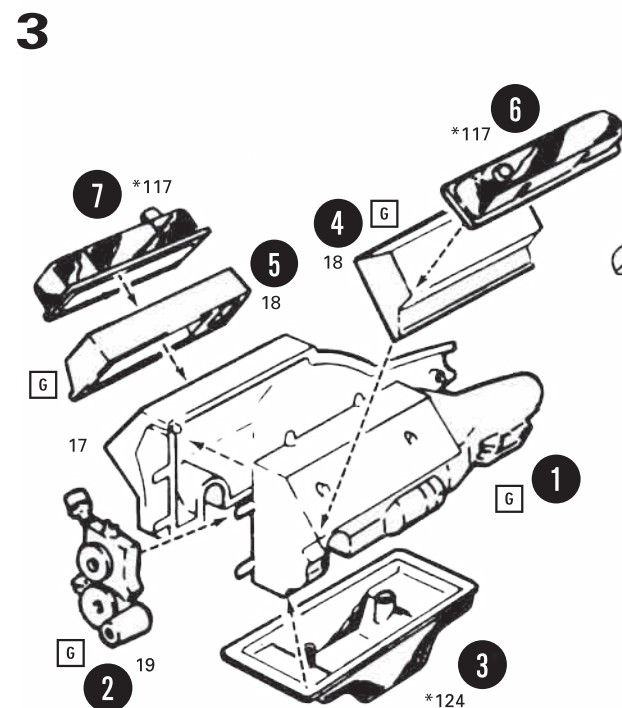
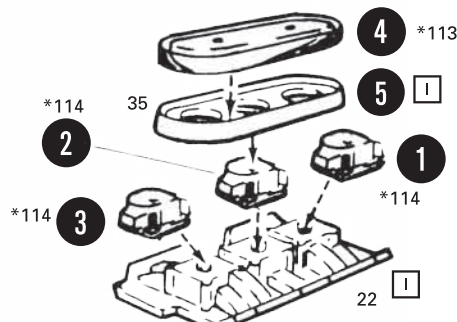
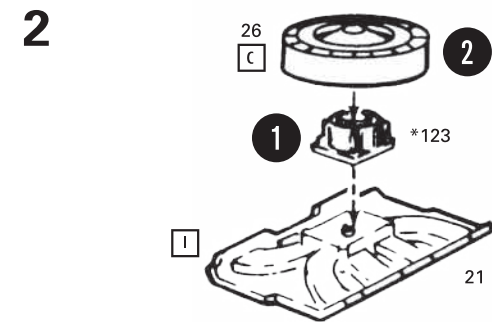
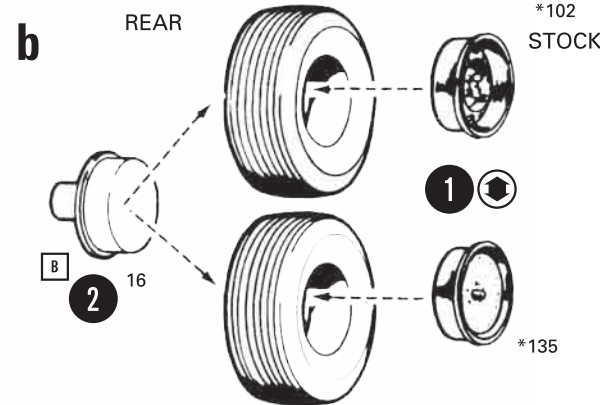
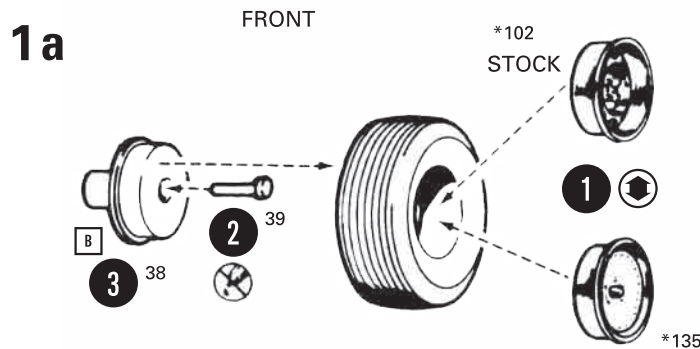
➦ — CEMENT HERE ONLY

2X — REPEAT SEVERAL TIMES

➦ — REMOVE

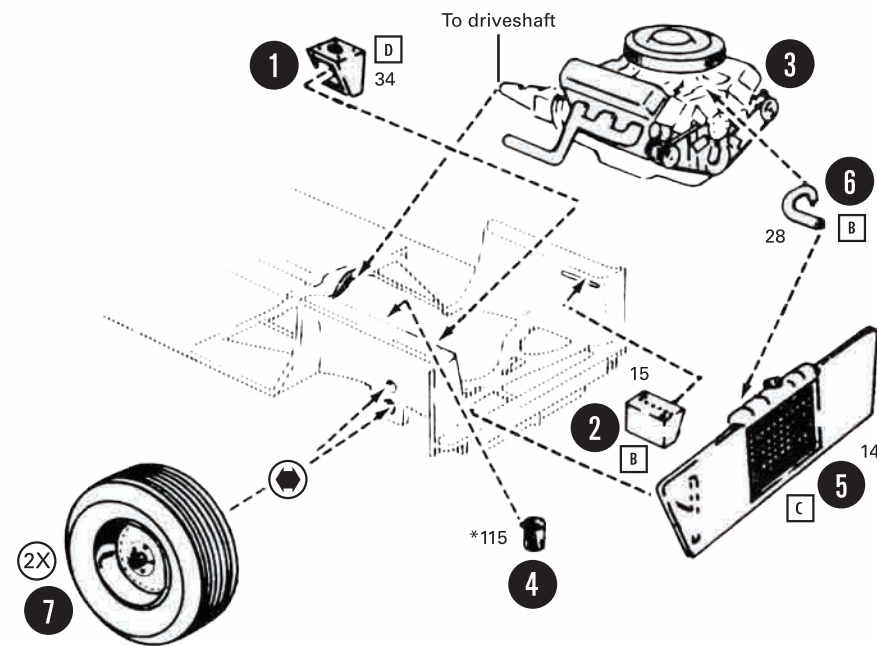
★ — REFER TO ...

➦ — DECAL

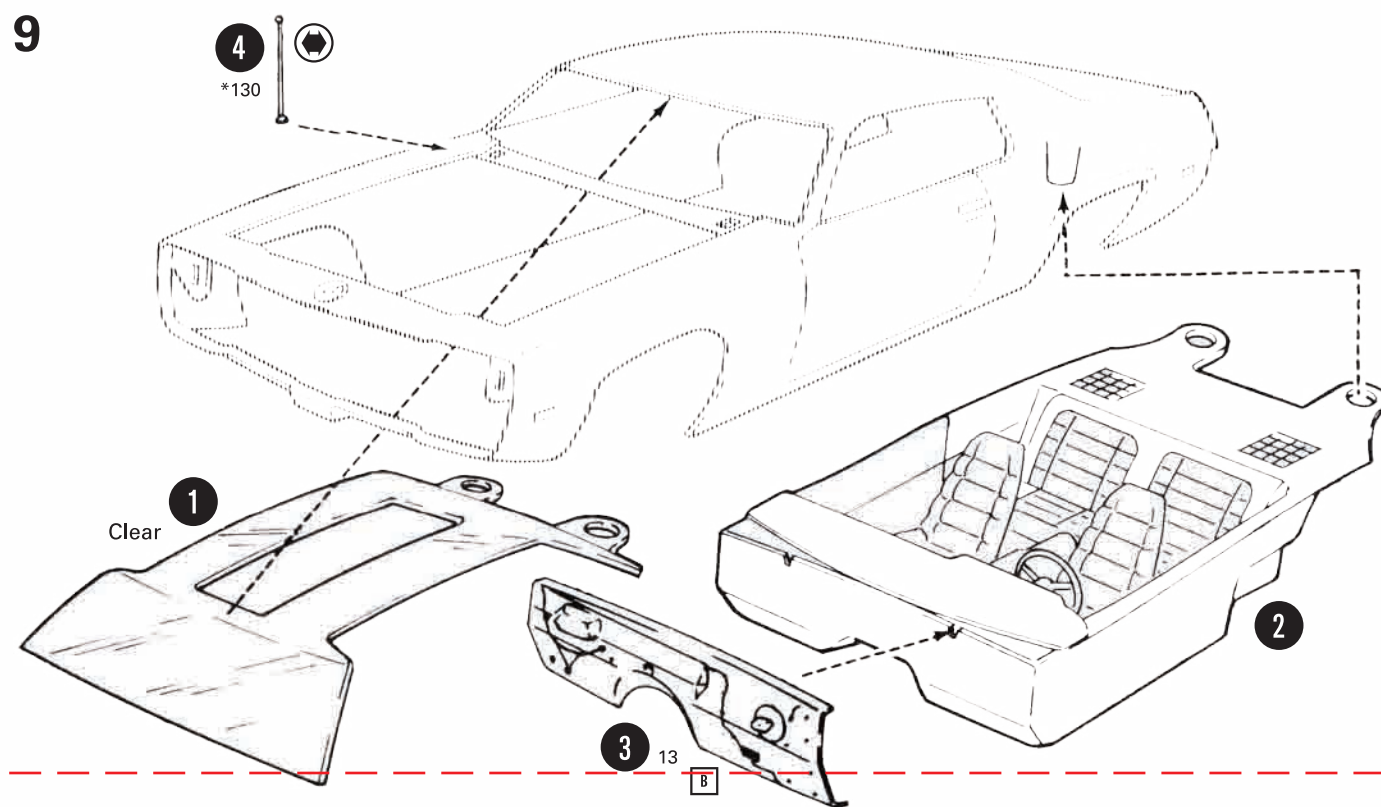




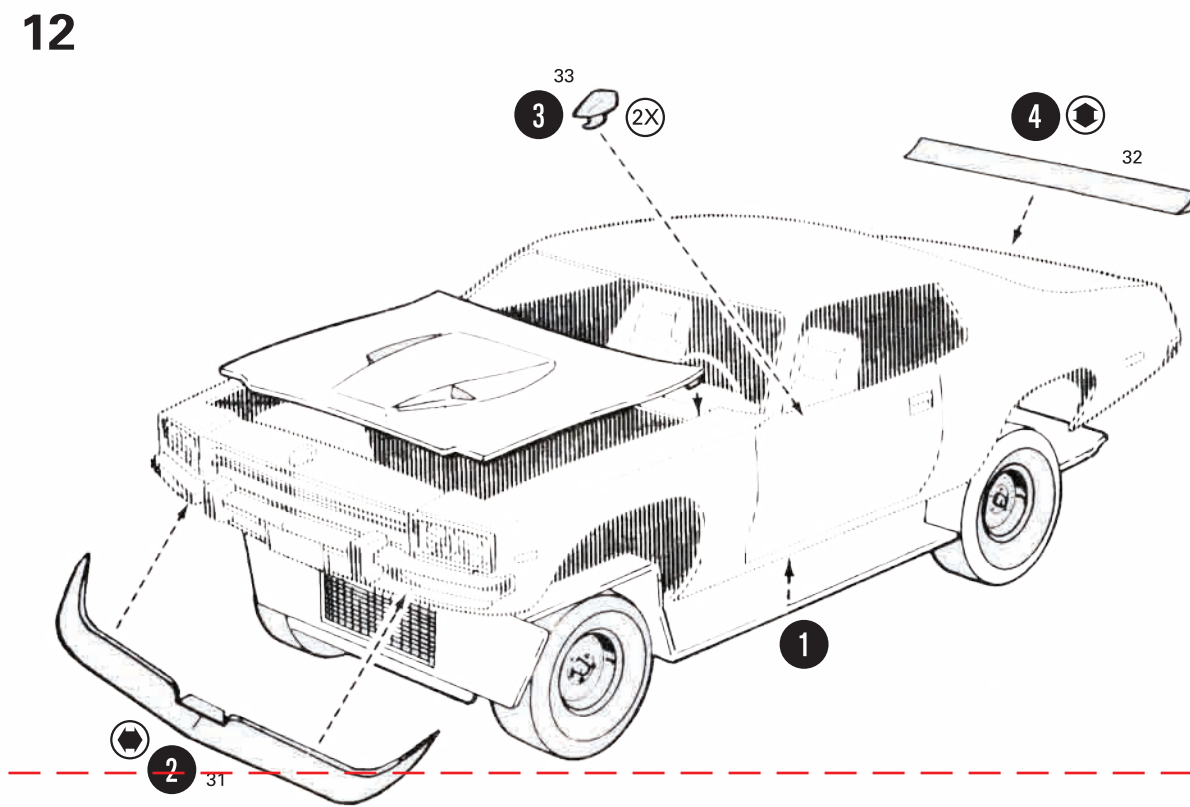
7



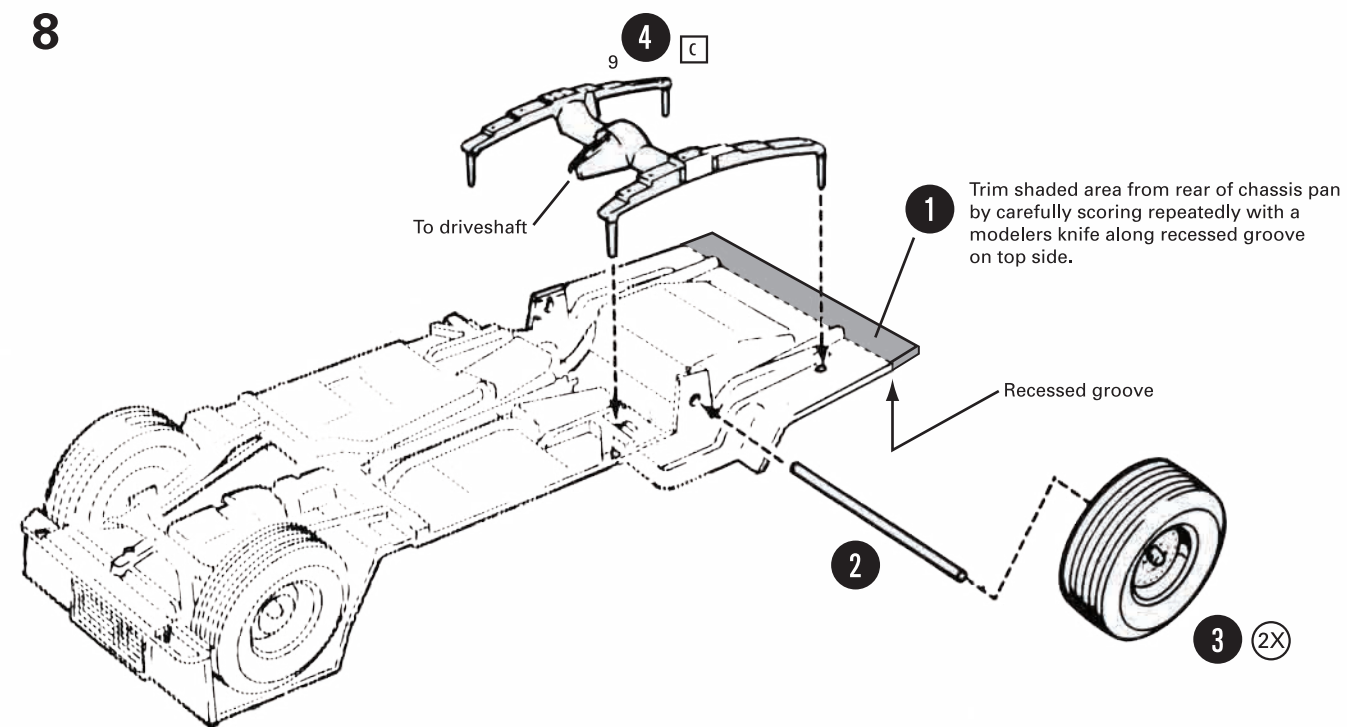
9



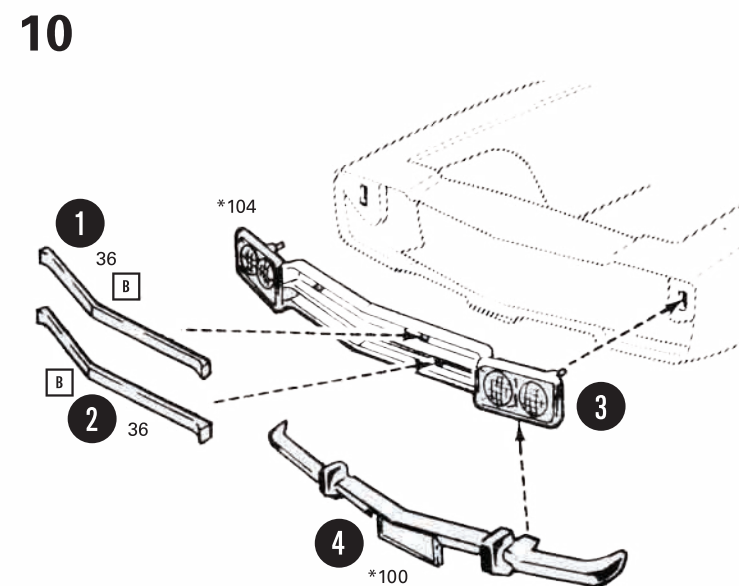
12



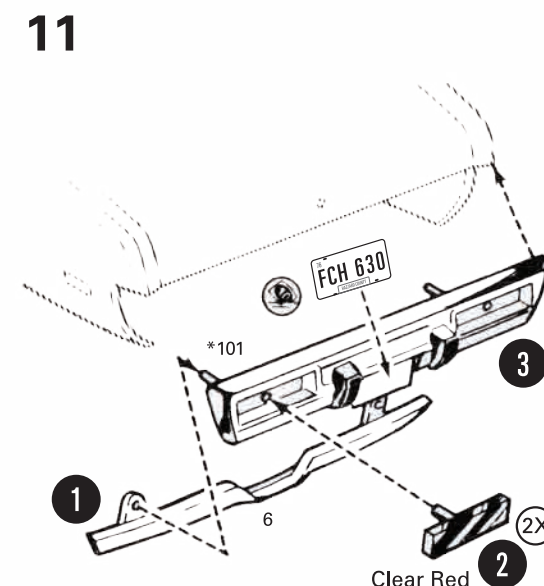
8



10



11



13 DECALS

