



M710-200

# 1967 PONTIAC® GTO®

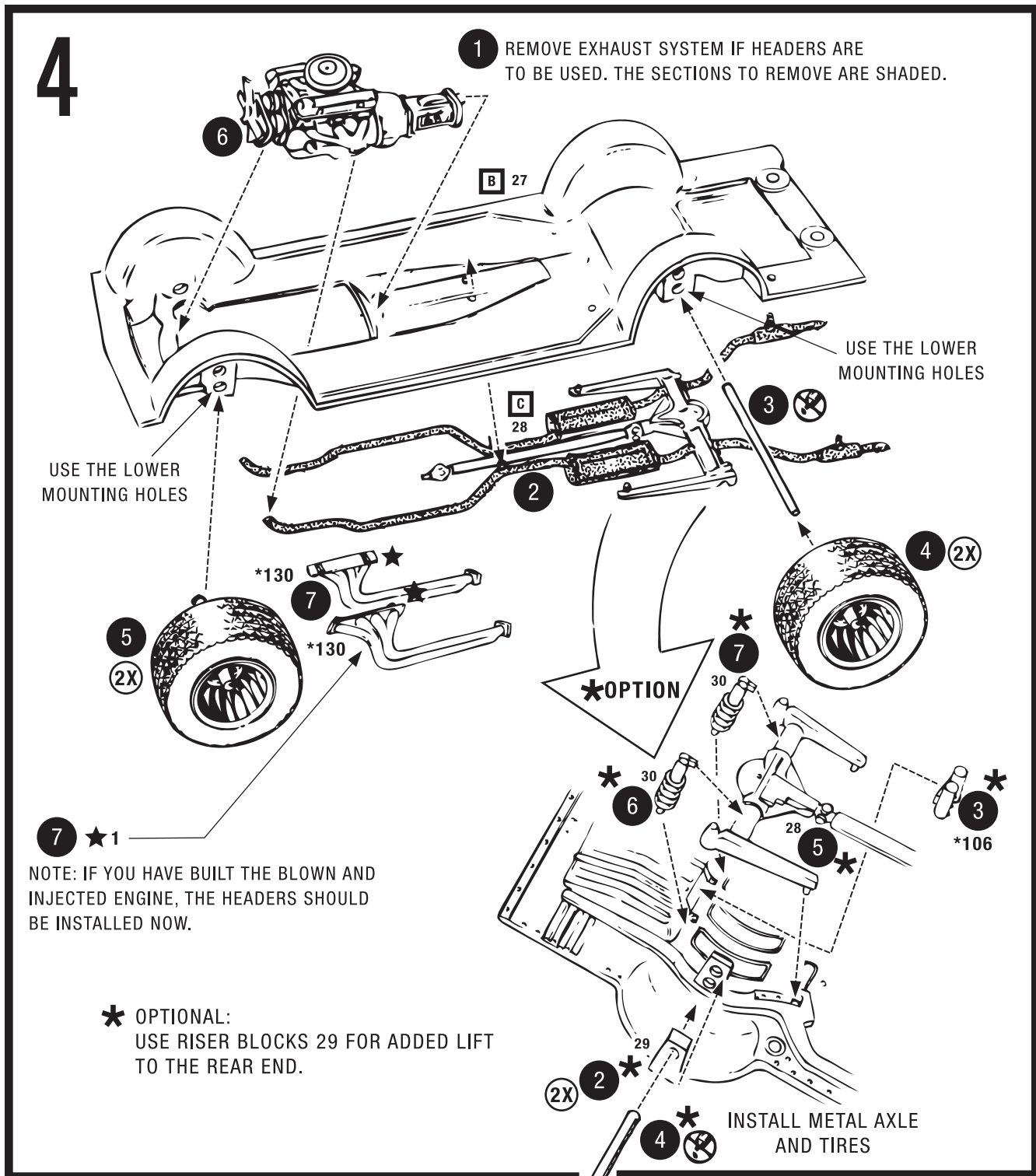
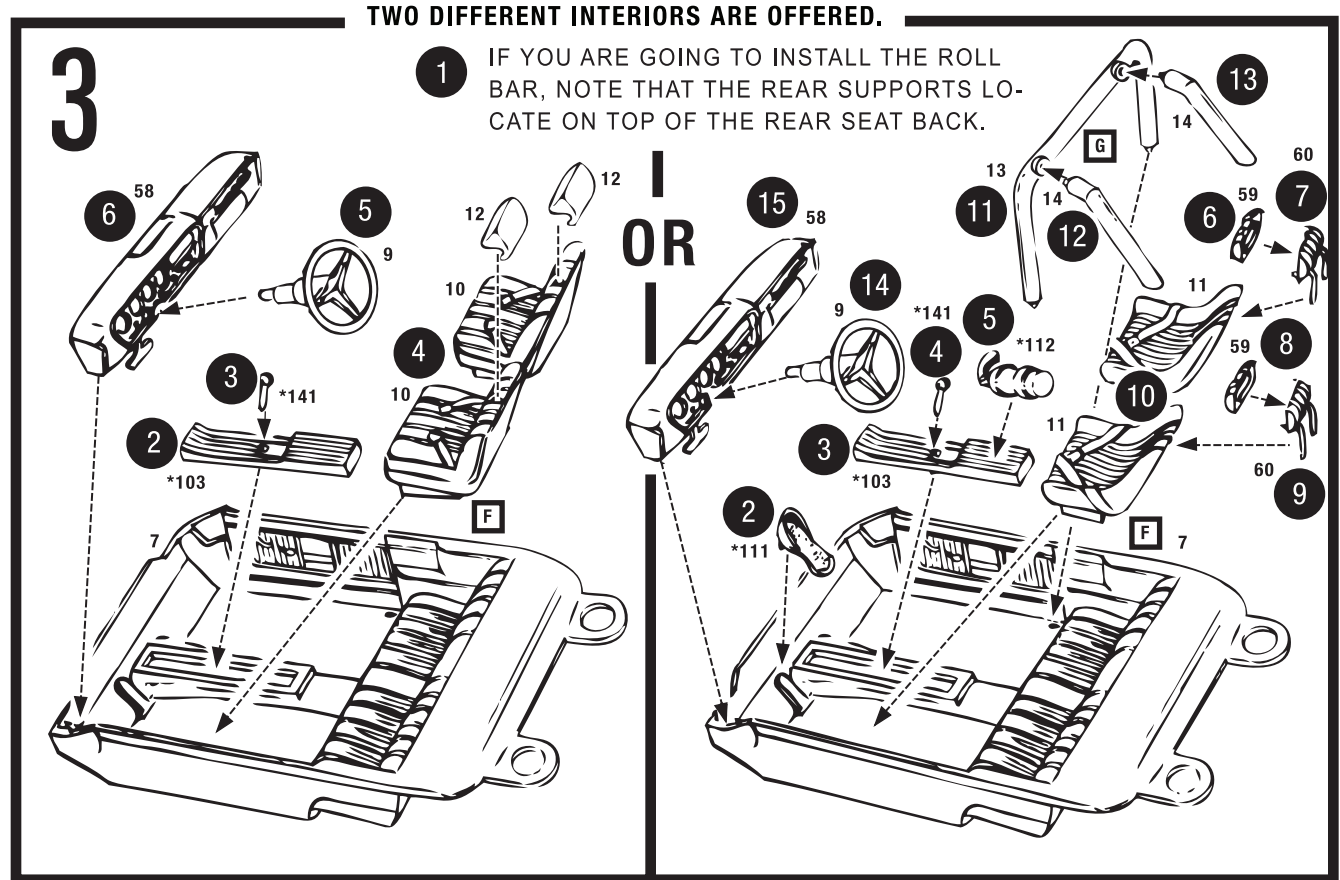
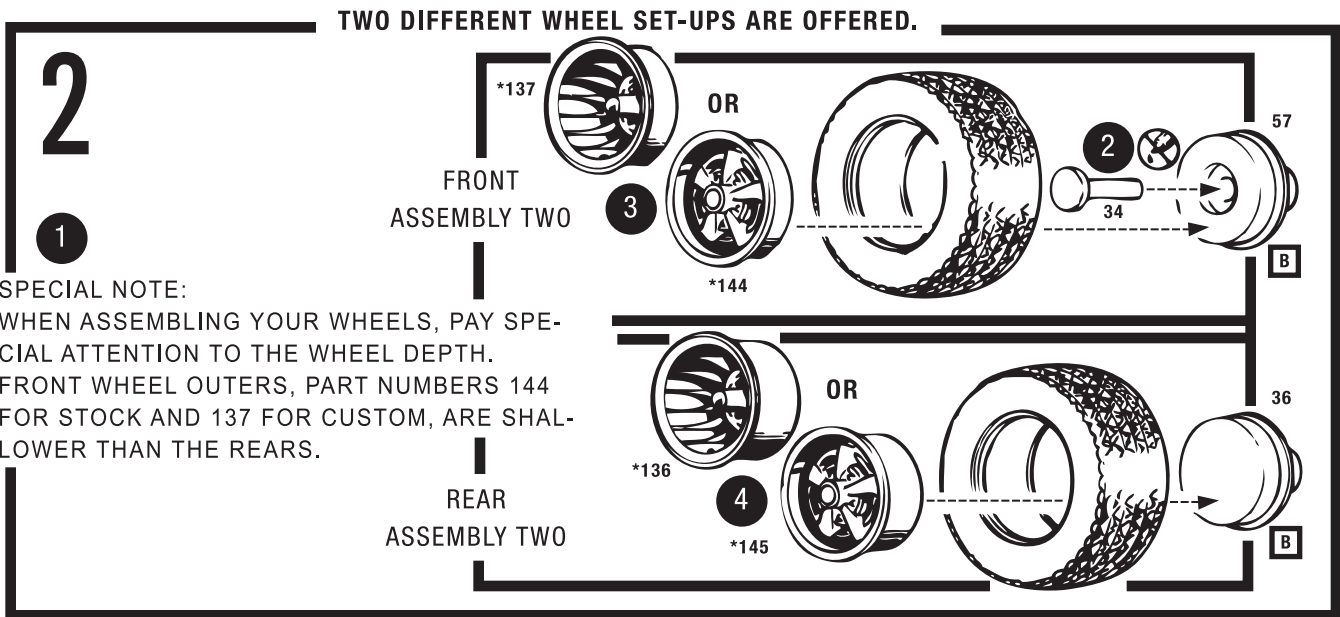
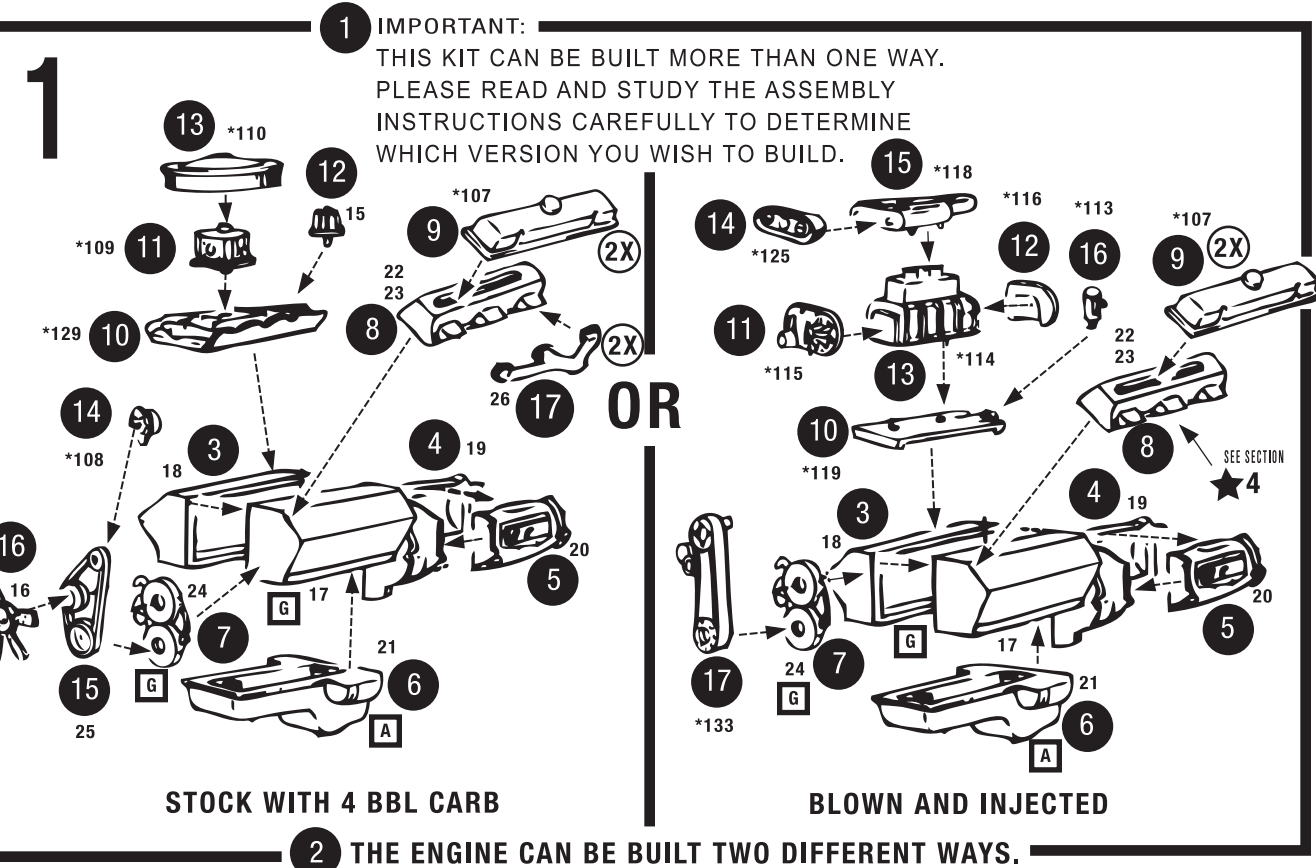
1/25 SCALE MODEL

## IMPORTANT! READ THIS FIRST

- Study assembly drawings carefully before starting.
- Each part is identified by a part number (14).
- Plated parts will be identified by a star beside part number (\*110).
- Scrape paint and plating from areas to be cemented.
- Before cement is used, check the fit of each part.
- Use only enough cement to join parts.
- Apply cement to small parts with a toothpick.
- Use cement made for styrene plastic only.
- Allow paint to dry thoroughly before handling.
- Your model may be painted to match the box photos.
- Cement all parts except where Do Not Cement symbol ☒ is shown.
- Follow the step numbers 5 in each assembly drawing.
- ★ Refer to other assembly drawing for location.

A	SILVER
B	FLAT BLACK
C	GLOSS BLACK
D	WHITE
E	GREY
F	TAN
G	RED

- 5 ————— STEP NUMBERS  
32 ————— PLASTIC PART NUMBERS  
\*132 ————— PLATED PART NUMBERS
- ☒ ————— DO NOT CEMENT  
☒ ————— DO NOT CEMENT  
☒ ————— DO NOT CEMENT
- ☒ ————— CEMENT HERE ONLY  
☒ ————— CEMENT HERE ONLY  
☒ ————— CEMENT HERE ONLY
- 2X ————— REPEAT SEVERAL TIMES  
2X ————— REPEAT SEVERAL TIMES  
2X ————— REPEAT SEVERAL TIMES
- ☒ ————— REMOVE  
☒ ————— REMOVE  
☒ ————— REMOVE
- ★ ————— REFER TO.....  
★ ————— REFER TO.....  
★ ————— REFER TO.....
- ☒ ————— DECAL  
☒ ————— DECAL  
☒ ————— DECAL





5

1

2

3

4

62

63

143

PONTIAC

STO

RED CLEAR

RED CLEAR