

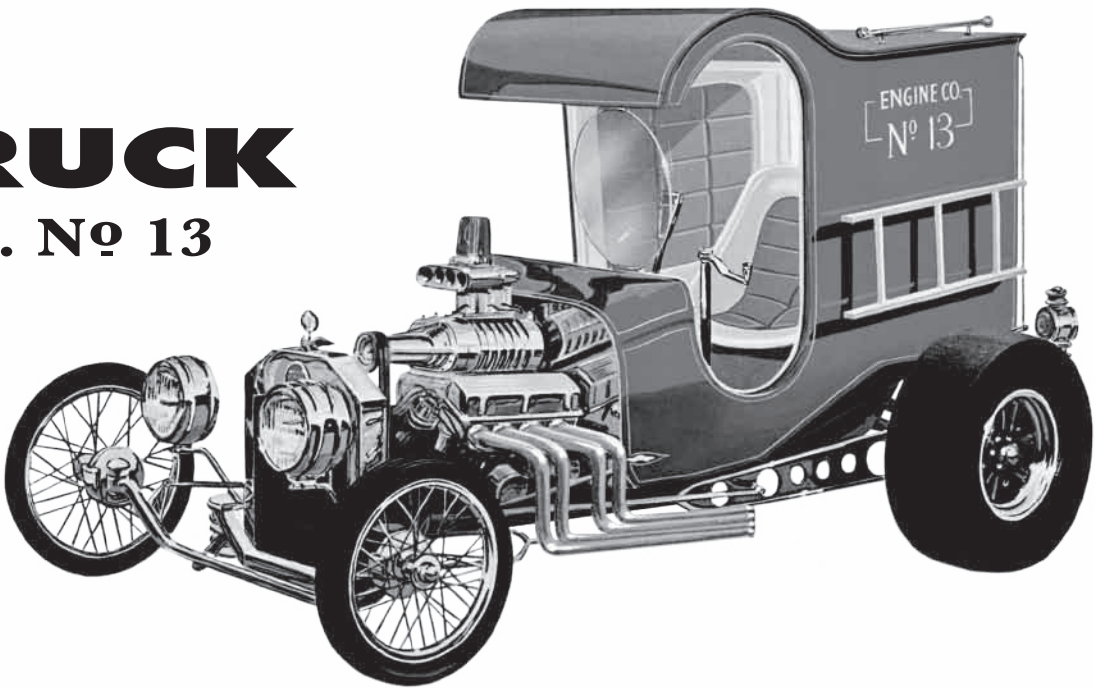


Chuck Miller's FIRE TRUCK ENGINE CO. No 13

IMPORTANT! READ THIS FIRST

The highest quality styrene plastic goes into the making of each MPC model. Only paint and cement made for styrene should be used. Before joining parts, trim off excess plastic or "flash." Scrape plating from chromed parts where they are to be joined with other parts. Be careful not to get cement on exposed areas. To join parts, use cement sparingly. Apply cement to very small parts with a toothpick.

When painting your model, it is best to cement all non-chromed accessories to the body and paint the whole unit at one time. You should have no trouble assembling your kit if the instructions are followed properly. The parts are numbered in order of assembly. Chrome parts are indicated (C).

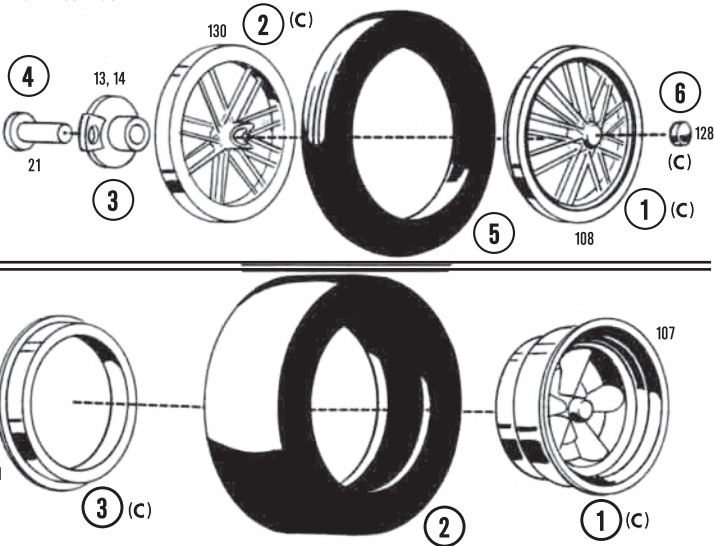


SUB-ASSEMBLIES

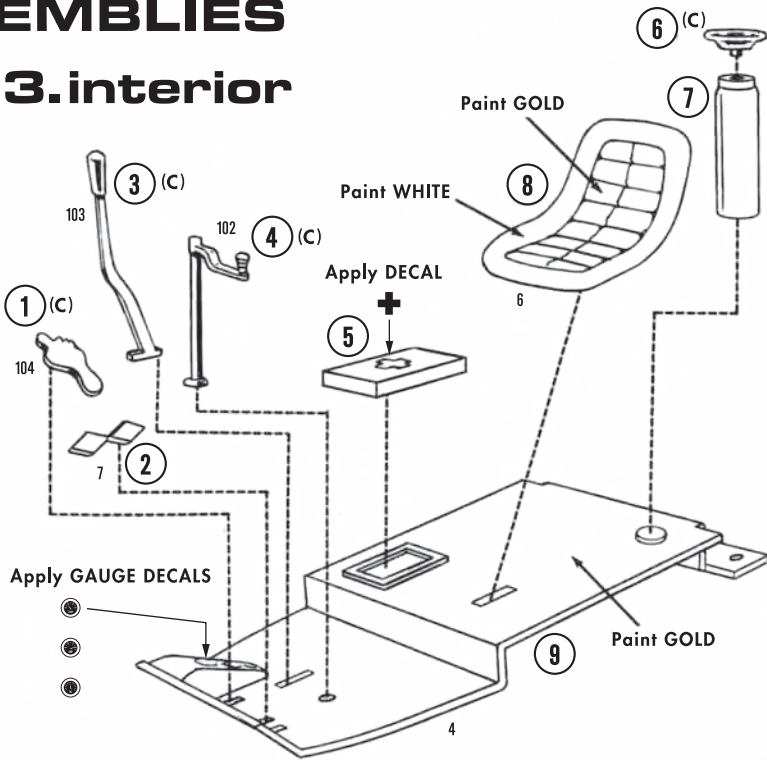
1. wheels

1 Step Number
128 Part Number

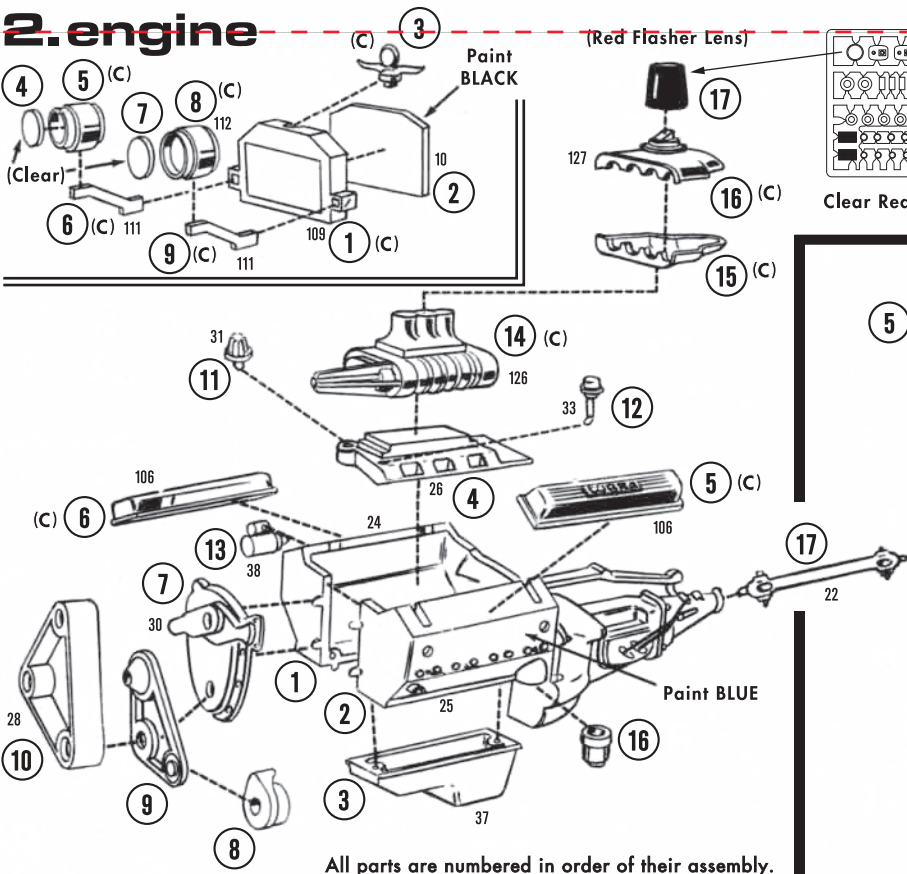
The wheels are numbered in order of their assembly. Assemble all four wheels and allow cement to dry.



3. interior



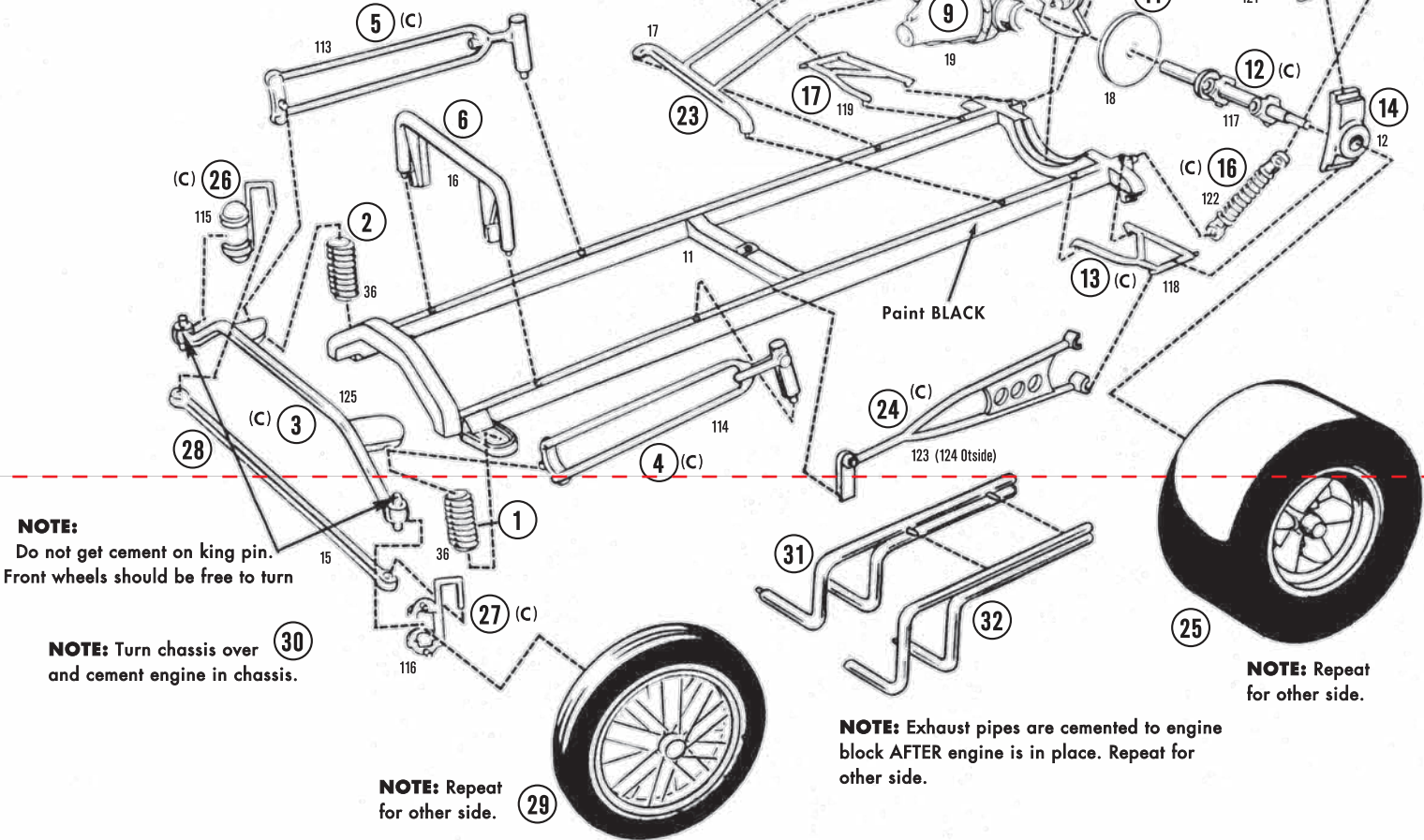
2. engine



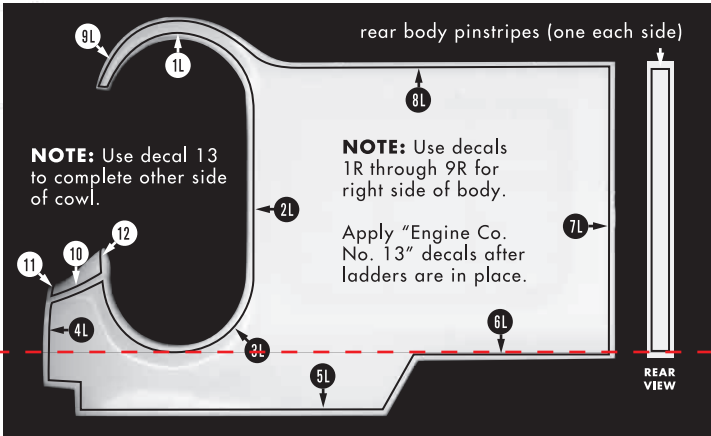
COMPLETION ASSEMBLIES

5.chassis

NOTE: Chassis is shown upside down for clarity.
All parts are numbered in order of their assembly.



6.final assembly



FOR ADVANCED MODELERS - PINSTRIPE DECALS

The pinstripe decals have been broken down into smaller, easier to apply sections. Use the above numbering system to locate the decals on the sheet and install them one at a time. Work carefully to avoid breaking the long pieces.

