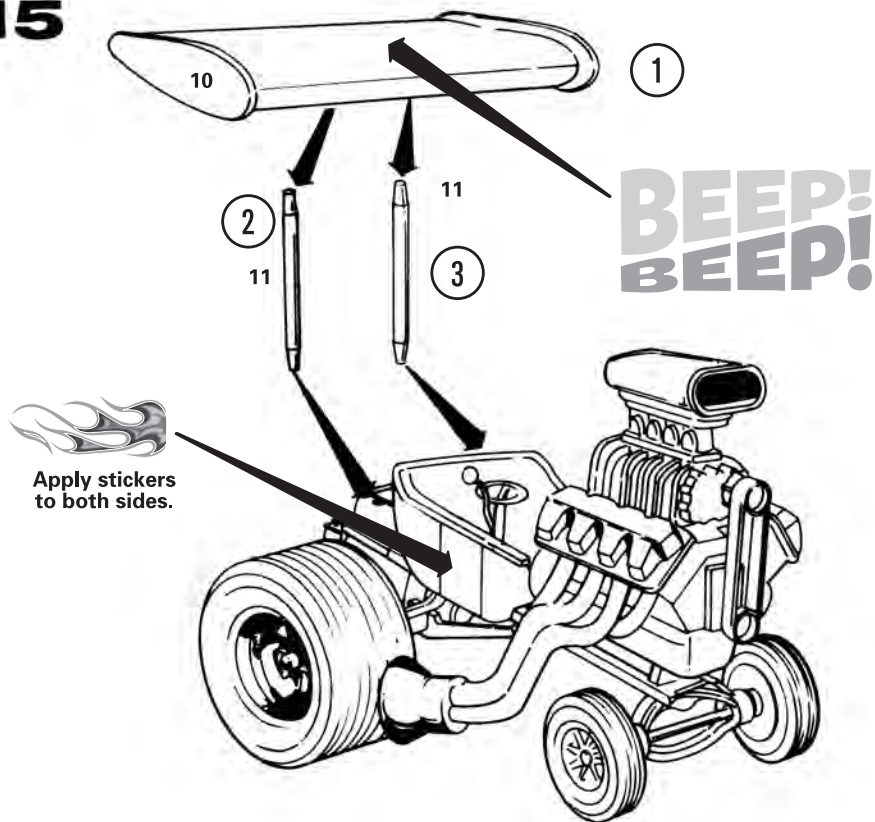


15



# Road Runner

and the Beep Beep™



M718-200

# Road Runner

and the Beep Beep™

**Snap it**

MODEL KIT



## READ THIS BEFORE YOU BEGIN BUILDING.

Look over the instructions. Remove small parts from "runners" very carefully. MPC kits are made of the highest quality styrene plastic. Use only paint made for styrene. Trim off excess plastic or "flash". Follow the instructions carefully. The parts are numbered in their assembly order. No glue is needed in the building of this kit. However if you desire to use glue, for strength, use only glue made for styrene plastic (such as NOTOX).

Chrome plated part **6**

Non plated part **15**

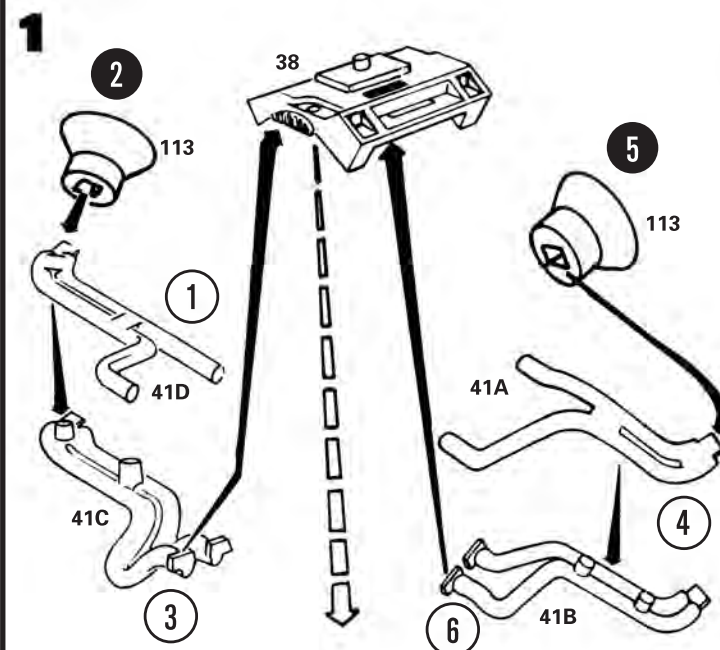
Part number 103



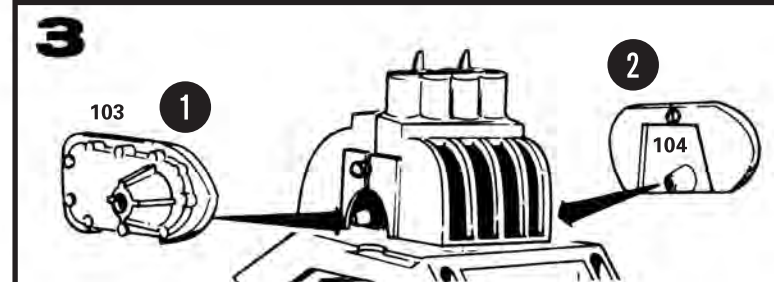
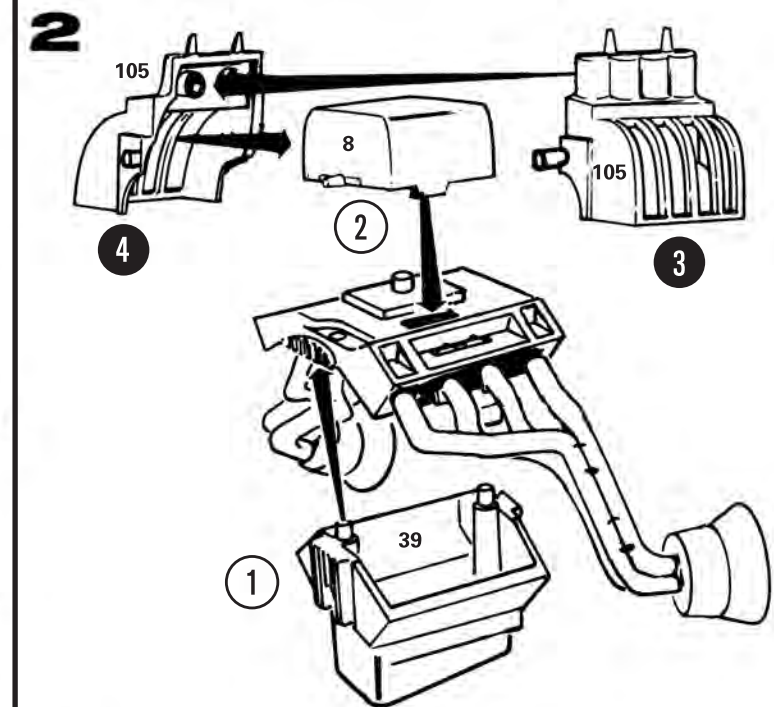
round2models.com

LOONEY TUNES and all related characters and elements are trademarks of and © Warner Bros. Entertainment Inc. WB SHIELD: TM & © Warner Bros. Entertainment Inc.

(s11)  
Ford Oval and nameplates are registered trademarks owned and licensed by Ford Motor Company. Manufactured by Round 2, LLC. www.ford.com MPC is a registered trademark of Learning Curve Brands, Inc. used under license to Round 2, LLC. ©2011 Learning Curve Brands, Inc. All rights reserved. ©2011 Round 2, LLC, South Bend, IN 46628 USA. Product and packaging designed in the USA. Made in China. All rights reserved.

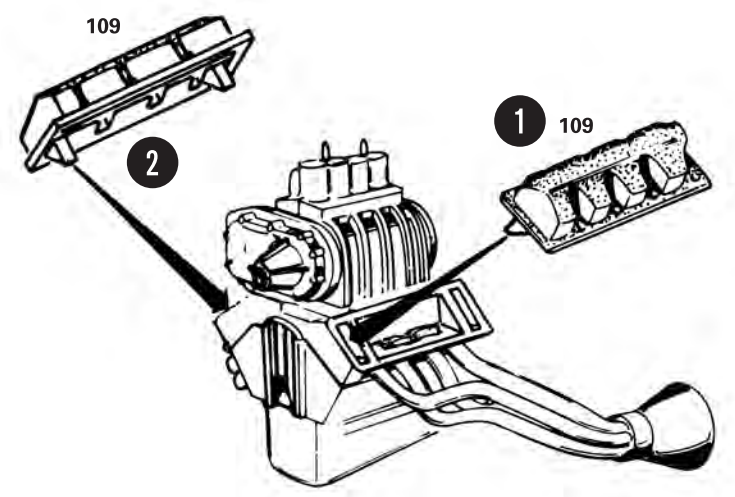


COMPLETED ASSEMBLY

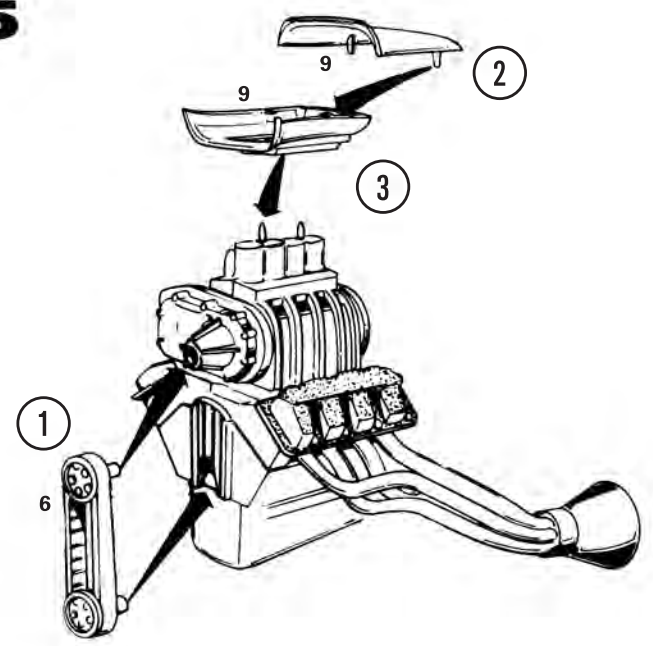




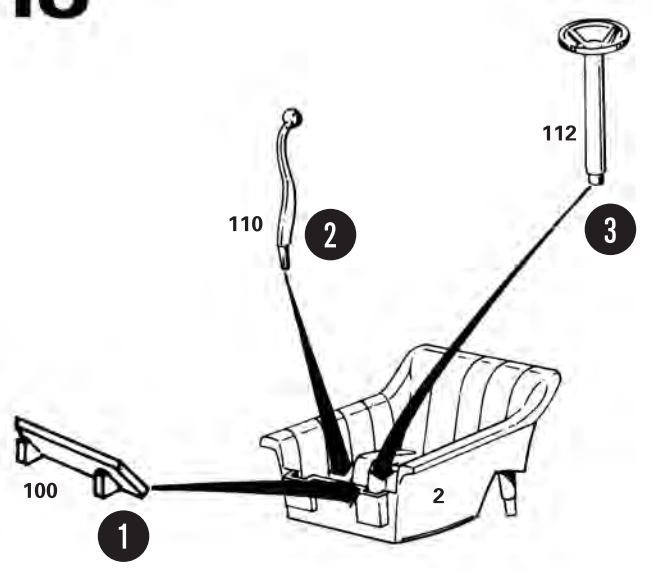
4



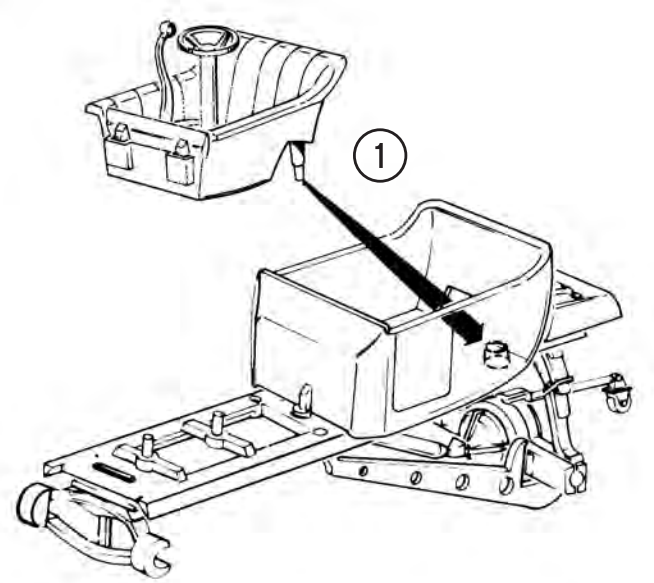
5



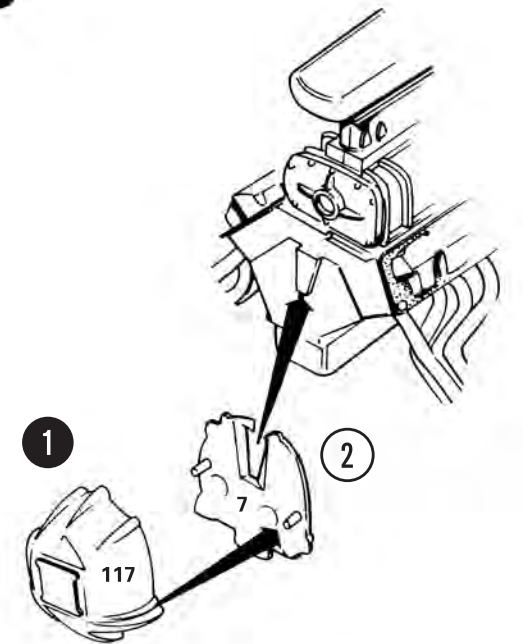
10



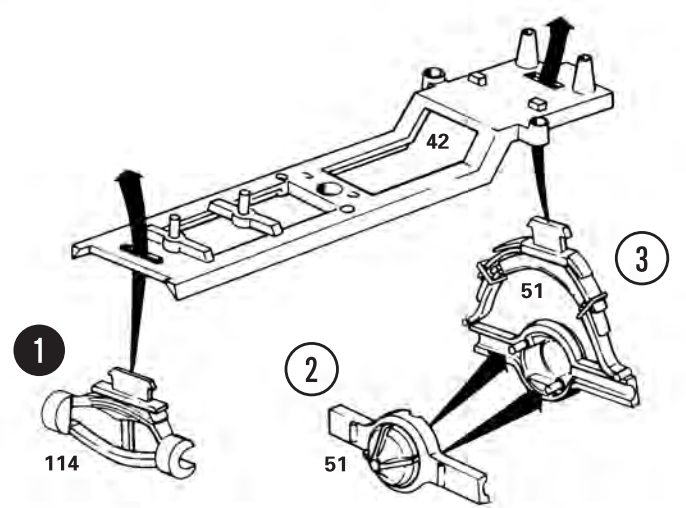
11



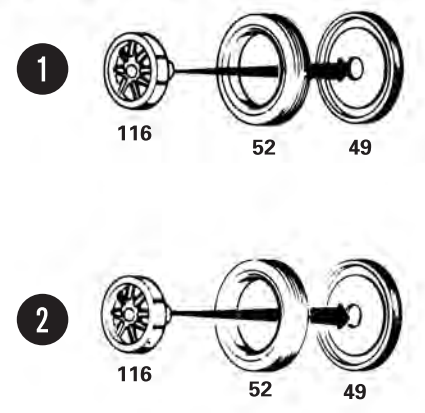
6



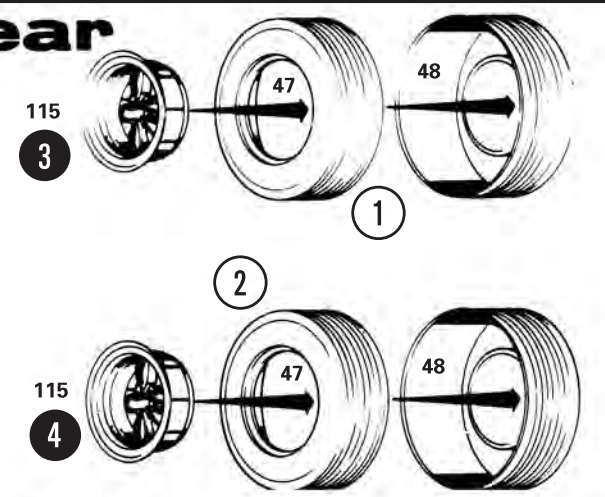
7



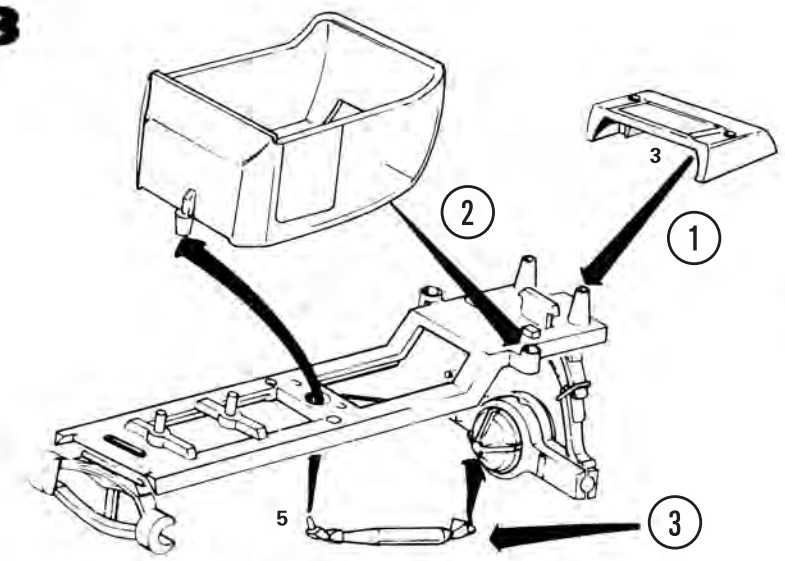
12 Front



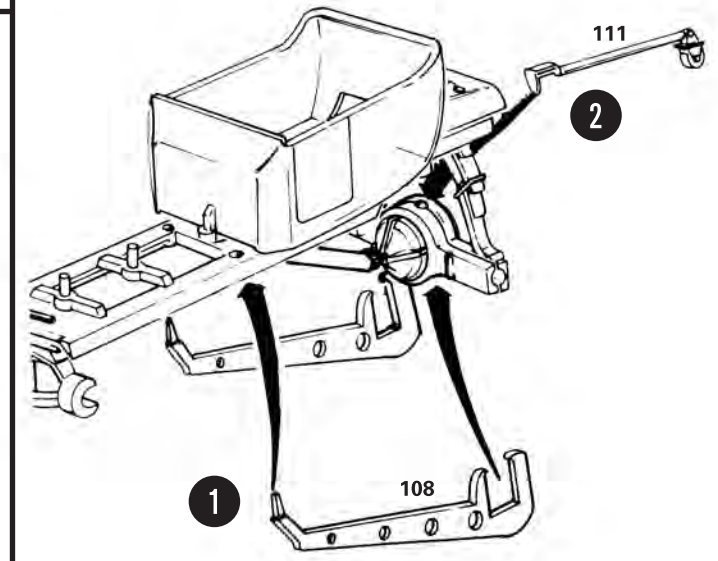
Rear



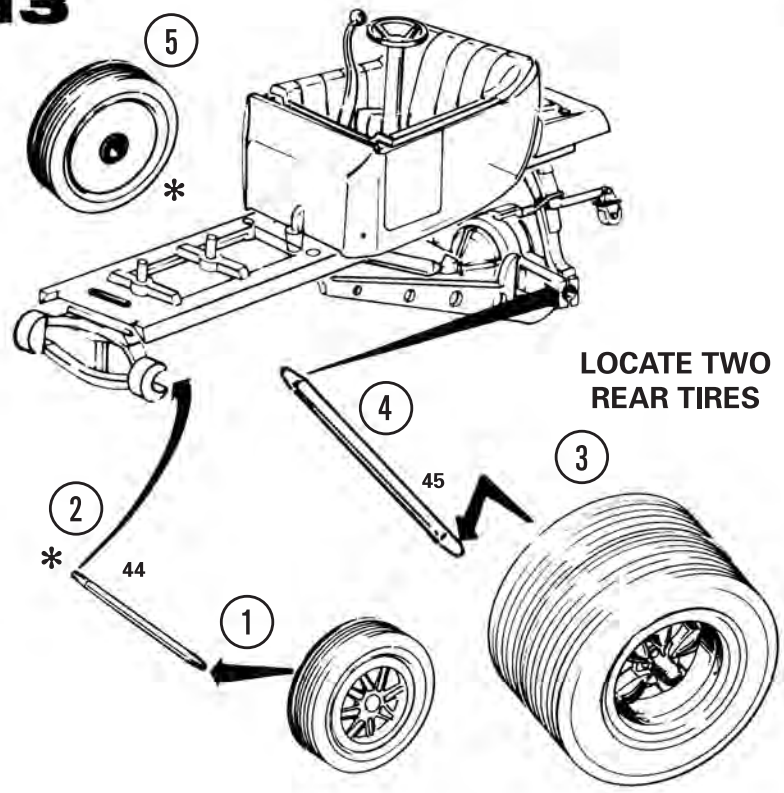
8



9



13



14

