



M733-200



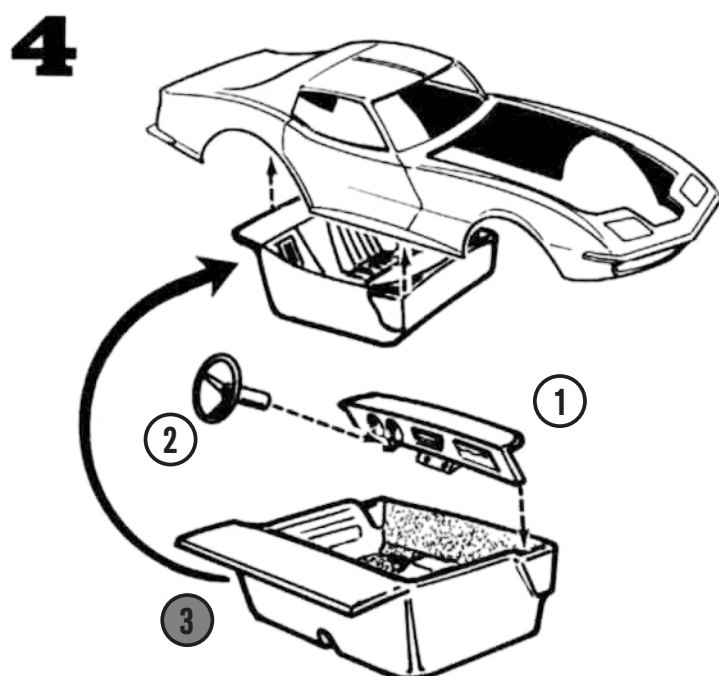
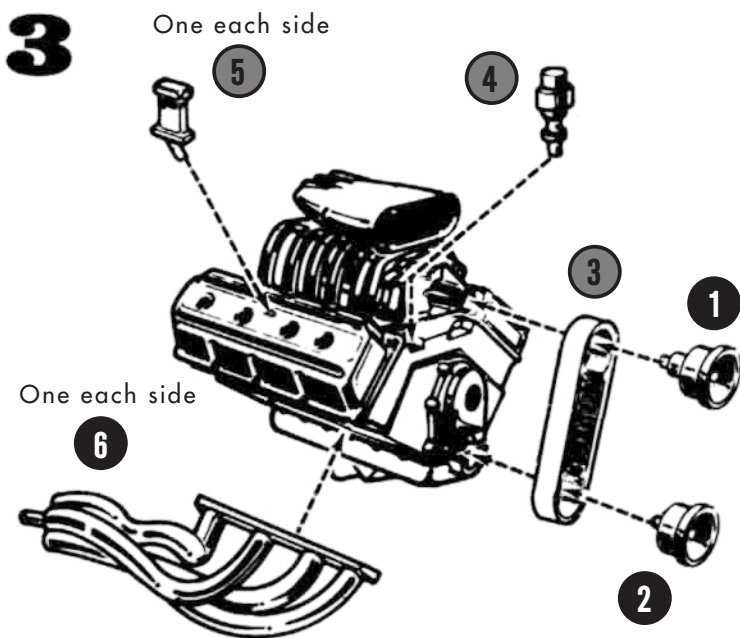
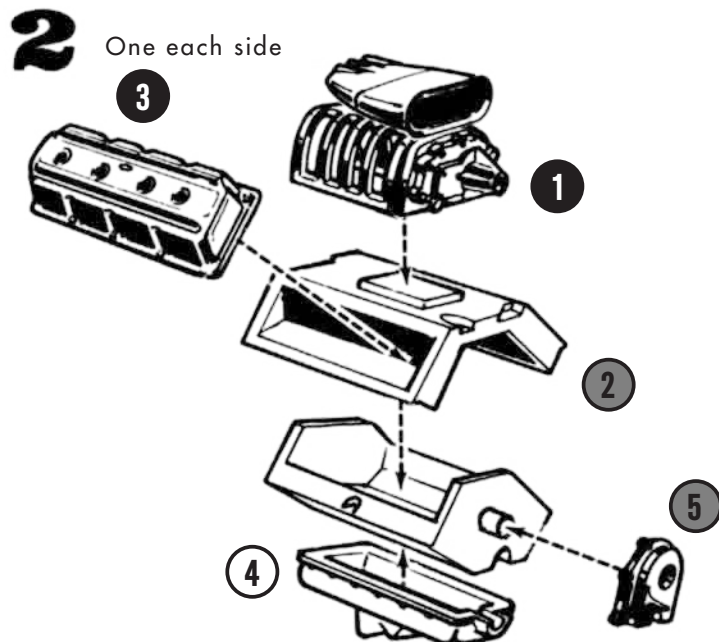
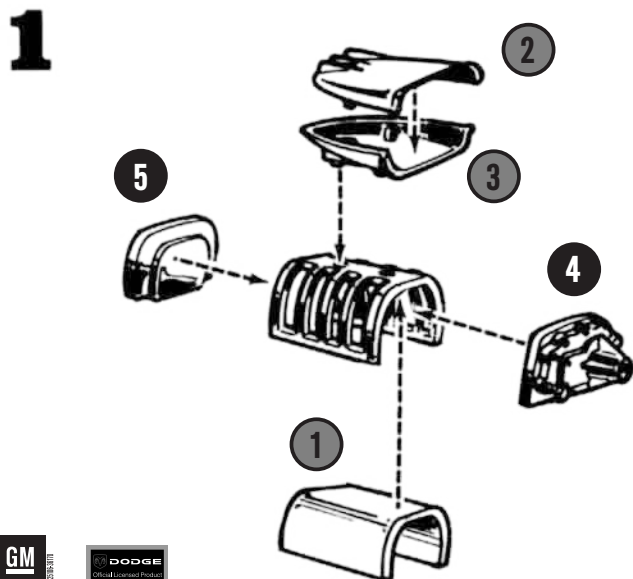
Before you begin building, look over the instructions carefully and test fit parts without cementing. Remove small parts from 'runners' with a modeler's knife, do not twist them off.

MPC kits are made of the highest quality styrene plastic.

Use only paint and cement made for styrene. Be sure that cement is used sparingly.

Trim off excess plastic or 'flash' and scrape plating from chromed parts before joining.

Follow the instructions carefully. The parts are numbered in their assembly order.



GM Official Licensed Product

DODGE Official Licensed Product

GENERAL MOTORS Trademarks used under license to Round 2, LLC. Dodge and HEMI are trademarks of Chrysler Group LLC. Dodge Vans and their trade dress are used under license by Round 2, LLC. © Chrysler Group LLC 2010. Goodyear (and wing foot design) is a trademark of The Goodyear Tire & Rubber Company, Akron, Ohio USA used under license by Round 2, LLC. MPC and ZINGERS are registered trademarks of Learning Curve Brands, Inc. used under license to Round 2, LLC. ©2010 Learning Curve Brands, Inc. All rights reserved. Other names and trademarks used under license to Round 2, LLC or by permission. ©2010 Round 2, LLC, South Bend, IN 46620 USA. Product and packaging designed in the USA. Made in China. All rights reserved.

5



NOTE: Repeat for other side.

NOTE: Right wheel shown installed.

4 Remove before assembly.



One each side

Now, after a 30 year absence, MPC's ZINGERS are back! They are icons of model car history and are just as much fun to build and collect today!



THE SUPER VETTE ZINGER BUILT BY CHUCK MILLER