



The YOUNG AMERICAN

Carl Caspers

AA/FUEL DRAGSTER

IMPORTANT!

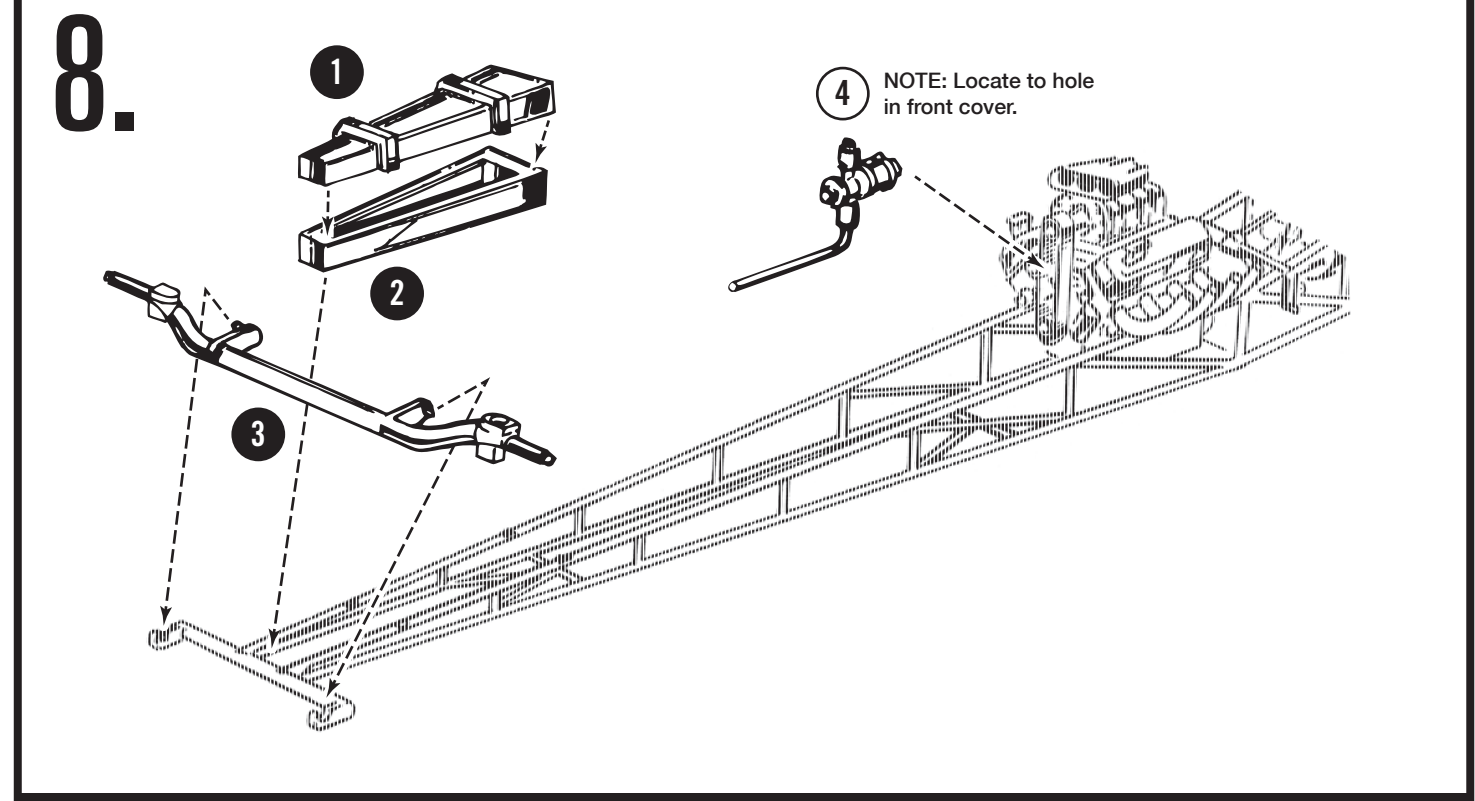
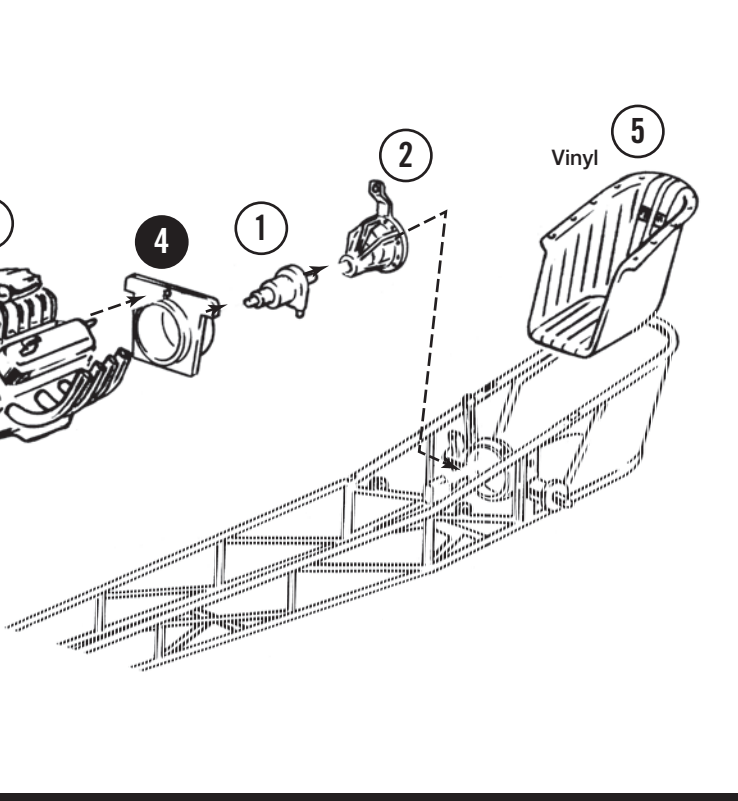
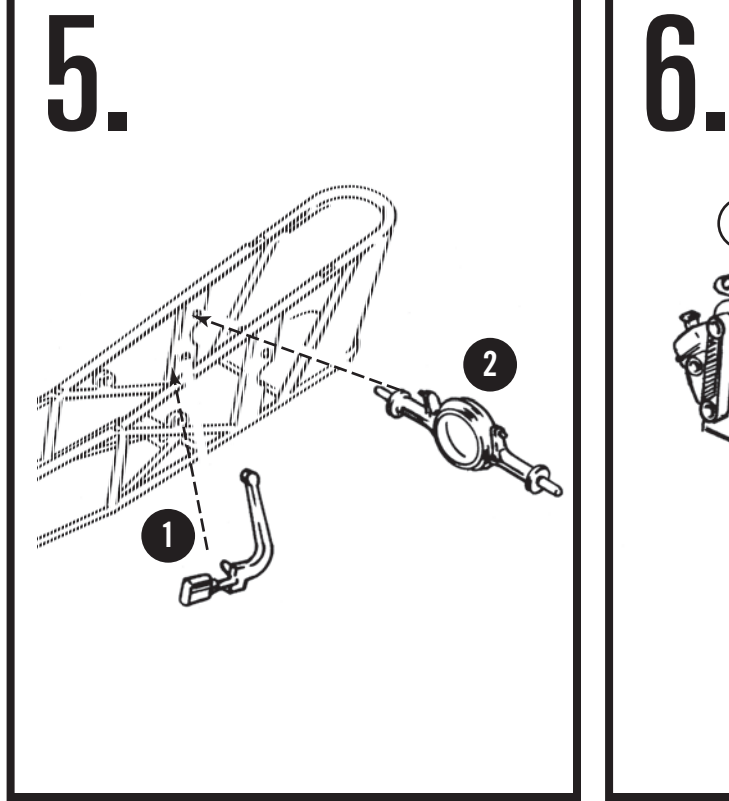
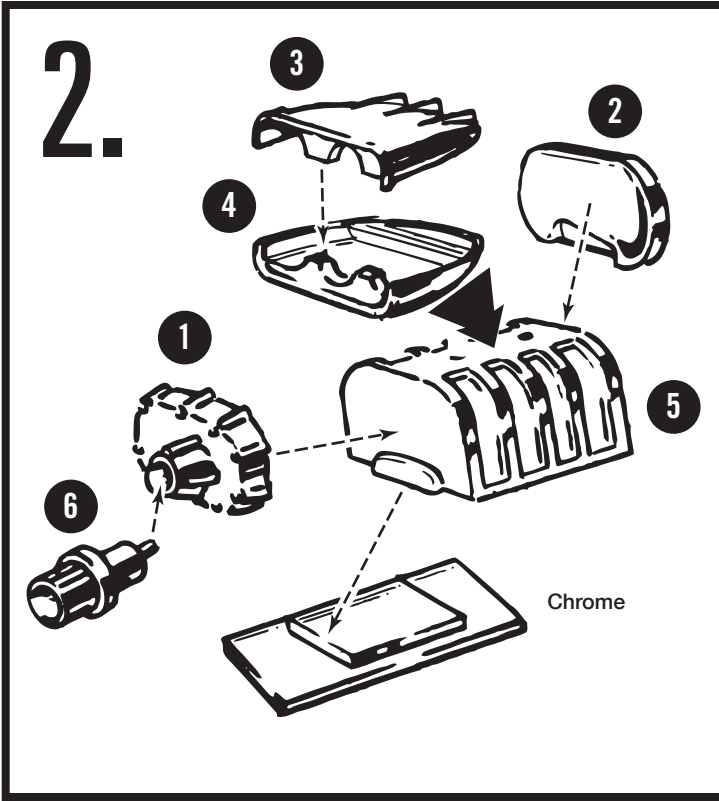
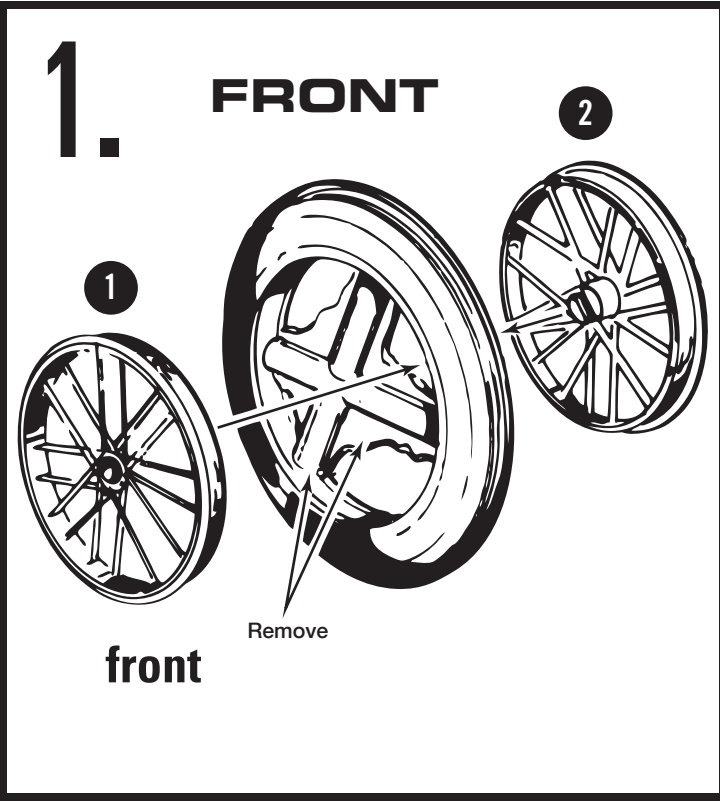
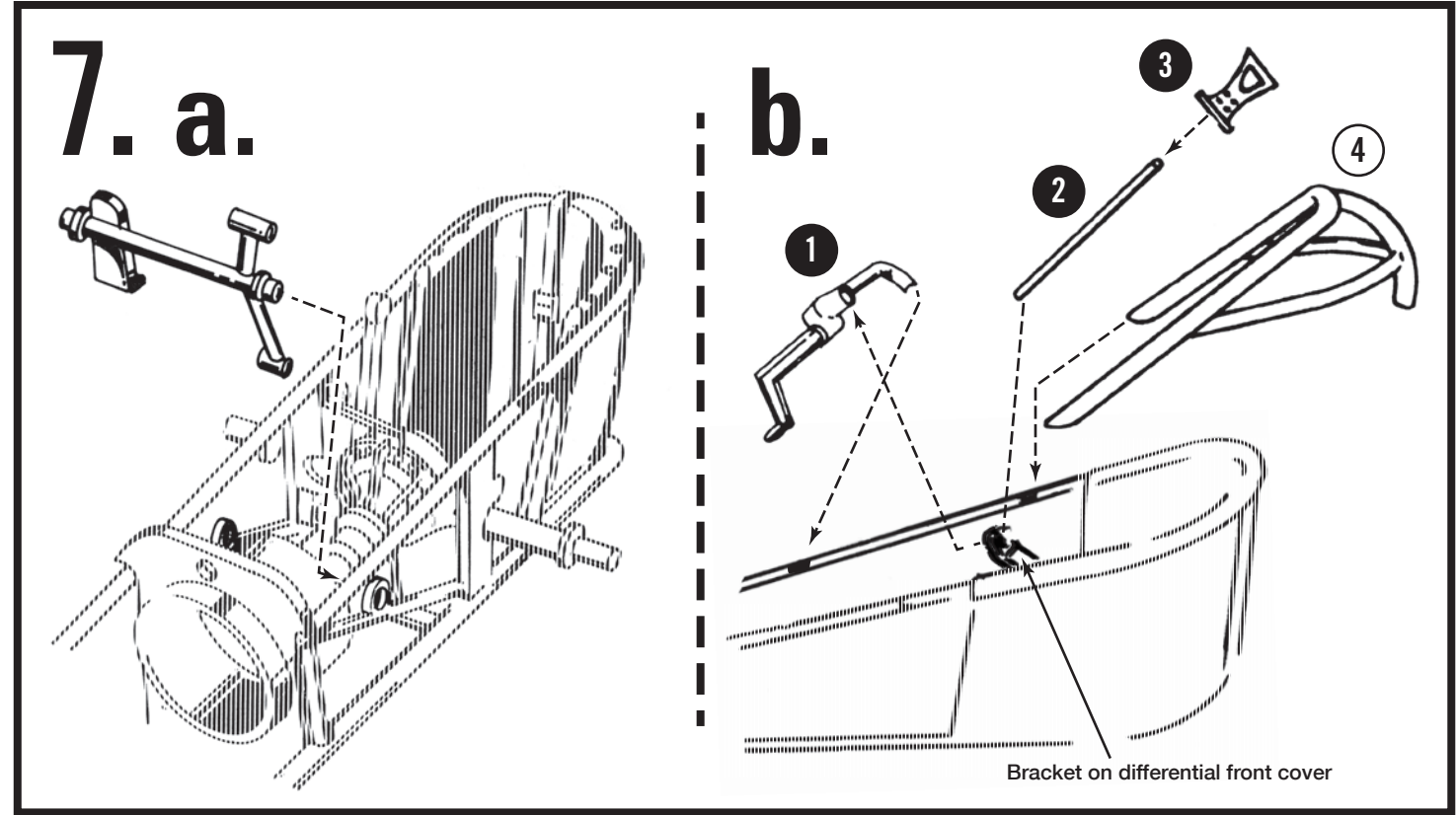
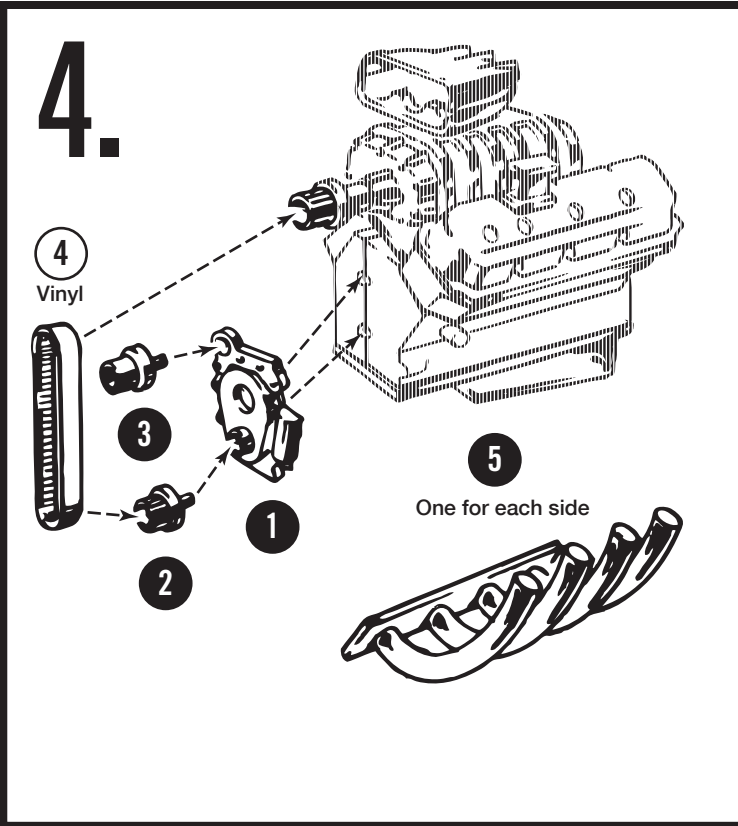
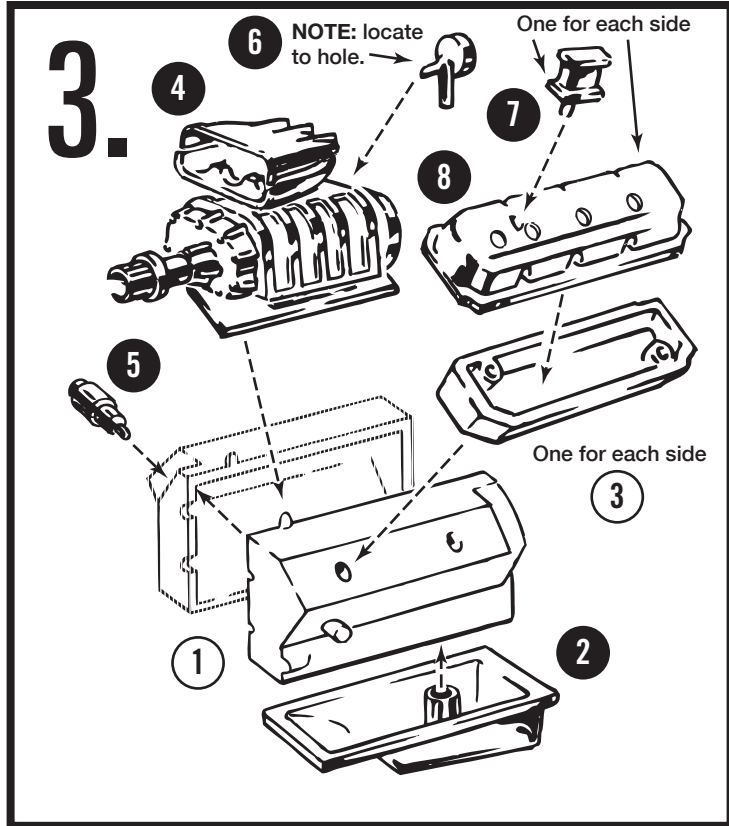
Before you begin building, look over the instructions carefully. Following the procedure given, test fit parts together without cementing. This way you will be more familiar with the location of parts when it becomes time to use cement.

For removing small parts from the "runners" it is best to use a modeler's knife. Do not attempt to "twist" them off.

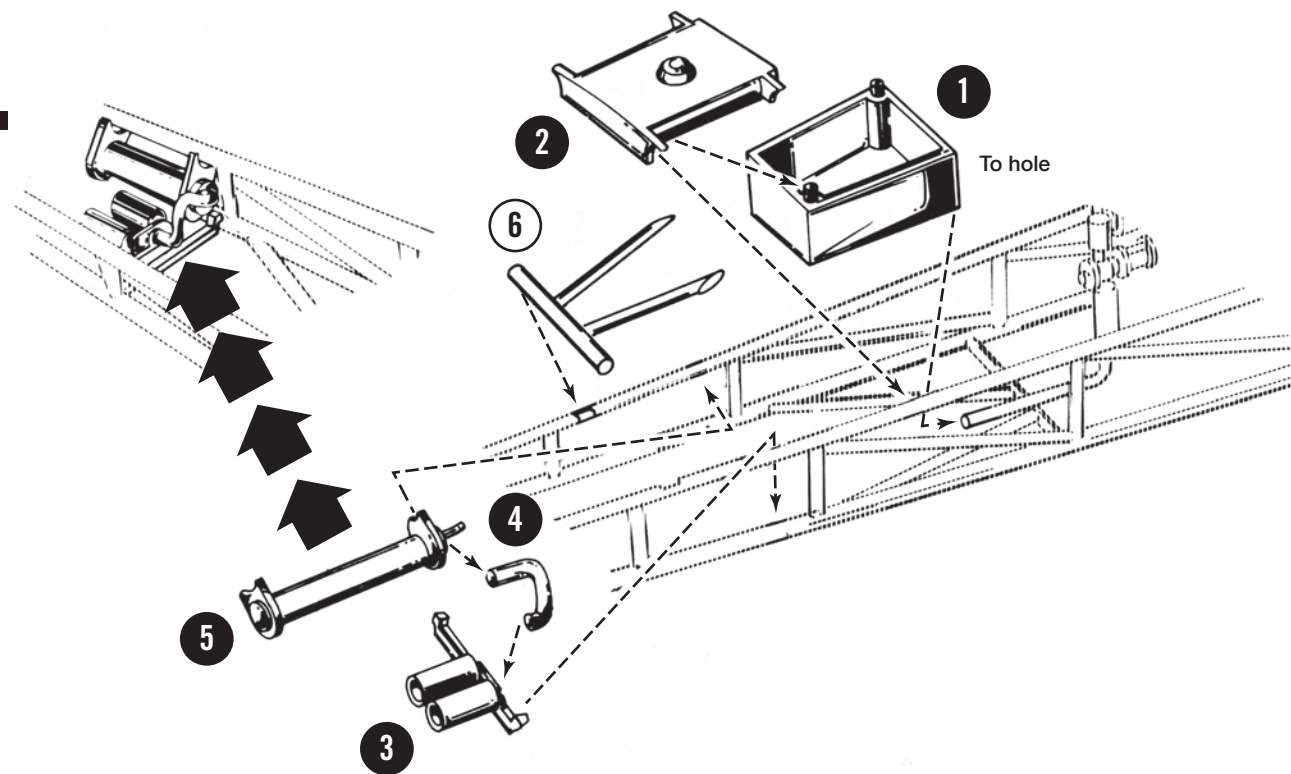
The highest quality styrene plastic goes into the making of each MPC model. Only paint and cement for styrene should be used. Before joining parts, trim off excess plastic or "flash." Scrape plating from chromed parts where they are to be joined with other parts. Be careful not to get cement on exposed areas. To join parts use cement sparingly. Apply cement to small parts with a toothpick.

You should have no trouble assembling your kit if the instructions are followed properly. The parts are numbered in order of assembly.

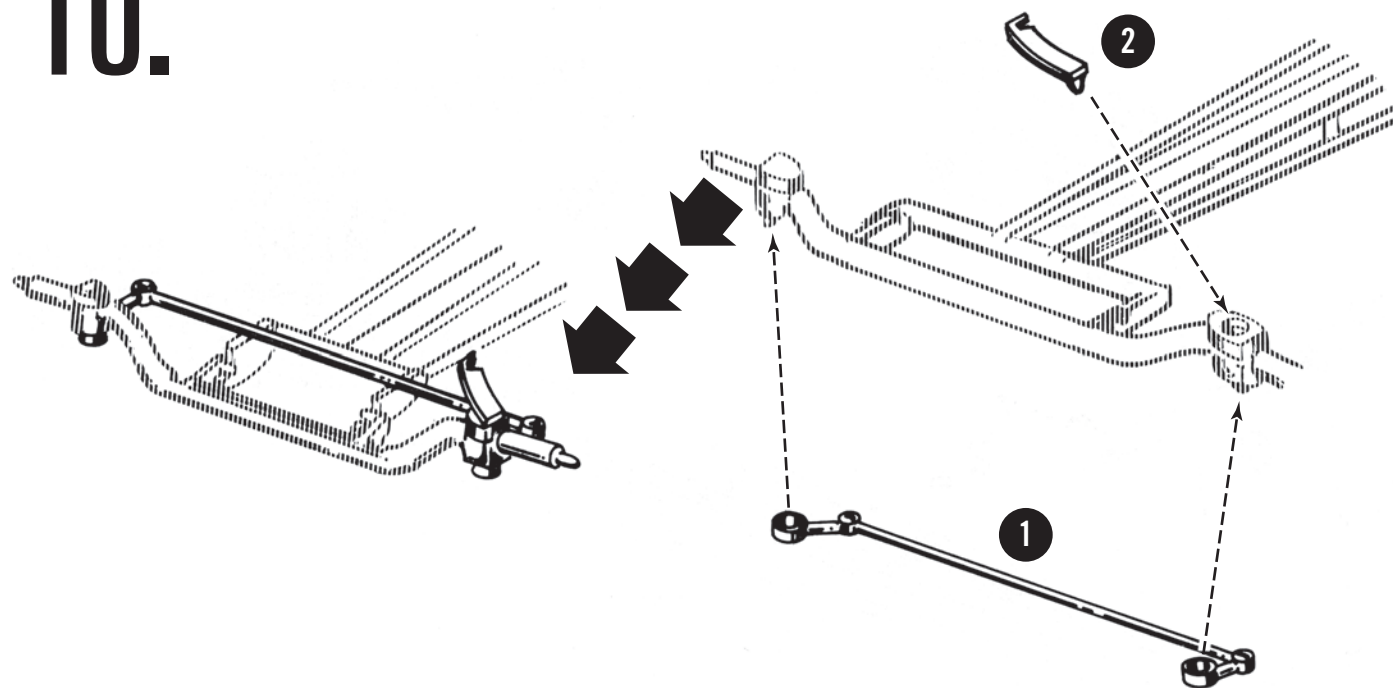
2 — PLATED 2 — NON-PLATED



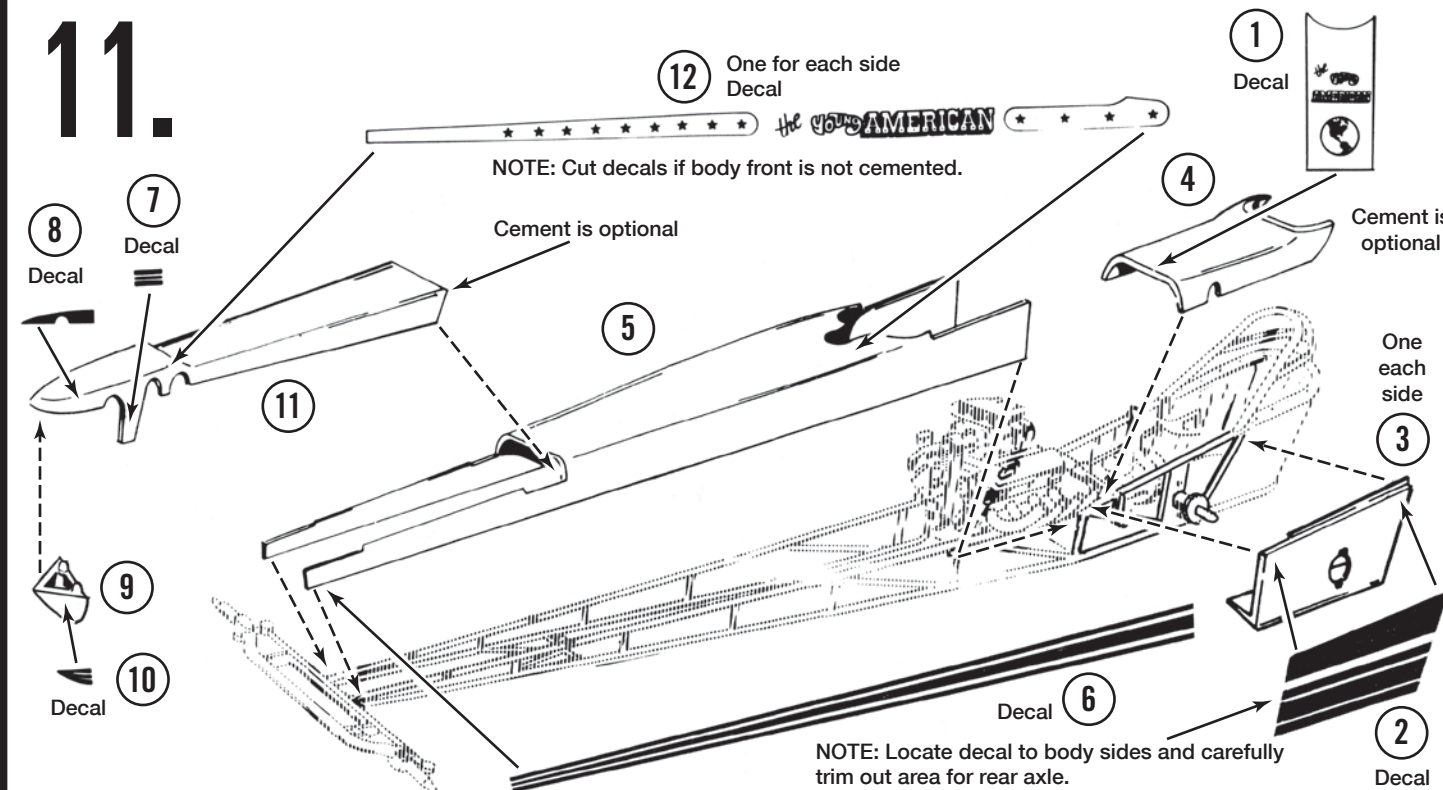
9.



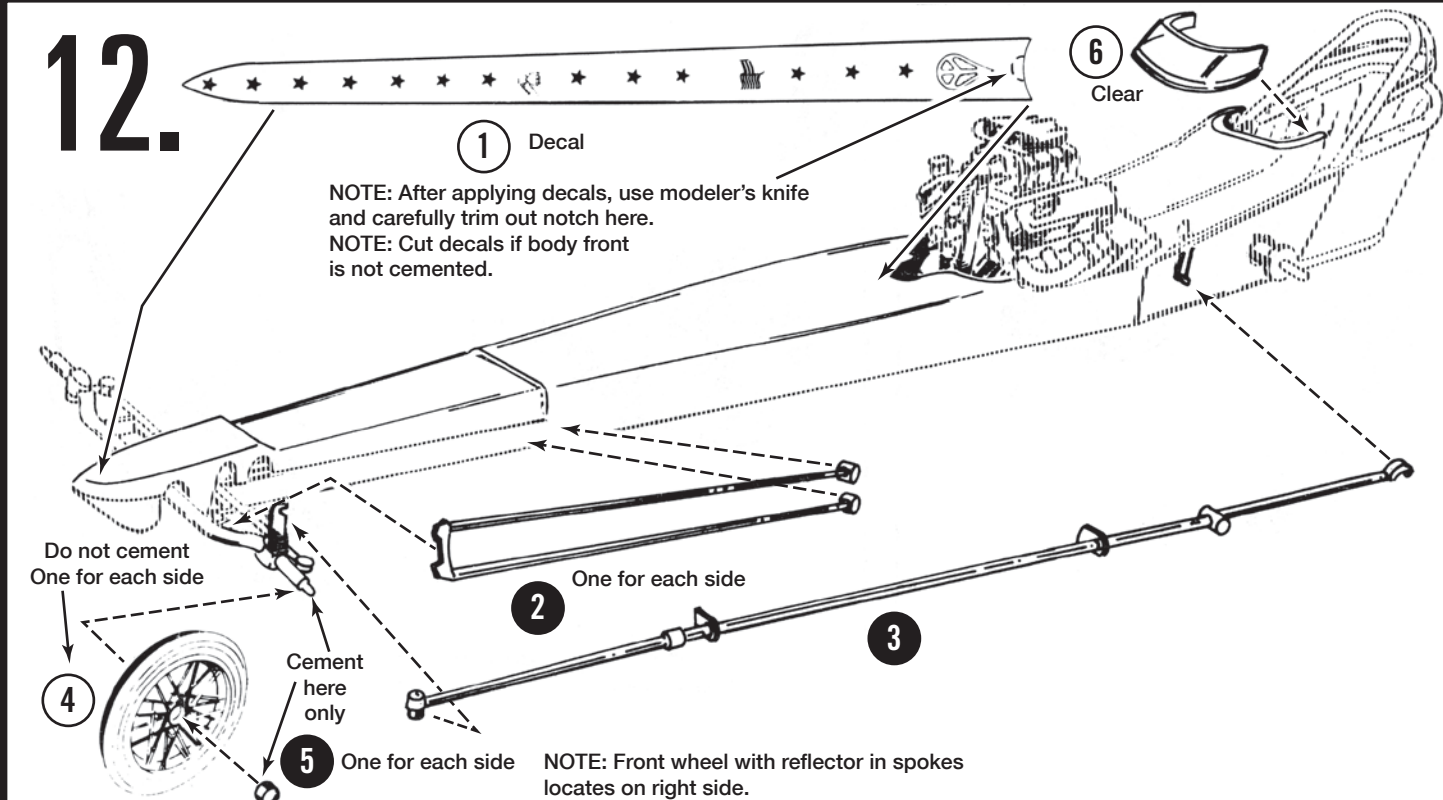
10.



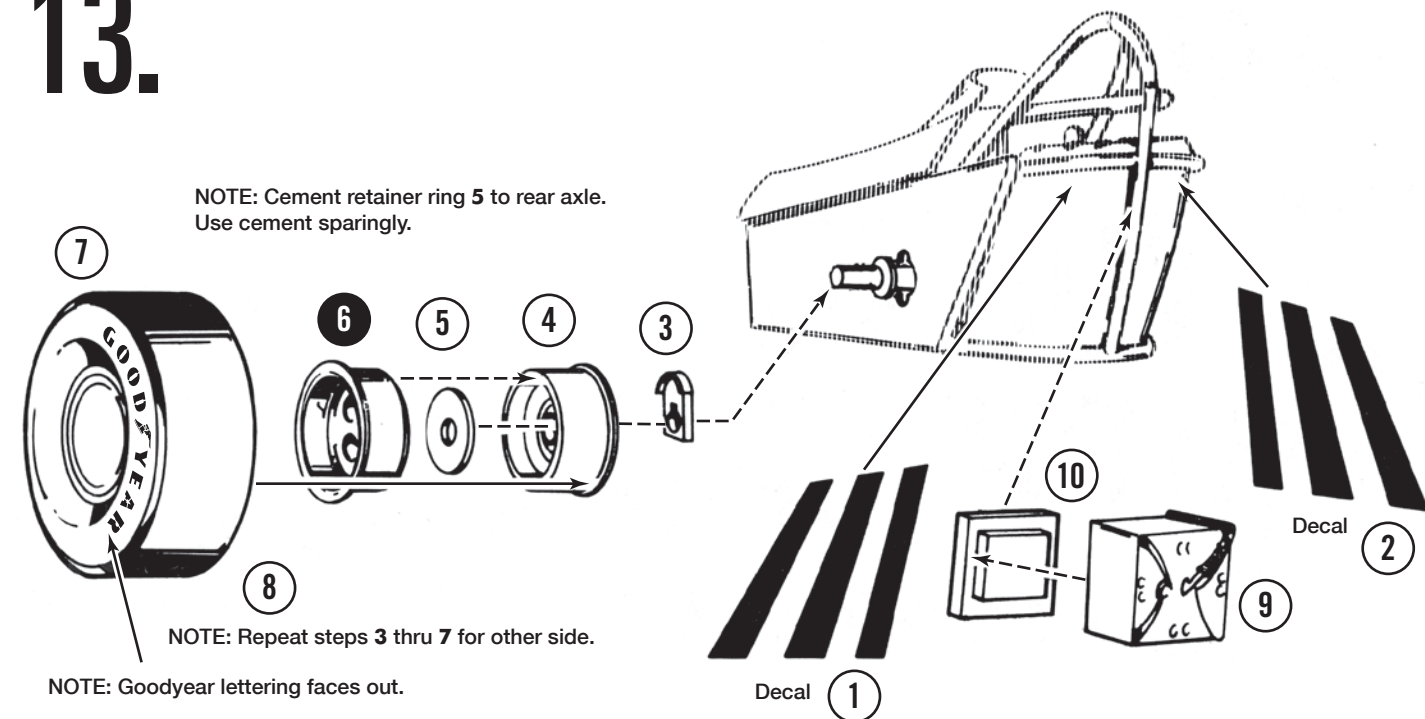
11.



12.



13.



Custom and Dragster Builders! Look for...

CUSTOM & COMPETITION | M&H RACEMASTER DRAGSTER SLICKS
STYLE NO. 2 • SUPER "TALL & WIDE" 11.75-16



Be sure to pick up our special 1/25 tire parts pack featuring 8 super-size pad-printed drag slicks with M&H lettering!

See ALL the Great MPC and AMT Products at ROUND2MODELS.COM

