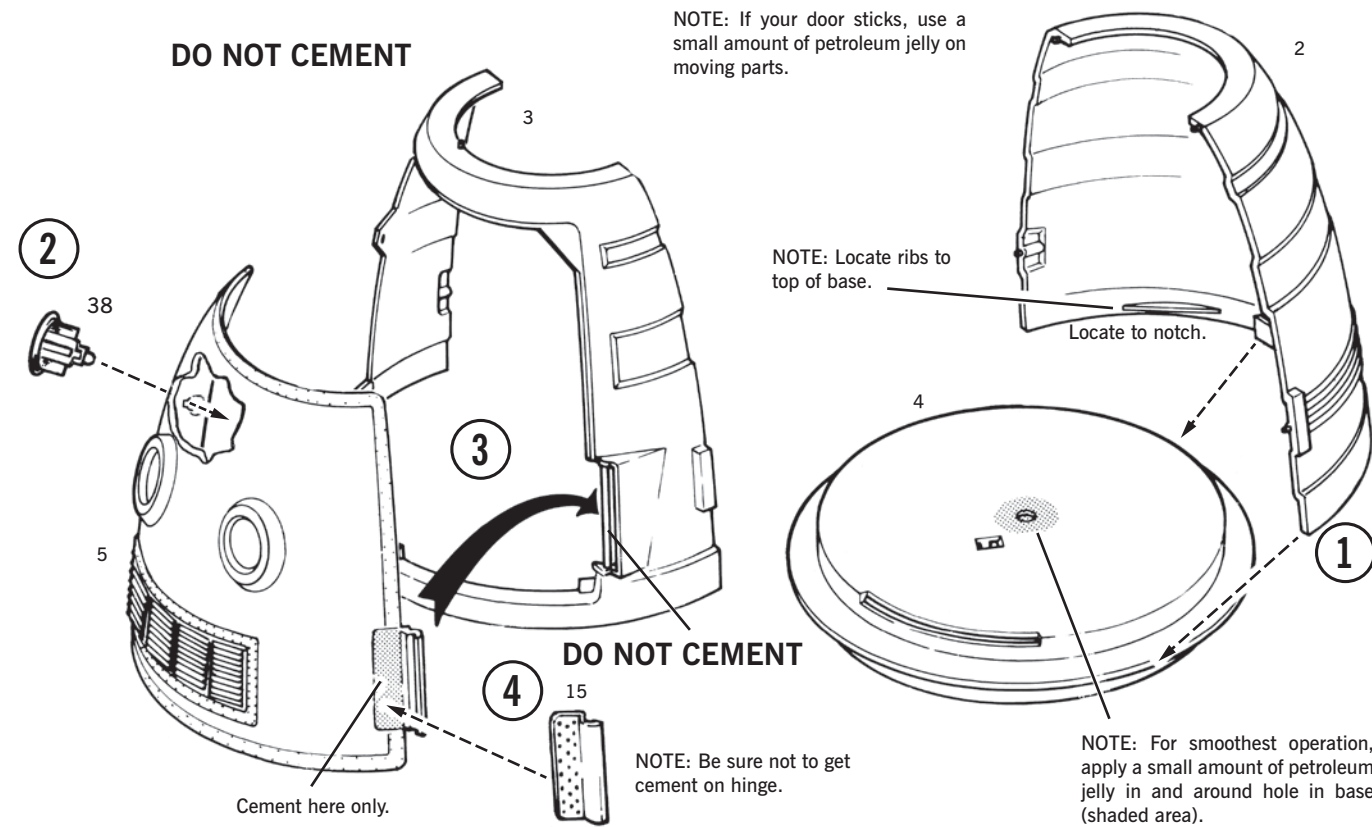


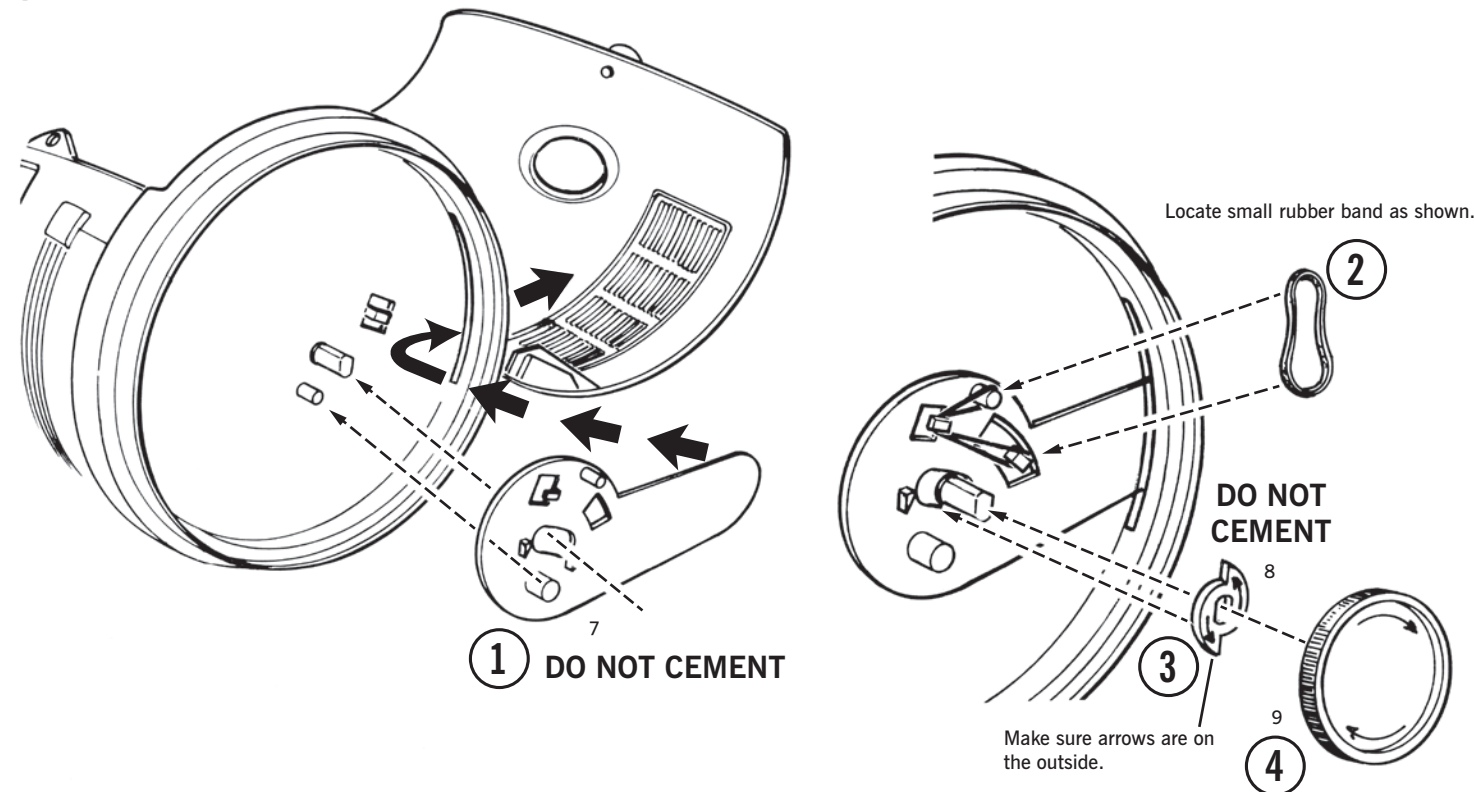
6

DO NOT CEMENT

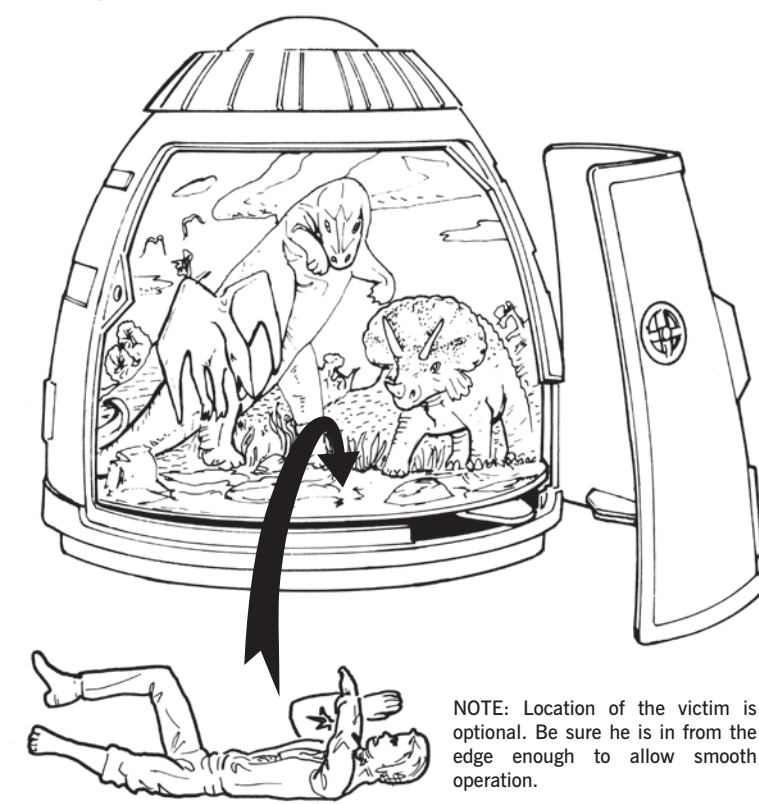
NOTE: If your door sticks, use a small amount of petroleum jelly on moving parts.



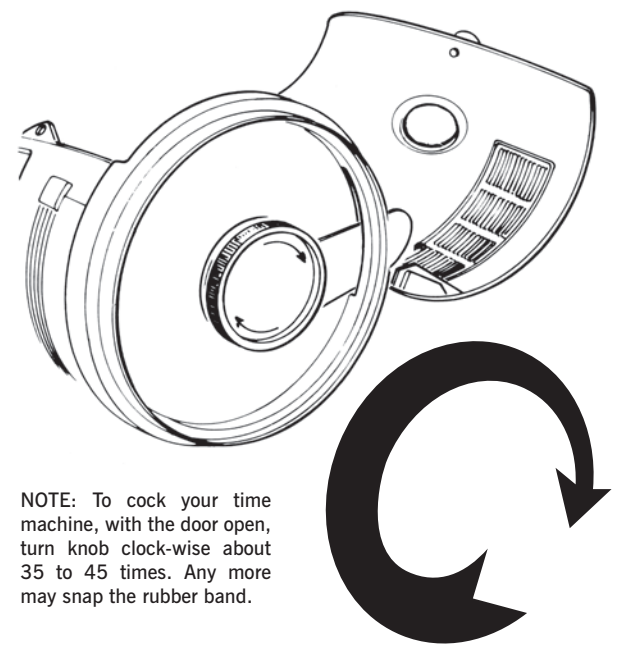
8



10

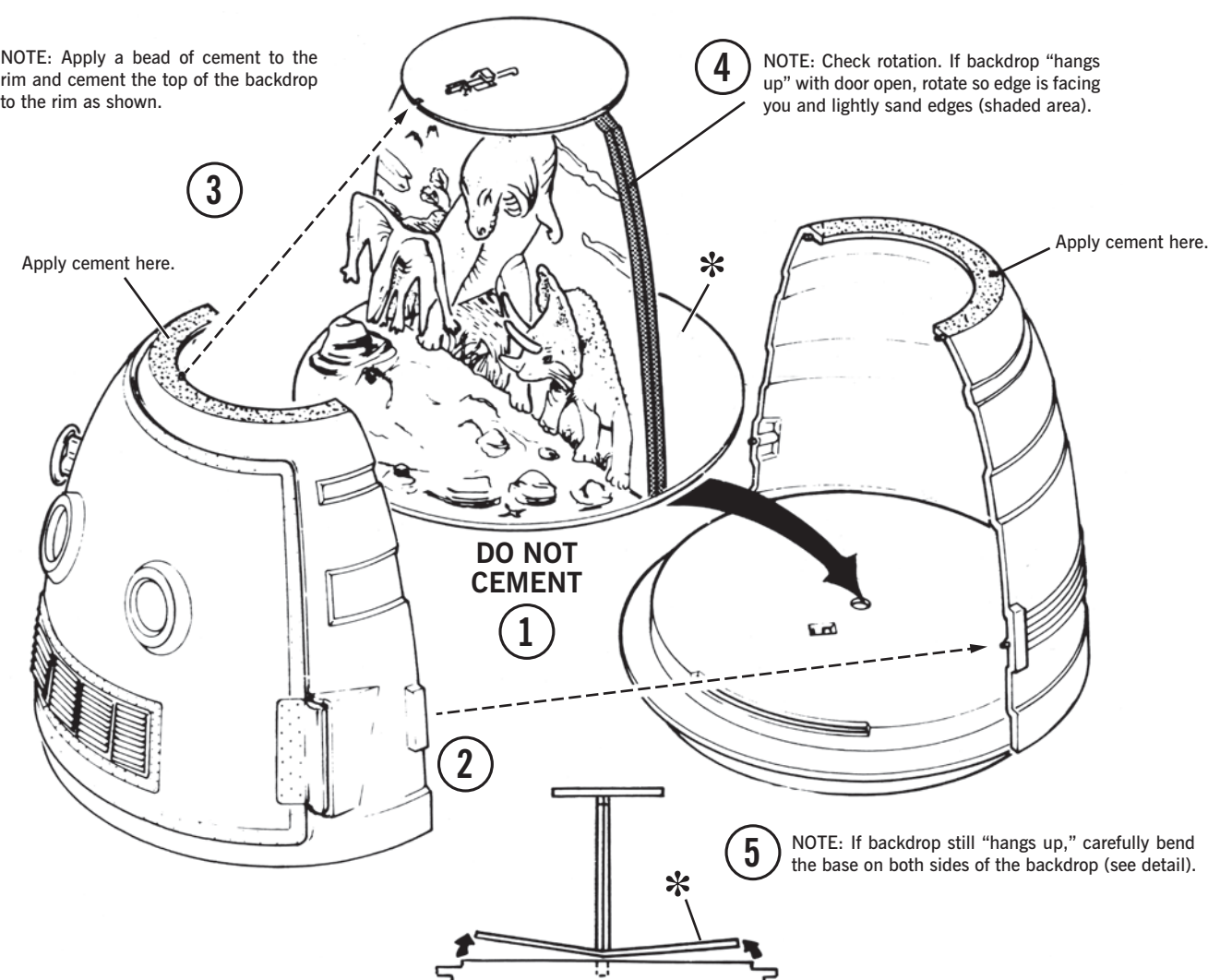


11



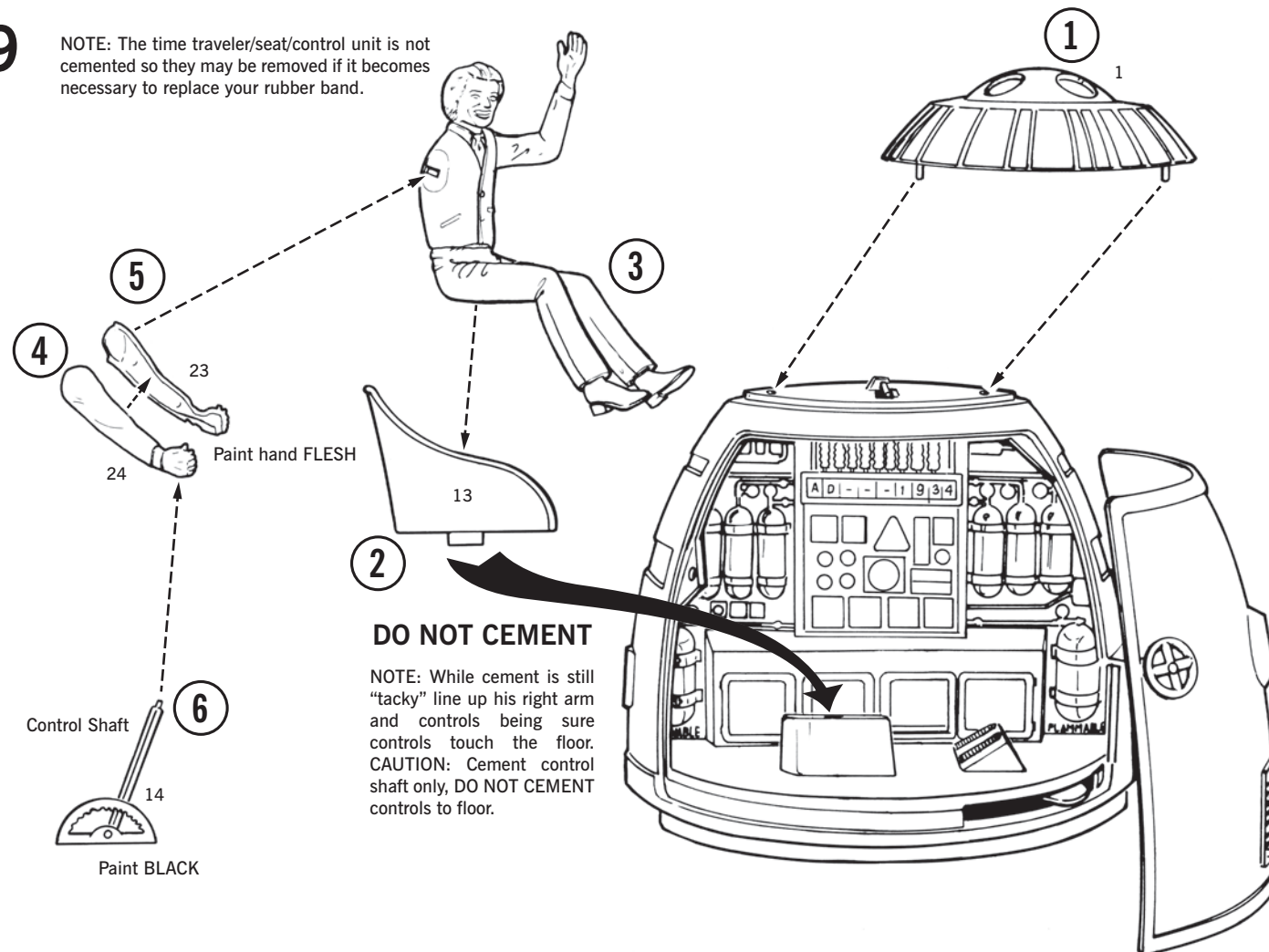
7

NOTE: Apply a bead of cement to the rim and cement the top of the backdrop to the rim as shown.



9

NOTE: The time traveler/seat/control unit is not cemented so they may be removed if it becomes necessary to replace your rubber band.



12

HOW TO OPERATE YOUR TIME MACHINE

SPECIAL NOTE: BE SURE TIME MACHINE IS ON A FLAT AND LEVEL SURFACE FOR PROPER OPERATION.

