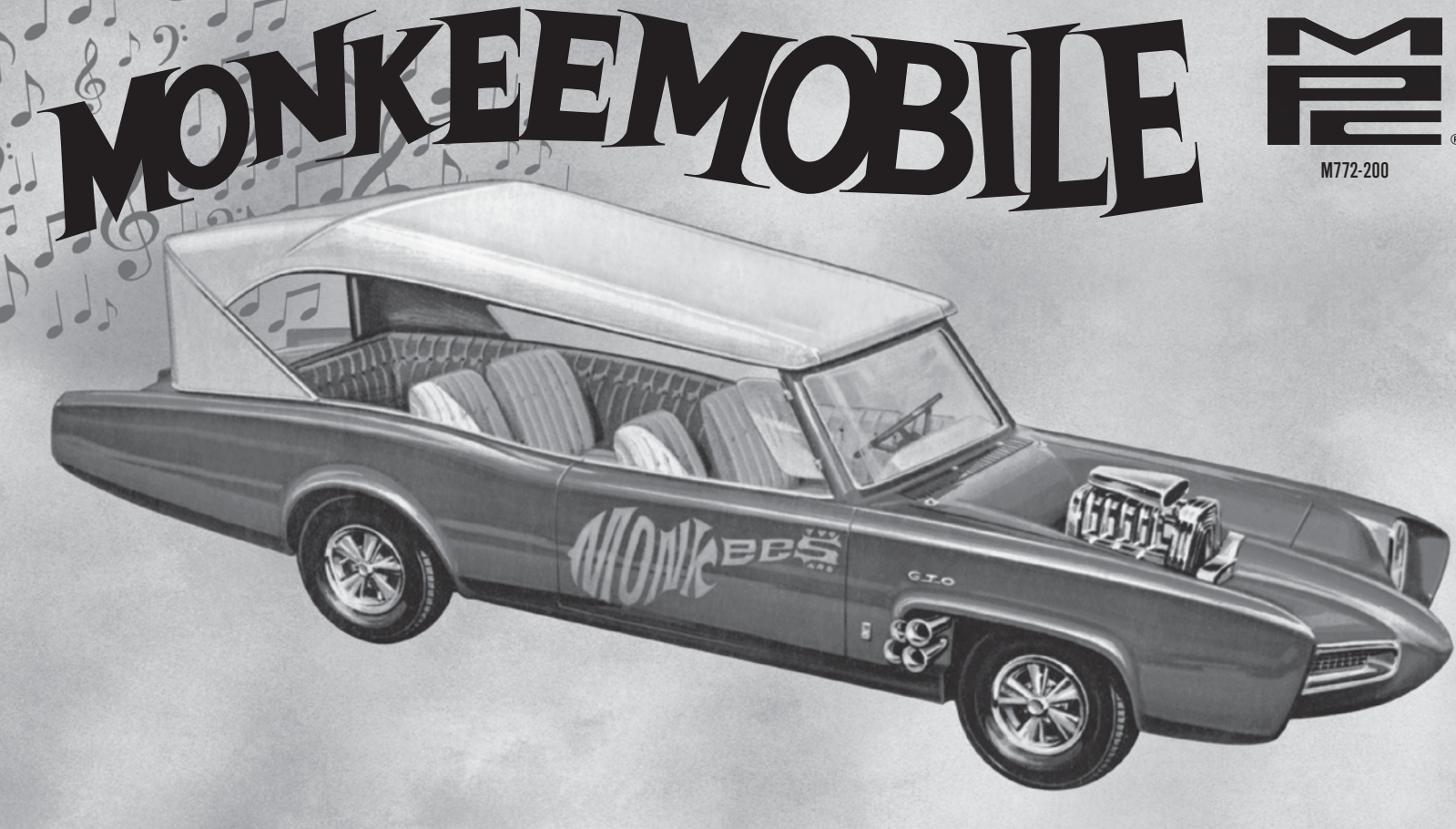
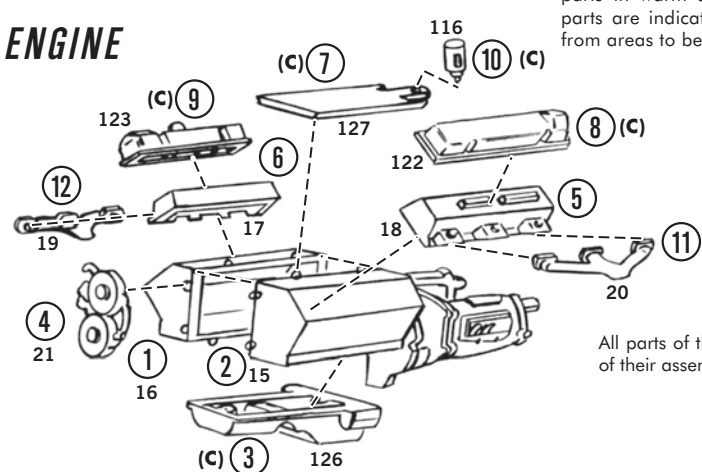


COLORS FOR MONKEEMOBILE
Tan – Top and Interior
Red – Body
Black – Chassis and Engine



SUB-ASSEMBLIES

ENGINE



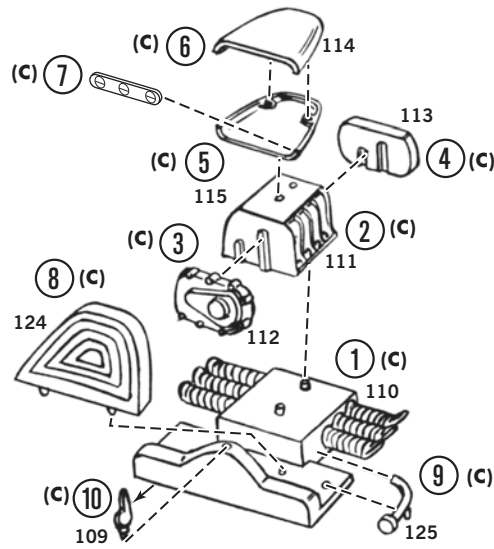
All parts are numbered in order of their assembly. Plan your car carefully before beginning assembly. It is best to paint your model before assembly. Use only paint and cement recommended for styrene plastic. Wash parts in warm soapy water before painting. Chrome parts are indicated by (C). Scrape plating and paint from areas to be cemented.

Note: Use a toothpick for applying cement to tiny parts.

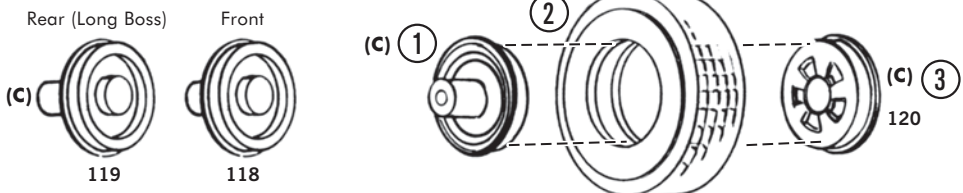
Plastic Cement

RADIATOR-BLOWER ASSEMBLY

All parts numbered in order of their assembly.

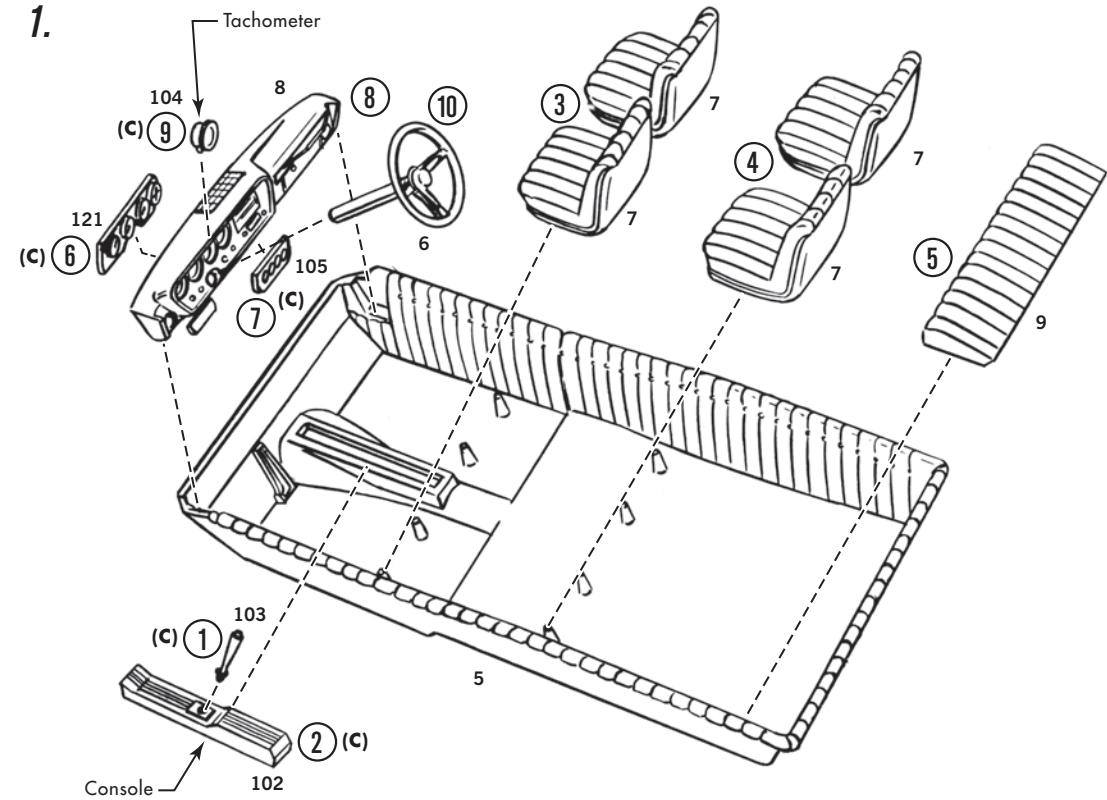


WHEELS



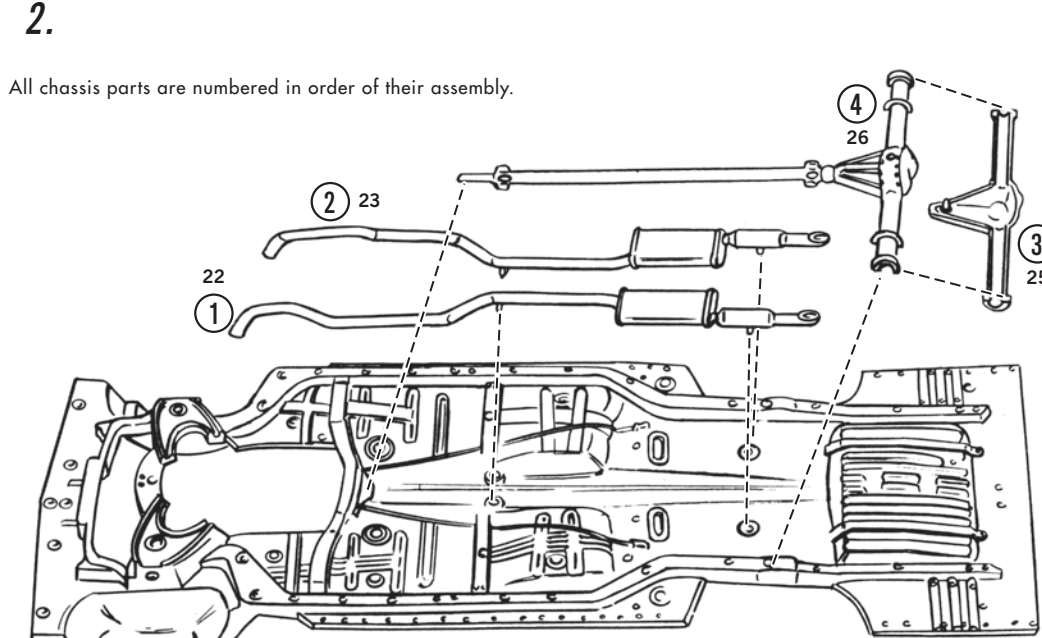
All four wheels assemble in the same manner.

INTERIOR



All parts numbered in order of their assembly.
Assemble instrument panel before you cement instrument panel to interior.

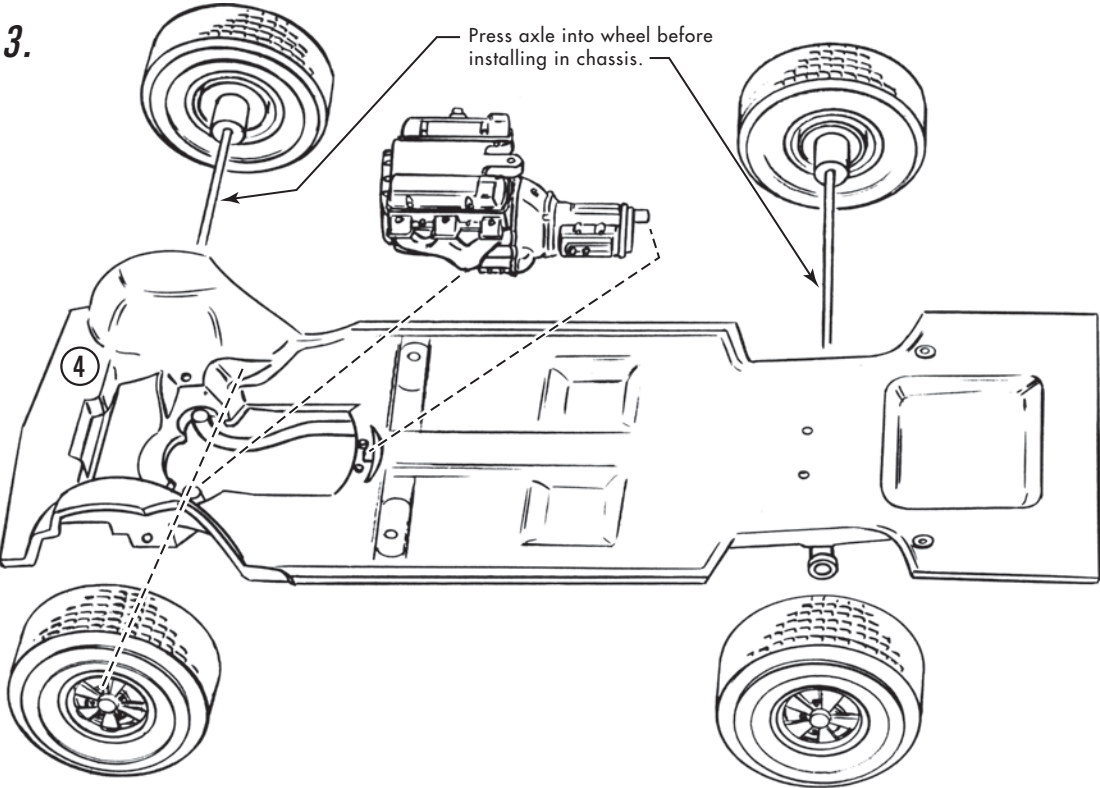
CHASSIS



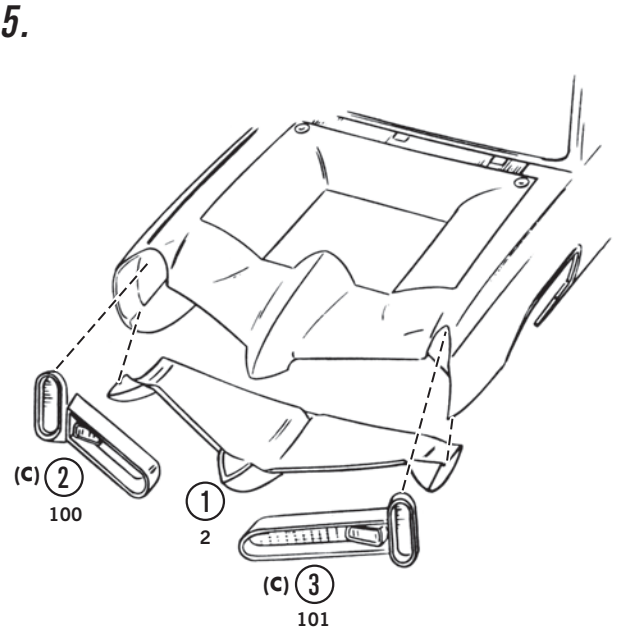
All chassis parts are numbered in order of their assembly.

NOTE: Chassis is shown upside down for clarity.

3.

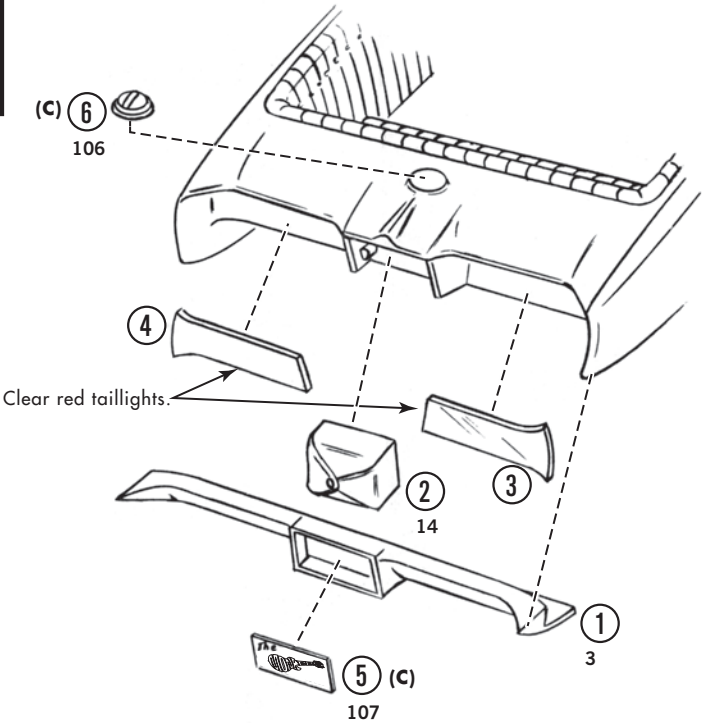


FRONT END



REAR END

4.



If you are going to paint your car, cement rear roll pan and front roll pan to body and allow time for cement to dry before painting.

INTERIOR TO BODY

6.

