



IMPORTANT!

Before you begin building, look over the instructions carefully. Following the procedure given, test fit parts together without cementing. This way you will be more familiar with the location of parts when it becomes time to use cement.

For removing small parts from the "runners" it is best to use a modelers knife. Do not attempt to "twist" them off.

The highest quality styrene plastic goes into the making of each MPC model. Only paint and cement for styrene should

be used. Before joining parts, trim off excess plastic or "flash." Scrape plating from chromed parts where they are to be joined to other parts. Be careful not to get cement on exposed areas. To join parts use cement sparingly. Apply cement to small parts with a toothpick.

When painting your model it is best to cement all non-chromed pieces to the body and paint the whole unit at one time.

You should have no trouble assembling your kit if the instructions are followed properly. The parts are numbered in order of assembly. Chrome parts are indicated (C).

SKILL
2
LEVEL



Contents include: All plastic pieces to complete model and pictorial instructions describing assembly. Paint and glue not included.



Round 2, LLC
4073 Meghan Beeler Ct.
South Bend, IN 46628



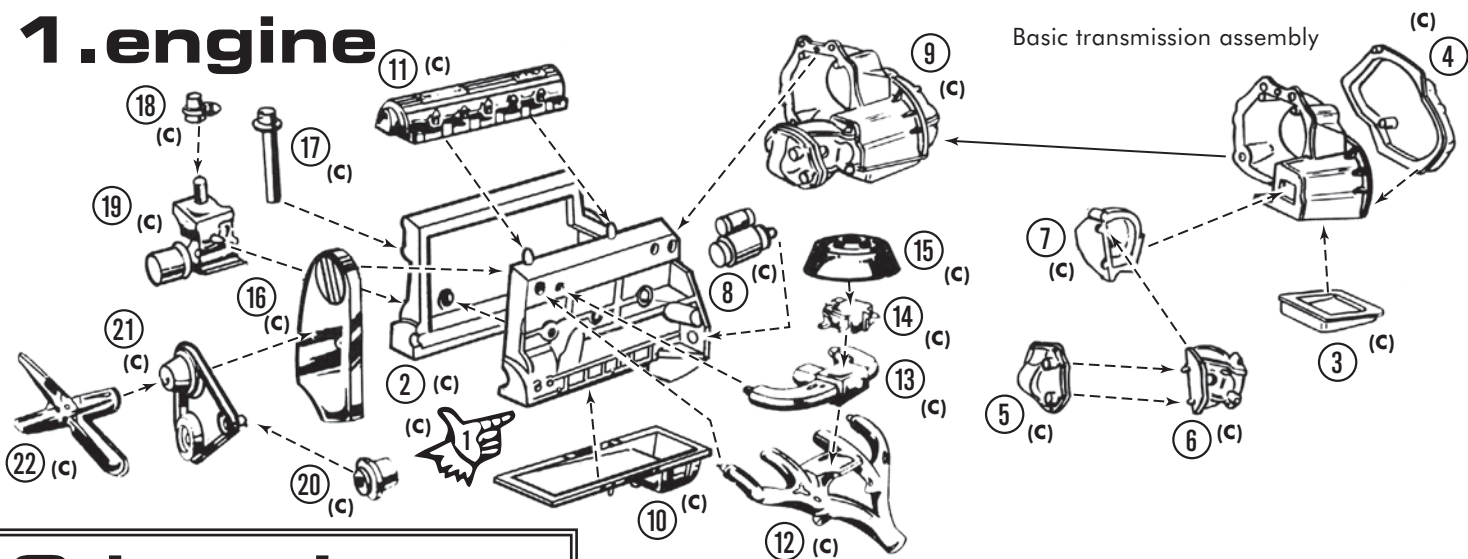
International Hobbycraft (UK) Ltd.
21 St. Thomas St.
Bristol BS1 6JS England

round2models.com

collectormodel.com

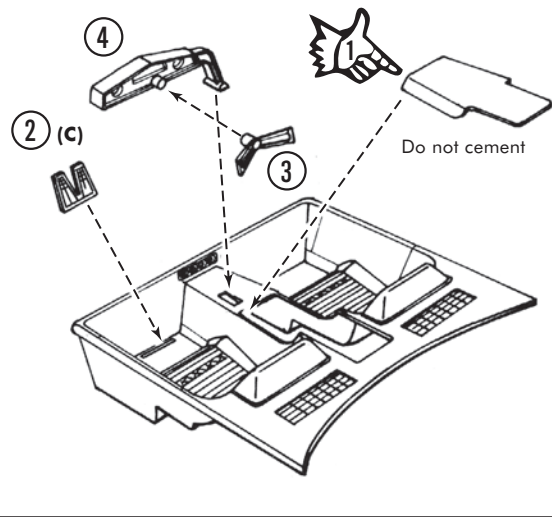
Round 2 and design MPC and design are registered trademarks of Round 2, LLC. ©2012 Round 2, LLC, South Bend, IN 46628 USA. Product and packaging designed in the USA. Made in China. All rights reserved.

1. engine



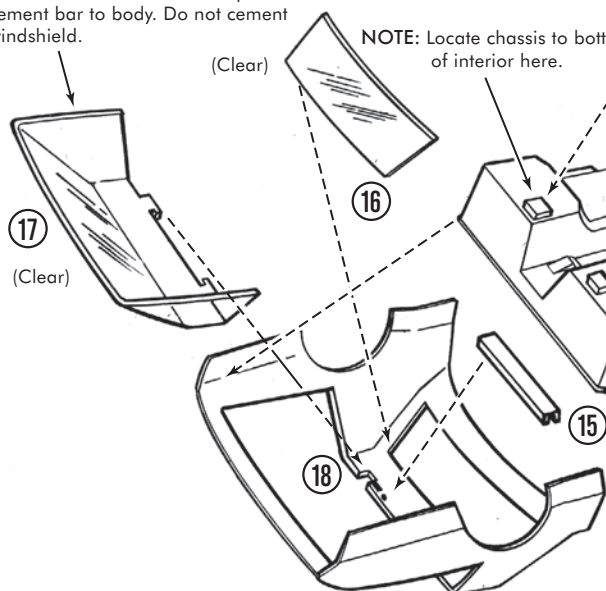
Basic transmission assembly

2. interior



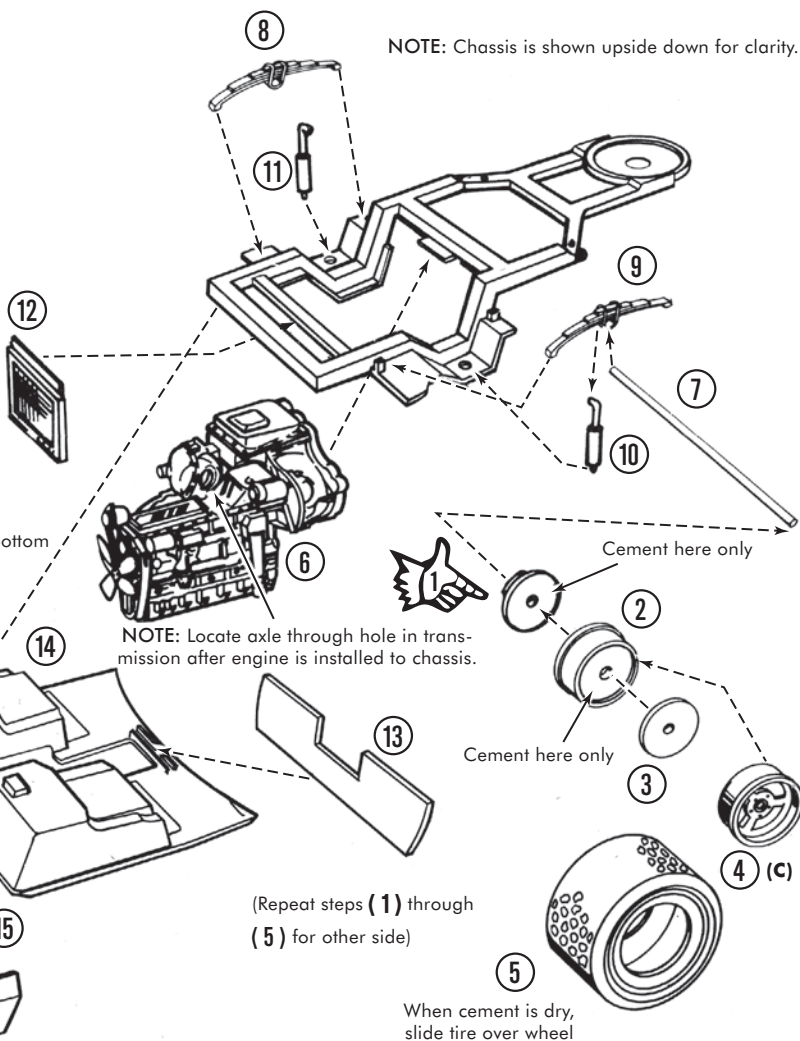
NOTE: Place windshield into position and cement bar to body. Do not cement windshield.

NOTE: Locate chassis to bottom of interior here.



3. chassis-wheels

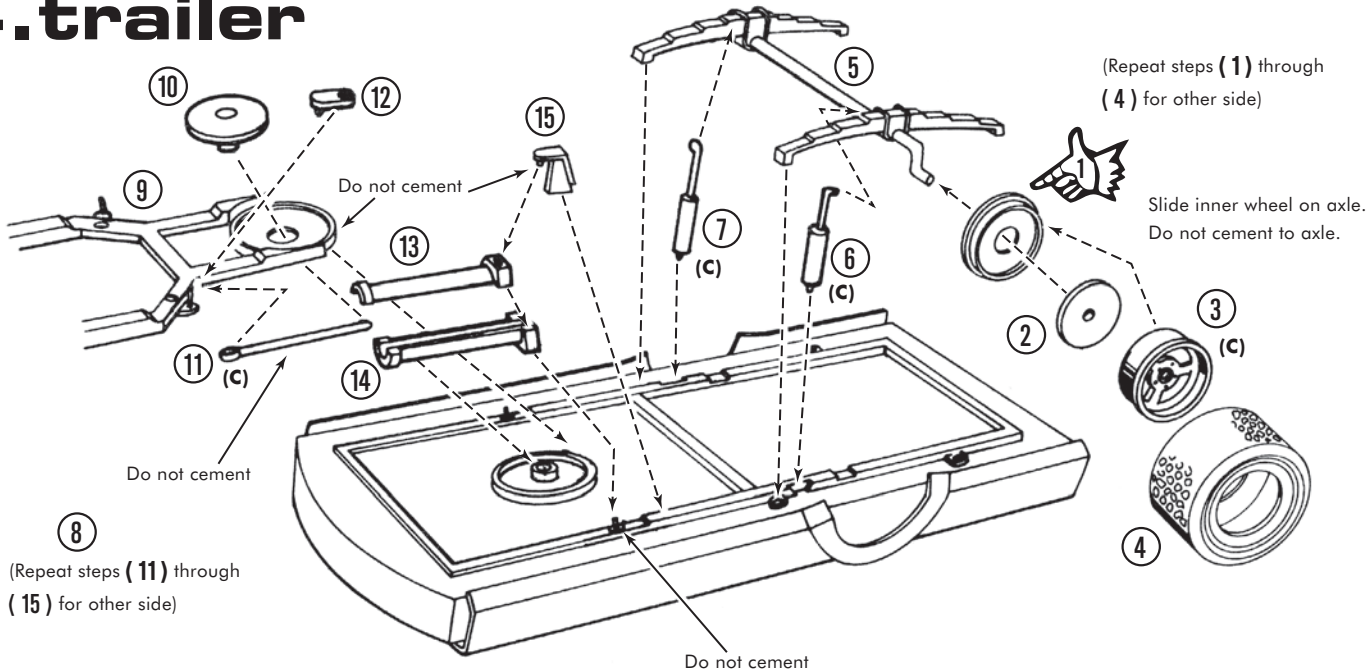
NOTE: Chassis is shown upside down for clarity.



(Repeat steps (1) through (5) for other side)

When cement is dry, slide tire over wheel

4.trailer



5.completion

