



M788-200

PLEASE READ THIS FIRST:

Before you begin any construction, please look over and read this instruction sheet. Study each illustration carefully. Scrape plating and/or paint from cement contact points. Use only cement and paint designed for styrene plastic. As you build this kit, work assembly by assembly in order. Do not skip around. If you have any difficulty, go back and re-read step by step.

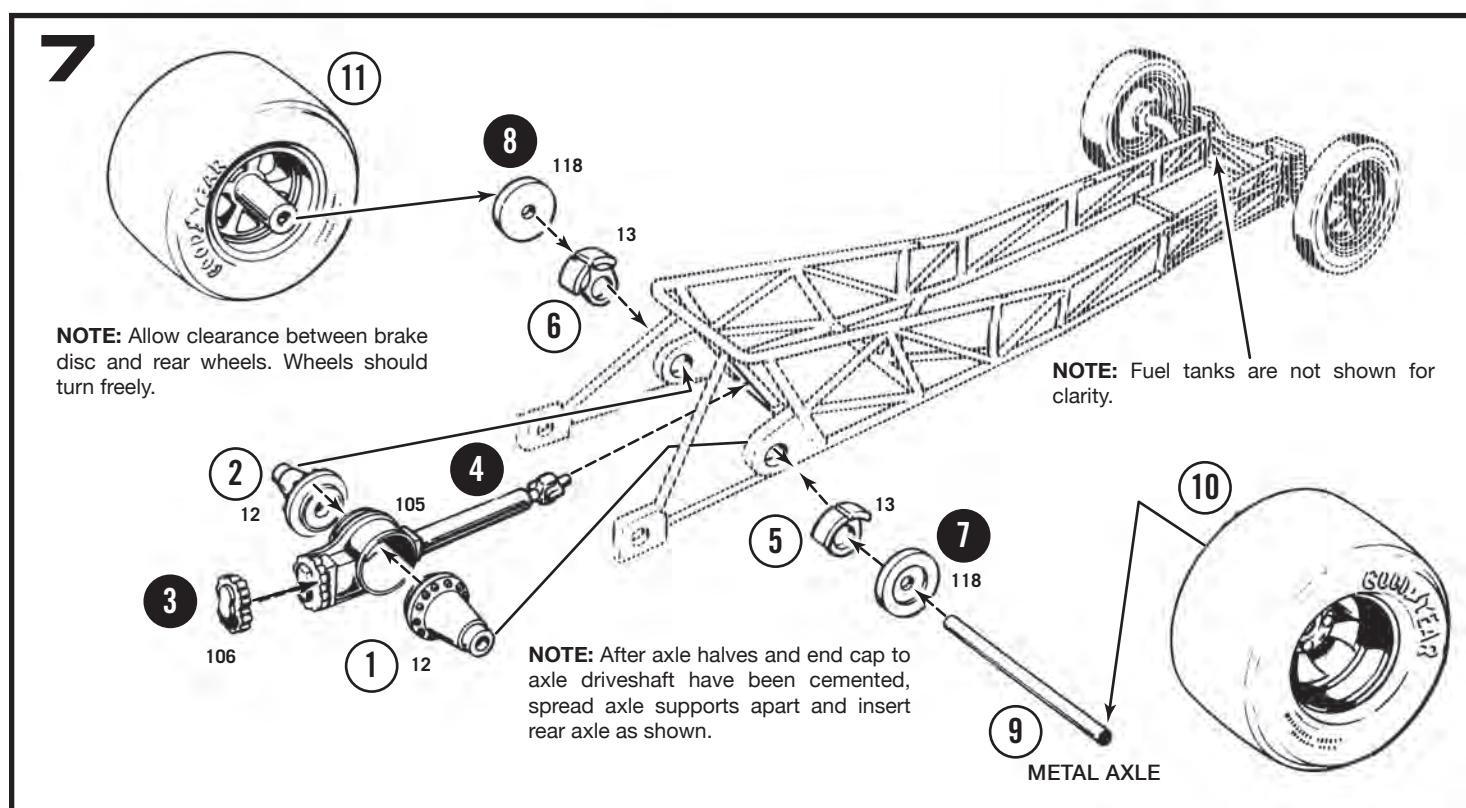
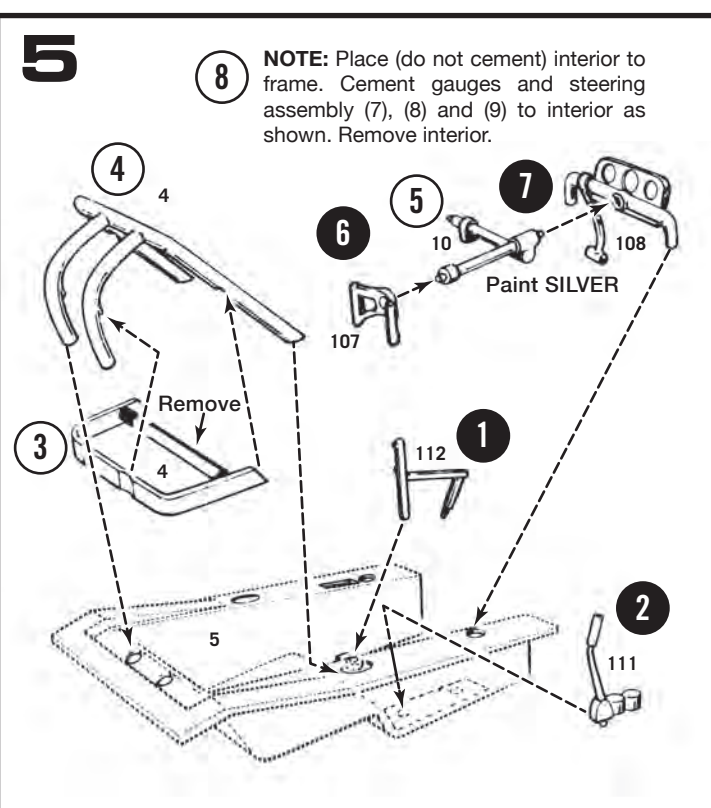
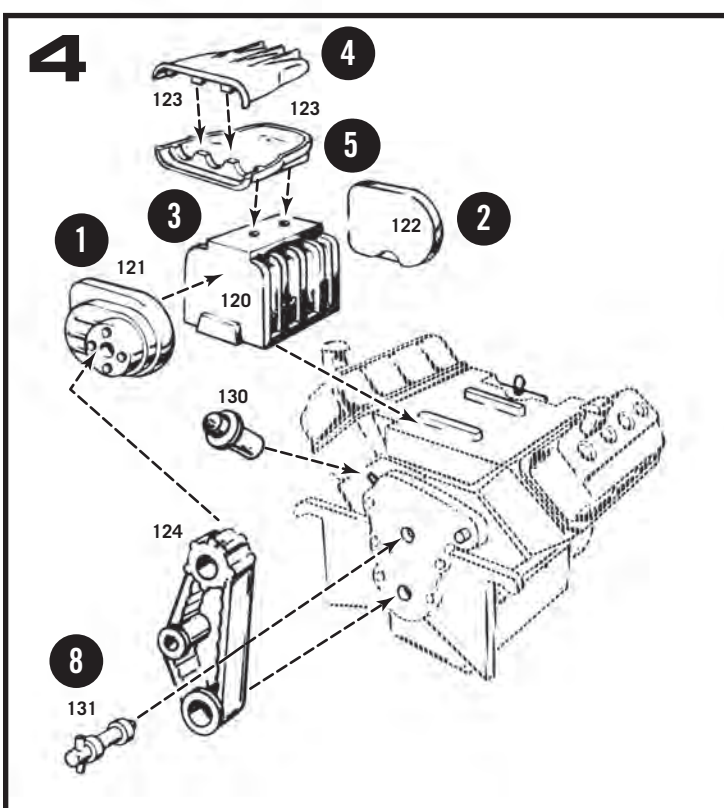
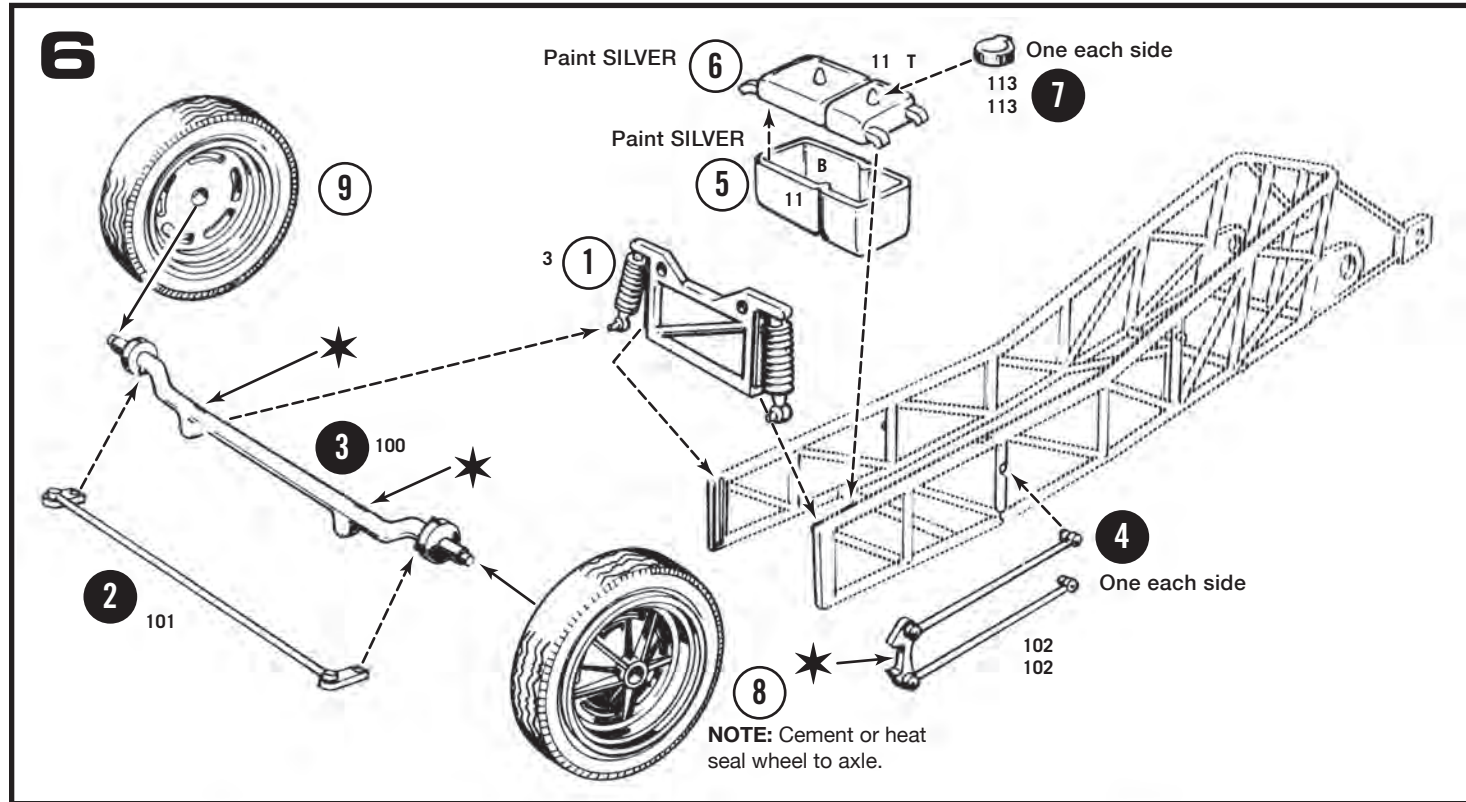
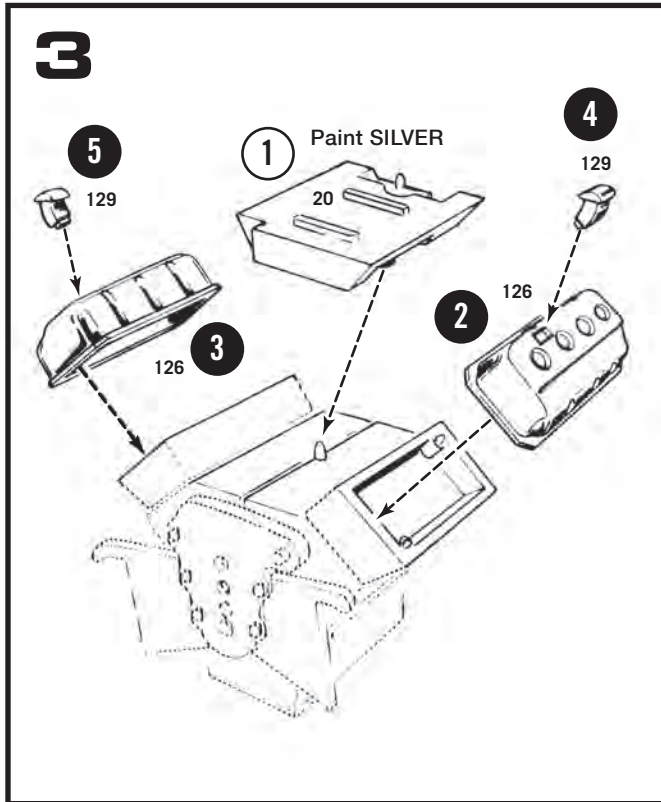
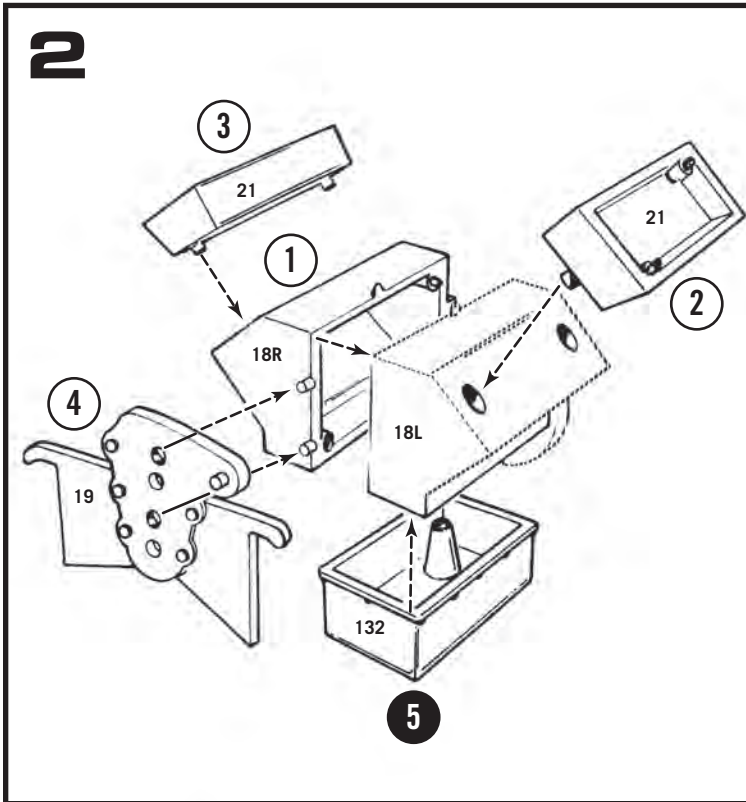
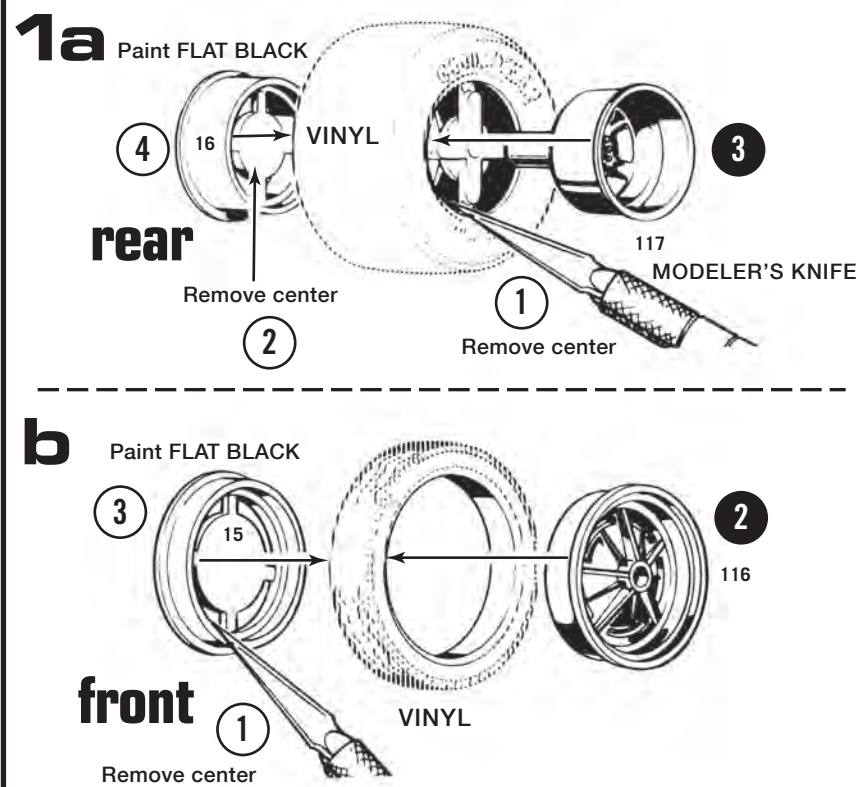
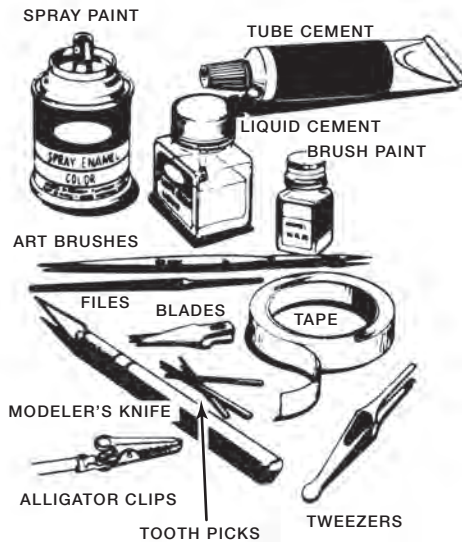
ASSEMBLY PROCEDURE NUMBERS

- 1 NON-PLATED PARTS
1 PLATED PARTS
1 PART NUMBERS

FOLLOW THE NUMBERS
STEP-BY-STEP



Shown below are an assortment of supplies and tools which will help you with your construction.
WORK CAREFULLY TAKE YOUR TIME



8

NOTE: Cement gas pedal as shown, then locate interior to frame.

2 INTERIOR

1 110

6 14

3 27

4 27

5 14

NOTE: Locate interior side panel the same way for other side.

9

This diagram illustrates the assembly of the engine and transmission onto the chassis. The engine (3) is shown being mounted to the chassis (103) using a long bolt (7) and a nut (6). The transmission (2) is shown being mounted to the engine block (3) using a pin (1) and a nut (9). The drive shaft (4) is shown being inserted into the transmission. The diagram also shows the location of the 2-speed transmission (2) relative to the engine block (3) and the chassis (103). The diagram includes the following numbered parts:

- 1: Pin
- 2: 2-speed transmission
- 3: Engine block
- 4: Drive shaft
- 5: Bolt
- 6: Nut
- 7: Bolt
- 9: Nut
- 103: Chassis
- 104: Nut

NOTE: Cement 2-speed transmission to interior bulkhead and locate to rear of engine block. Cement to chassis. Cement left and right headers to engine block. Note 2-speed transmission locates to pin on drive shaft in interior.

10

Diagram 10 illustrates the assembly of the front of the car body. The main view shows the car body from the front, with dashed lines indicating the attachment points for the front chassis components. The components are labeled as follows:

- 1**: One each side (On top side) - A small metal pin or clip, labeled 114.
- 2**: Clear - A small plastic piece, labeled 34.
- 3**: A small plastic piece, labeled 35.
- 4**: A small plastic piece, labeled 36.

The diagram shows the car body being attached to the chassis using these components. The front chassis components are shown in a separate view, with dashed lines indicating their attachment points to the car body.

11

Decal
KIRBY BUTTER & BODIES FILLER
Light Colors

Decal

Decal

Decal

Decal

Decal

Optional

Decal

* **AMALIE PRO** Racing Oil

399 EC

12

DO NOT CEMENT BODY TO FRAME

Decal

Paint SILVER

399

COMM-FART

26

2

BODY SUPPORT

NOTE: Locate pins on rear bulkhead to rear body support mounts. **DO NOT CEMENT.**

NOTE: Locate body support as shown. Top part of body support locates to front bulkhead. **DO NOT CEMENT.**

13

1

NOTE: To make shock cords and parachute lines for chutes in this kit, cut four (4) pieces of string (shock cord) four inches long and sixteen (16) pieces of string (chute lines) eight inches long. Cement lines under chute ends as shown in illustration. Tie together all loose ends on one side of parachute (8 strings for each side of the chute) into knot. Take the ends of the shock cords and tie to body supports, as shown, and the other ends of shock cords to knots connecting parachute lines. Proceed to do the same for other chute. You may add a little cement to all connecting points on shock cords, chute lines, and on body support mounts for security.

The diagram illustrates the assembly of a parachute. On the left, a 'SHOCK CORD' is shown with a knot at one end and a hook at the other. In the center, 'CHUTE LINES STRING' are shown connecting to the parachute. On the right, the 'PARACHUTE' canopy is shown with 'STRING' attached to its top edge. A label 'Paint FLAT RED' with an arrow points to the top edge of the parachute canopy. A circled number '2' with an arrow points to the connection point between the shock cord and the chute lines.

MPC760 CARL CASPER'S YOUNG AMERICAN DRAGSTER



TRADE MARKS AND © NATIONAL HOT ROD ASSOCIATION 2012. ALL RIGHTS RESERVED. THE TRADEMARK "NHRA" AND OTHER TRADEMARKS USED ARE THE EXCLUSIVE PROPERTY OF THE NATIONAL HOT ROD ASSOCIATION AND USED ONLY WITH ITS PERMISSION. NHRA AND THE NHRA NAMES AMONG THE LOGOS ARE SERVICE MARKS, TRADEMARKS AND/OR REGISTERED TRADEMARKS OF THE NATIONAL HOT ROD ASSOCIATION. Ford Motor Company Trademarks and Trade Dress used under license to Round 2, LLC. www.FordMotorCompany.com. GENERAL MOTORS Trademarks used under license to Round 2, LLC. Goodyear (and wing foot design) and Eagle are trademarks of The Goodyear Tire & Rubber Company, Akron, Ohio USA used under license by Round 2, LLC. Other names and trademarks used under license to Round 2, LLC or by permission. MPC and Legends of the Quarter Mile are trademarks of Round 2, LLC. ©2012 Round 2, LLC, South Bend, IN 46628 USA. Product and packaging designed in the USA. Made in China. All rights reserved.