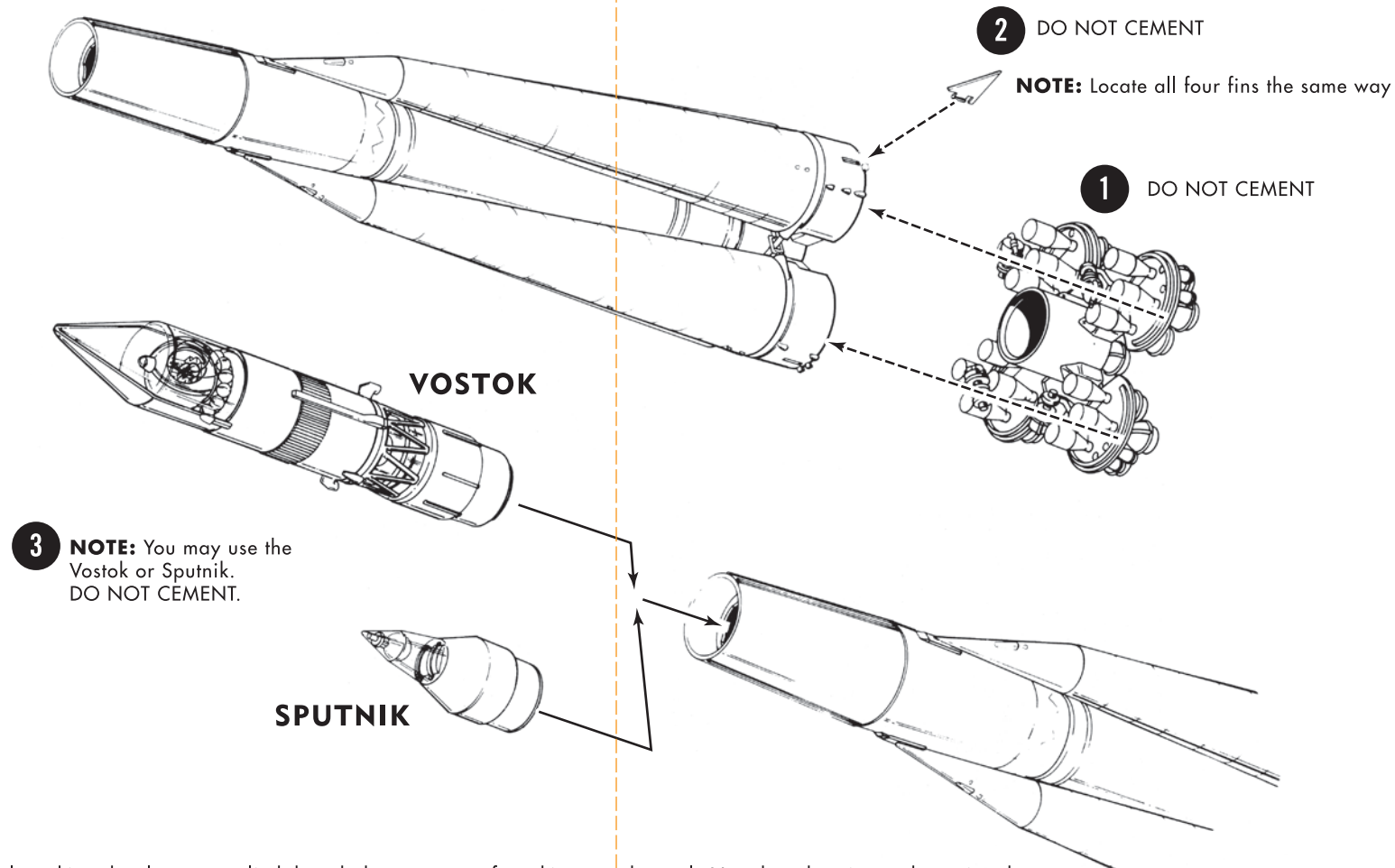
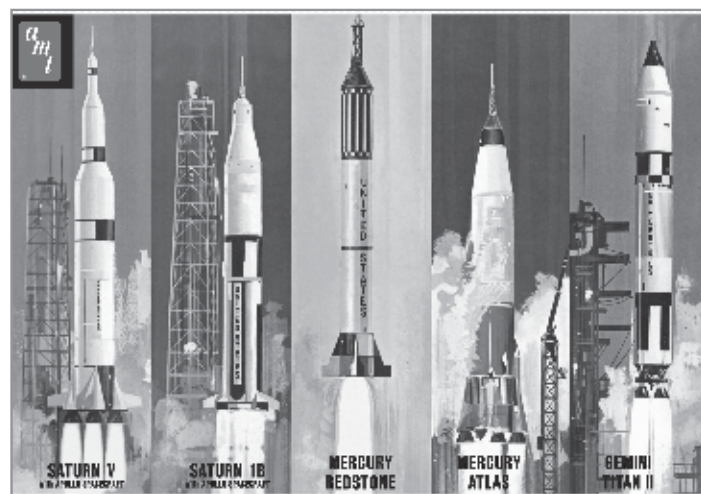


FINAL ASSEMBLIES



NOTE: Optional marking decals are supplied though the presence of markings on the early Vostok rockets is unsubstantiated. They have been included to be used at the discretion of the modeler.

ALSO LOOK FOR



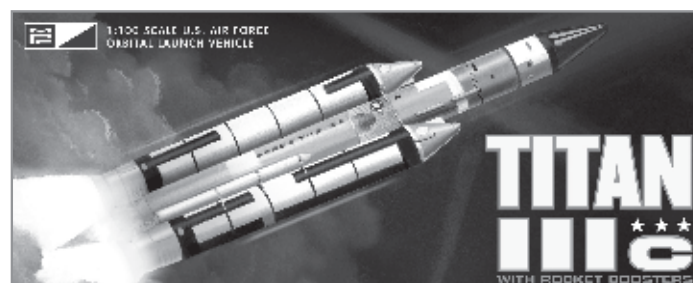
MAN IN SPACE • AMT846/06

**FIND EVEN MORE
GREAT PRODUCTS AT
ROUND2MODELS.COM**

 facebook.com/Round2Models



SATURN V • AMT846/06



TITAN IIIC • MPC790/06

MPC is a registered trademark of Round 2, LLC. Other names and trademarks used under license to Round 2, LLC or by permission. ©2013 Round 2, LLC, South Bend, IN 46628 USA. Product and packaging designed in the USA. Made in USA. All rights reserved.

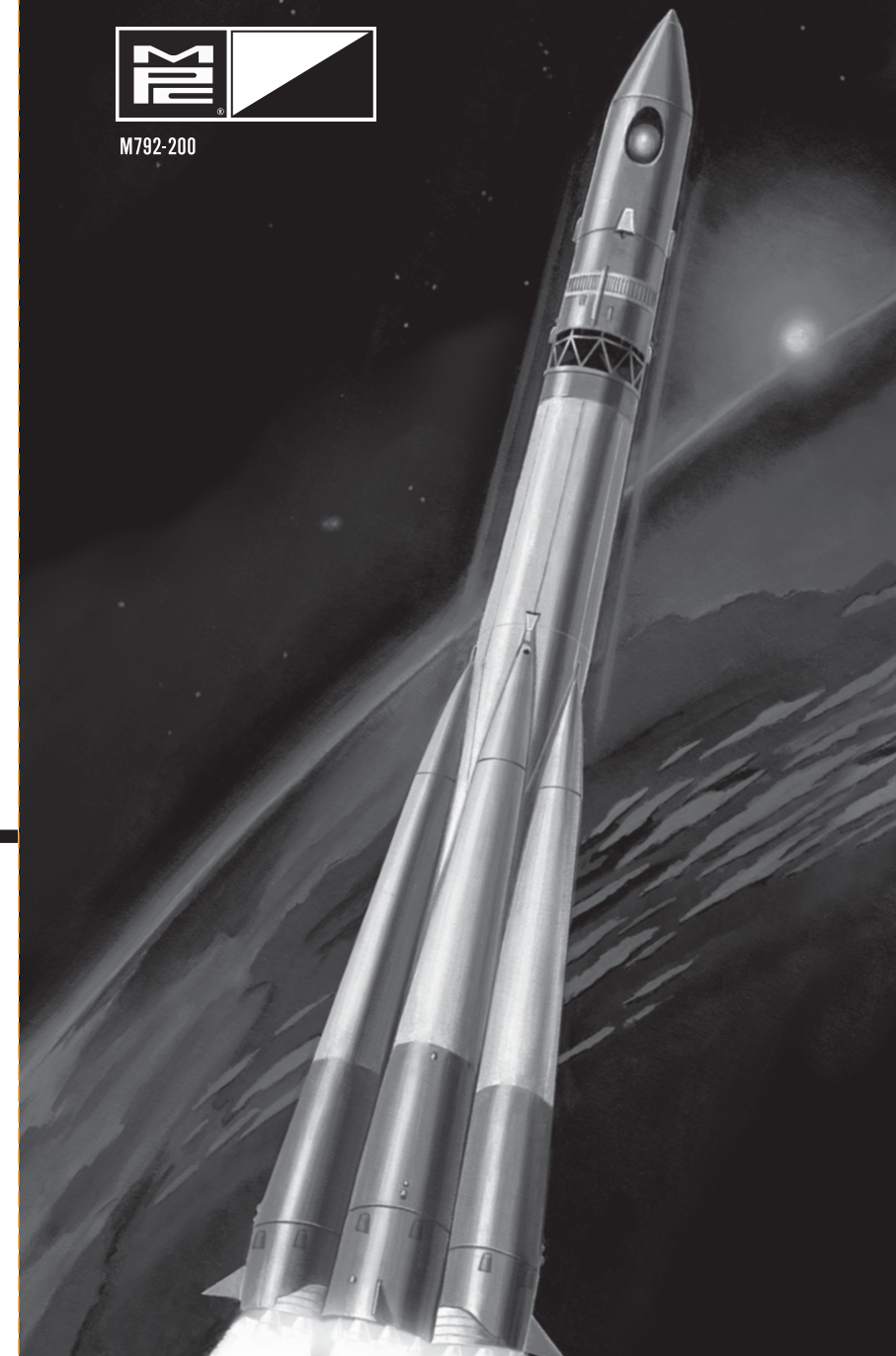
1:100 SCALE GLUE-TOGETHER MODEL KIT

VOSTOK

WITH VOSTOK SA "SHARIK" AND SPUTNIK



M792-200



IMPORTANT! READ THIS FIRST Before you begin building, look over the instructions carefully. Following the procedure given, test fit parts together without cementing. This way you will be more familiar with the location of parts when it becomes time to use cement.

For removing small parts from the "runners" it is best to use a modelers knife. Do not attempt to "twist" them off.

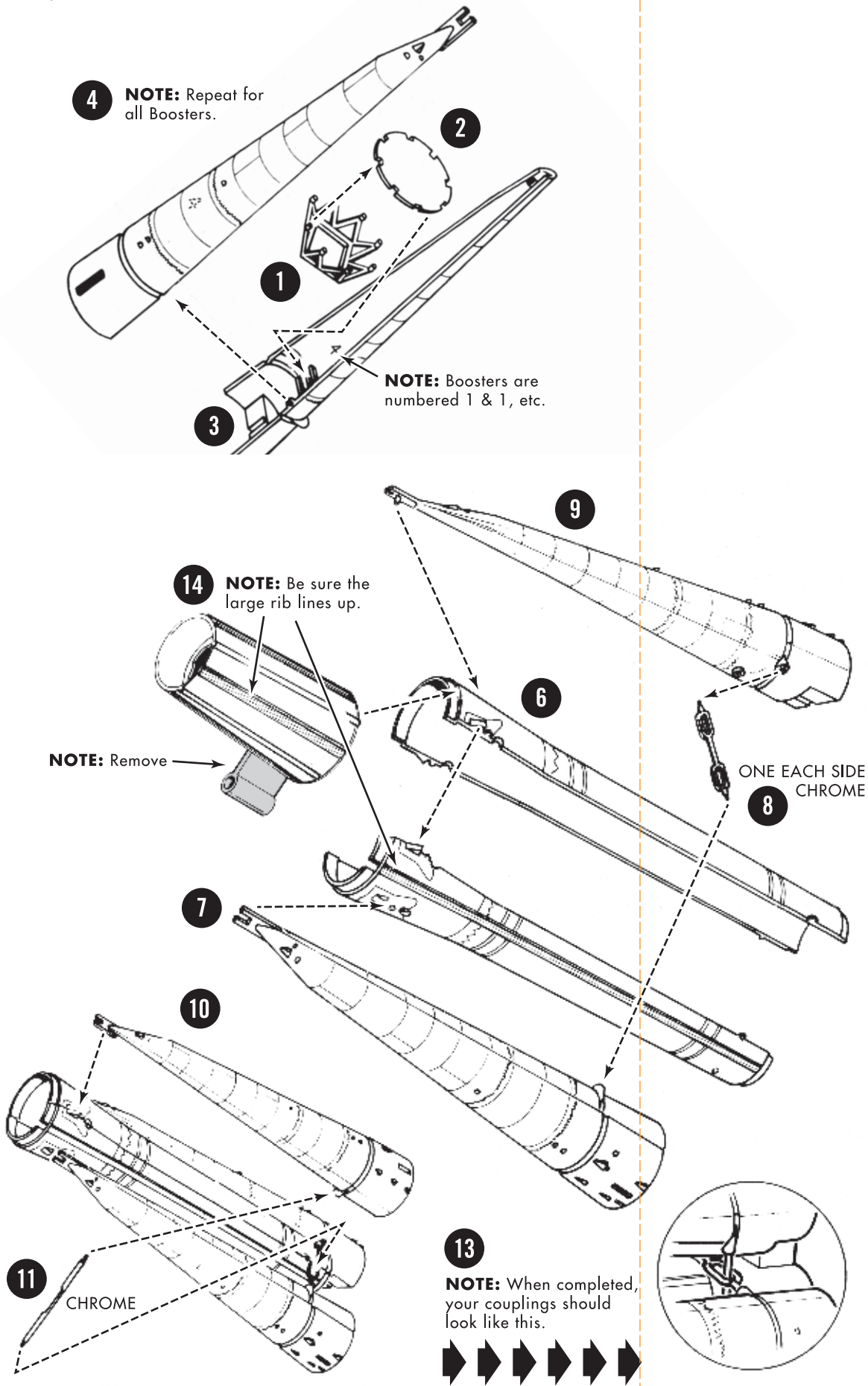
The highest quality styrene plastic goes into the making of each MPC model. Only paint and cement for styrene should be used. Before joining parts, trim off excess plastic or "flash." Scrape plating from chrome parts where they are to be joined with other parts. Be careful not to get cement on exposed areas. To join parts use cement sparingly. Apply cement to small parts with a toothpick.

When painting your model it is best to cement all non-chrome accessories to the body and paint the whole unit at one time. Chrome parts are indicated (CHROME).

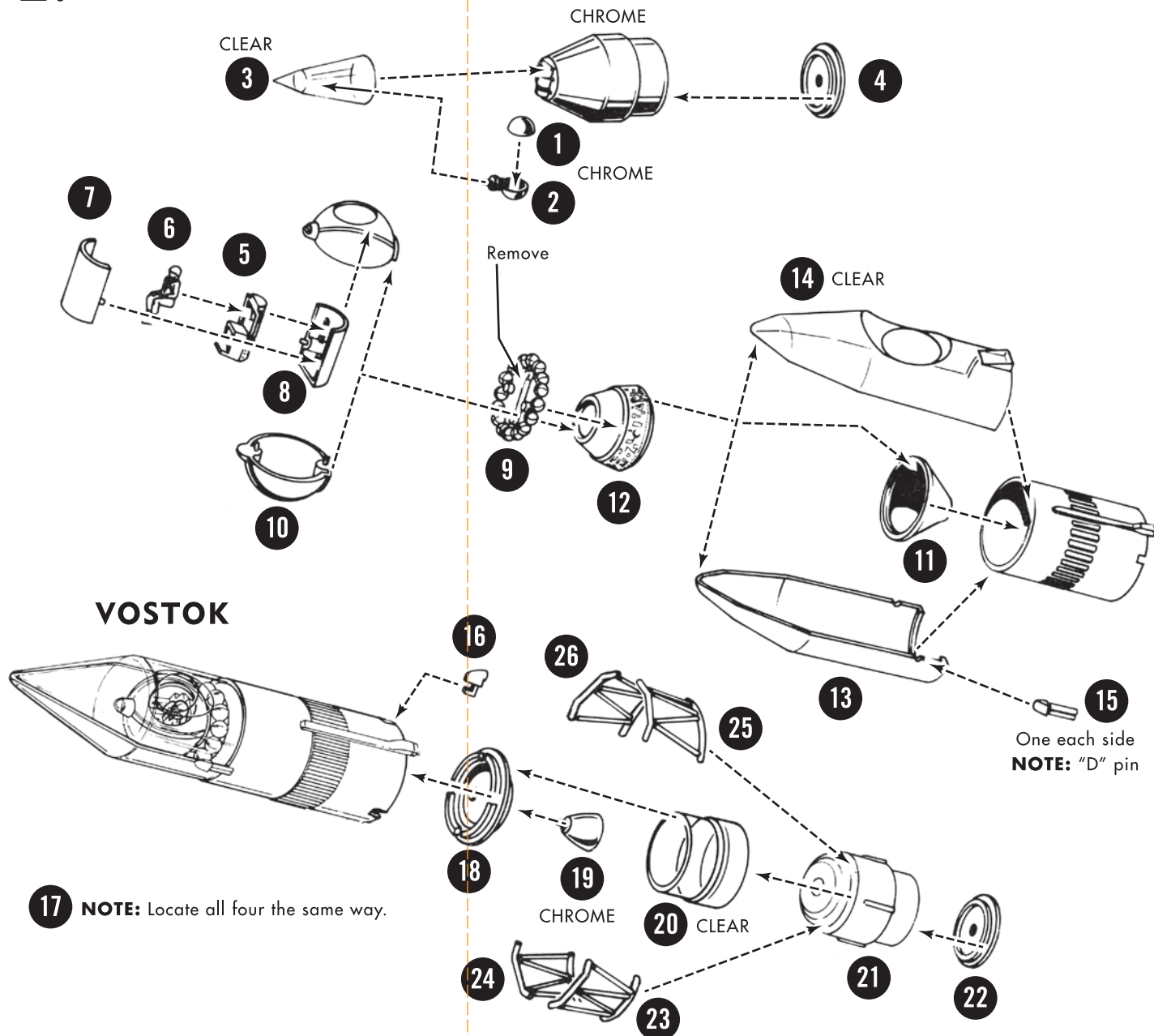
NOTE: Due to the vintage nature of this kit, some additional parts may not be utilized.

SUB-ASSEMBLIES

1.



2. SPUTNIK



3.

