

SPACE: 1999

THE ALIEN

IMPORTANT: READ THIS FIRST!

Before you begin building, look over this instruction carefully. Following the procedure given, test-fit parts together without cementing. This way you will be more familiar with the location of parts when it becomes time to use cement.

For removing small parts from the "runners" it is best to use a modelers knife, do not attempt to "twist" them off.

The highest quality styrene plastic goes into the making of each MPC model. Only pain and cement made for styrene should be used. Before joining parts, trim off excess plastic of "flash." Scrape plating from chromed parts where they are to be joined with other parts. Ne careful not to get cement on exposed areas. To join parts, use cement sparingly. Apply cement to very small parts with a toothpick.

When painting your model it is best to cement all non chromed accessories to the body and paint the whole unit at one time.

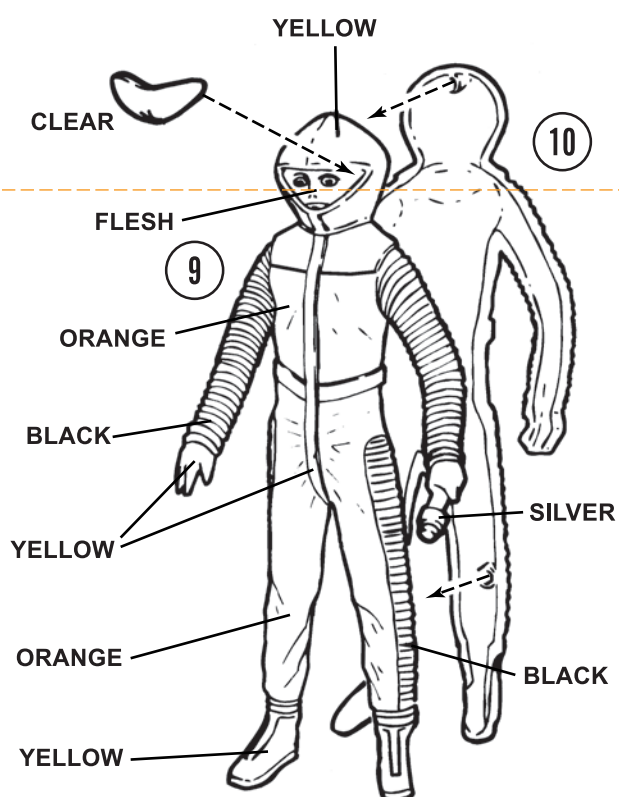
You should have no trouble assembling your kit if the instructions are followed properly. The parts are numbered in order of assembly.

PART NUMBERS

7 NON PLATED PARTS

7 PLATED PARTS

NOTE: Paint figure as shown.
(Use flat colors)



In this kit LOOK FOR

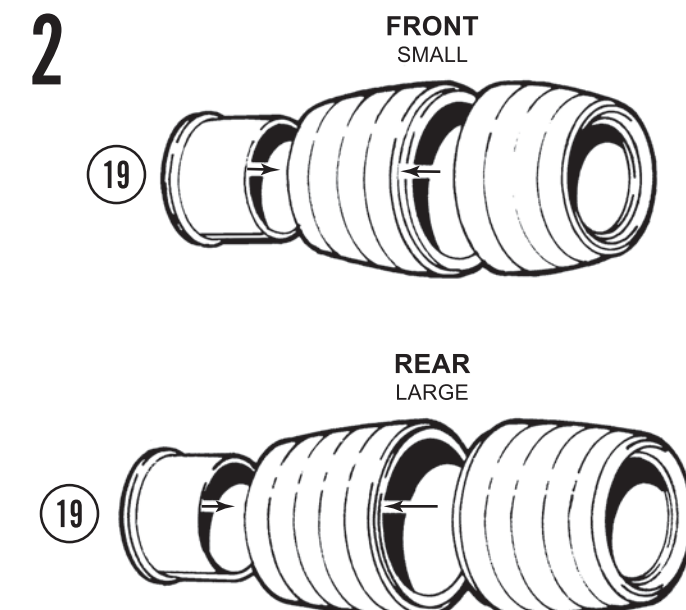
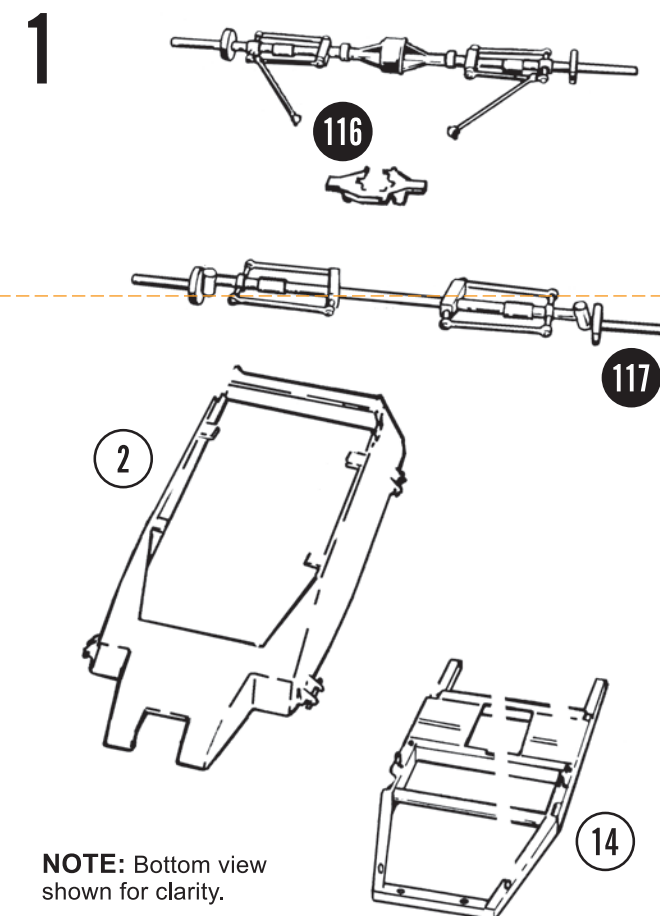
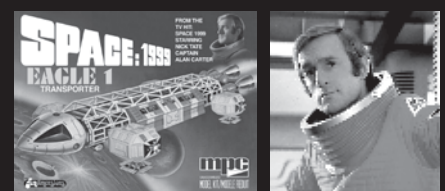
collectible mini print featuring the alien **Maya** as played by

Catherine Schell

Look for 1 of 100 randomly inserted autographed prints!

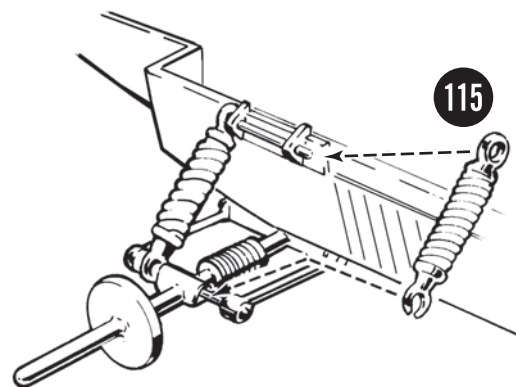


Also look for mini prints in the Space:1999 Eagle-1 kit featuring randomly inserted autographs by **Nick Tate** as **Captain Alan Carter**



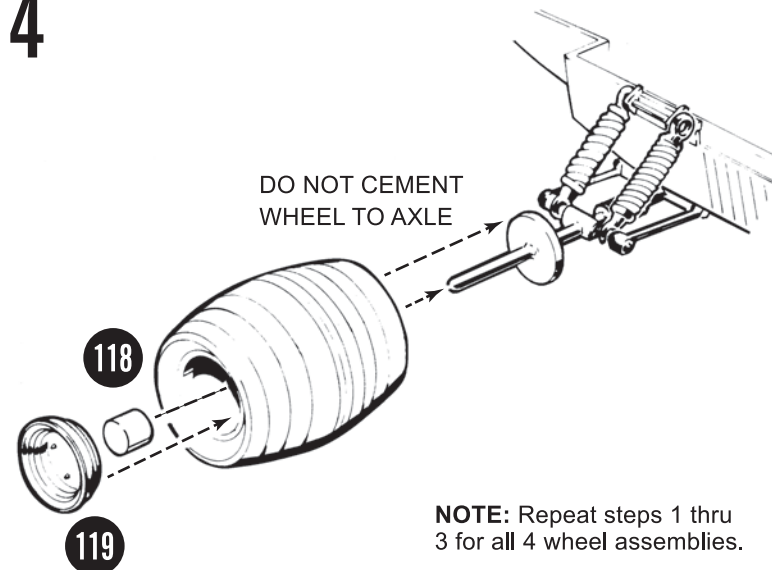
3

NOTE: Locate all 8 shocks as shown.



4

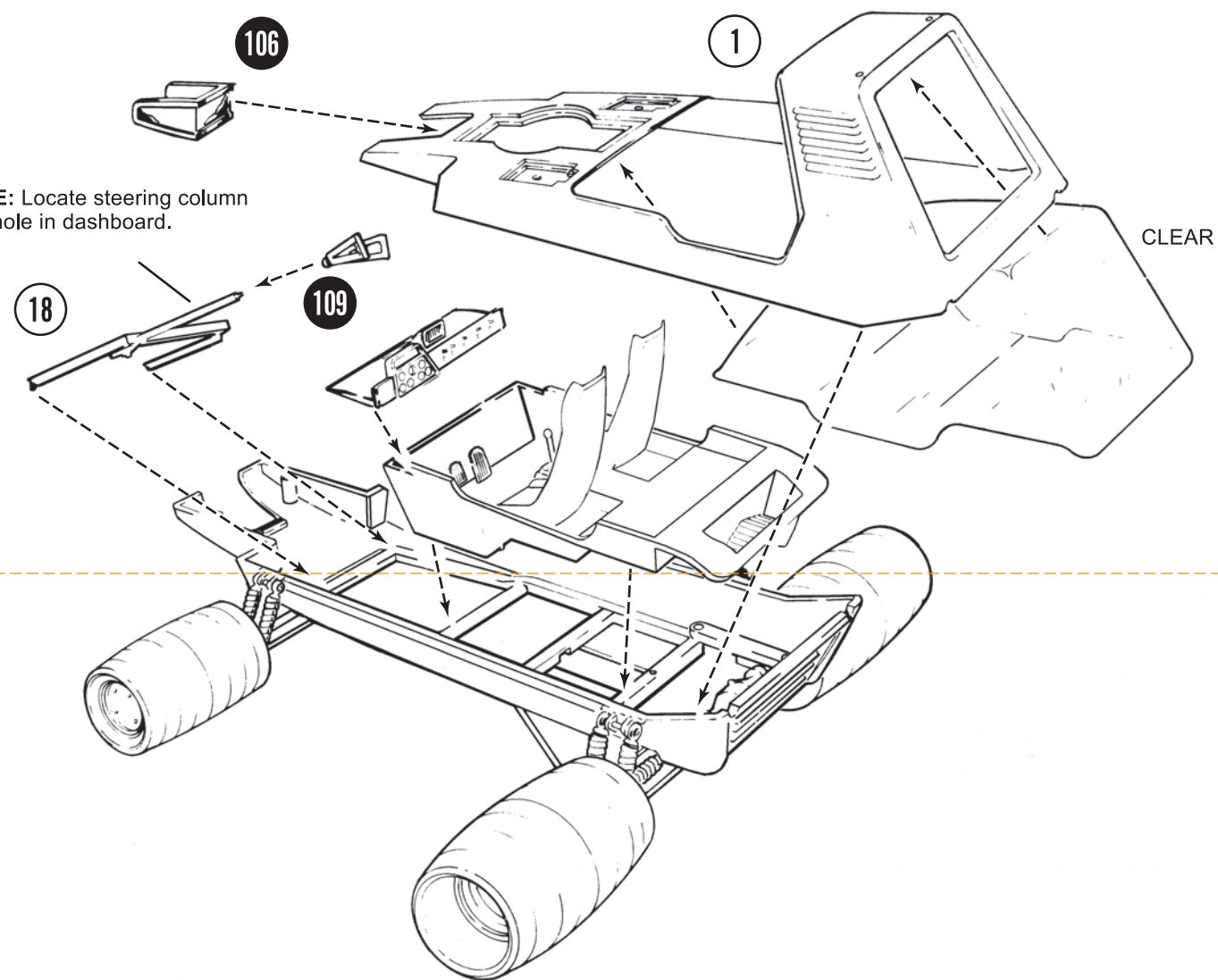
DO NOT CEMENT
WHEEL TO AXLE



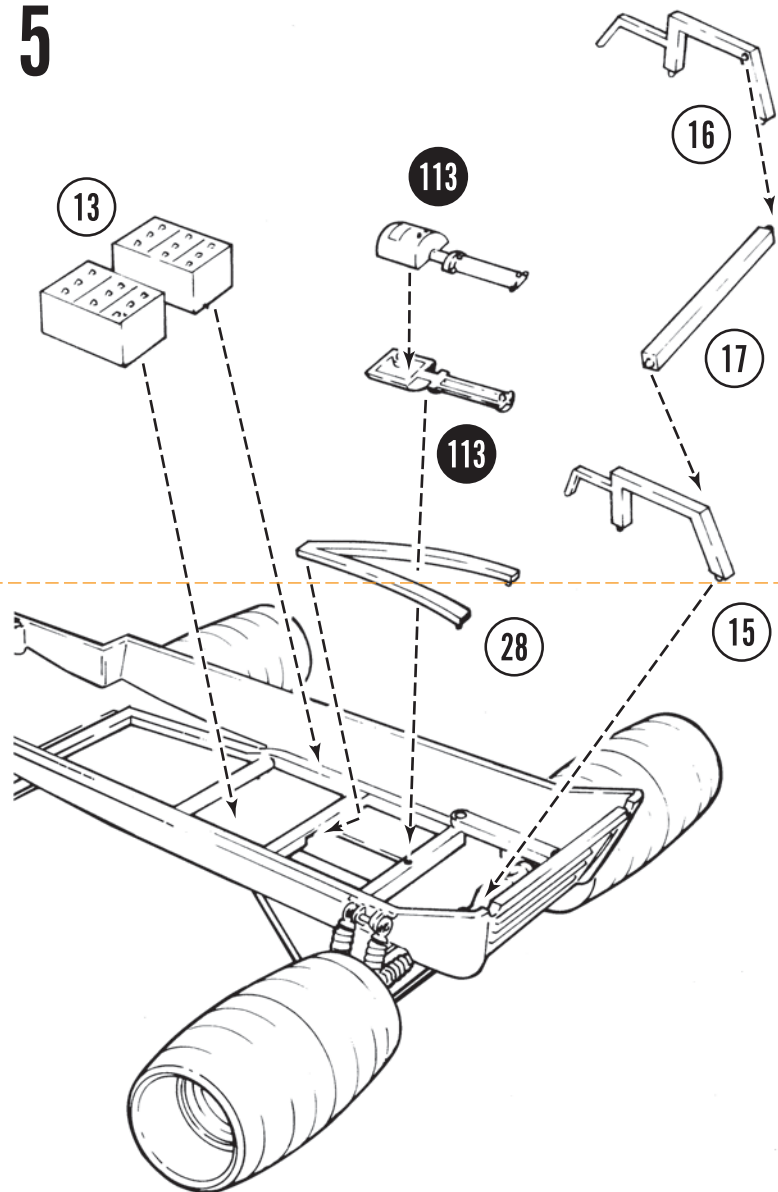
NOTE: Repeat steps 1 thru 3 for all 4 wheel assemblies.

8

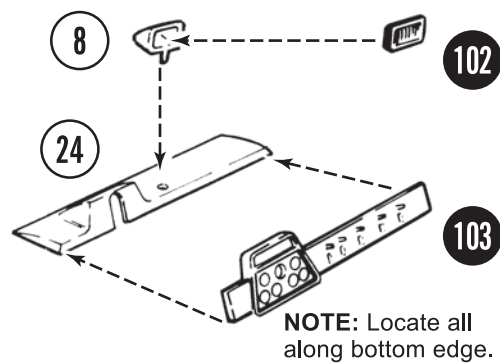
NOTE: Locate steering column
thru hole in dashboard.



5

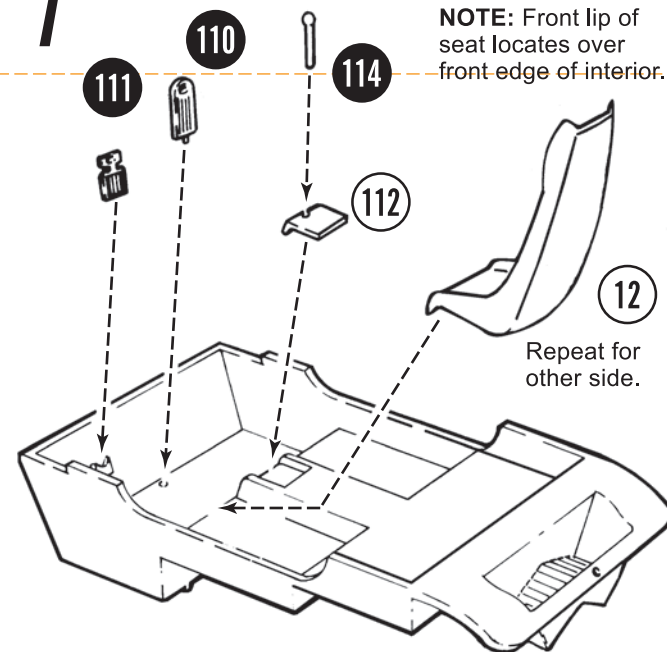


6



7

NOTE: Front lip of
seat locates over
front edge of interior.



9

