

# mpc 75

## Dodge

### DART

### SPORT

#### IMPORTANT! READ THIS FIRST

You may build this kit more than one way. Before you begin building, look over the instructions carefully. Following the procedure given, test-fit parts together without cementing, after you have decided what version to build. This way you will be more familiar with the location of parts when it becomes time to use cement.

For removing small parts from the "runners" it is best to use a modelers knife, do not attempt to "twist" them off.

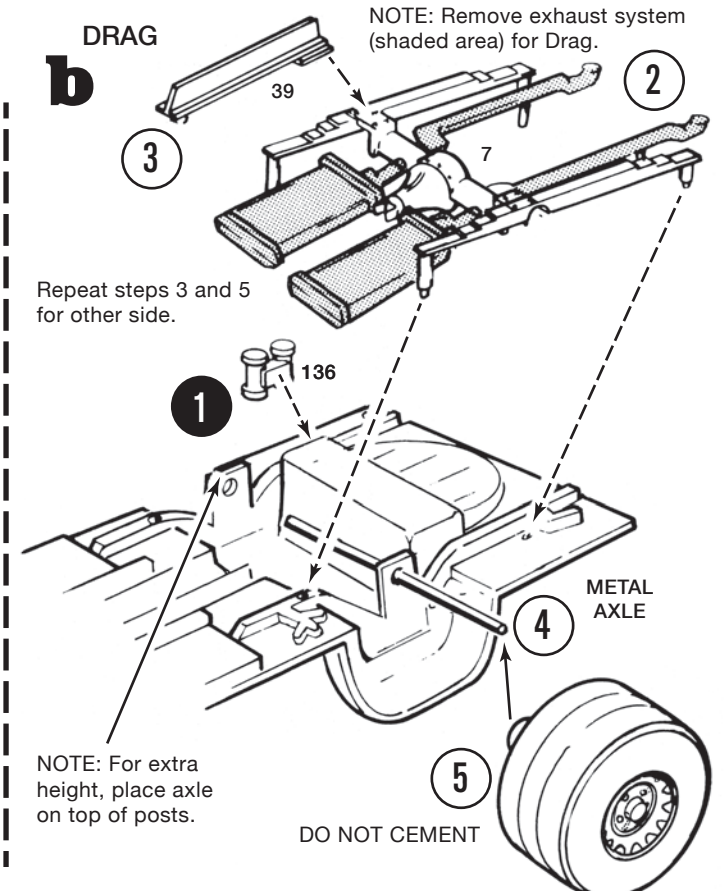
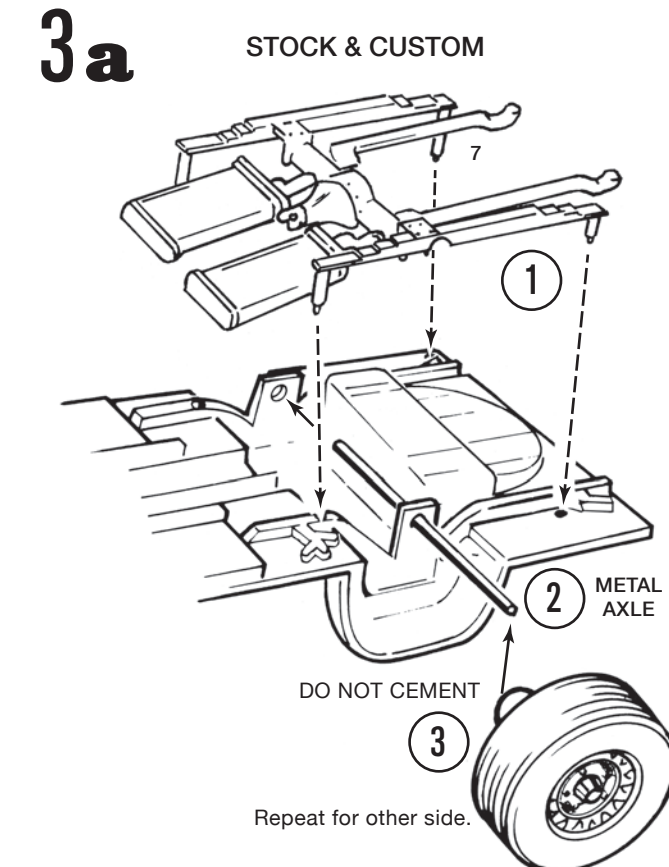
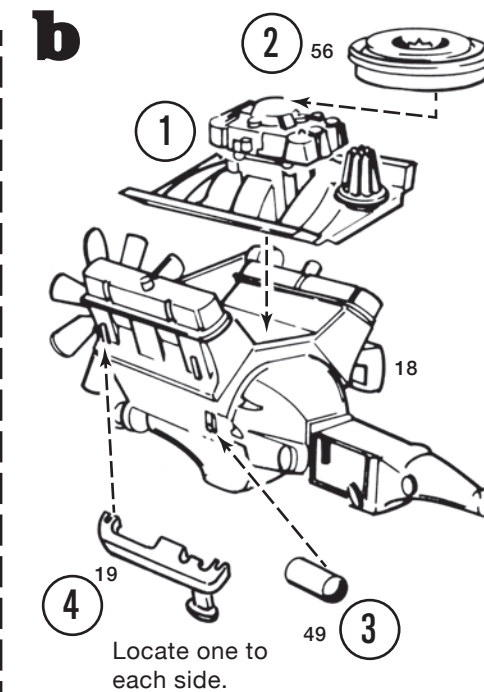
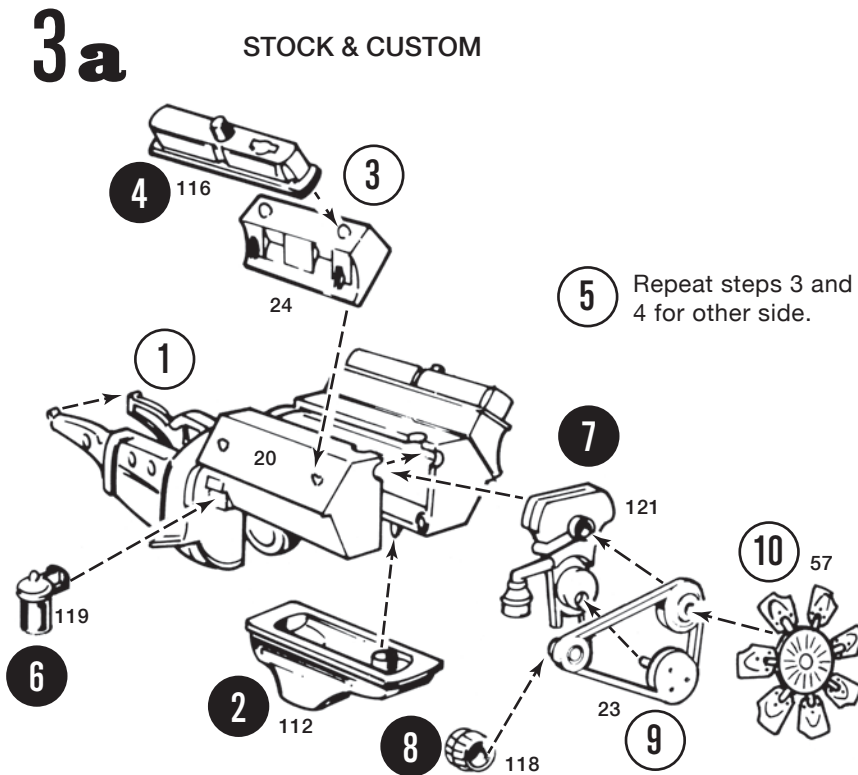
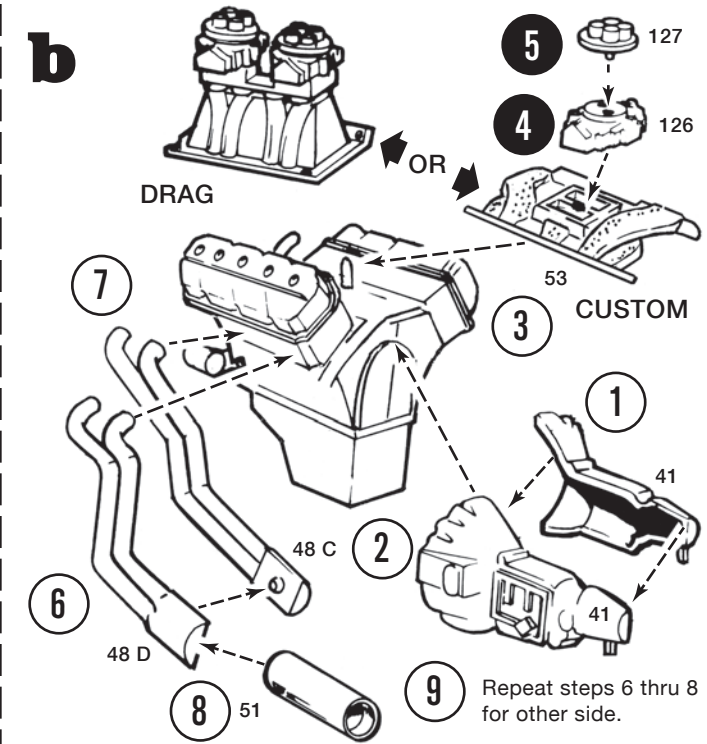
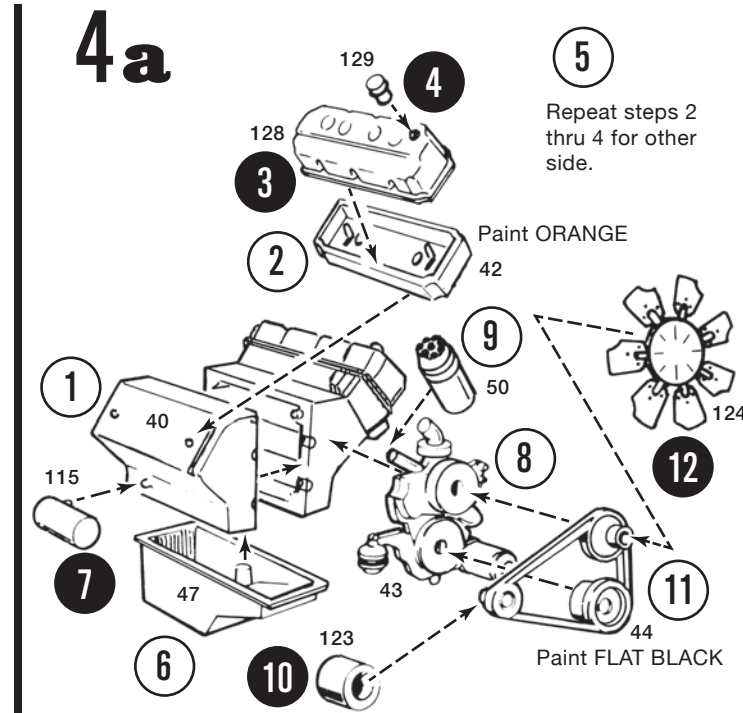
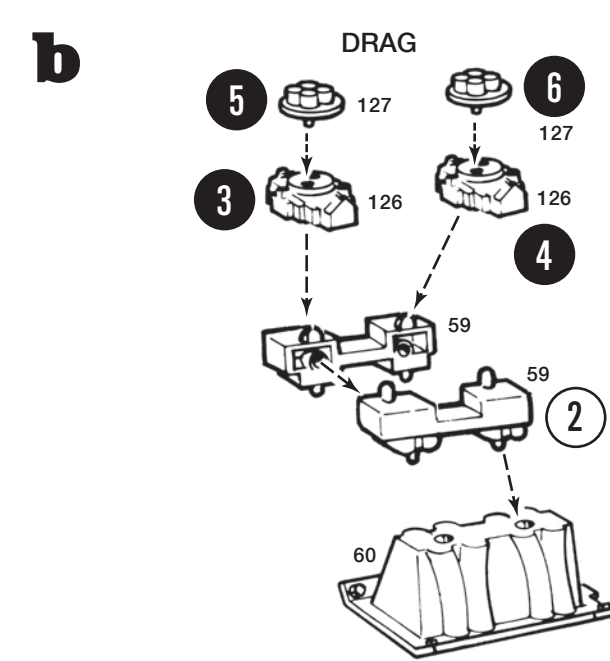
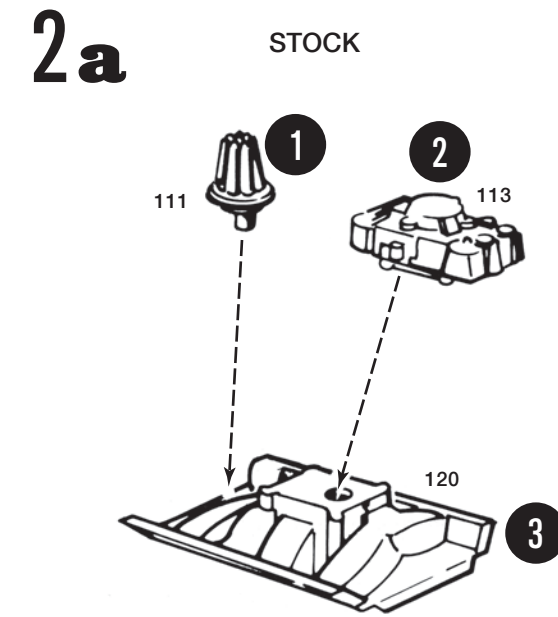
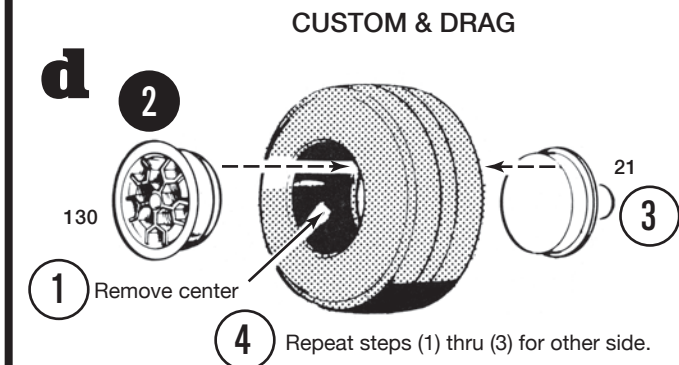
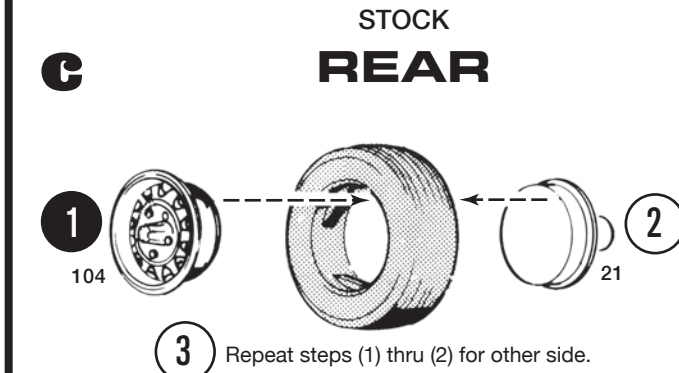
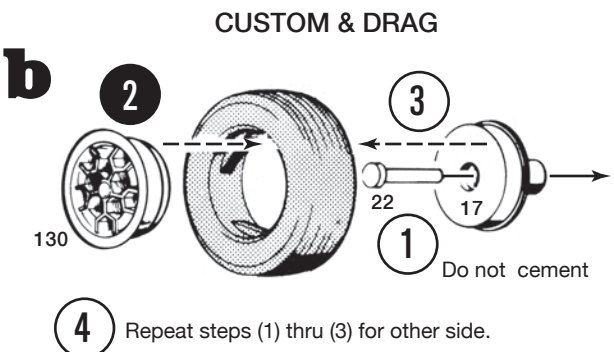
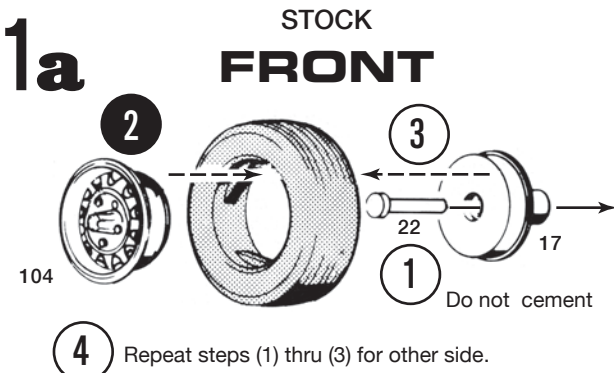
The highest quality styrene plastic goes into the making of each MPC model. Only paint and cement made for styrene should be used. Before joining parts, trim off excess plastic or "flash." Scrape plating from chromed parts where they are to be joined with other parts. Be careful not to get cement on exposed areas. To join parts, use cement sparingly. Apply cement to very small parts with a toothpick.

When painting your model it is best to cement all non-chrome accessories to the body and paint the whole unit at one time.

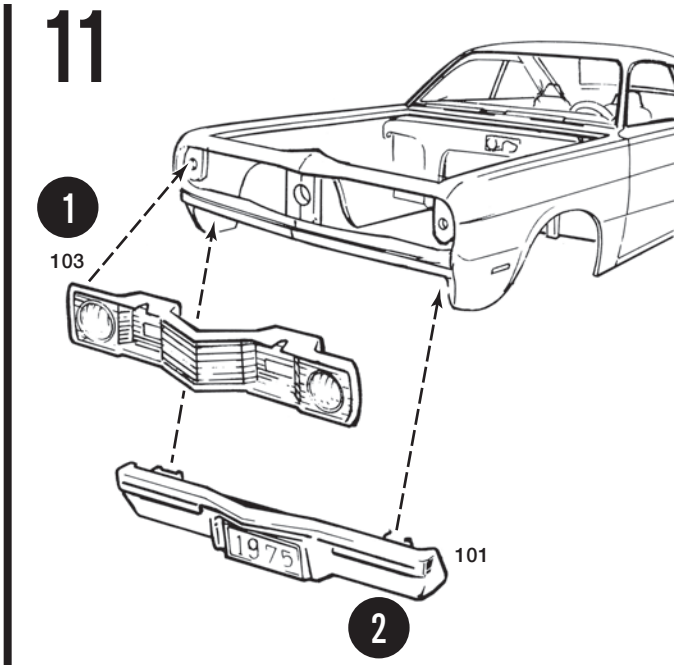
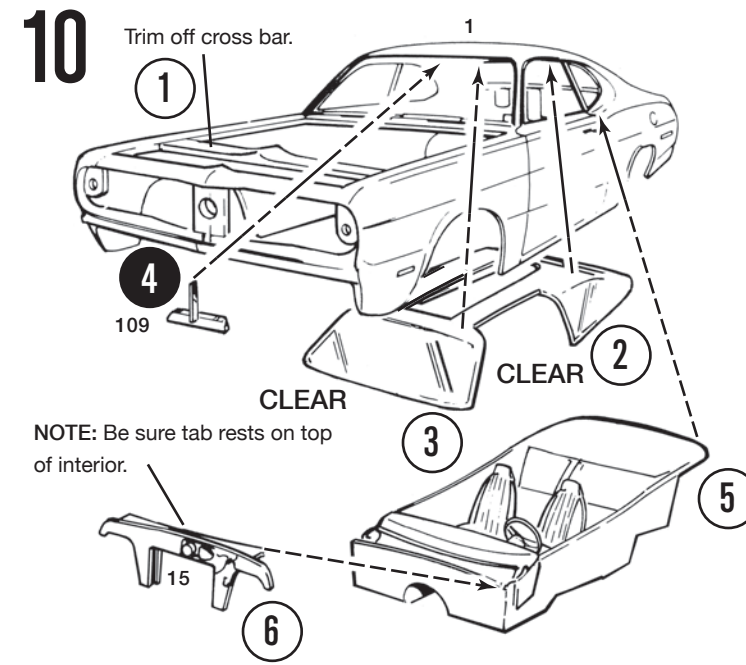
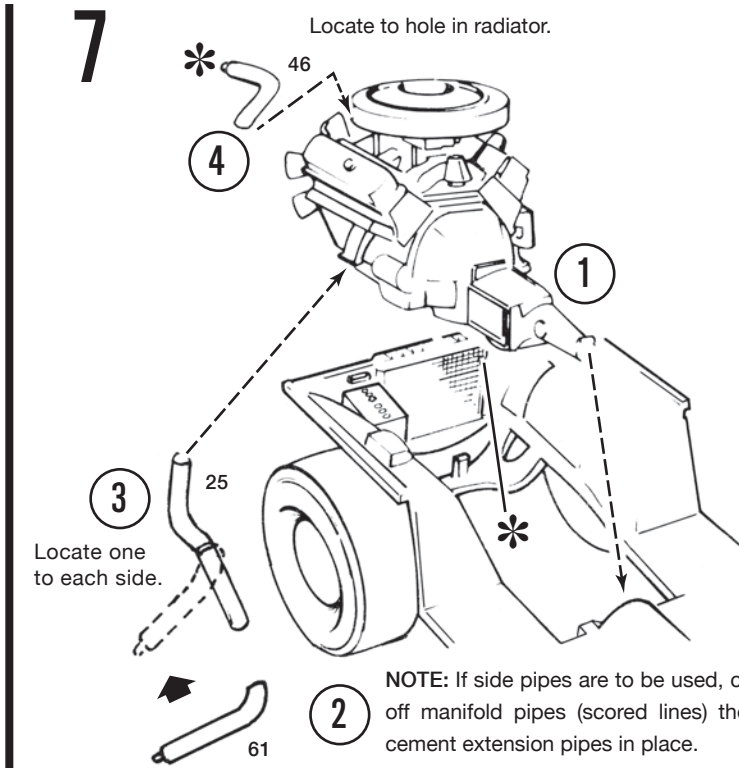
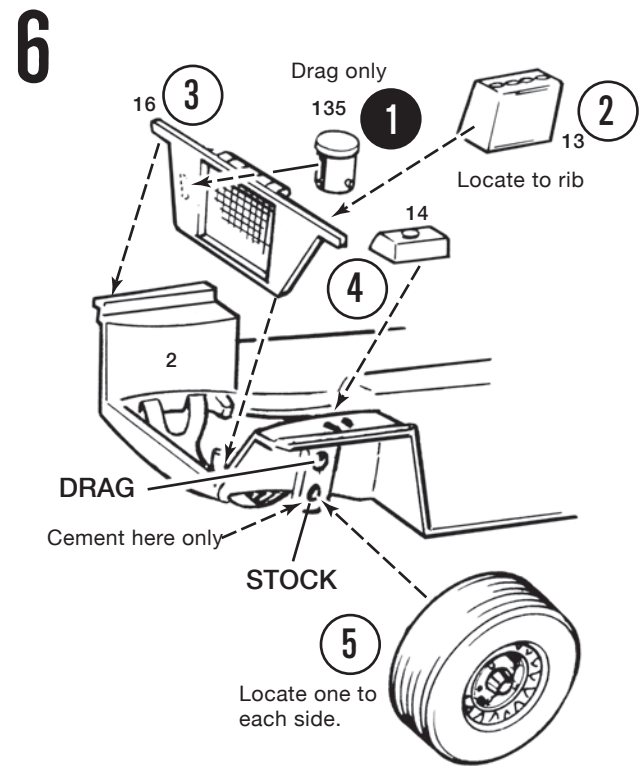
You should have no trouble assembling your kit if the instructions are followed properly.

**7** NON PLATED PARTS    **7** PLATED PARTS    7 PART NUMBERS    - - - - - CEMENT    - - - - - DO NOT CEMENT

Dodge and related logos, vehicle model names and trade dresses are trademarks of Chrysler Group LLC and used under license by Round2 LLC. © Chrysler Group LLC 2013. Other names and trademarks used under license to Round 2, LLC or by permission. MPC and ROUND 2 and design are trademarks of Round 2, LLC. ©2013 Round 2, LLC, South Bend, IN 46628 USA. Product and packaging designed in the USA. Made in China. All rights reserved.



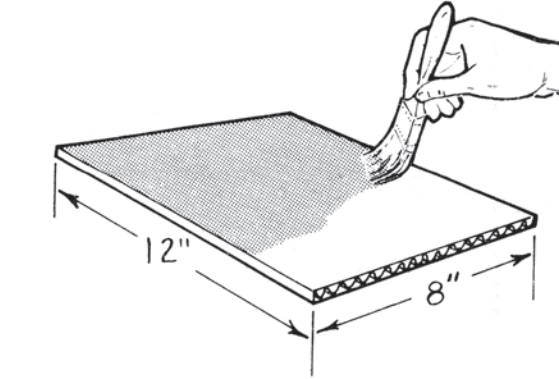




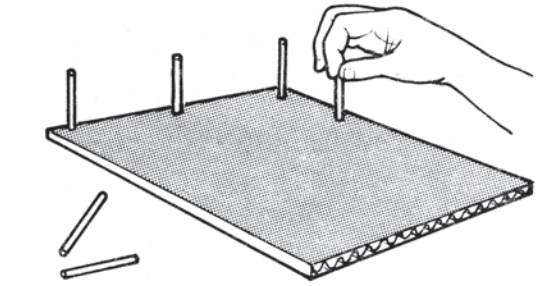
## DIORAMA

To complete your model and give it a place of honor on your shelf, we suggest building a diorama to display your creation. Following are a few suggestions for adding realism. The options are endless to personalize your model. Shown at the right are feet in 1/25 scale.

**A** For base, cut cardboard or wood to approximate size in illustration. Paint base the color you desire.



**B** For stanchions, trim runners off to size of 4 ft. (1/25 scale). Then, cement them into base as shown.



## D

**1** Wrap string (roping) around stanchions as shown. Place a small drop of cement on each stanchion to secure.

