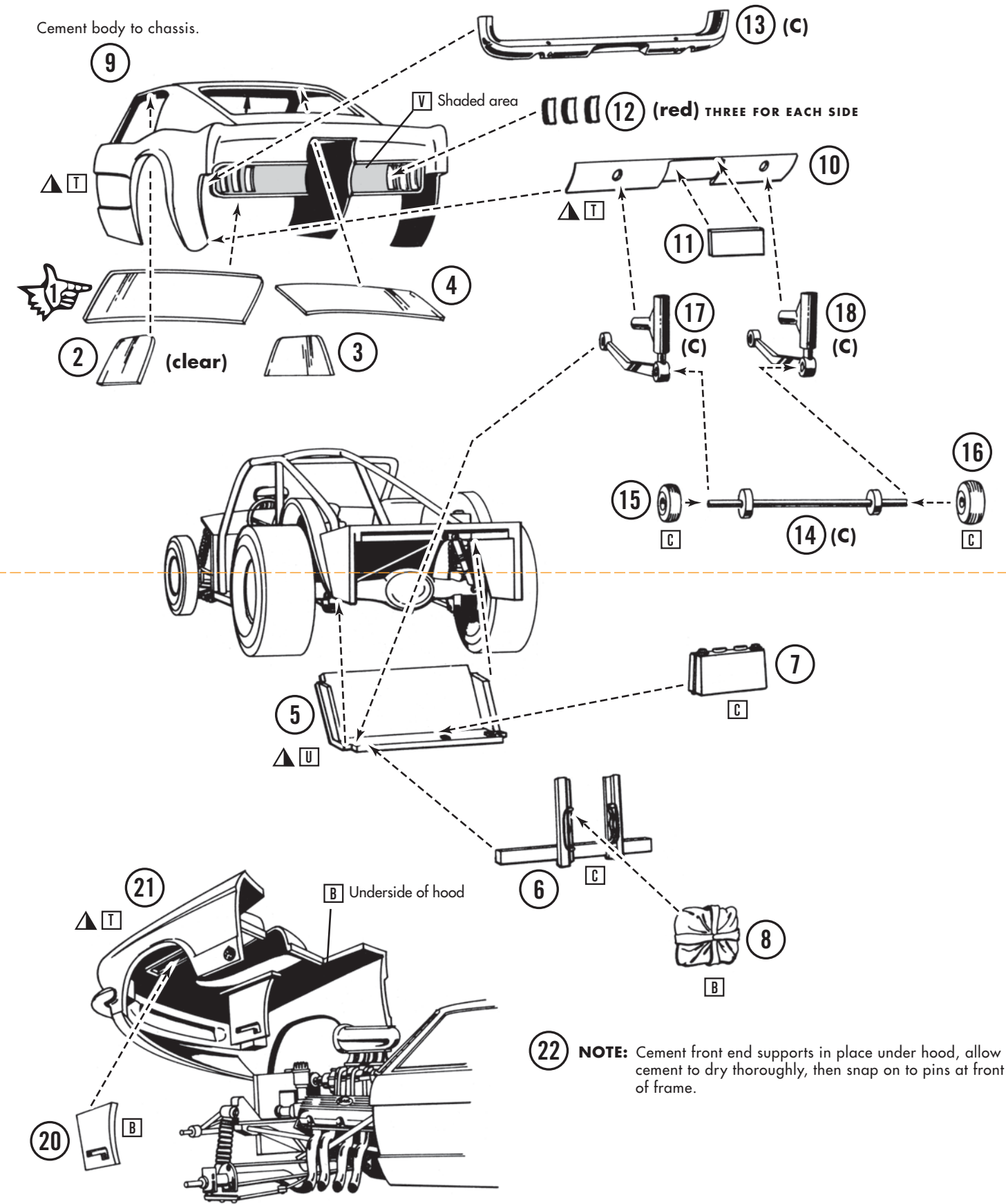


assembly 6.



THE MALCO GASSER

M800/804-200

PAINT COLORS

A	Black	Q	Yellow
B	Flat Black	R	Tan
C	Semi-Gloss Black	S	Brown
D	White	T	Lt. Blue
E	Flat White	U	Med. Blue
F	Silver	V	Dark Blue
G	Chrome (Bright Silver)	W	Transparent Blue
H	Aluminum	X	Lt. Green
I	Steel	Y	Dark Green
J	Brass	Z	Gray
K	Gold	AA	Purple
L	Amber	BB	Beige
M	Transparent Amber		Semi-Gloss
N	Red		Gloss
O	Transparent Red		Metallic
P	Orange		



**IMPORTANT! READ THIS FIRST** Before you begin building, look over the instructions carefully. Following the procedure given, test fit parts together without cementing. This way you will be more familiar with the location of parts when it becomes time to use cement.

For removing small parts from the "runners" it is best to use a modelers knife. Do not attempt to "twist" them off.

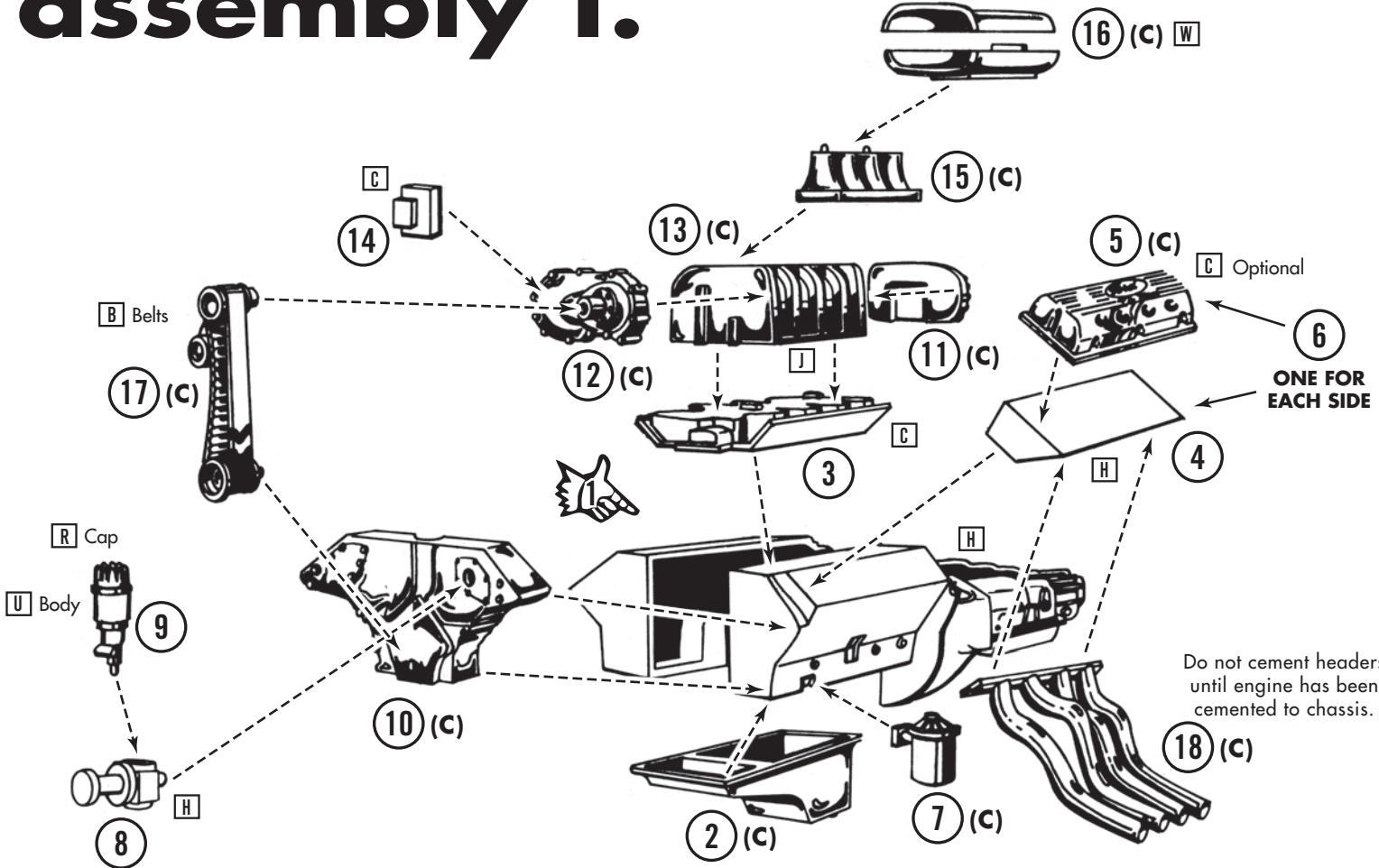
The highest quality styrene plastic goes into the making of each MPC model. Only paint and cement for styrene should be used. Before joining parts, trim off excess plastic or

"flash." Scrape plating from chrome parts where they are to be joined with other parts. Be careful not to get cement on exposed areas. To join parts use cement sparingly. Apply cement to small parts with a toothpick.

When painting your model it is best to cement all non-chrome accessories to the body and paint the whole unit at one time.

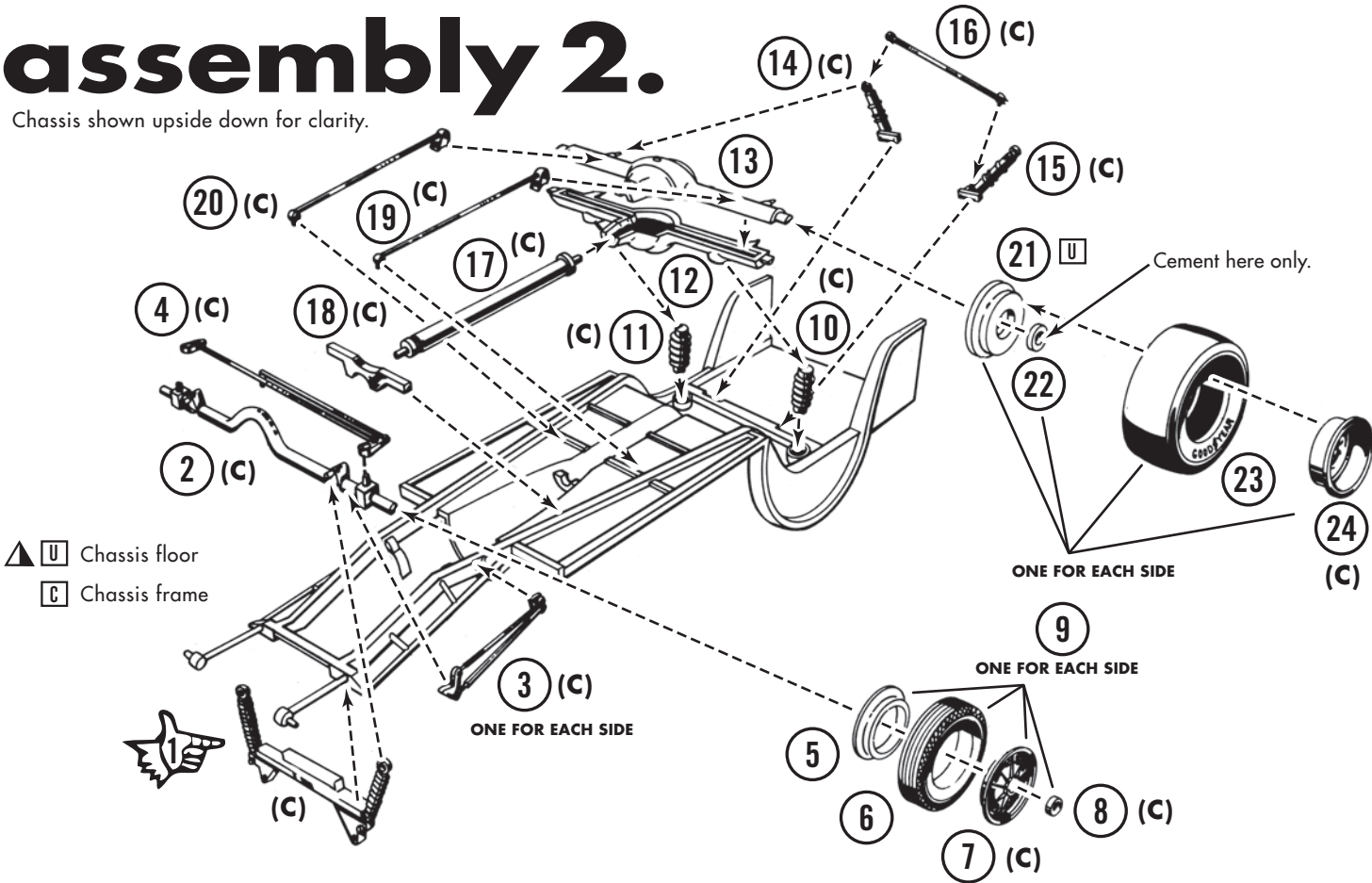
You should have no trouble assembling your kit if the instructions are followed properly. The parts are numbered in order of assembly. Chrome parts are indicated (C).

assembly 1.



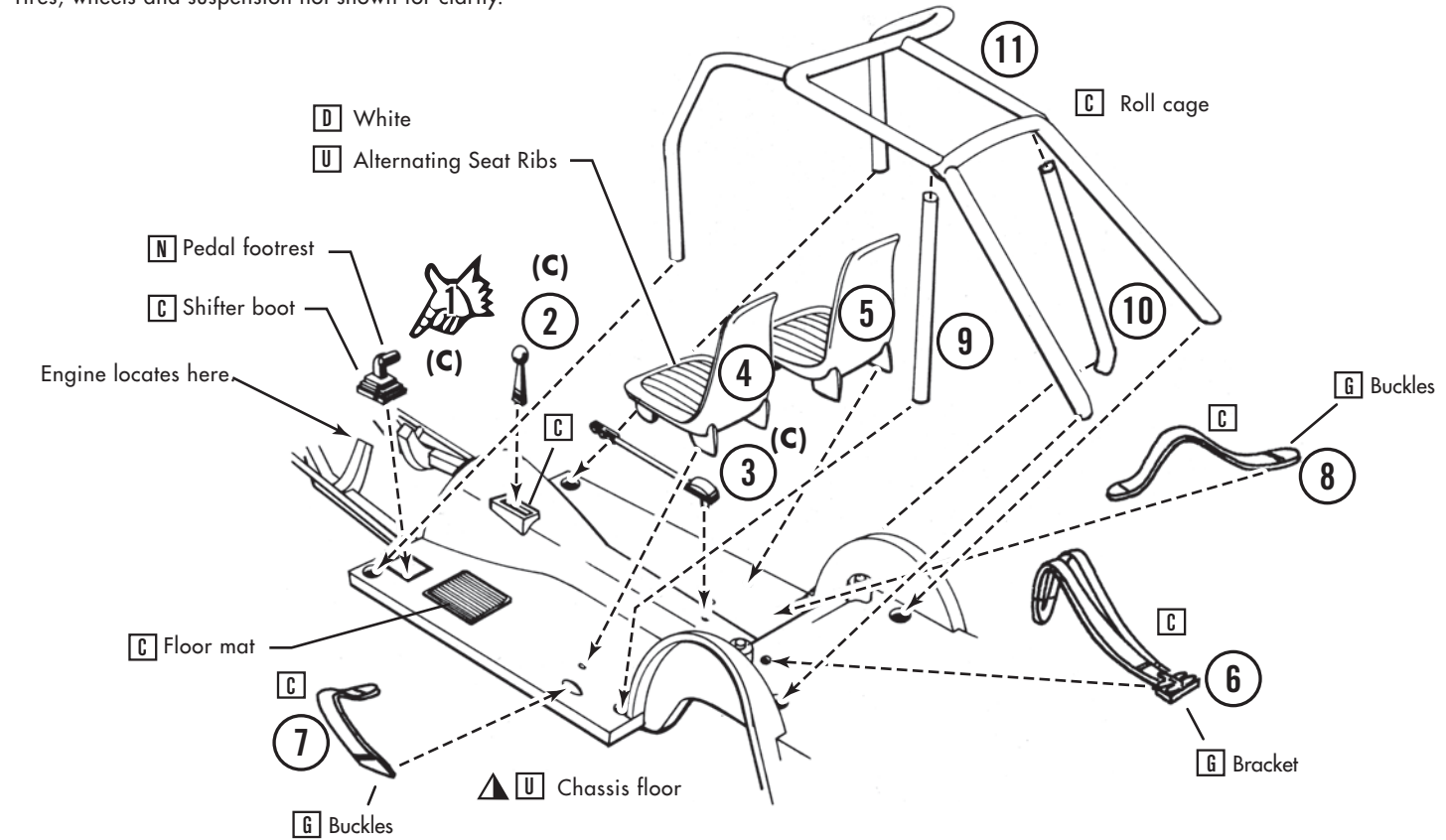
# assembly 2.

Chassis shown upside down for clarity.



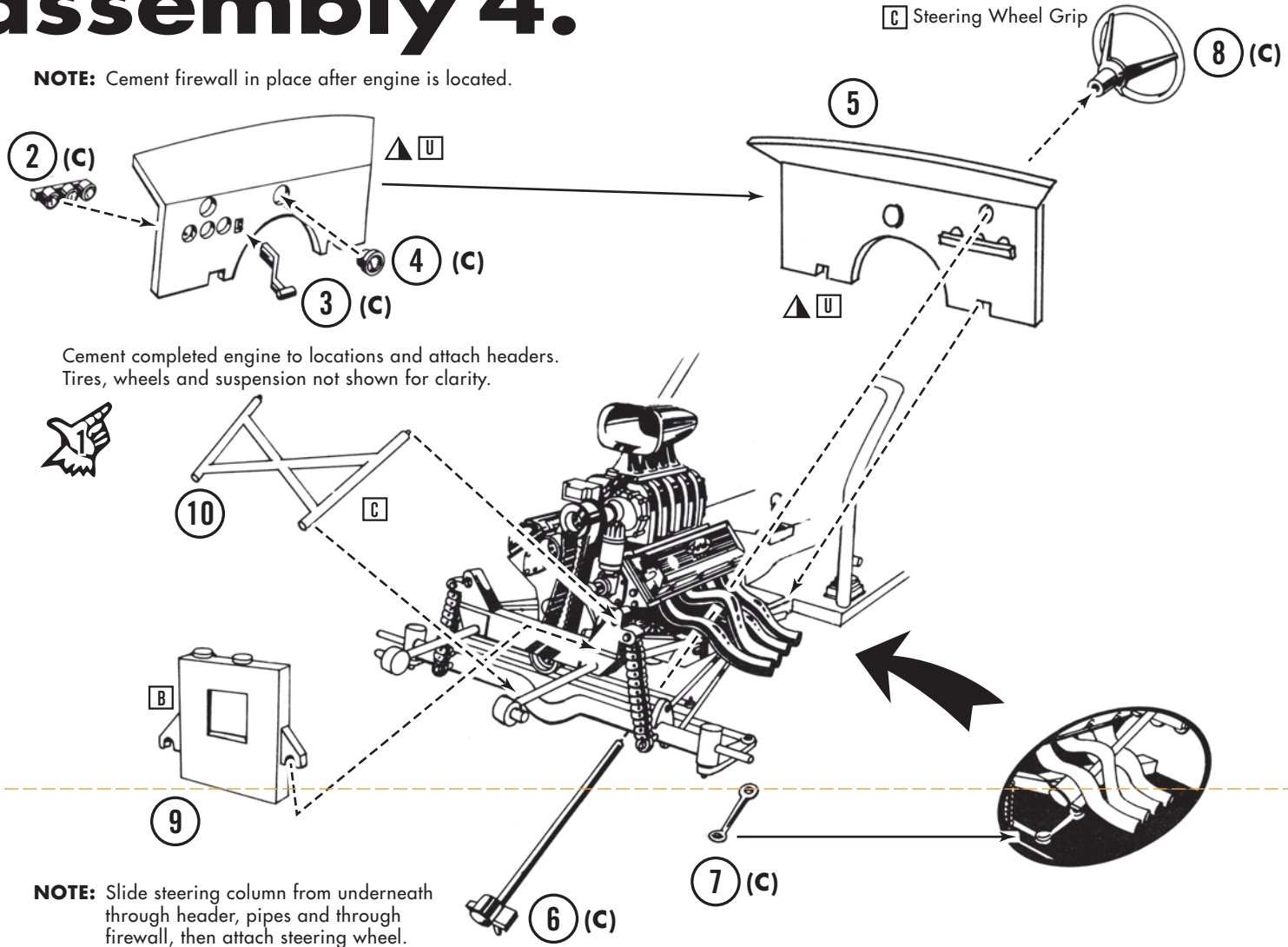
# assembly 3.

Tires, wheels and suspension not shown for clarity.



# assembly 4.

NOTE: Cement firewall in place after engine is located.



# assembly 5.

