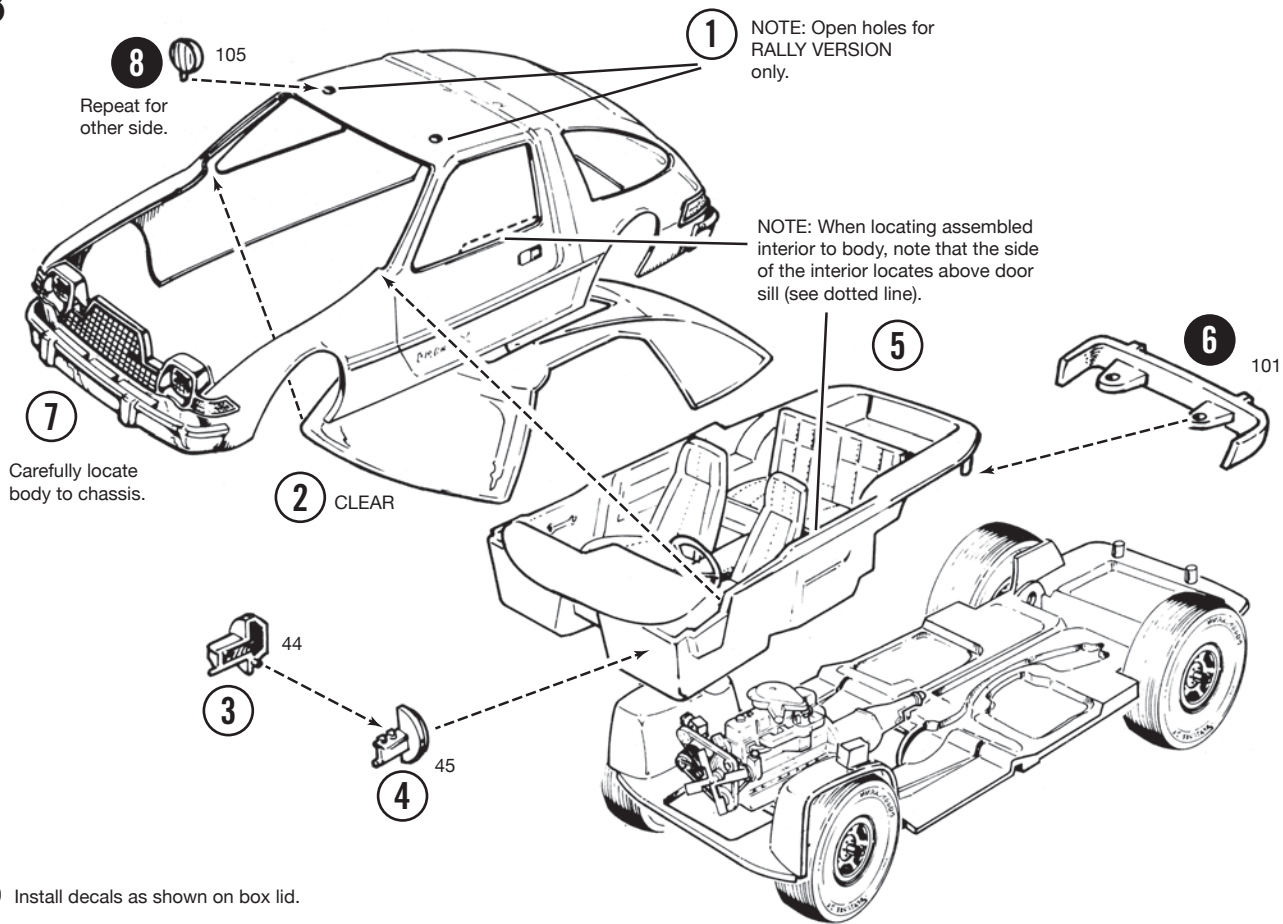
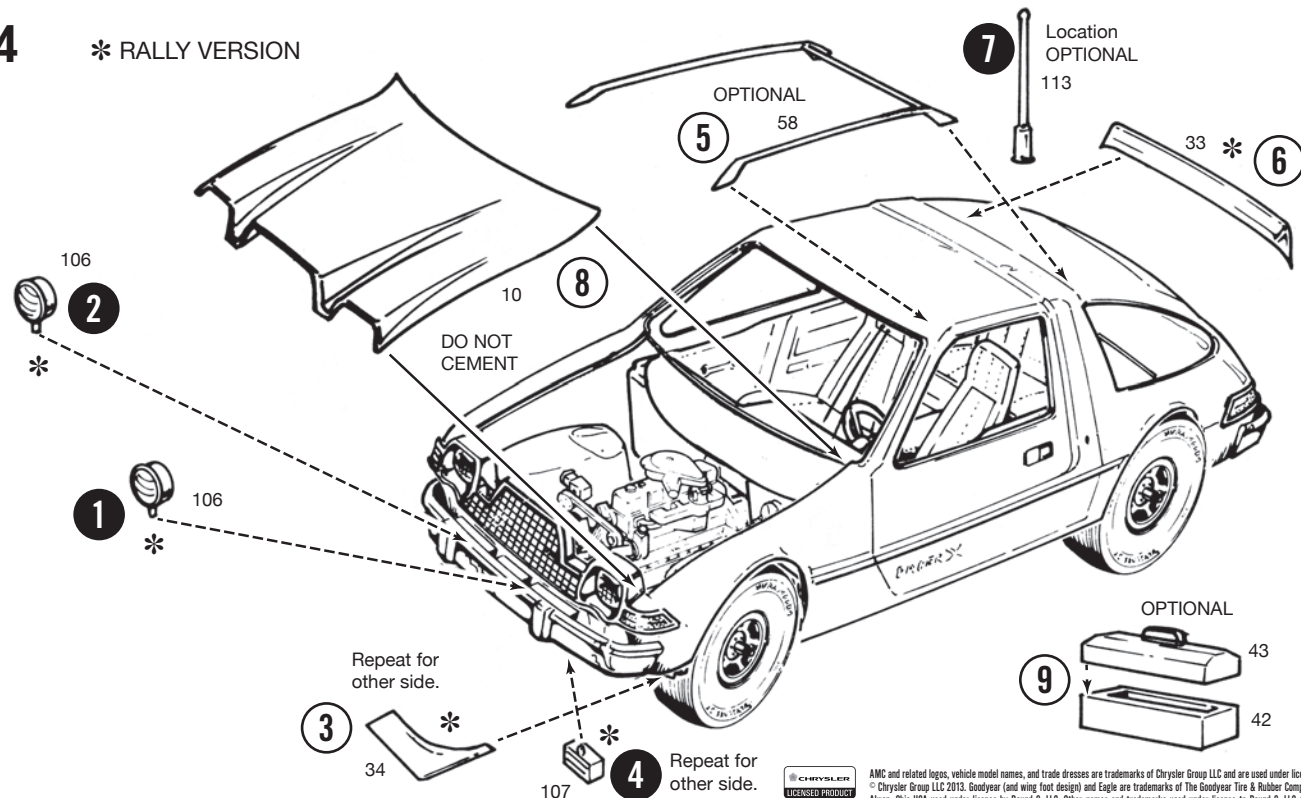


13



9 Install decals as shown on box lid.

14 * RALLY VERSION



 AMC and related logos, vehicle model names, and trade dresses are trademarks of Chrysler Group LLC and are used under license. © Chrysler Group LLC 2013. Goodyear (and wing foot design) and Eagle are trademarks of The Goodyear Tire & Rubber Company. Akron, Ohio USA used under license by Round 2, LLC. Other names and trademarks used under license to Round 2, LLC or by permission. MPC and ROUND 2 and design are trademarks of Round 2, LLC. ©2013 Round 2, LLC, South Bend, IN 46626 USA. Product and nomenclature designed in the USA. Made in China. All rights reserved.



PAGER X

IMPORTANT! Read this first before assembly.

You may build this kit more than one day. Before you begin building, look over the instructions carefully. Following the procedure given, test-fit parts together without cementing, after you have decided what version to build. This way you will be more familiar with the location of parts when it becomes time to use cement.

For removing small parts from the “runners” it is best to use a modeler’s knife. Do not attempt to ‘twist’ them off.

The highest quality styrene plastic goes into the making of each MPC model. Only paint and cement made for styrene should be used. Before

ASSEMBLY GUIDE

Part numbers as engraved
on runner or parts.

140



Step by step assembly order.

①

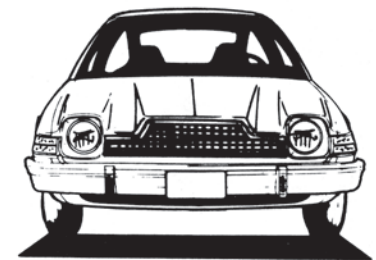
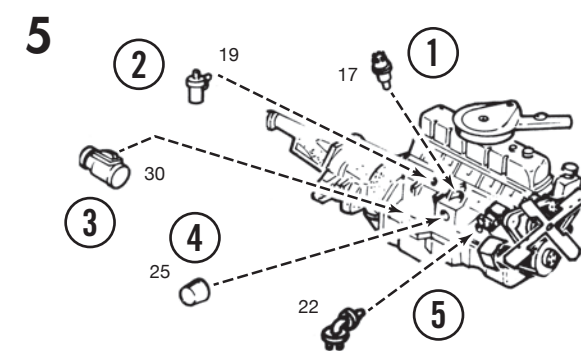
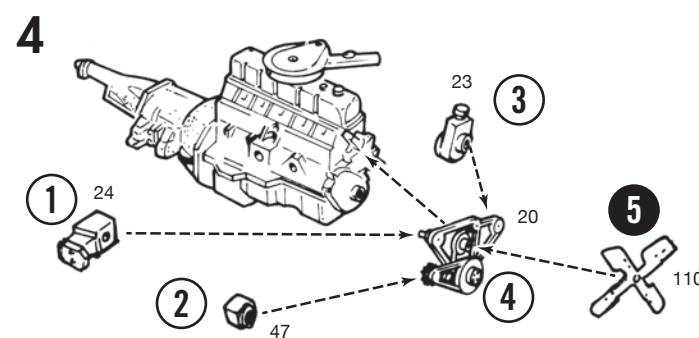
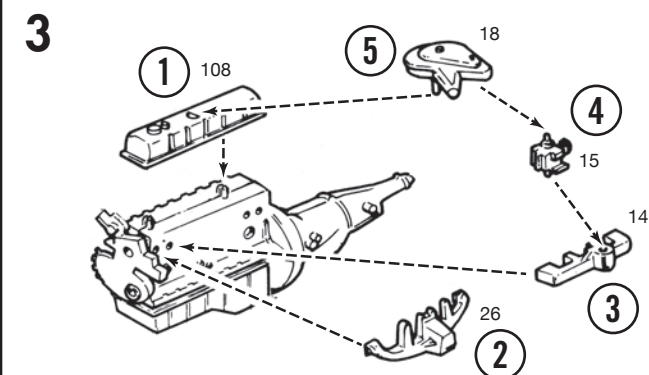
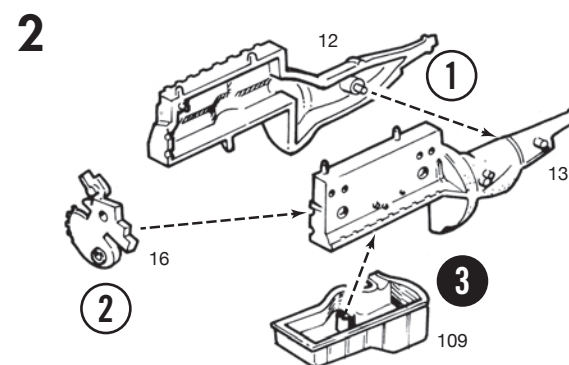
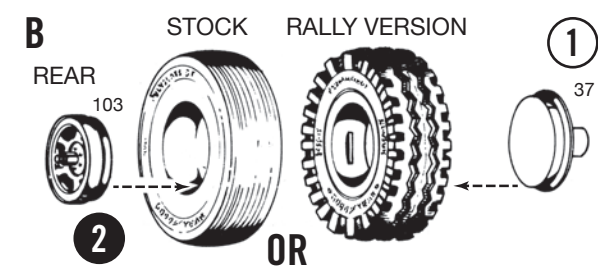
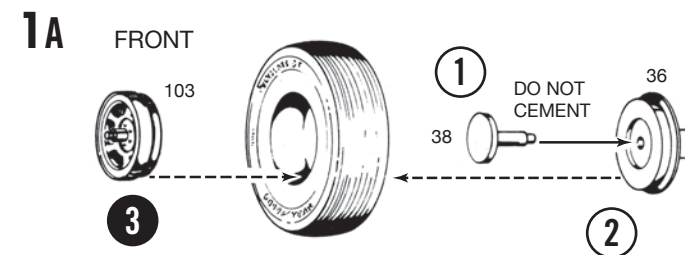
IN PLATED
RTS

2 PLATED PARTS

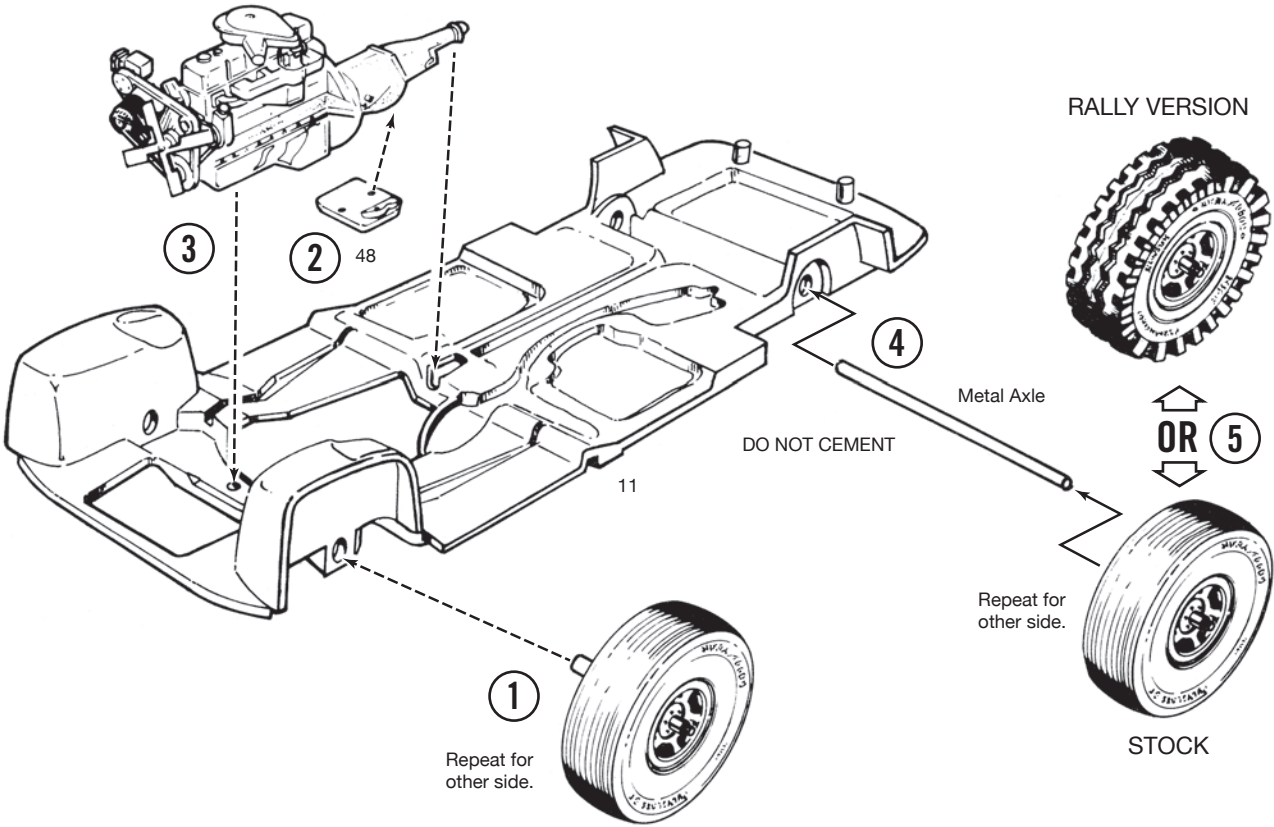
Gluing instructions.

CEMEN

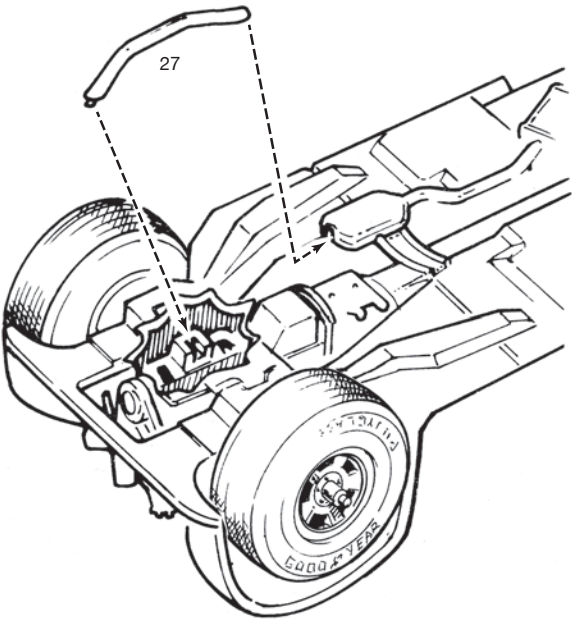
CEMENT



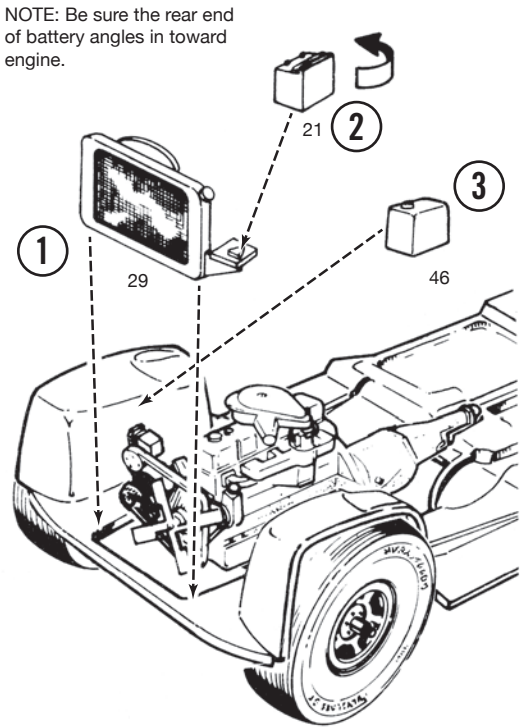
6



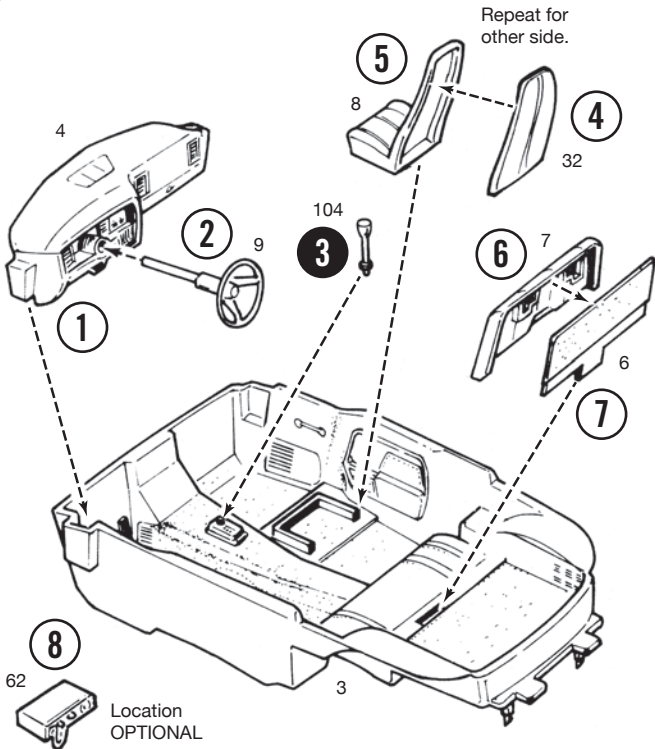
9



10



7



8

