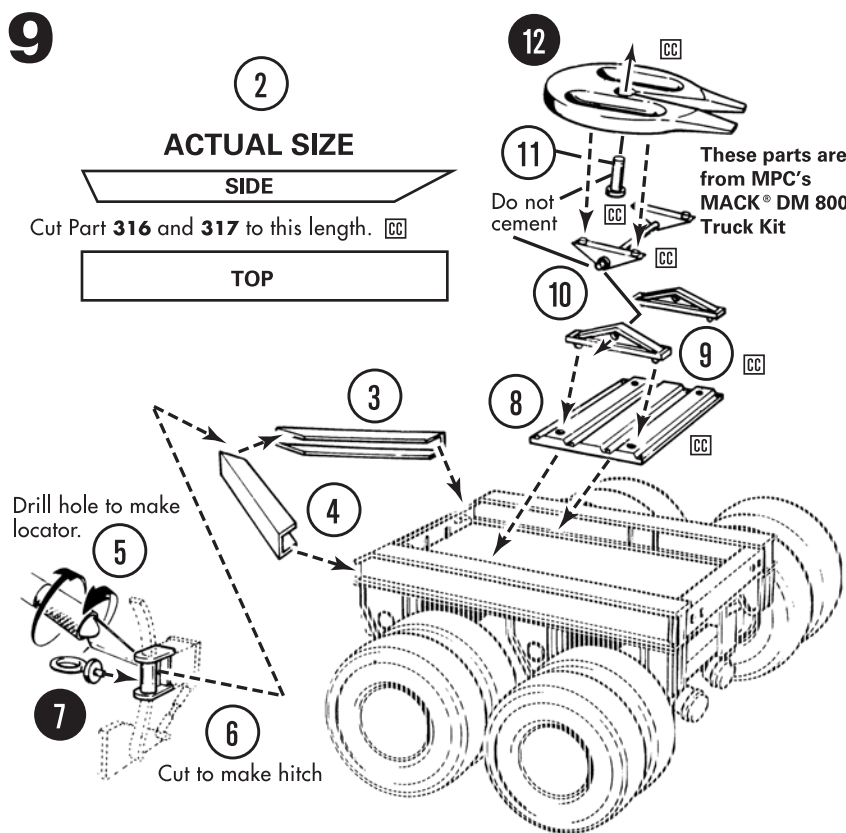
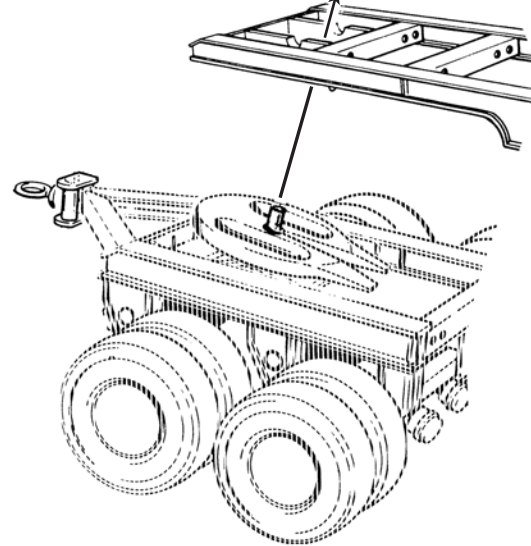


9

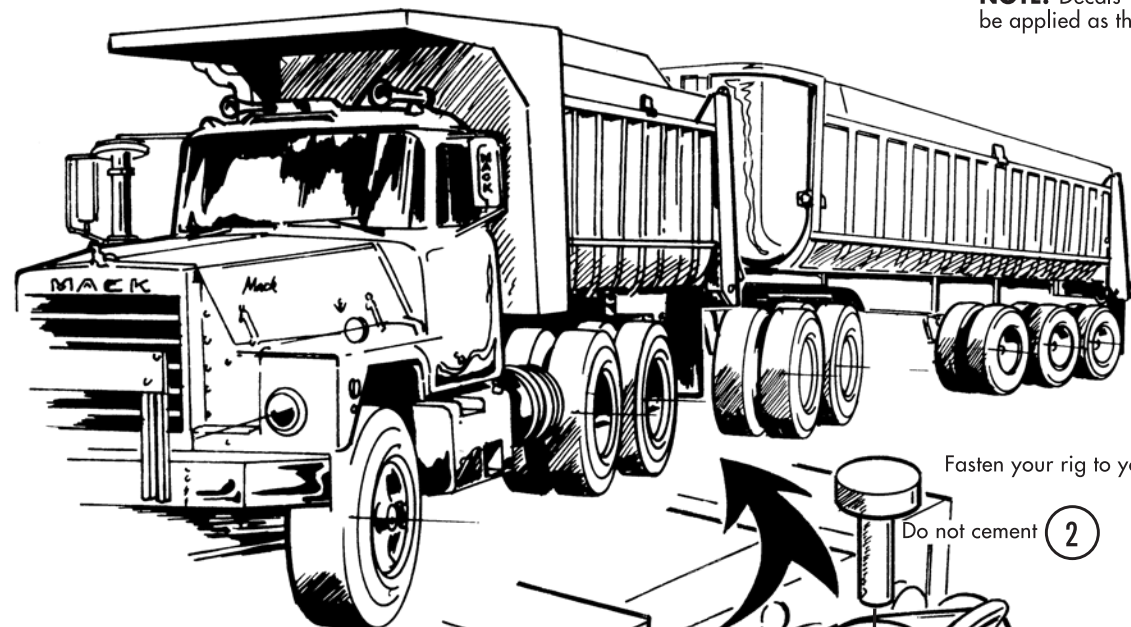


10

If you wish to attach "dolly" to the long dump permanently, use extra pin, Part (355). Pass pin through "Fifth Wheel" from the bottom as shown. Place "Long Dump" to "Dolly" and with a heated screwdriver or modeler's knife, heat seal (Mushroom) the pin so it holds tight but will still move.



11



NOTE: Decals included with this kit may be applied as the builder sees fit.

GOODYEAR
OFFICIAL TIRE SUPPLIER

MACK and the IM design are registered trademarks of Mack Trucks, Inc. and used under license by Round 2, LLC. All Rights Reserved. Goodyear (and wing foot design) and Eagle are trademarks of The Goodyear Tire & Rubber Company, Akron, Ohio USA used under license by Round 2, LLC. MPC and design and ROUND 2 and design are trademarks of Round 2, LLC. ©2015 Round 2, LLC, South Bend, IN 46628 USA. Product and packaging designed in the USA. Made in China. All rights reserved.

round2models.com



Round 2, LLC
4073 Meghan Beeler Court
South Bend, IN 46628

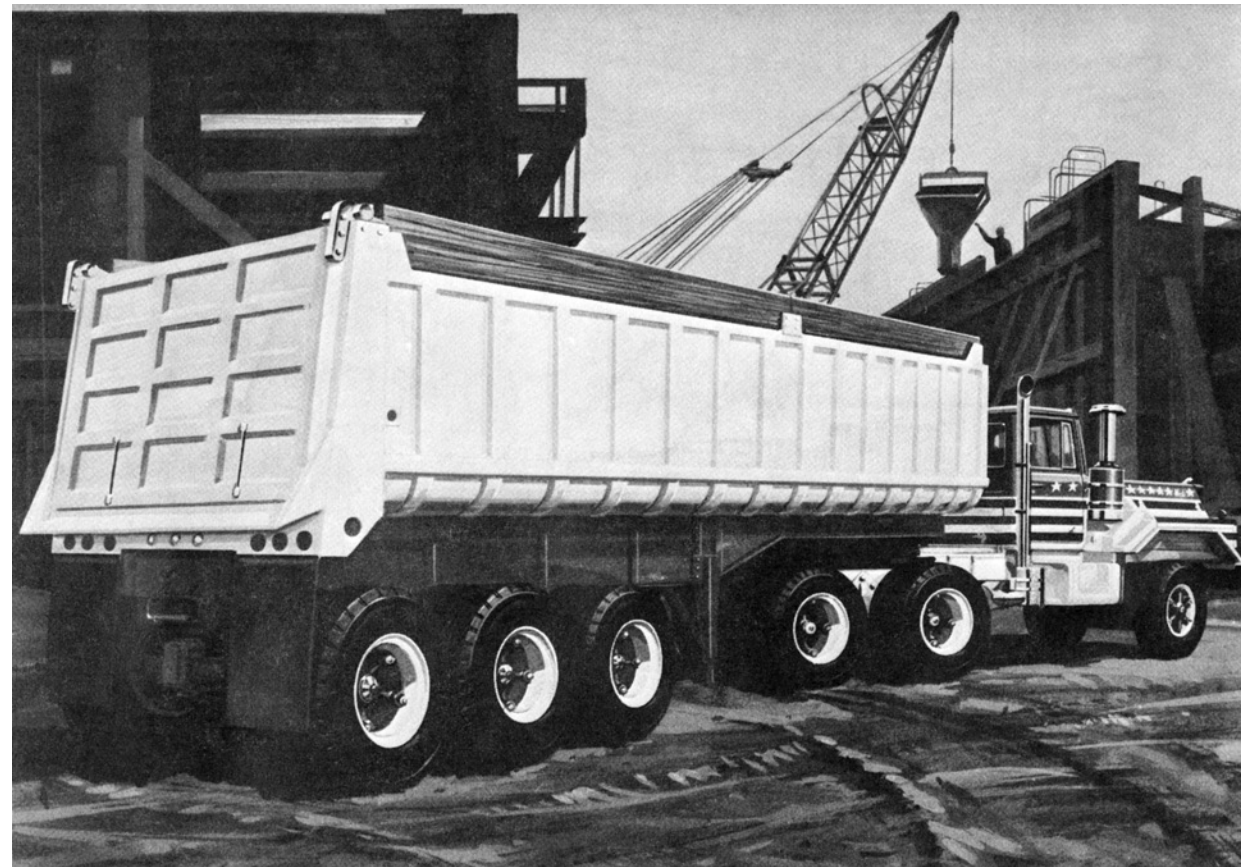


International Hobbycraft (UK) Ltd.
21 St. Thomas Street
Bristol BS1 6JS England

SEVEN

GRAVEL TRAILER

DUMP BOX DOUBLE DUMP TRAIN



PART NO.1

SPECIAL INSTRUCTIONS FOR YOUR GRAVEL TRAILER.

This kit was originally designed to be built as a dump trailer or as a dump box for the MPC® Mack® DM 800. See "PART NO.2" for details. Included also within these instructions you will find plans on building a dolly for use with a full double-tandem dump train.

IMPORTANT

Please read this first.

Before you begin building any part of this kit, you should read the following:

The first section of these instructions has been dedicated to building the trailer dump. You should know that if you decide to build the trailer, you should disregard the last portion of the instructions. Build the trailer using the procedure given. Paint components as you build. Let all paint dry completely prior to handling.

The second section of the instructions cover the construction of the dump box for the MACK® tractor and the dolly. It is suggested that only experienced model builders attempt to build this "rig". Two gravel trailer kits are required to build the complete rig. One kit will build the "Long Dump" trailer, the other kit will furnish the material to build the dolly and "Dump Box".

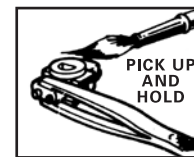
You should be advised that other accessories such as Safety Chain" and additional Wiring" are available at your local hobby stores.

Use only paints and cement designed for styrene plastic. Other types will damage your kit. For best results, we suggest liquid styrene cement be used for all assemblies.

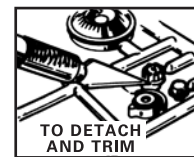
All the molded parts have part numbers either on them or on the runners next to the part. Do not remove any part until you are ready to use it. The numbers within the circle are assembly numbers. Follow these numbers in order for proper building procedure. Some duplicated parts have not been illustrated for clarity, in these cases a note or call out "Each side" or "Repeat" replaces it.

GET YOUR TOOLS READY

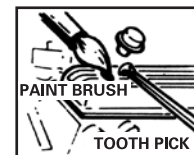
TWEEZERS



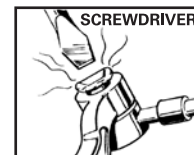
KNIFE



CEMENT



HEAT SEALING



27

PLATED PARTS

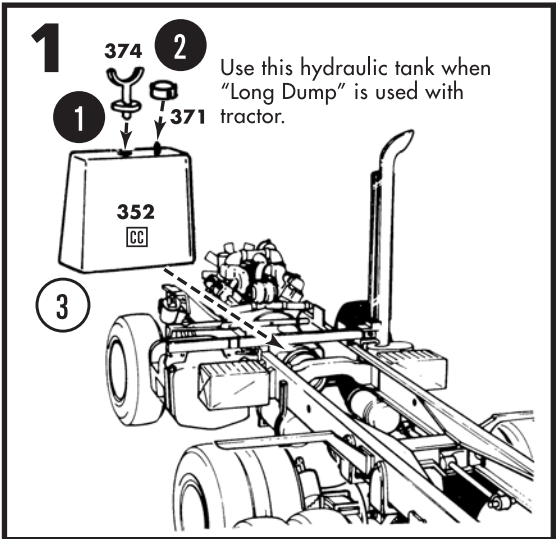
19

NON PLATED PARTS

201

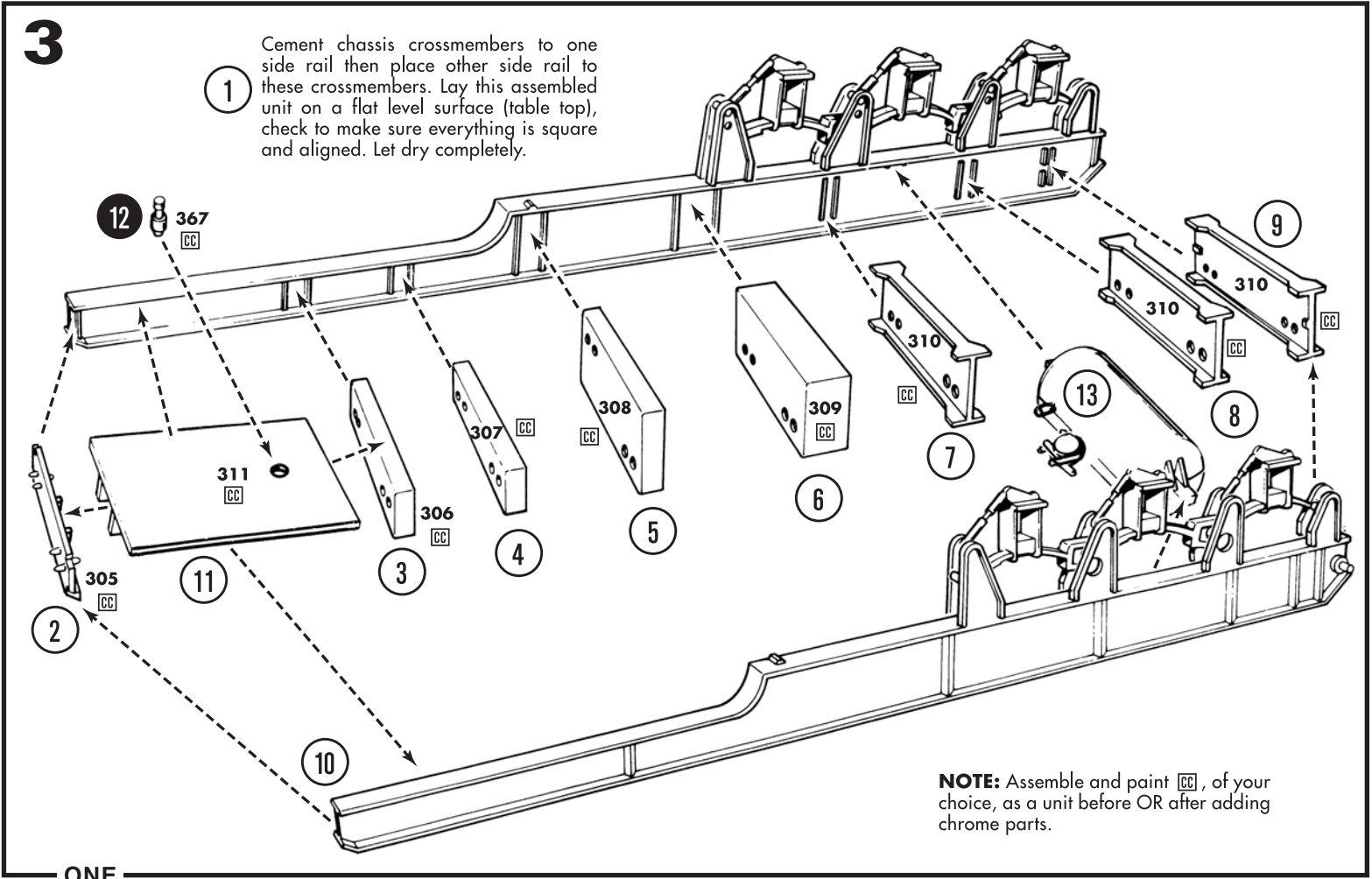
PART NUMBERS



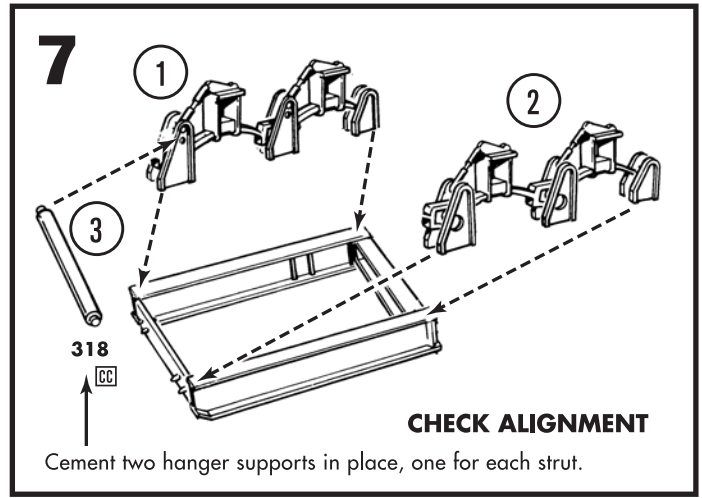
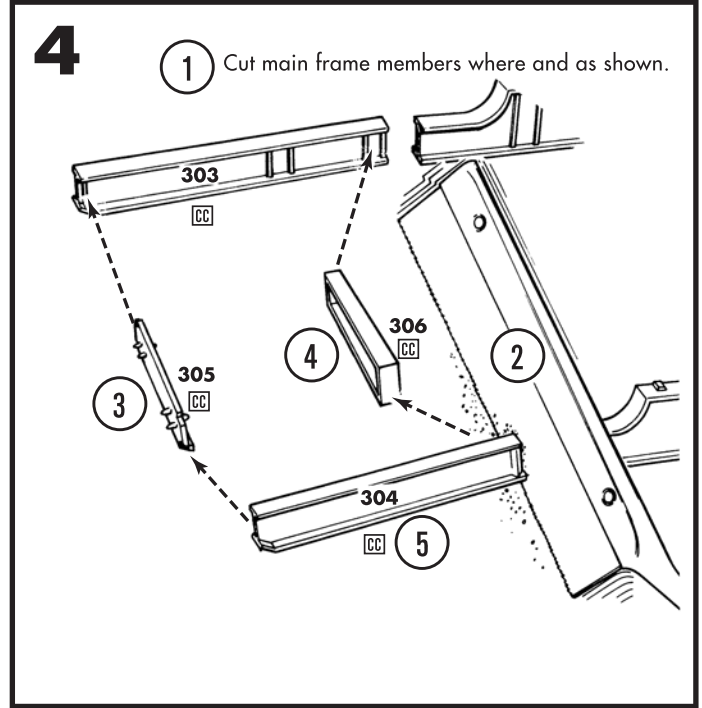
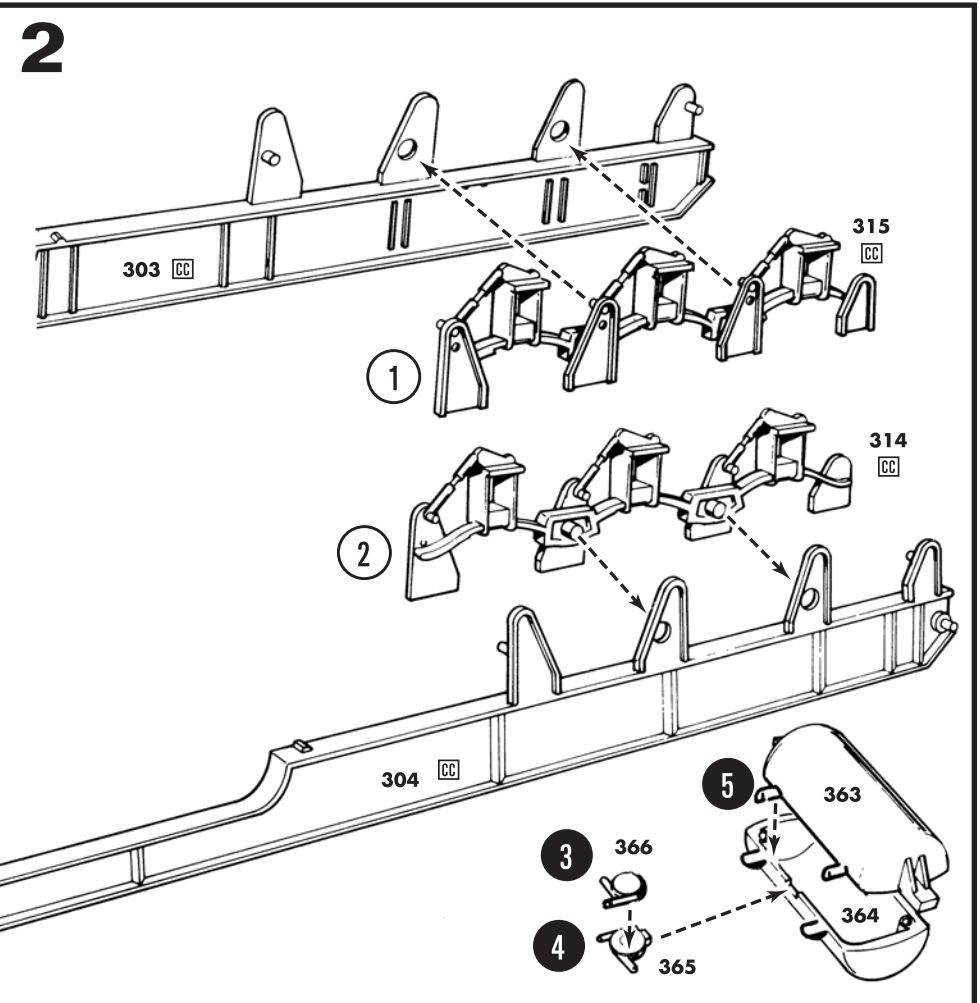


PAINT COLORS

[A] Black	[L] Amber	[W] Transparent Blue
[B] Flat Black	[M] Transparent Amber	[X] Lt. (Mint) Green
[C] Semi-Gloss Black	[N] Red	[Y] Dark Green
[D] White	[O] Transparent Red	[Z] Gray
[E] Flat White	[P] Orange	[FC] Fender Color
[F] Silver	[Q] Yellow	[CC] Chassis Color
[G] Chrome (Bright Silver)	[R] Tan	[TC] Truck Cab Color
[H] Aluminum	[S] Brown	▲ Semi-Gloss
[I] Steel	[T] Lt. Blue	▲ Gloss
[J] Brass	[U] Med. Blue	▲ Metallic
[K] Gold	[V] Dark Blue	



NOTE: Assemble and paint [CC], of your choice, as a unit before OR after adding chrome parts.



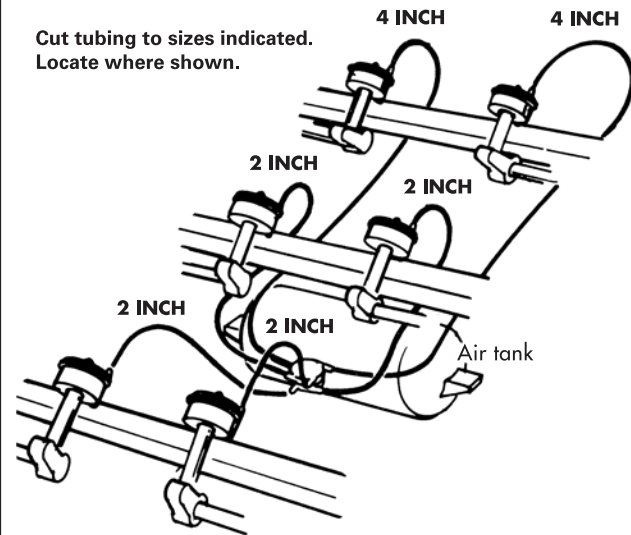
1

BRAKE LINES

Assemble brake unit using this detailed drawing as a guide. Unit shown completed.

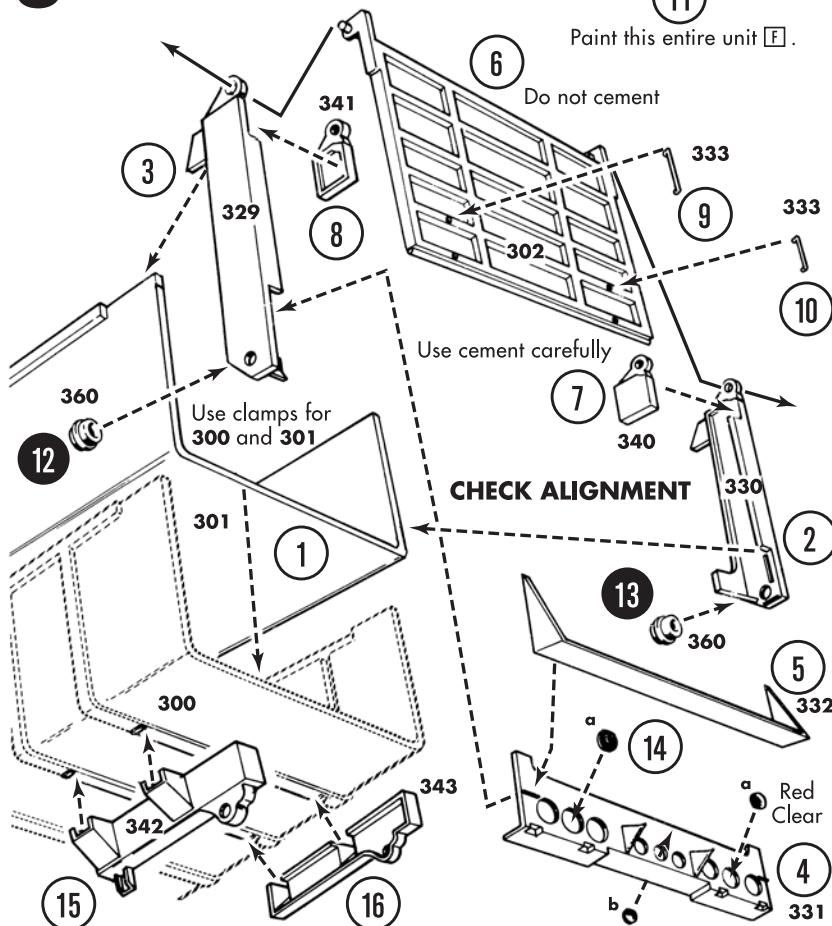
Install lines as shown.

Cut tubing to sizes indicated. Locate where shown.



Attach air lines to chrome valve; attach other end to brake cylinder.

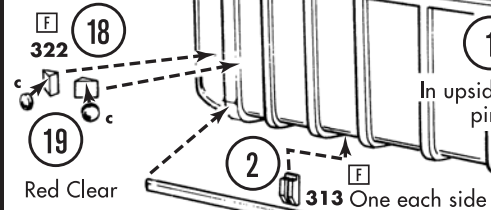
8

CHECK MOVEMENT

9

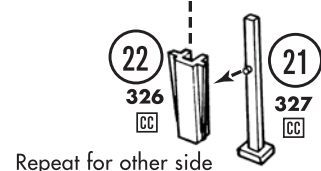
When dump box is raised, locate (do not cement) front end of hydraulic lift here from beneath.

Two each side.

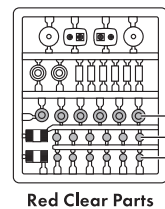


When dump box is raised, locate (do not cement) rear end of hydraulic lift here.

NOTE: If trailer is to be displayed off the tractor, assemble the support struts in the bottom locator. If it is to be hooked up, assemble in the top locator.



Red Clear One each side

CHECK MOVEMENT**CHECK MOVEMENT**

Repeat for other side

Do not cement

Do not cement

Do not cement

Do not cement

Do not cement

Do not cement

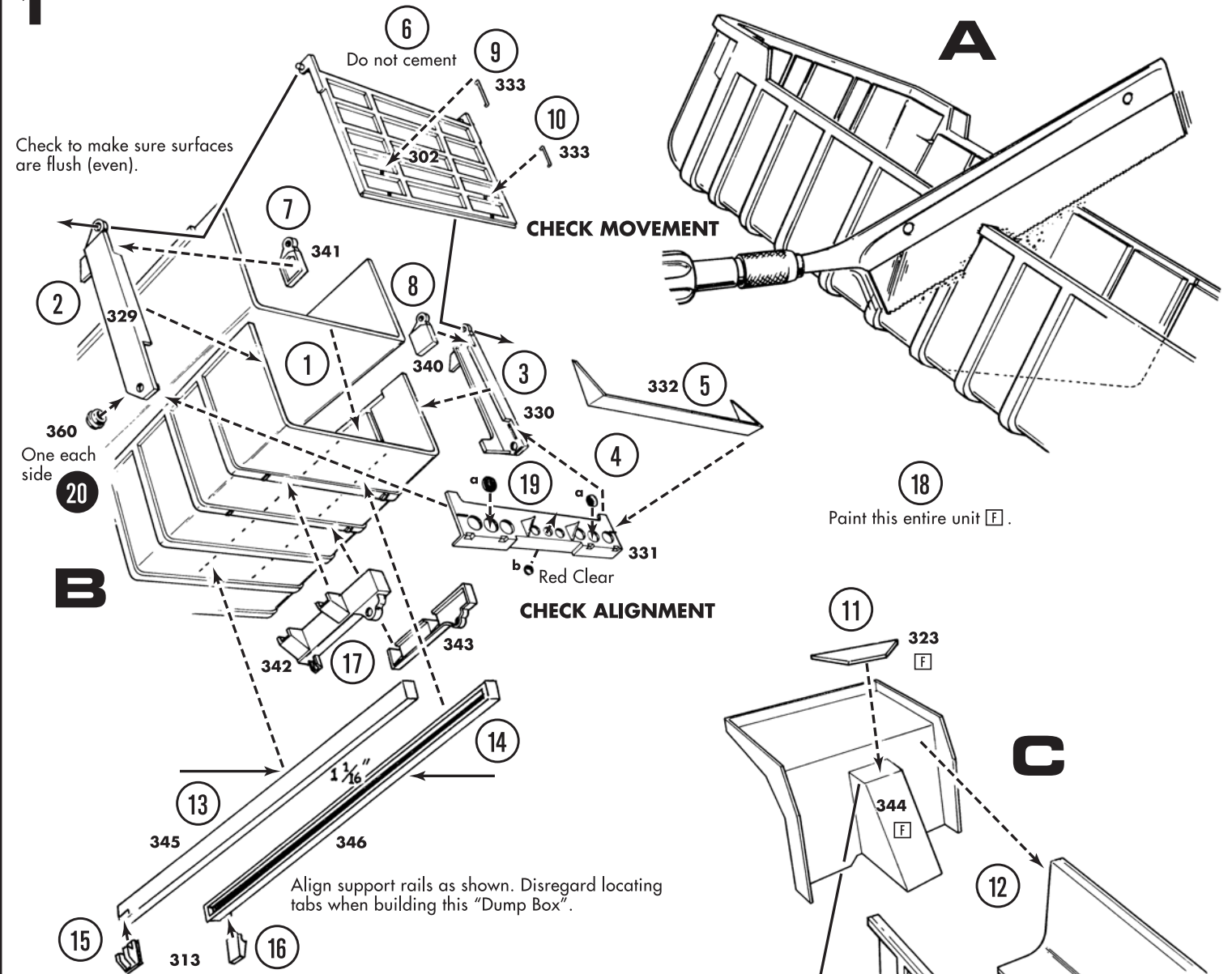
THIS SECTION OF THE INSTRUCTIONS IS PRESENTED FOR NOSTALGIA ONLY.

(Visit round2models.com for currently available tractor kits that may possibly be used with the "Dump Box".)

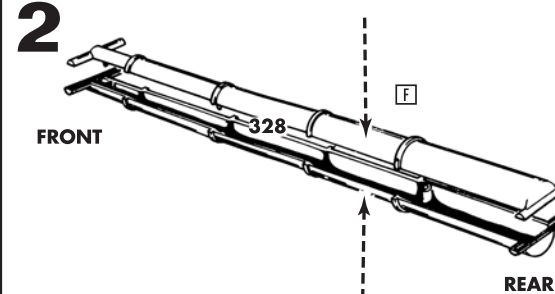
PART NO. 2**Please Read**

If you wish to build the "Dump Box" for your MACK® Tractor, the following will help you do a professional job. You will have to cut the "Long Dump" to size. It is best to use a modeler's "Razor Saw" and cut only where indicated by scribed lines. You have to cut both the inner and outer members of the box. Saw in two as shown in illustration. Follow basic building instructions.

1



2

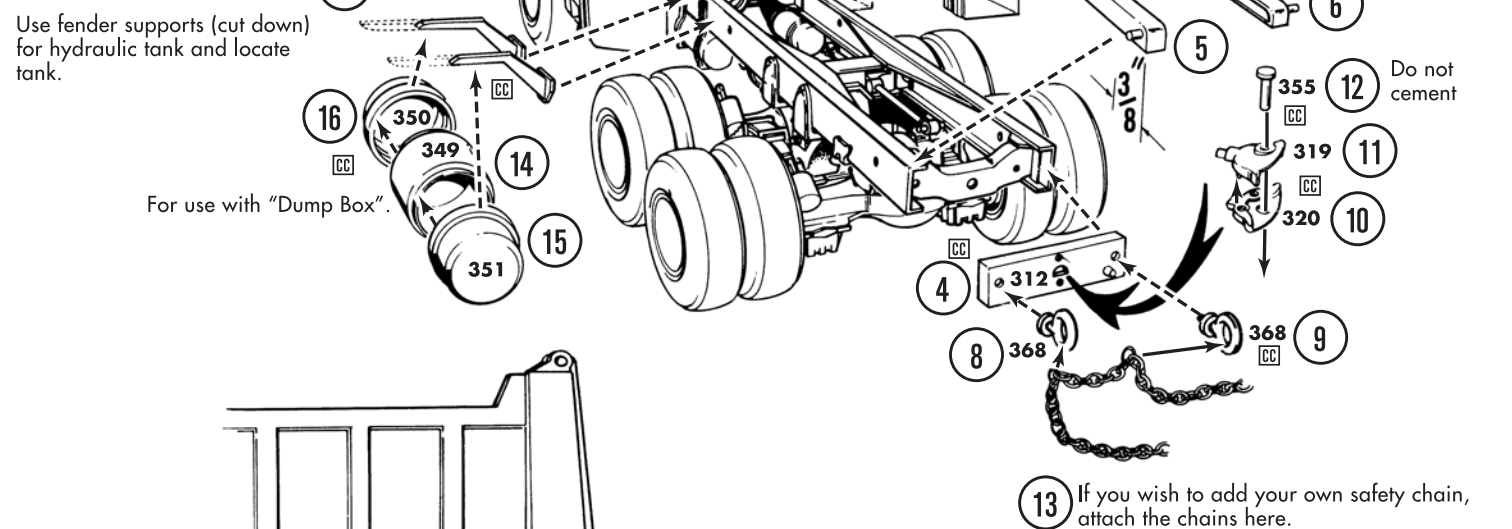
HYDRAULIC LIFT

When dump box is raised, locate (do not cement) front end of hydraulic lift here from beneath.

TRUCK CAB OMITTED FOR CLARITY

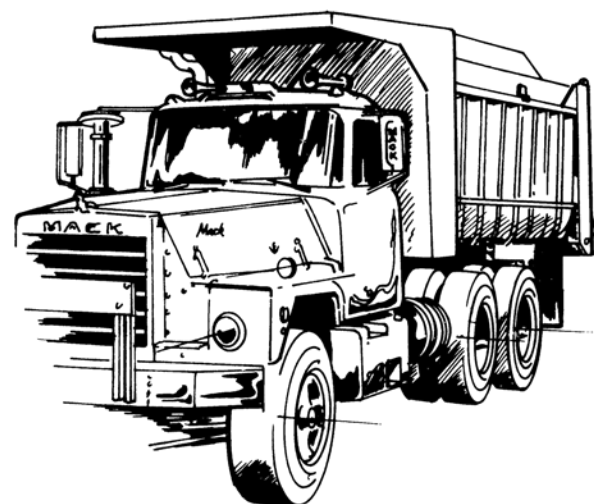
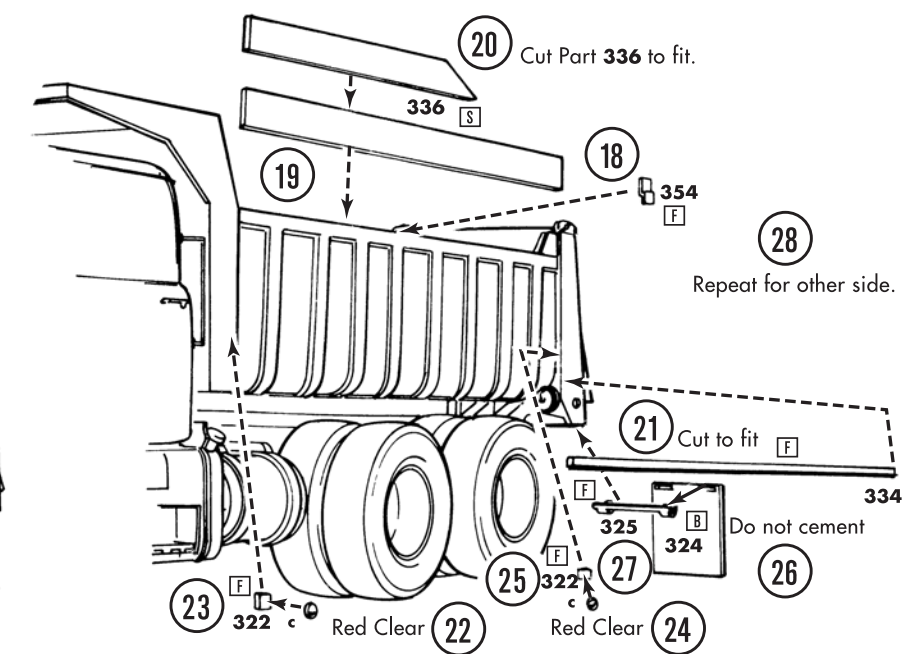
Use fender supports (cut down) for hydraulic tank and locate tank.

For use with "Dump Box".



CHECK MOVEMENT

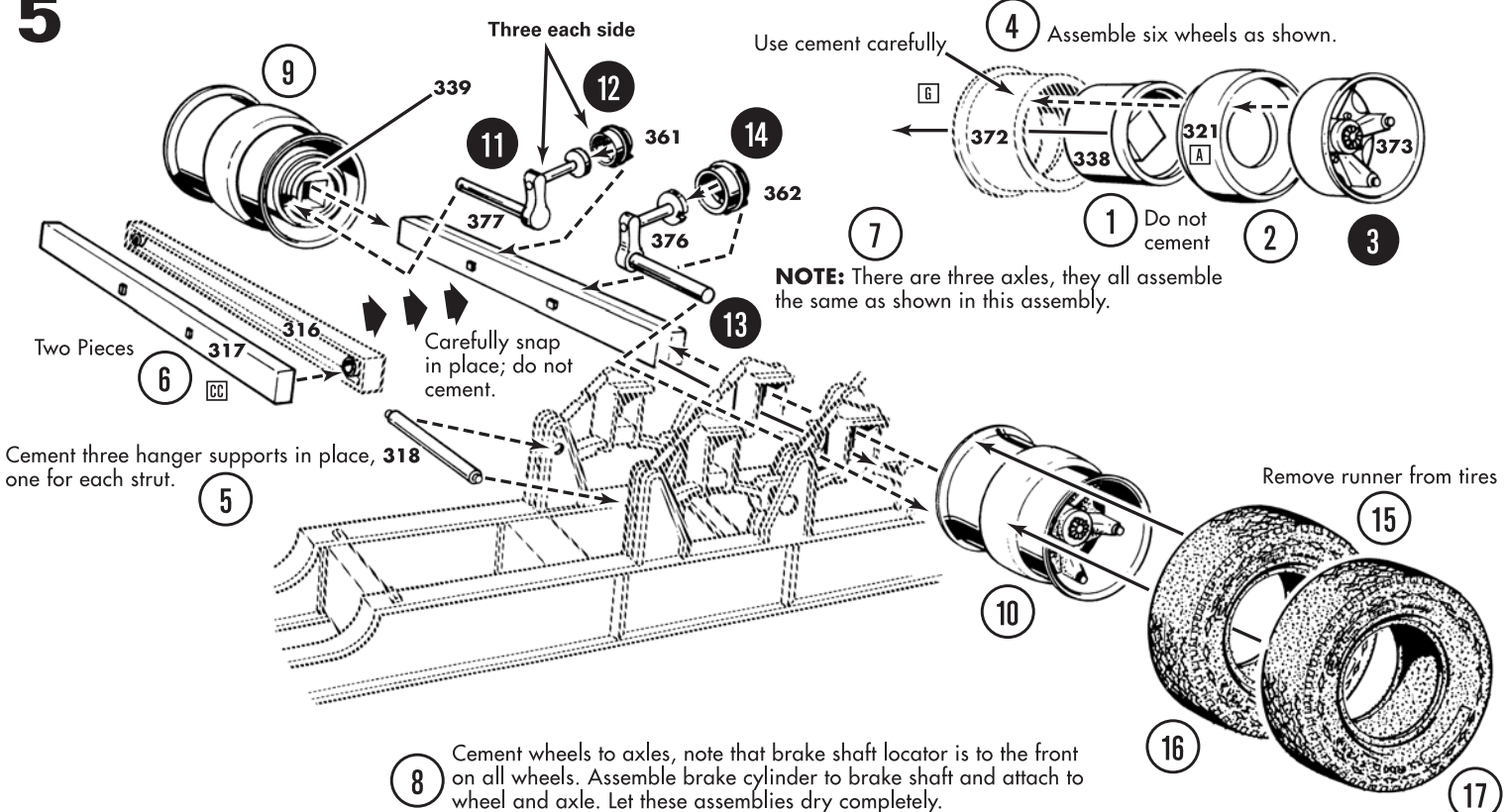
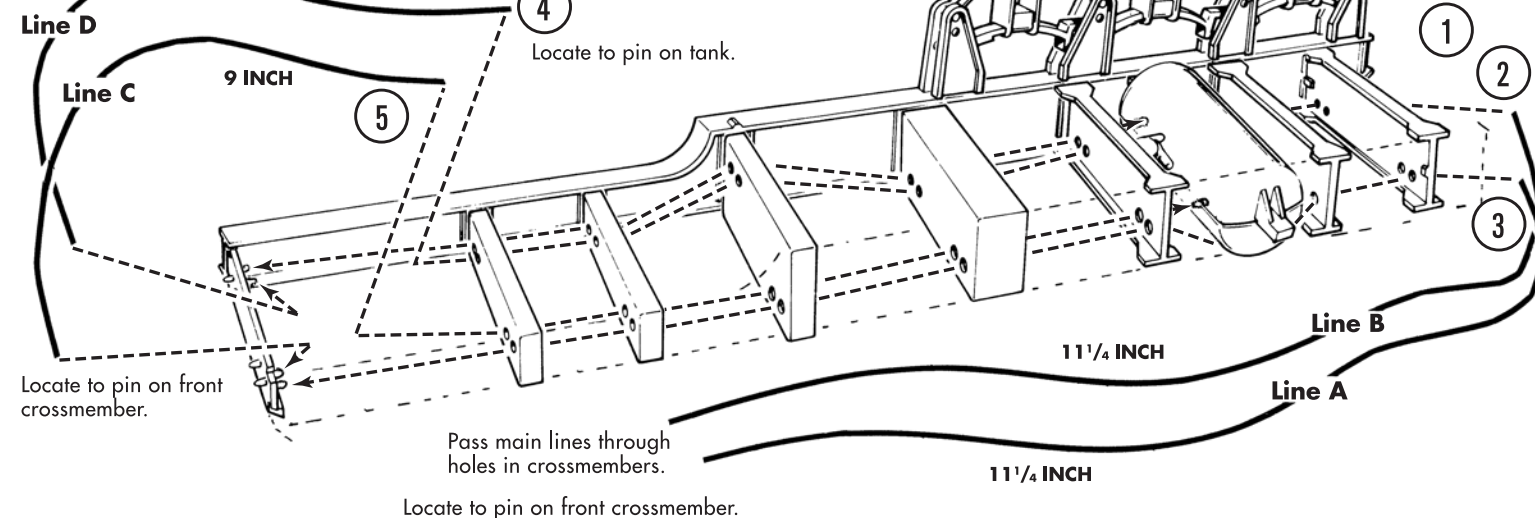
17 Carefully snap "Dump Box" to tractor supports.



BRAKE LINES

Cut tubing to sizes indicated. Locate where shown.

Feed lines under hydraulic tank.



HYDRAULIC LIFT

