

'73 MUSTANG

IMPORTANT: READ THIS FIRST

You may build this kit more than one way. Before you begin building, look over the instructions carefully. Following the procedure given, test-fit parts together without cementing, after you've decided what version to build. This way you will be more familiar with the location of parts when it becomes time to use cement.

For removing small parts from the "runners" it is best to use a modelers knife, do not attempt to "twist" them off.

The highest quality styrene plastic goes into the making of each MPC model. Only paint and cement made for styrene should be used. Before joining parts,

trim off excess plastic or "flash." Scrape plating from chromed parts where they are to be joined with other parts. Be careful not to get cement on exposed areas. To join parts, use cement sparingly. Apply cement to very small parts with a toothpick.

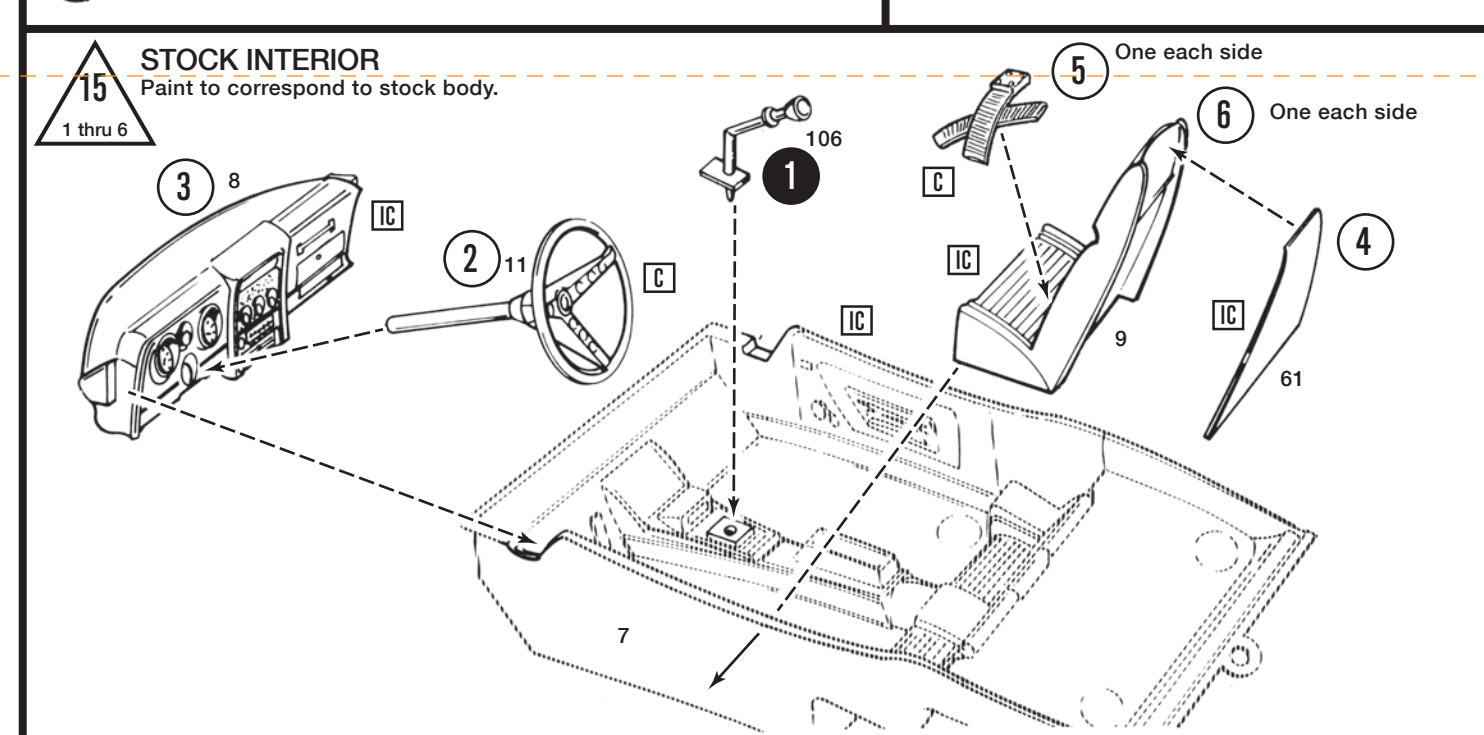
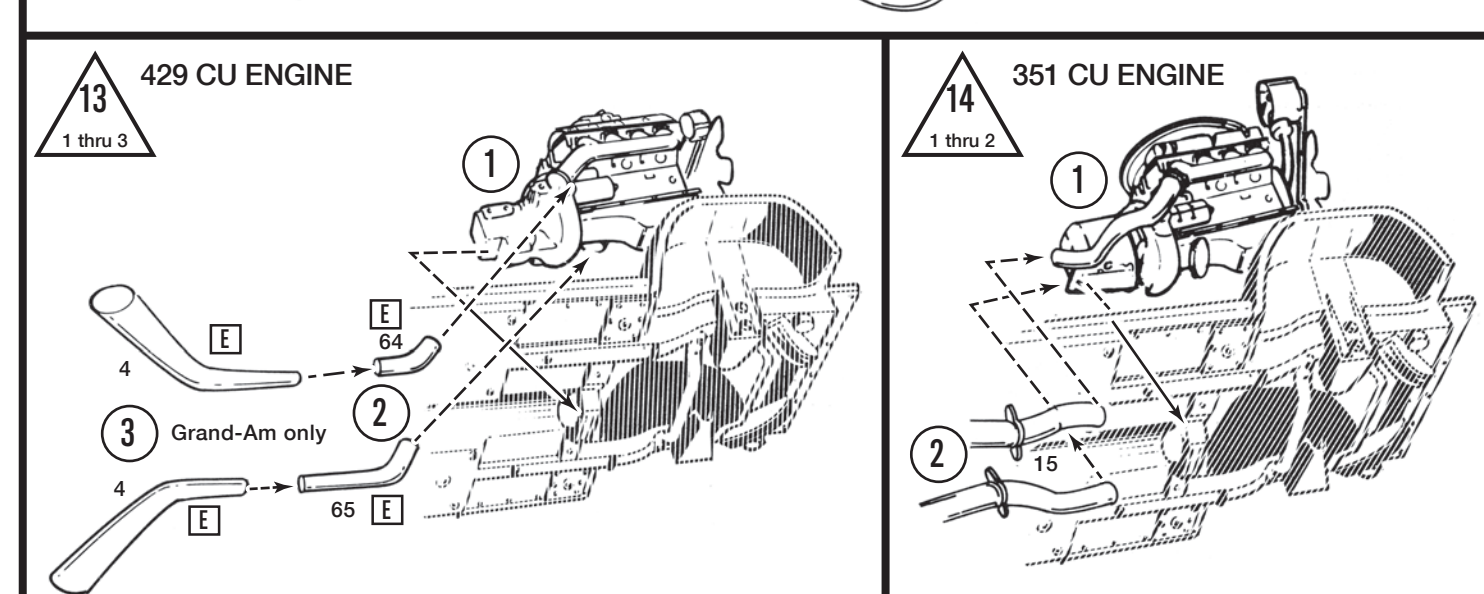
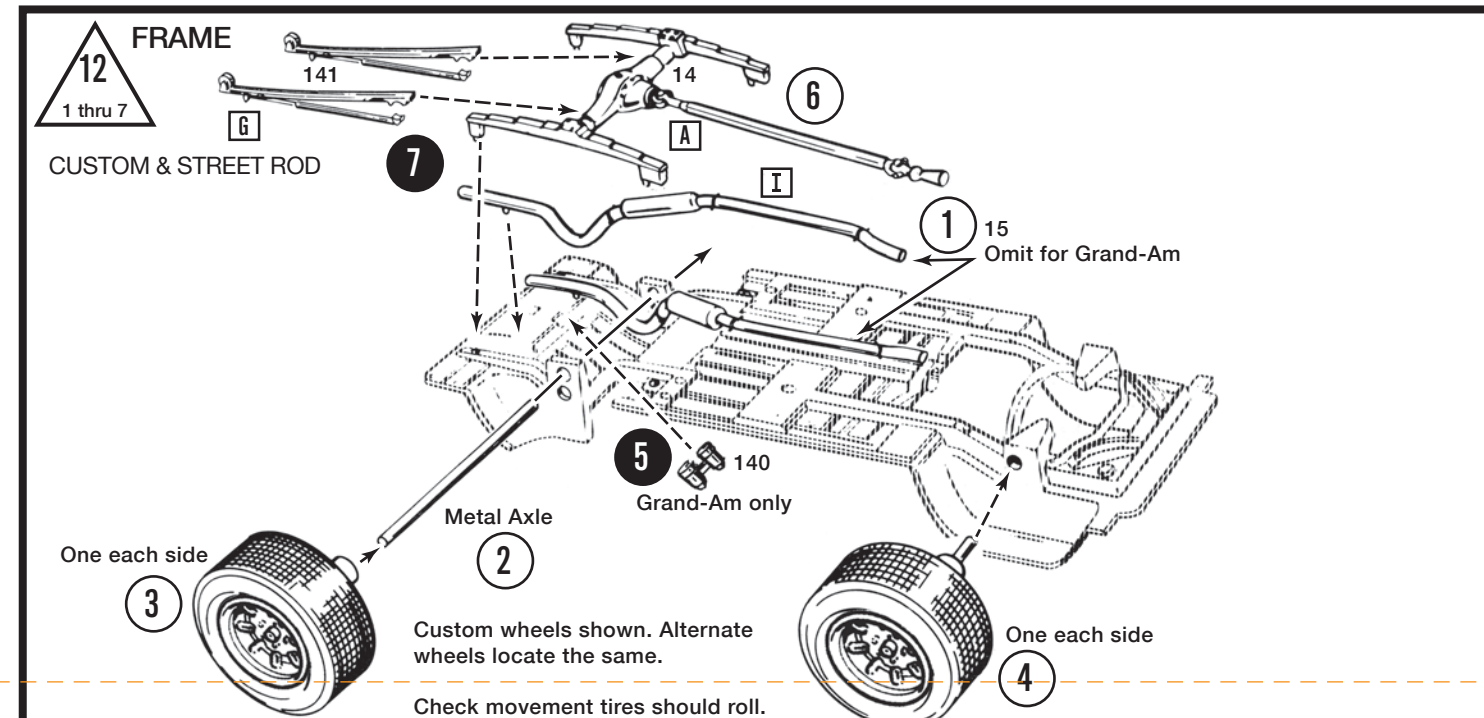
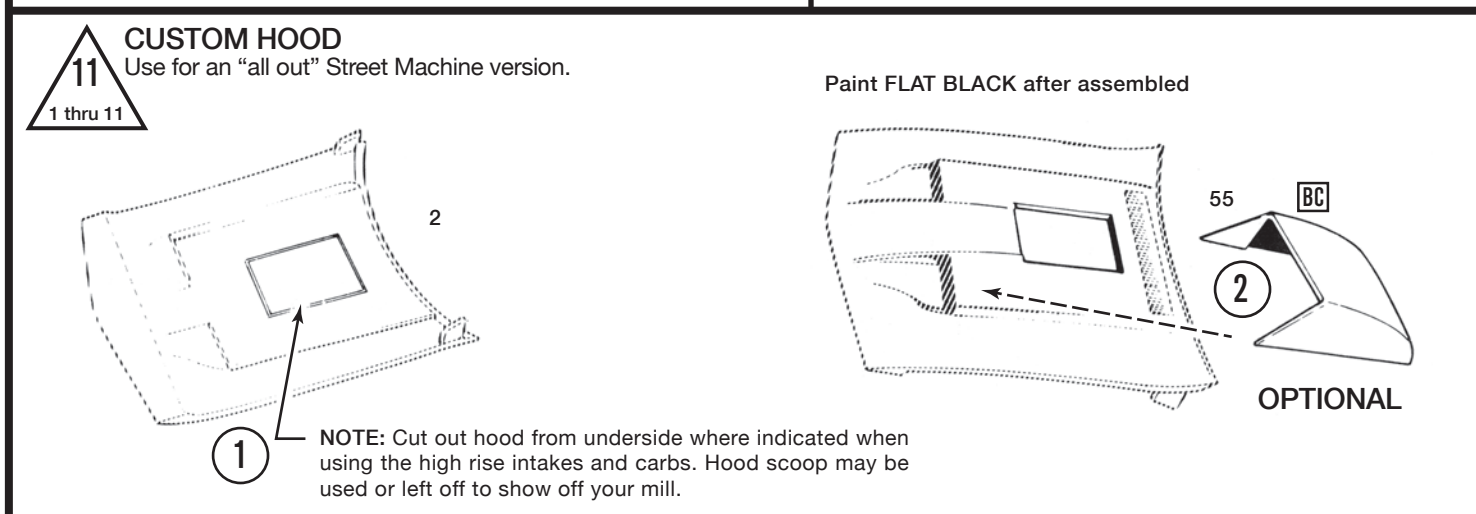
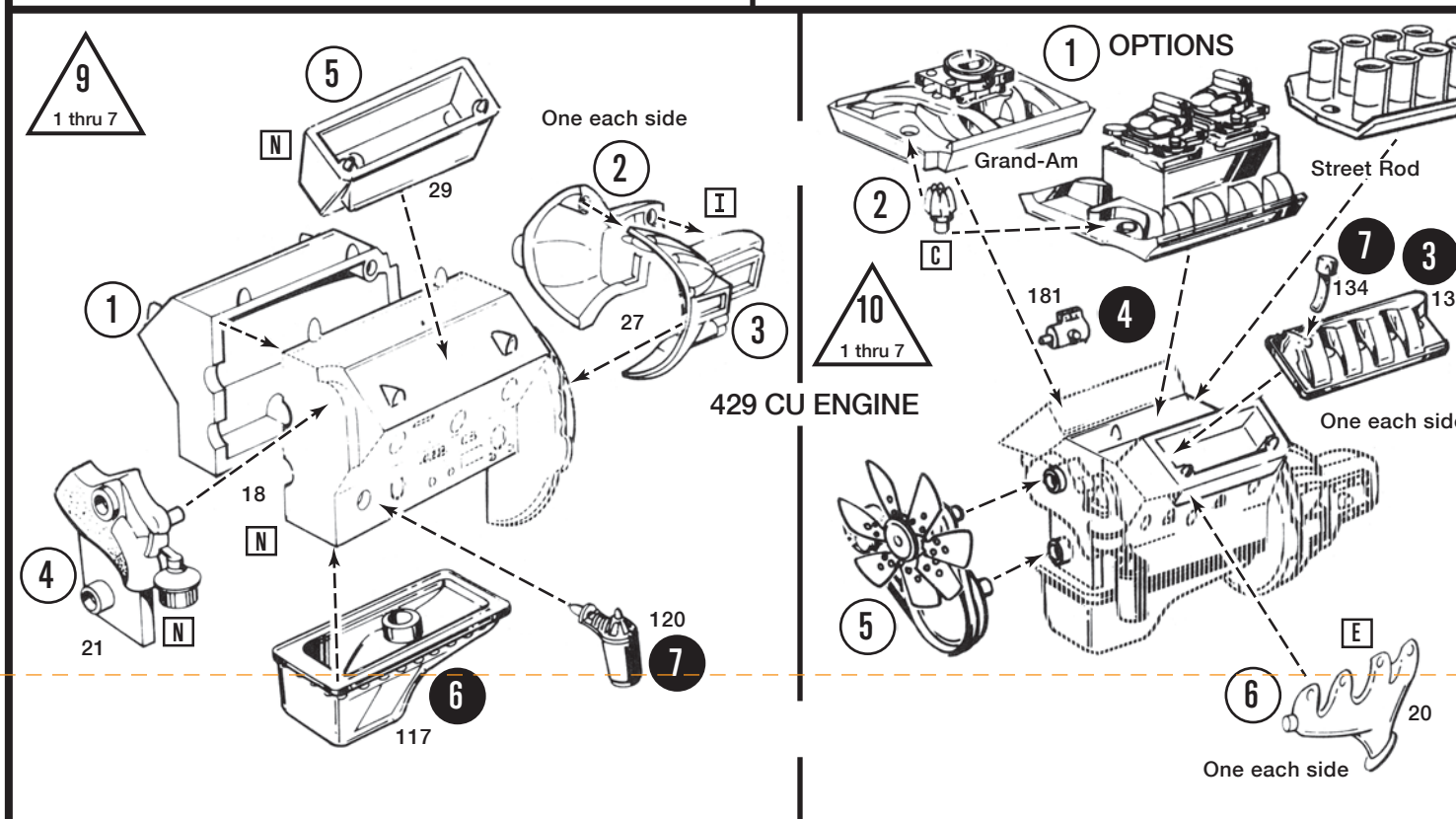
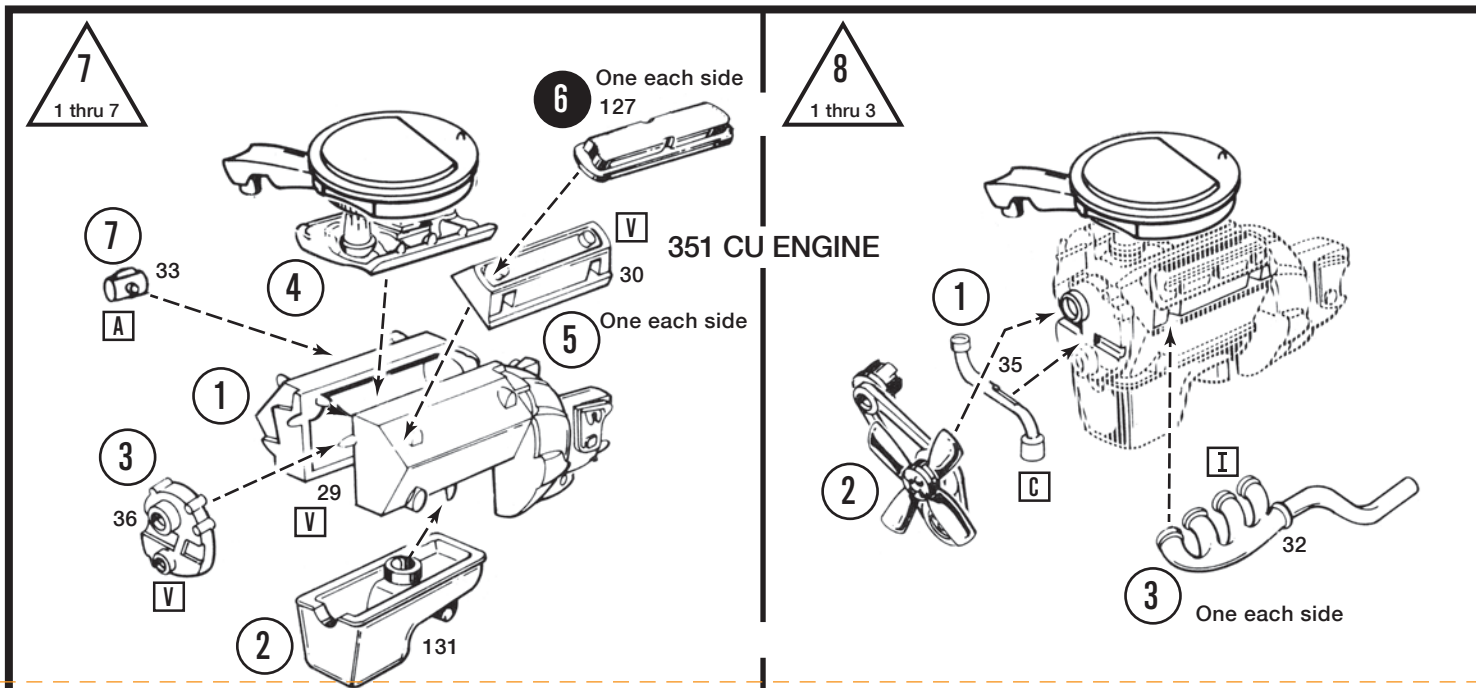
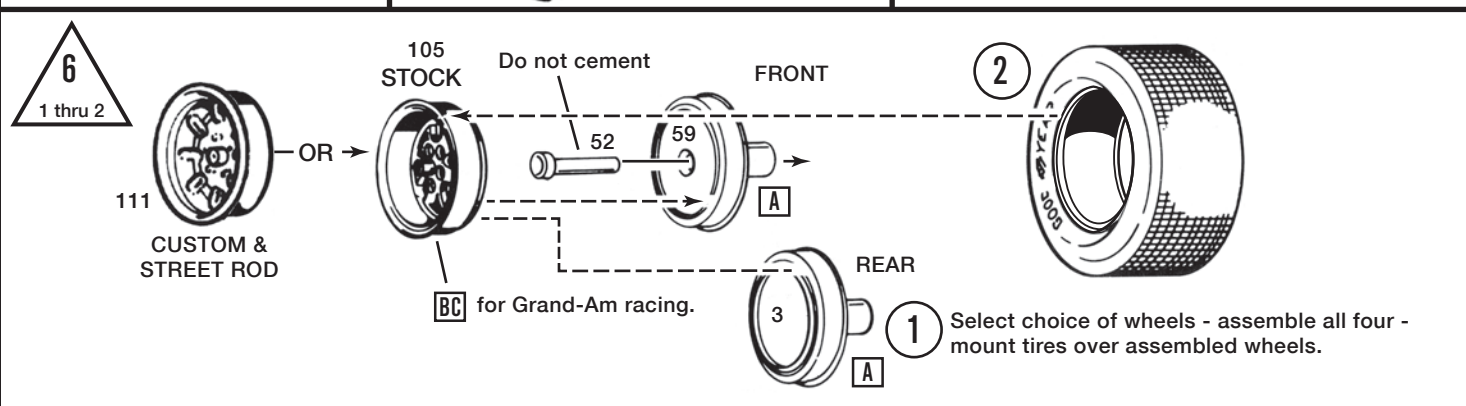
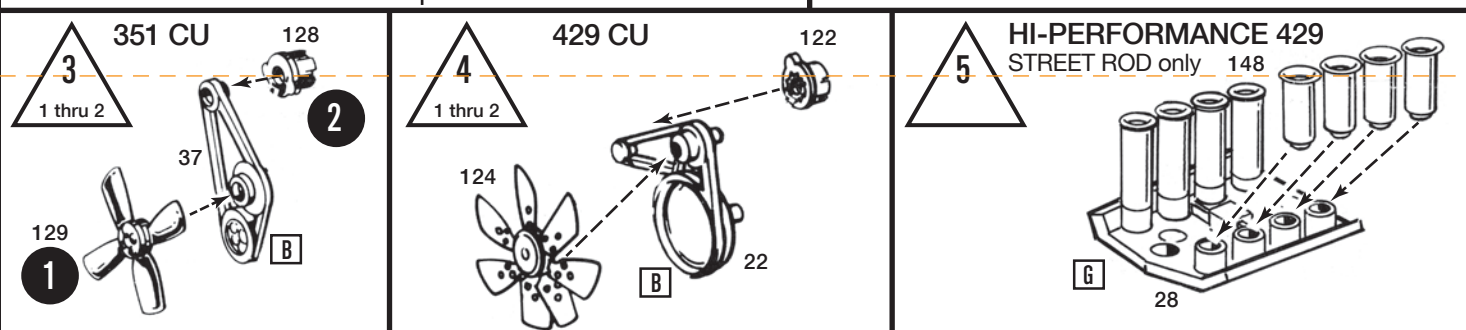
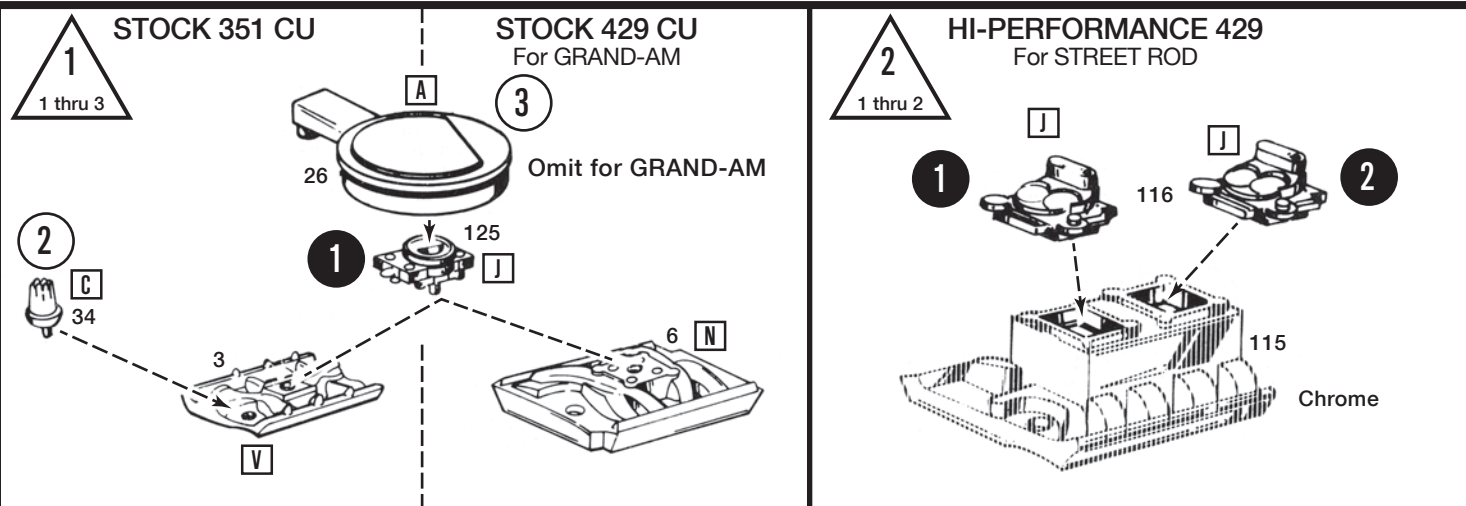
When painting your model it is best to cement all non-chrome accessories to the body and paint the whole unit at one time.

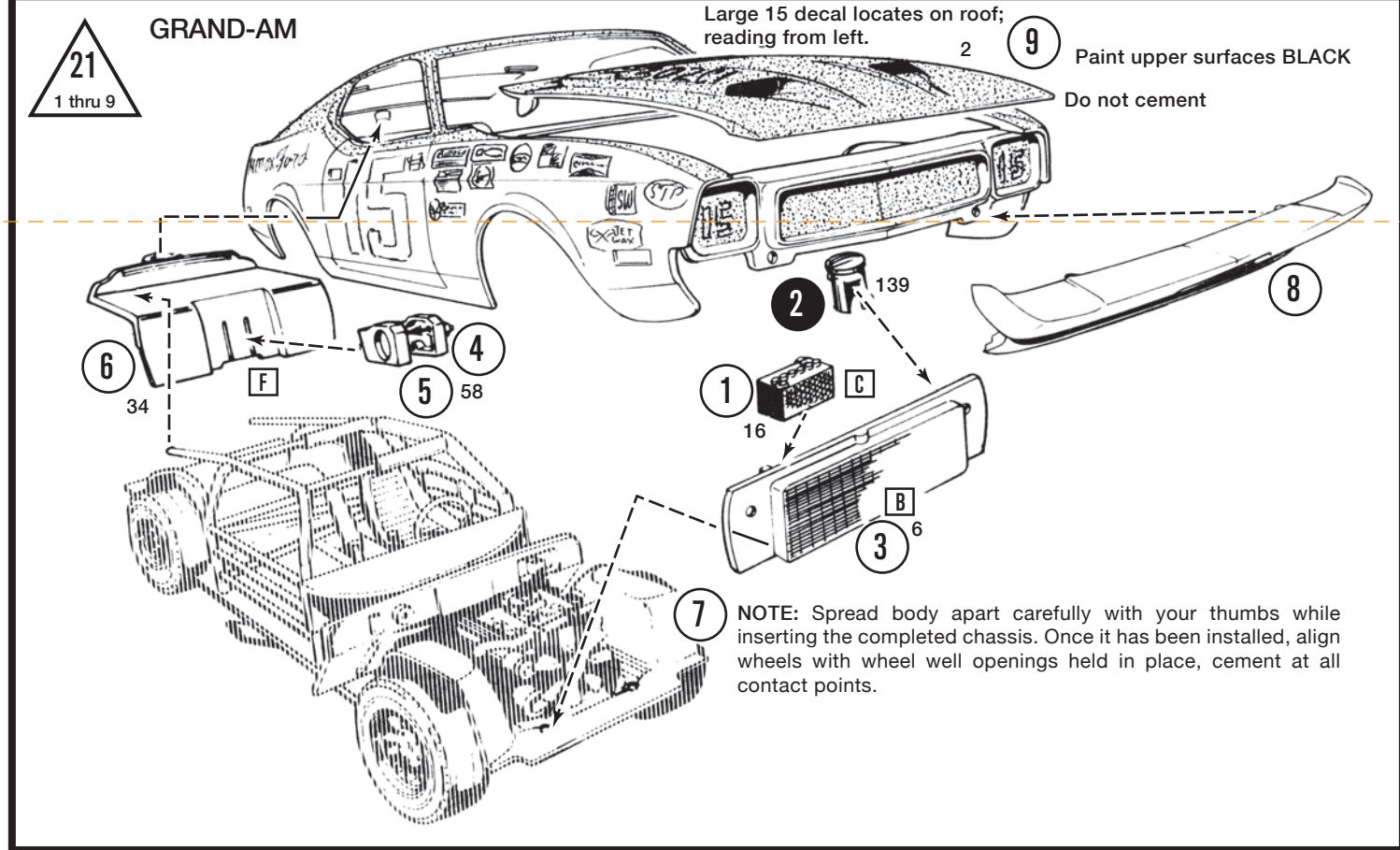
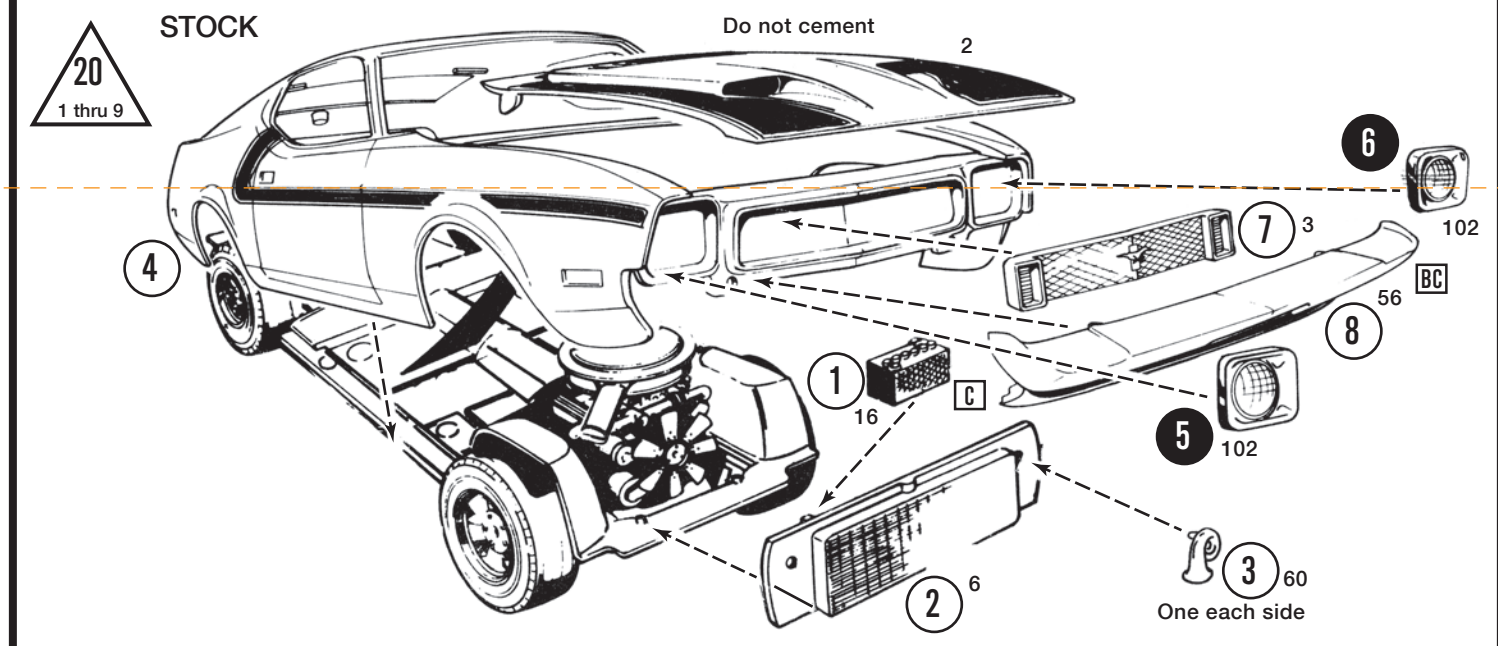
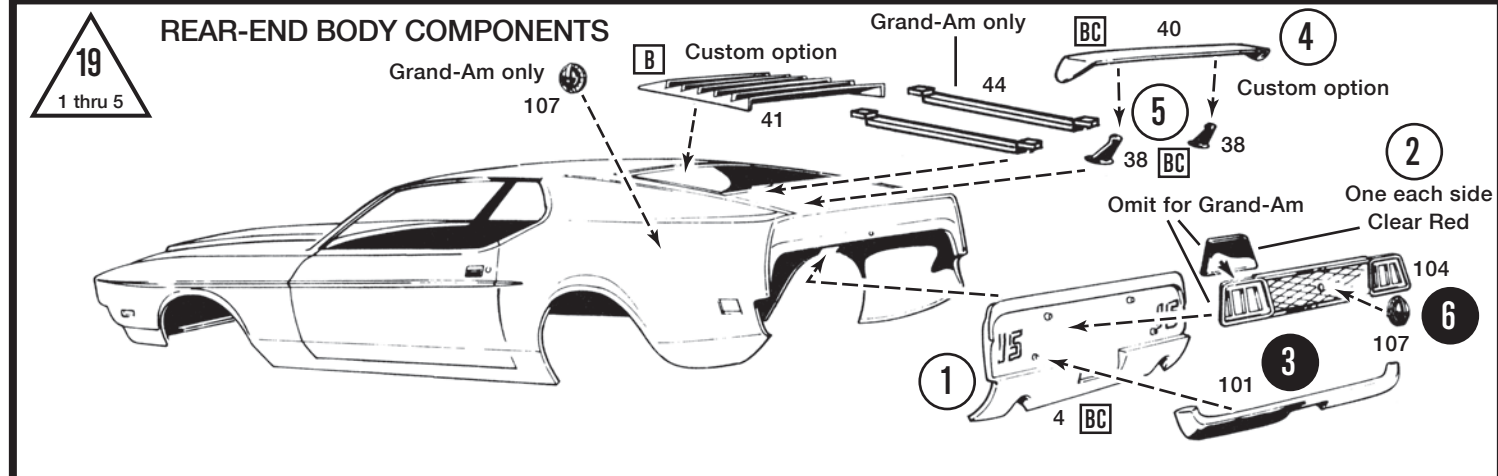
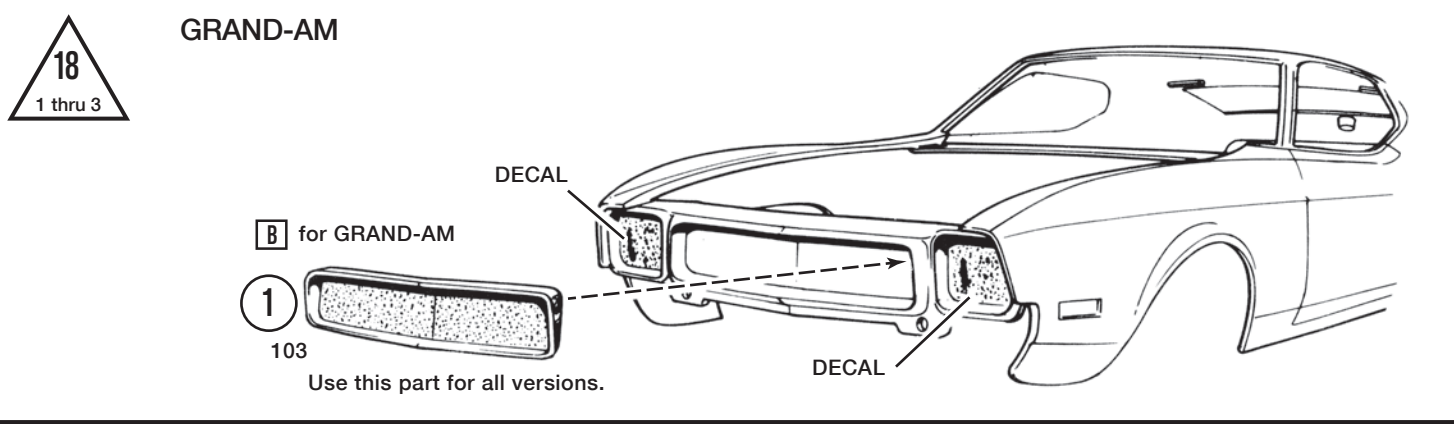
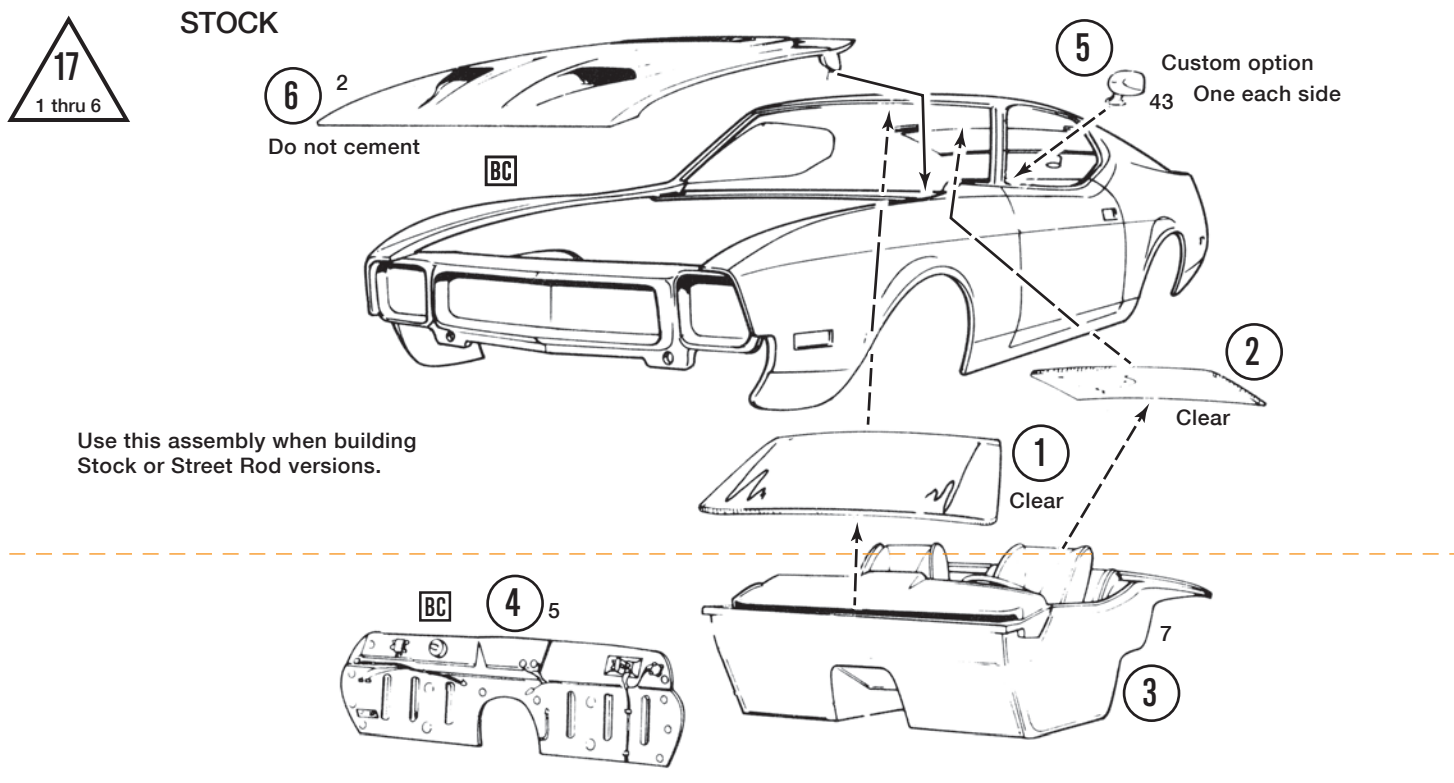
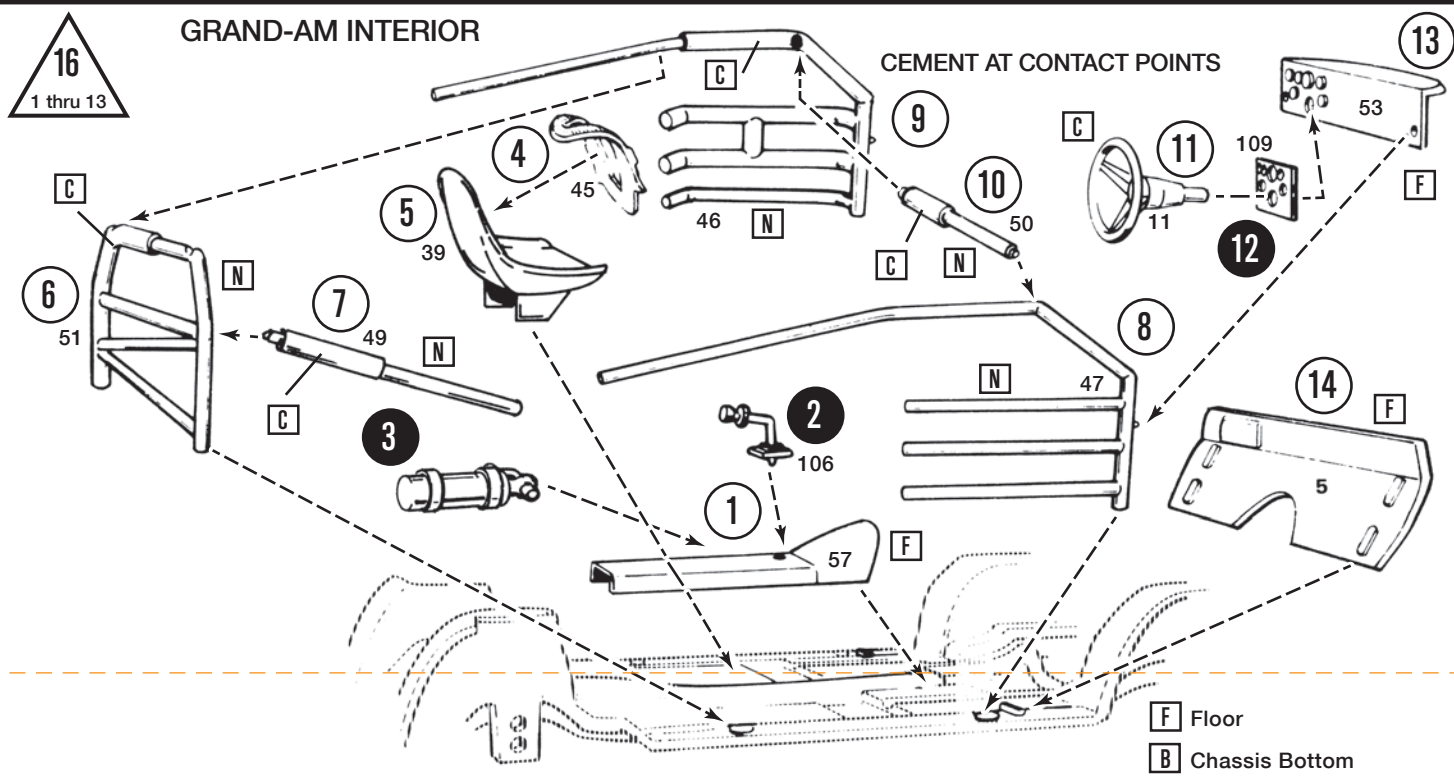
You should have no trouble assembling your kit if the instructions are followed properly. The parts are numbered in the order of assembly.

NON PLATED PARTS ● PLATED PARTS



PLATED PARTS





PAINT COLORS

A Black	H Aluminum	O Transparent Red	V Dark Blue
B Flat Black	I Steel	P Orange	W Transparent Blue
C Semi-Gloss Black	J Brass	Q Yellow	X Lt. Green
D White	K Gold	R Tan	Y Dark Green
E Flat White	L Amber	S Brown	Z Gray
F Silver	M Transparent Amber	T Lt. Blue	AA Purple
G Chrome (Bright Silver)	N Red	U Med. Blue	BB Beige

BC Body Color	IC Interior Color
▲ Semi-Gloss	▲ Gloss
▲ Metallic	

CHECK OUT THESE OTHER GREAT KITS FROM MPC!



MPC840/12 1970 Pontiac Pickup/Open Sportster



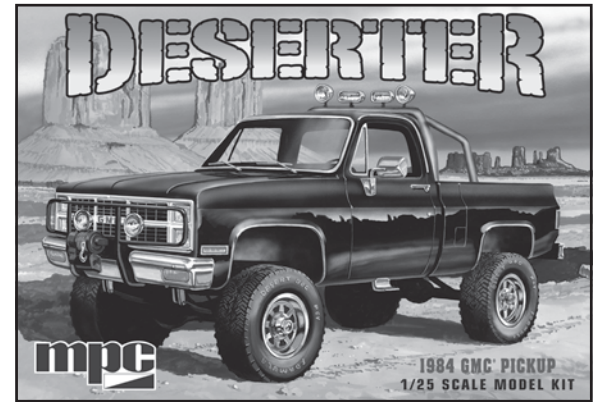
MPC843/12 1980 Plymouth Volare



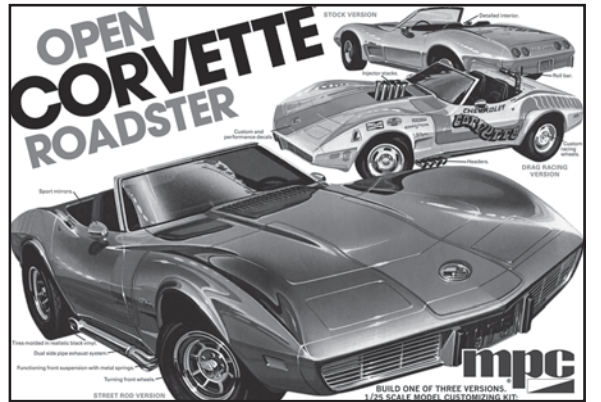
MPC832/12 1969 Plymouth Barracuda



MPC845/12 1979 Pinto Pony Express



MPC847/12 1984 GMC Pickup



MPC842/12 1975 Corvette Convertible