

## IMPORTANT! READ THIS FIRST

- Study assembly drawings carefully before starting.
- Each part is identified by a part number.
- Plated parts will be identified by a star beside part number.
- Scrape paint and plating from areas to be cemented.
- Before cement is used, check the fit of each part.
- Use only enough cement to join parts.
- Apply cement to small parts with a toothpick.
- Use cement made for styrene plastic only.
- Allow paint to dry thoroughly before handling.
- Your model may be painted to match the box photos.
- Cement all parts except where Do Not Cement symbol is shown.
- Follow the step numbers in each assembly drawing.
- Refer to other assembly drawing for location.

**5** \_\_\_\_\_ **STEP NUMBERS**

32 — PLASTIC PART NUMBERS

\*132 — PLATED PART NUMBERS

 \_\_\_\_\_ OPTIONAL

 \_\_\_\_\_ DO NOT CEMENT

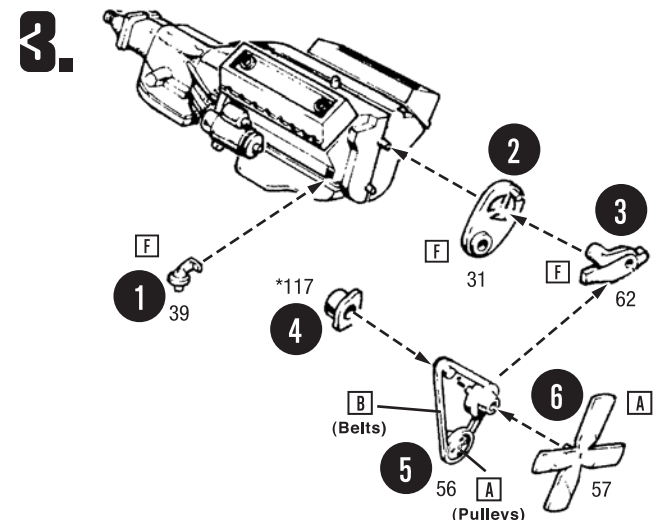
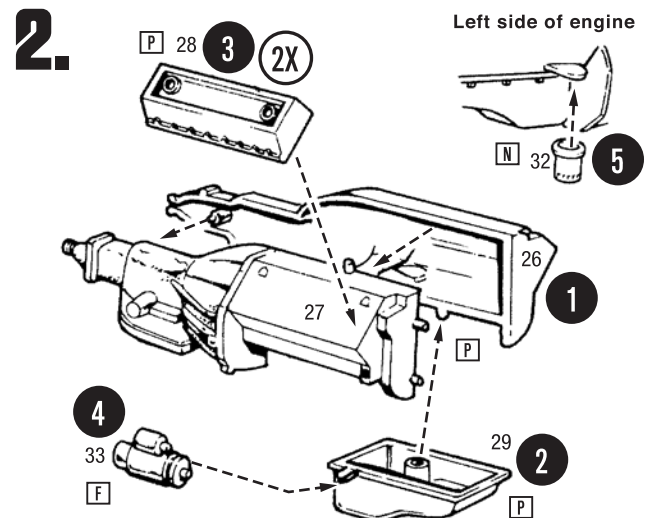


CEMENT HERE ONLY

**(2X) — REPEAT SEVERAL TIMES**

 REMOVE

★ \_\_\_\_\_ REFER TO.....



Round 2, LLC  
4073 Meghan Beeler Court  
South Bend, IN 46628

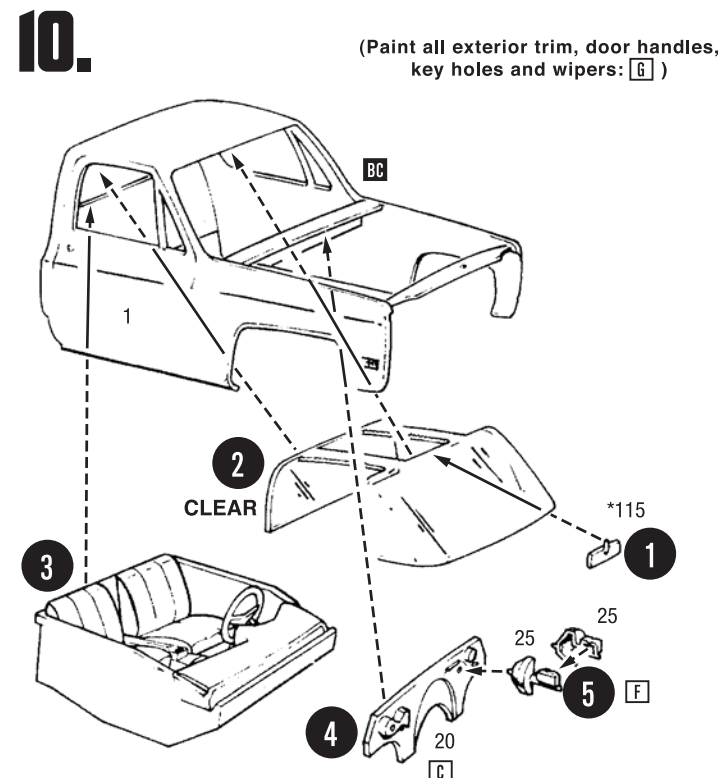
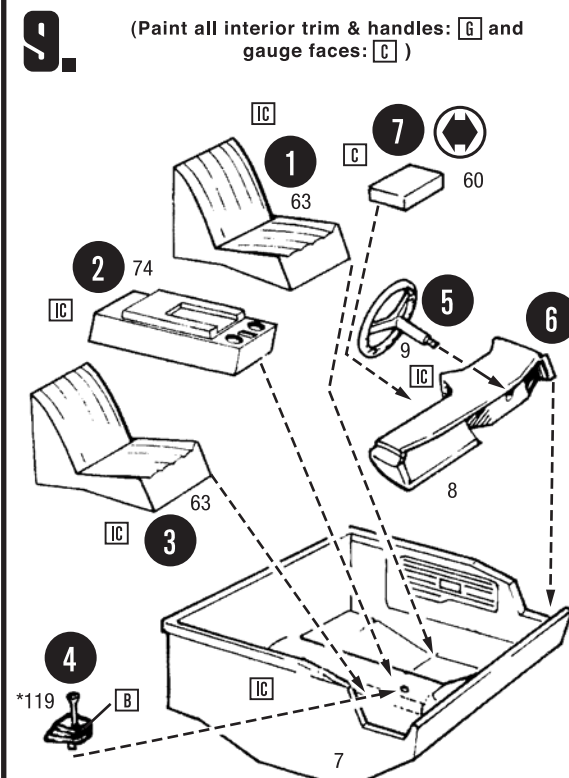
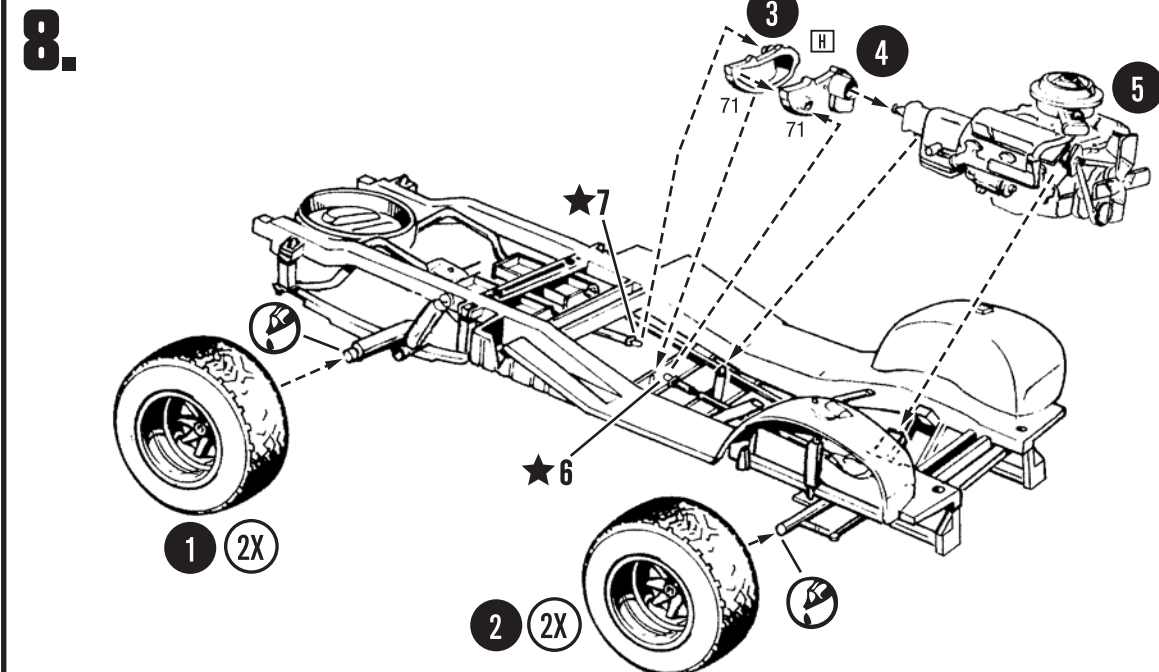
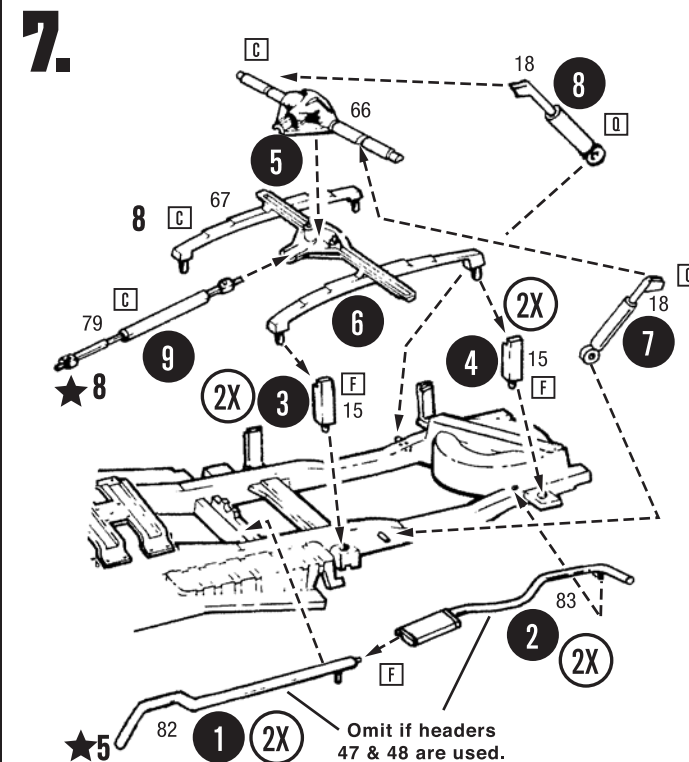
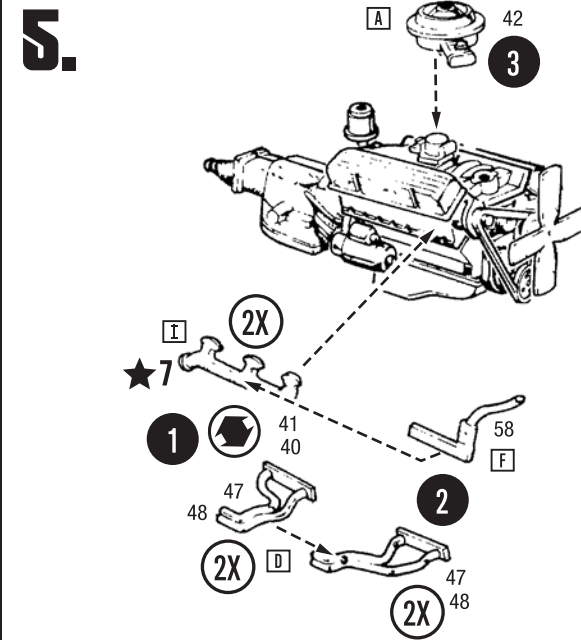
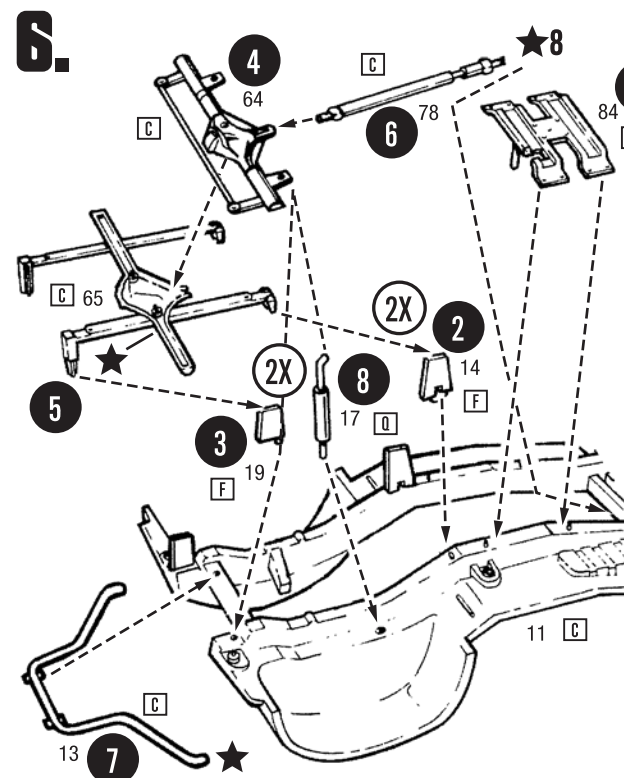
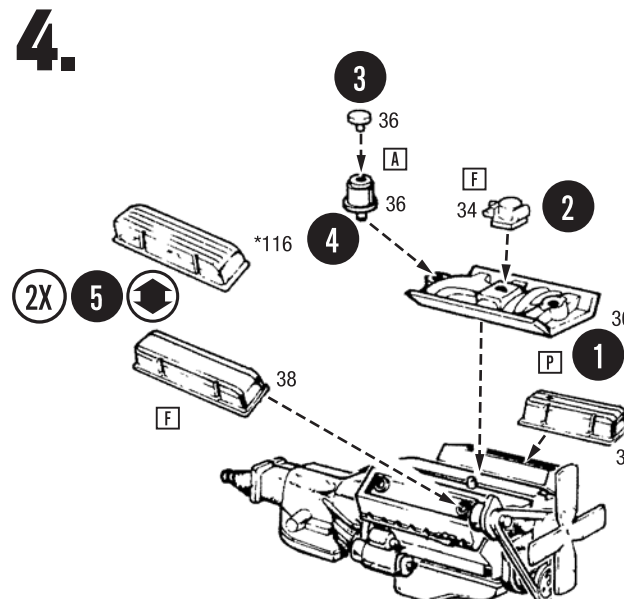
CE

International Hobbycraft (UK) Ltd.  
21 St. Thomas Street  
Bristol BS1 6JS England

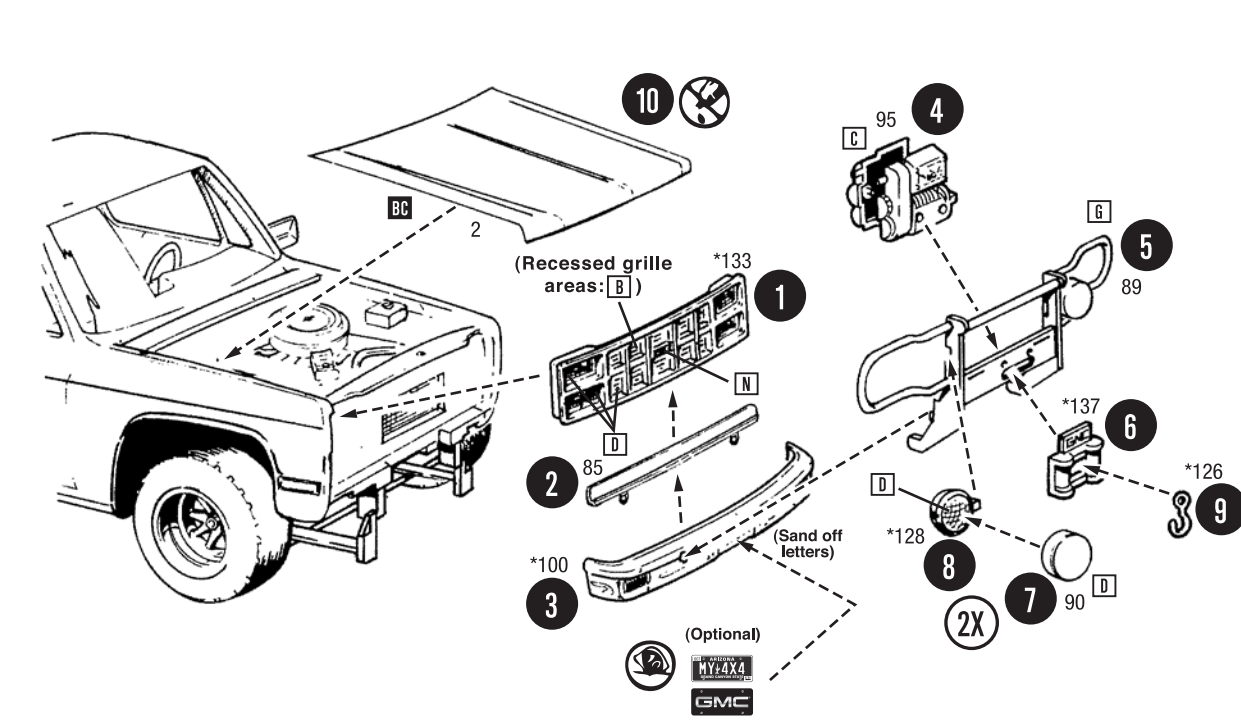
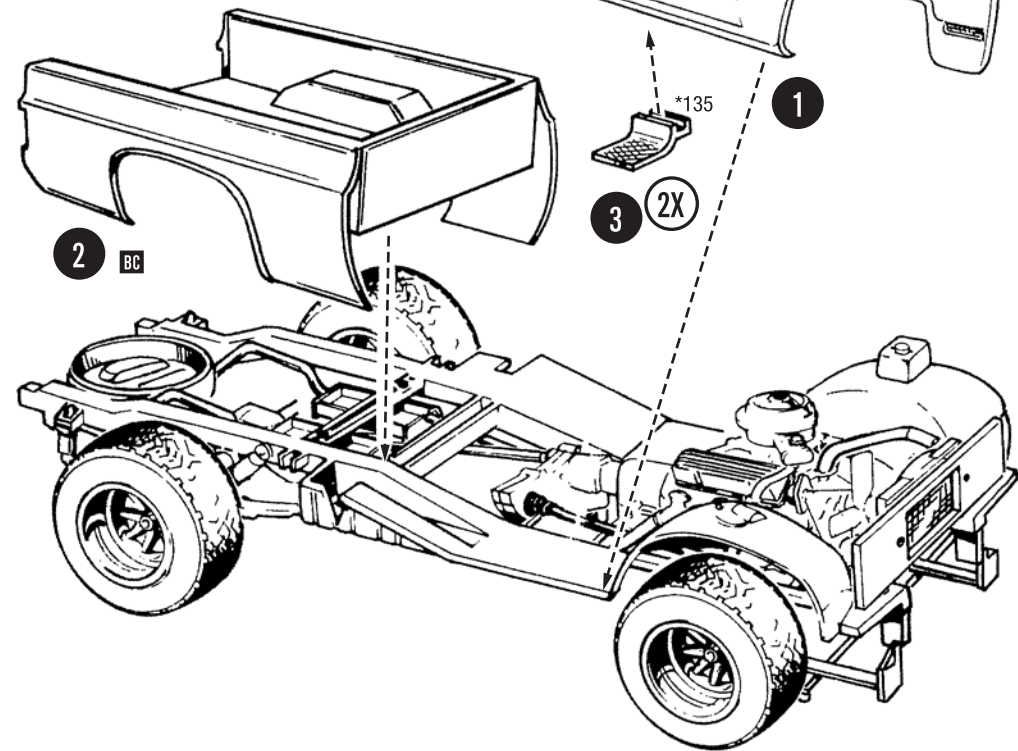
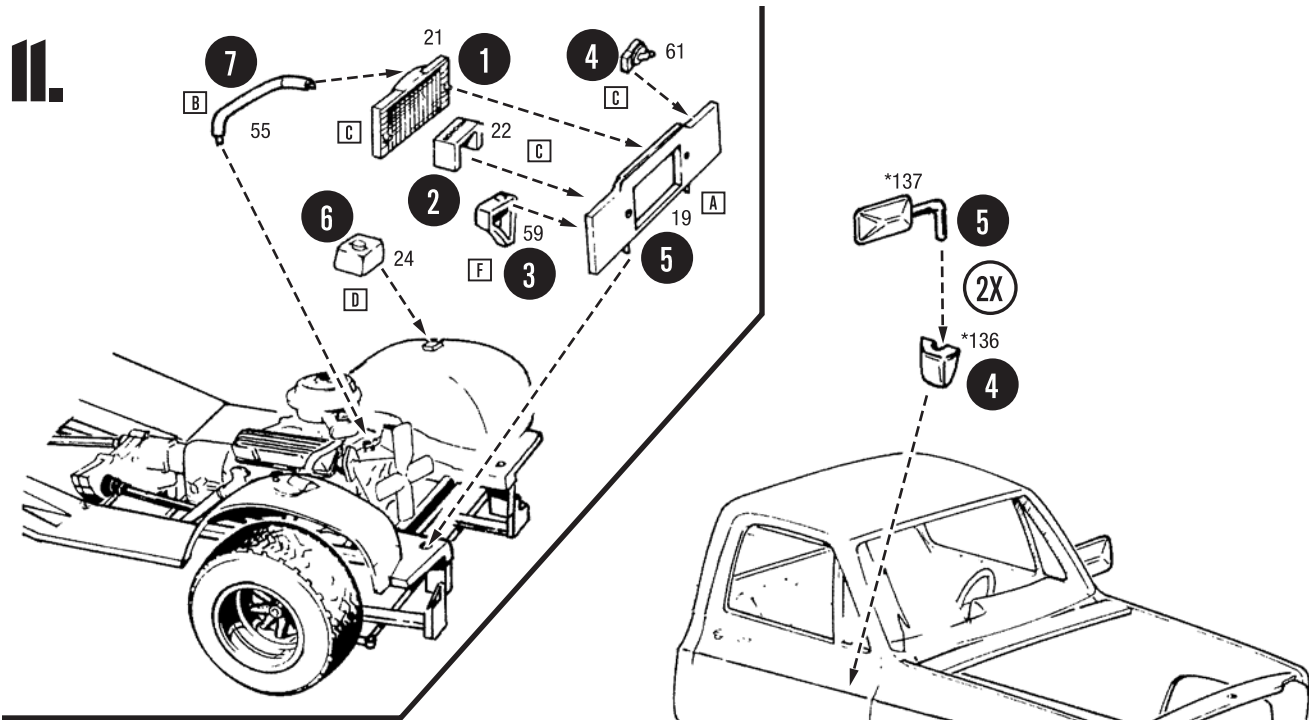
**round2models.com**



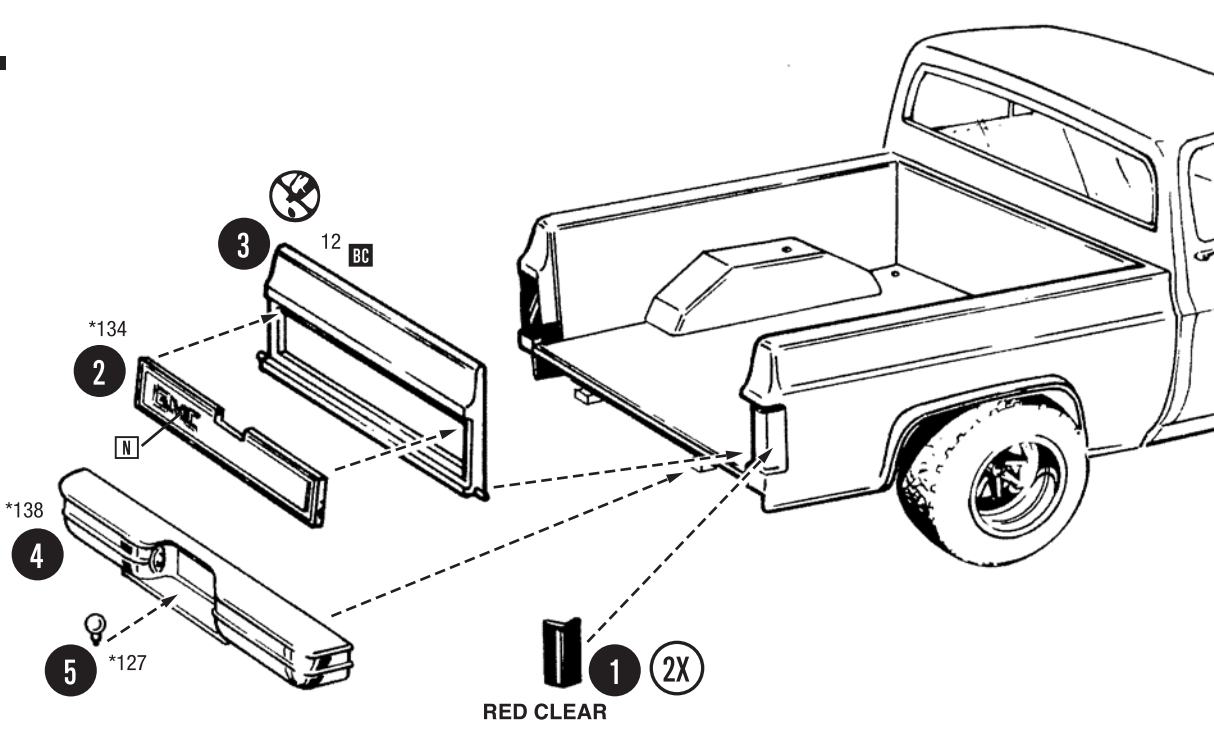
GENERAL MOTORS Trademarks used under license to Round 2, LLC. MPC and design and ROUND 2 and design are registered trademarks of Round 2, LLC. ©2016 Round 2, LLC, South Bend, IN 46628 USA. Product and packaging designed in the USA. Made in China. All rights reserved.



## 12.

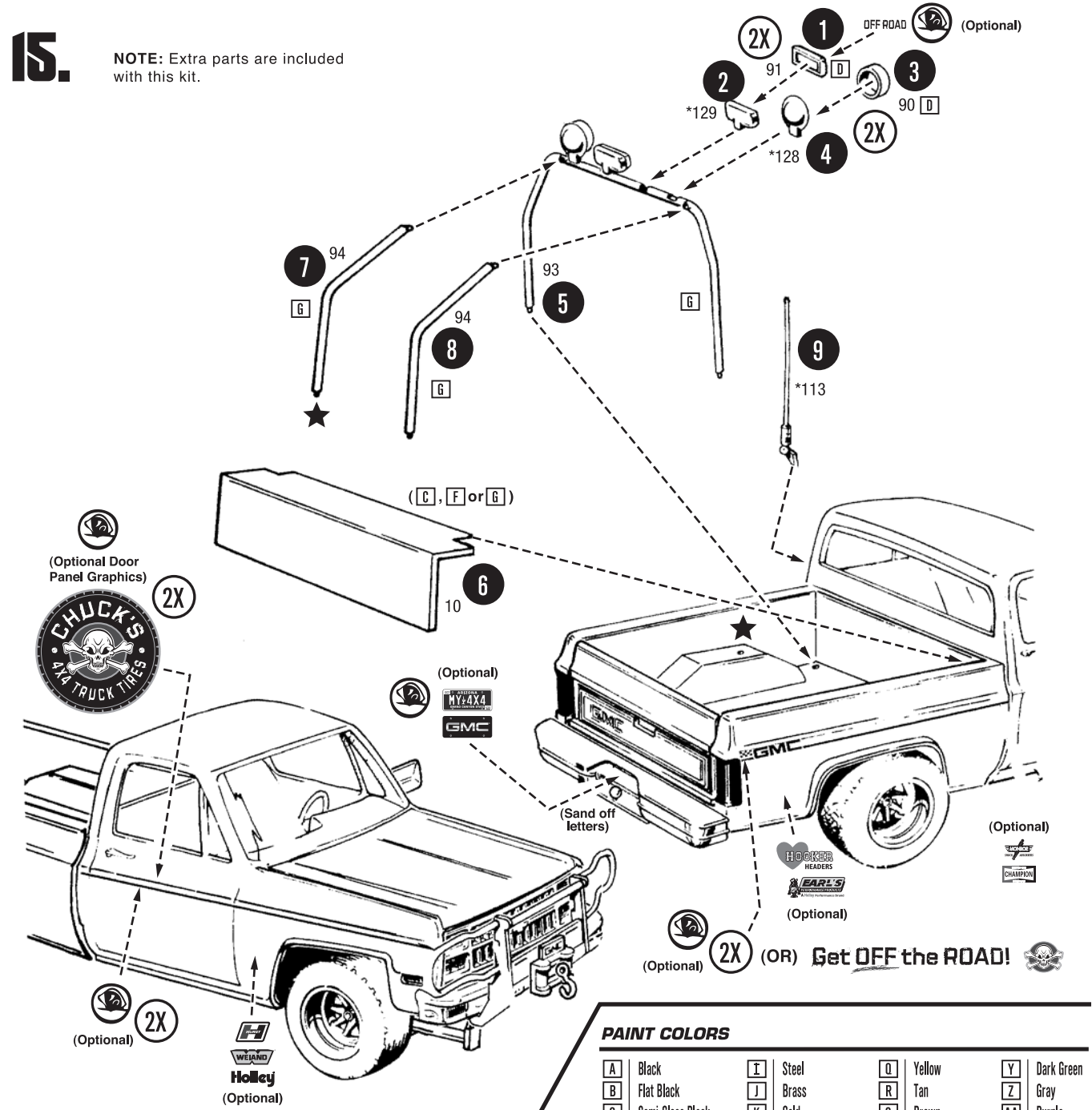


14.



**15.**

**NOTE:** Extra parts are included with this kit.






**EXTERIOR COLORS:** White, Silver, Charcoal Medium Blue, Bright Blue, Dark Blue, Blue, Medium Green, Bright Green, Dark Green, Yellow, Natural, Camel Beige, Camel, Saddle, Carmine, Dark Carmine, Red, Russet, Brown, Midnight Black, Wheatland Yellow, Tanger Orange

**INTERIOR COLORS:** Black, Blue, Grey, Red, Saddle

It is recommended that you search the internet for more specific details regarding factory specifications.

## ***PAINT COLORS***

<b>A</b>	Black	<b>I</b>	Steel	<b>Q</b>	Yellow	<b>Y</b>	Dark Green
<b>B</b>	Flat Black	<b>J</b>	Brass	<b>R</b>	Tan	<b>Z</b>	Gray
<b>C</b>	Semi-Gloss Black	<b>K</b>	Gold	<b>S</b>	Brown	<b>AA</b>	Purple
<b>D</b>	White	<b>L</b>	Amber	<b>T</b>	Light Blue	<b>IC</b>	Interior Color
<b>E</b>	Flat White	<b>M</b>	Transparent Amber	<b>U</b>	Med. Blue	<b>BC</b>	Body Color
<b>F</b>	Silver	<b>N</b>	Red	<b>V</b>	Dark Blue		Semi-Gloss
<b>G</b>	Chrome (Bright Silver)	<b>O</b>	Transparent Red	<b>W</b>	Transparent Blue		Gloss
<b>H</b>	Aluminum	<b>P</b>	Orange	<b>X</b>	Light Green		Metallic