

SQUAD ROD



M851-200

STEP NUMBERS FOR
NON-CHROMED PARTS 10

STEP NUMBERS FOR
CHROMED PARTS 10

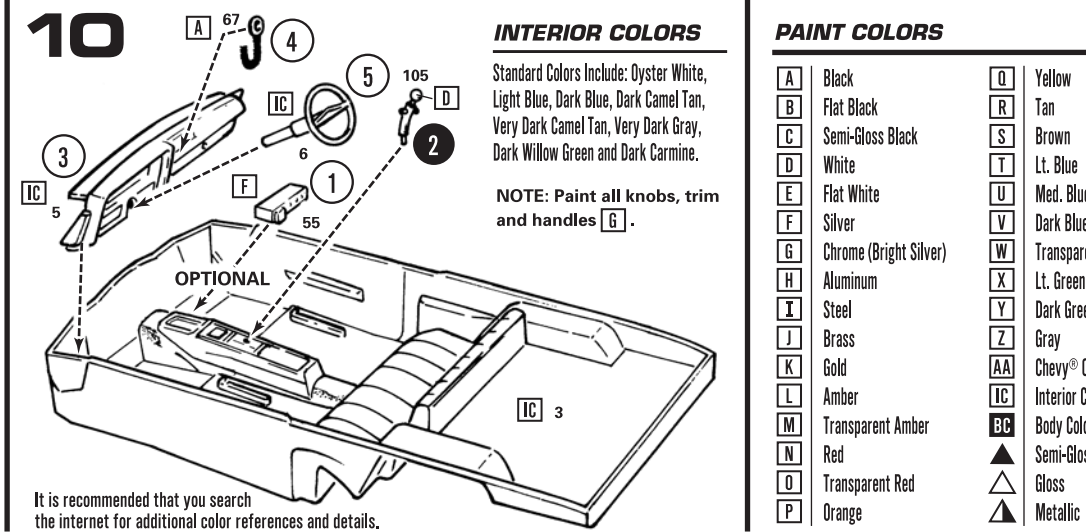
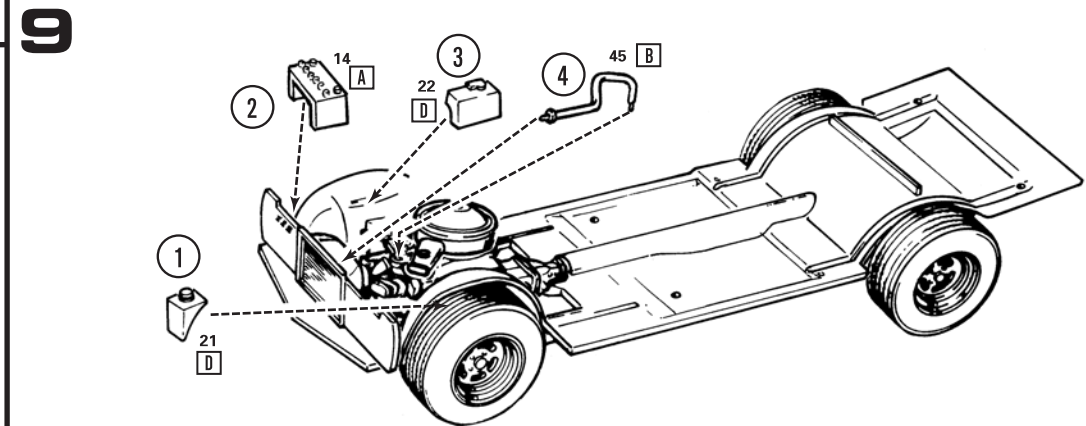
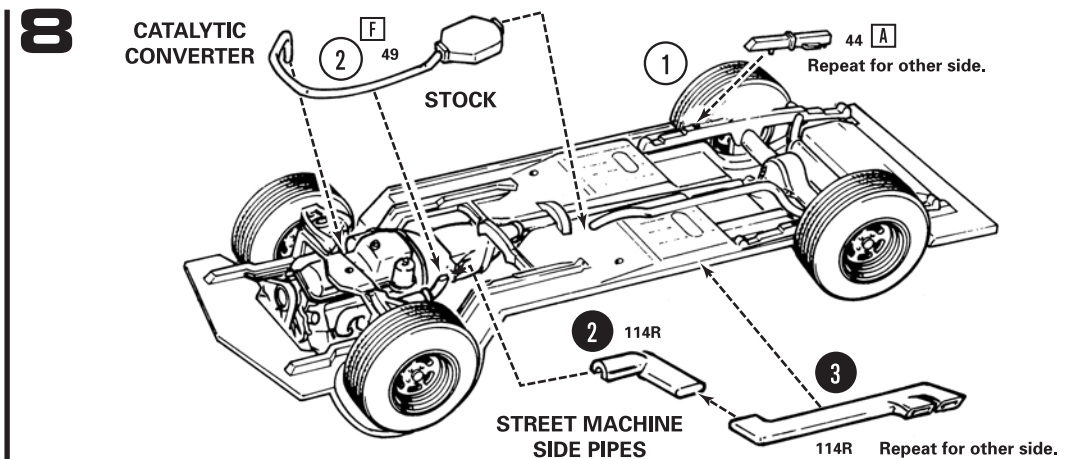
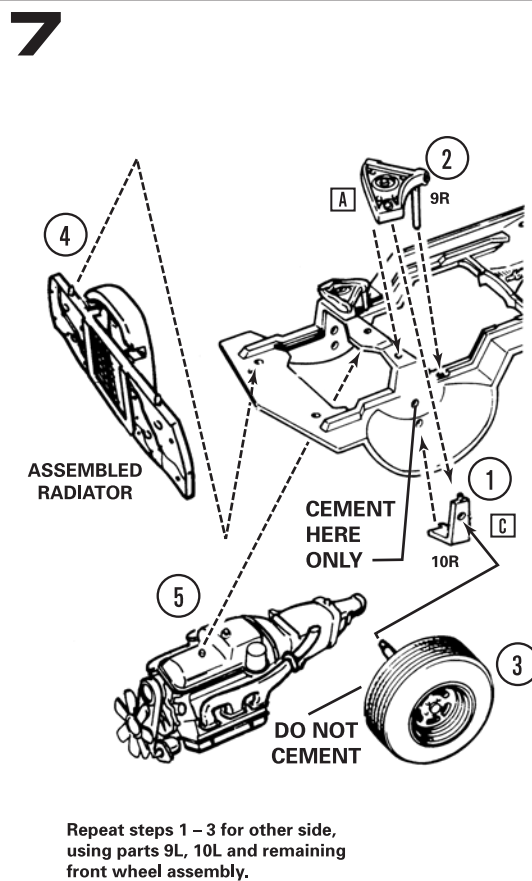
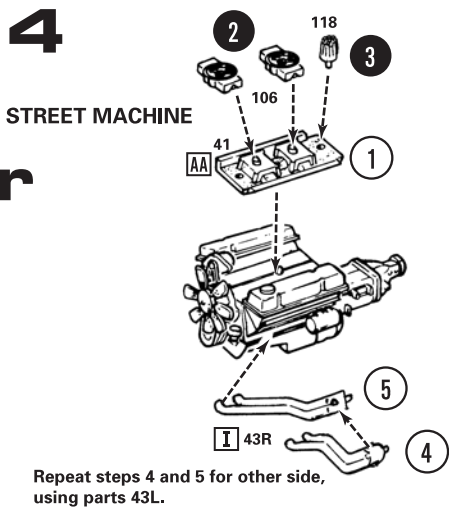
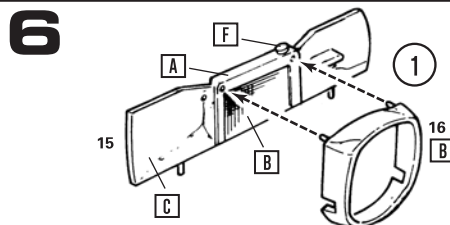
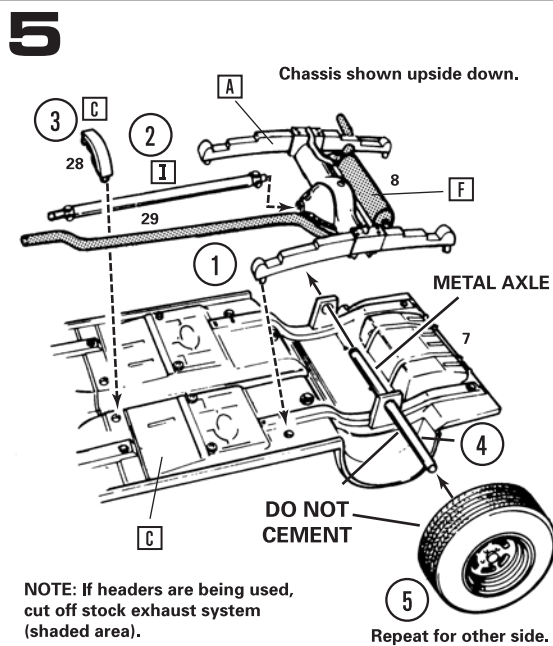
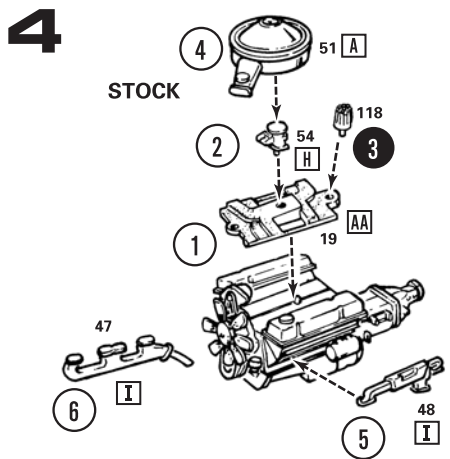
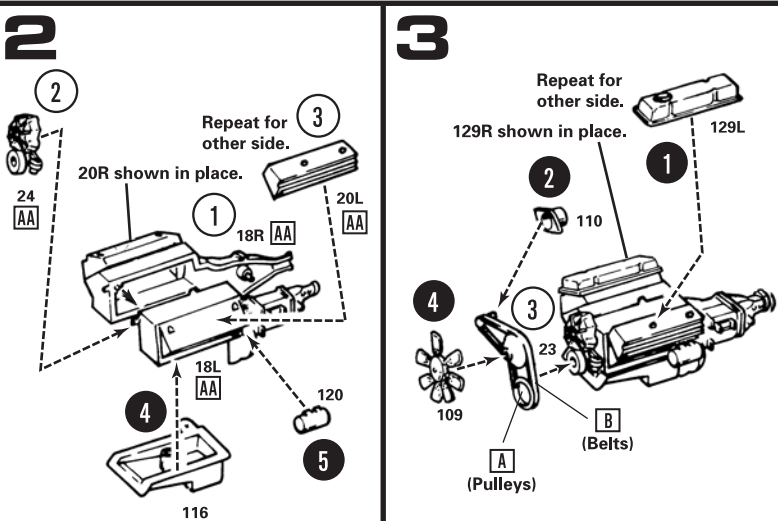
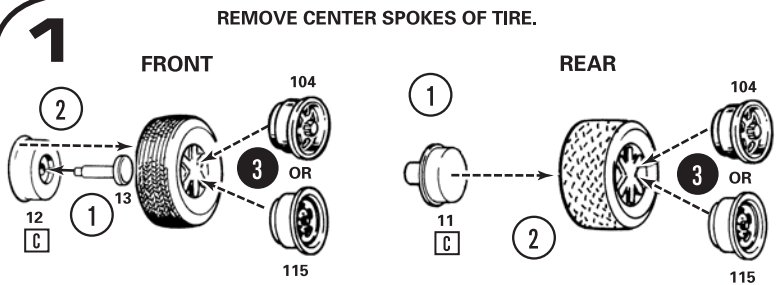
PART NUMBERS 37

CEMENT ----->
DO NOT CEMENT ----->

CLEAR PLASTIC PARTS CLEAR

RED CLEAR PLASTIC PARTS RED CLEAR

IMPORTANT! READ THESE INSTRUCTIONS FIRST. Before you begin building your kit, read the instructions and study the illustrations carefully. Test fit the parts before cementing them together, to acquaint yourself with their proper location. It is best to cut the parts from the "runners" with a modelers knife instead of twisting them off. Cut the parts only as they're needed. Only paint and cement made for styrene should be used. Trim off excess plastic or "flash". The plating should be scraped from chromed parts where they are to be cemented. Use cement sparingly. Apply cement to small parts with a toothpick. When painting your model it is best to cement all non-chromed parts to the body and paint the whole unit at one time.



INTERIOR COLORS

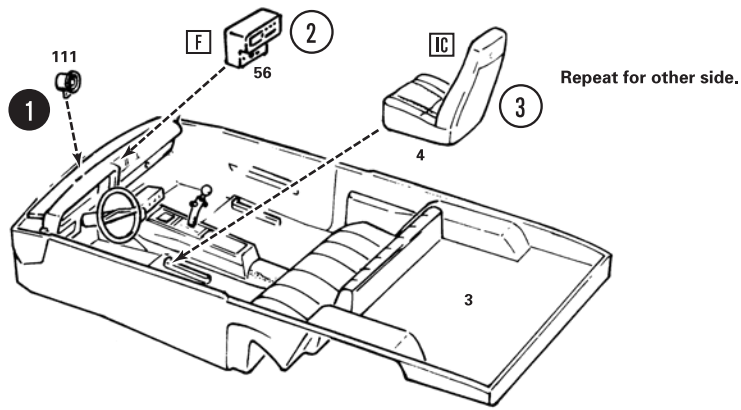
Standard Colors Include: Oyster White, Light Blue, Dark Blue, Dark Camel Tan, Very Dark Camel Tan, Very Dark Gray, Dark Willow Green and Dark Carmine.

NOTE: Paint all knobs, trim and handles 6.

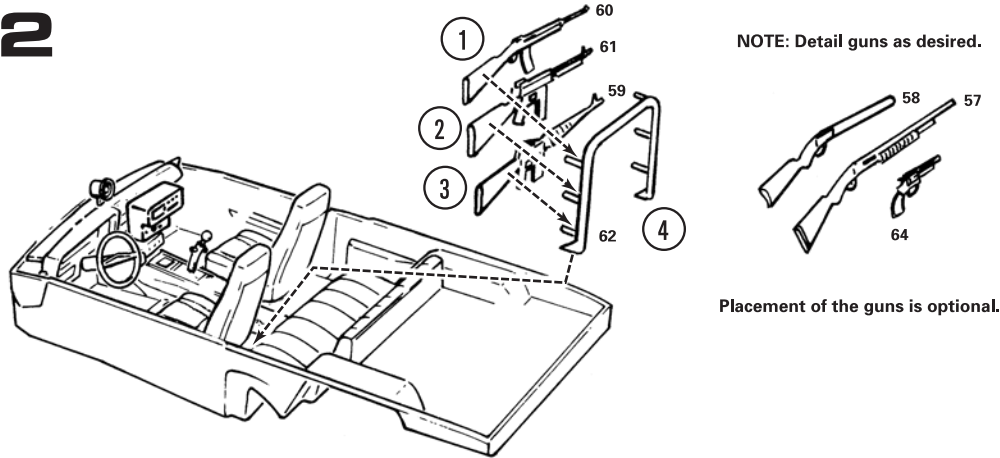
PAINT COLORS

A	Black	Q	Yellow
B	Flat Black	R	Tan
C	Semi-Gloss Black	S	Brown
D	White	T	Lt. Blue
E	Flat White	U	Med. Blue
F	Silver	V	Dark Blue
G	Chrome (Bright Silver)	W	Transparent Blue
H	Aluminum	X	Lt. Green
I	Steel	Y	Dark Green
J	Brass	Z	Gray
K	Gold	AA	Chevy® Orange
L	Amber	IC	Interior Color
M	Transparent Amber	BC	Body Color
N	Red	▲	Semi-Gloss
O	Transparent Red	△	Gloss
P	Orange	▲	Metallic

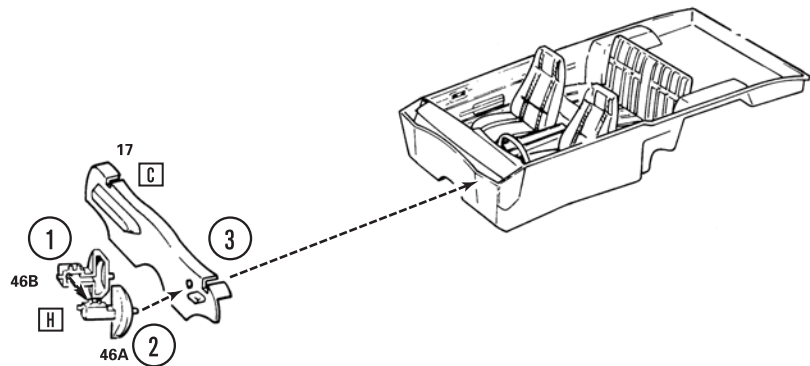
11



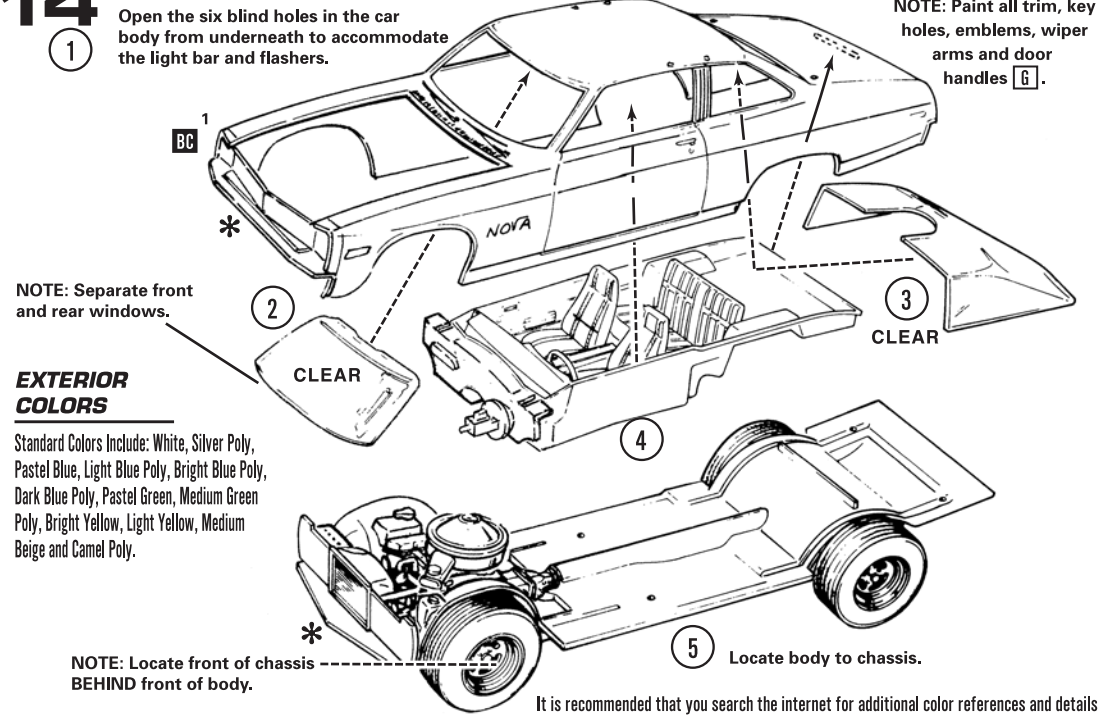
12



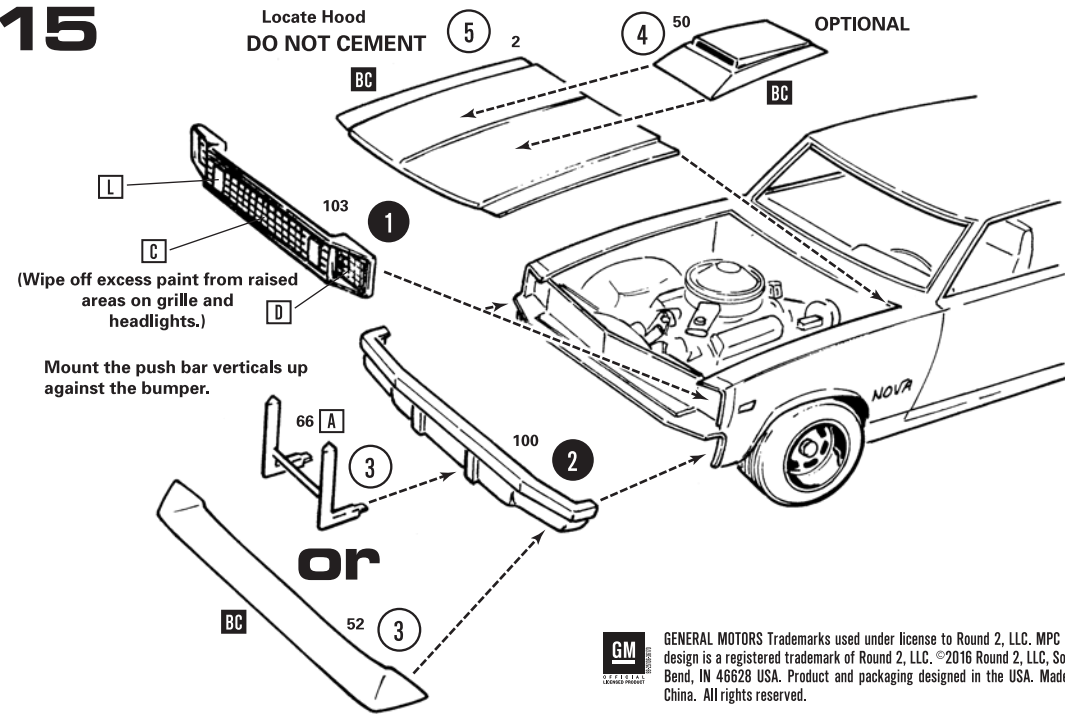
13



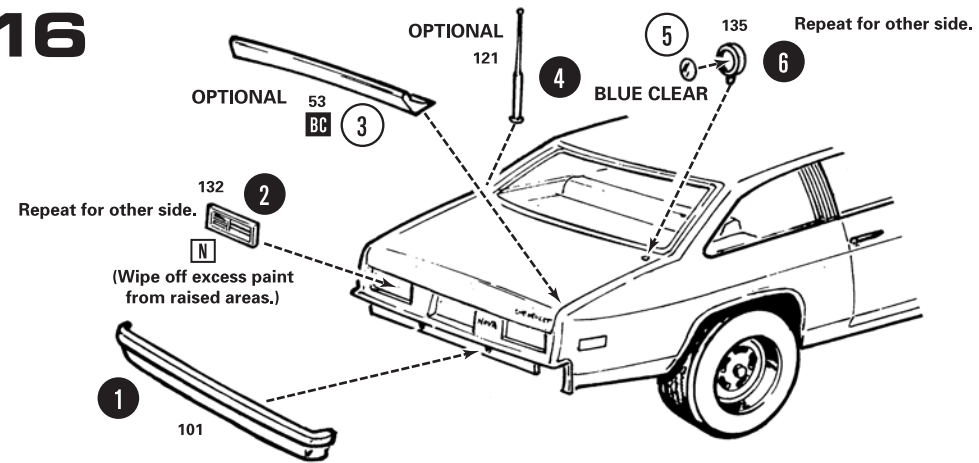
14



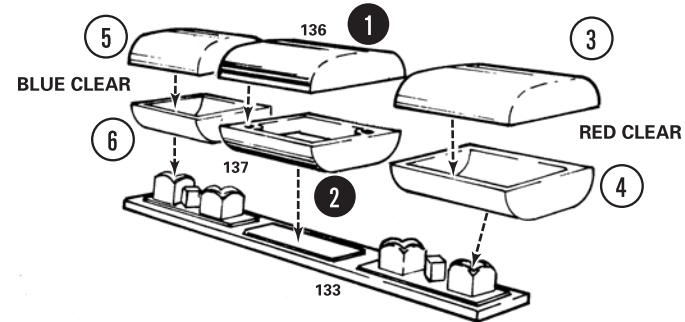
15



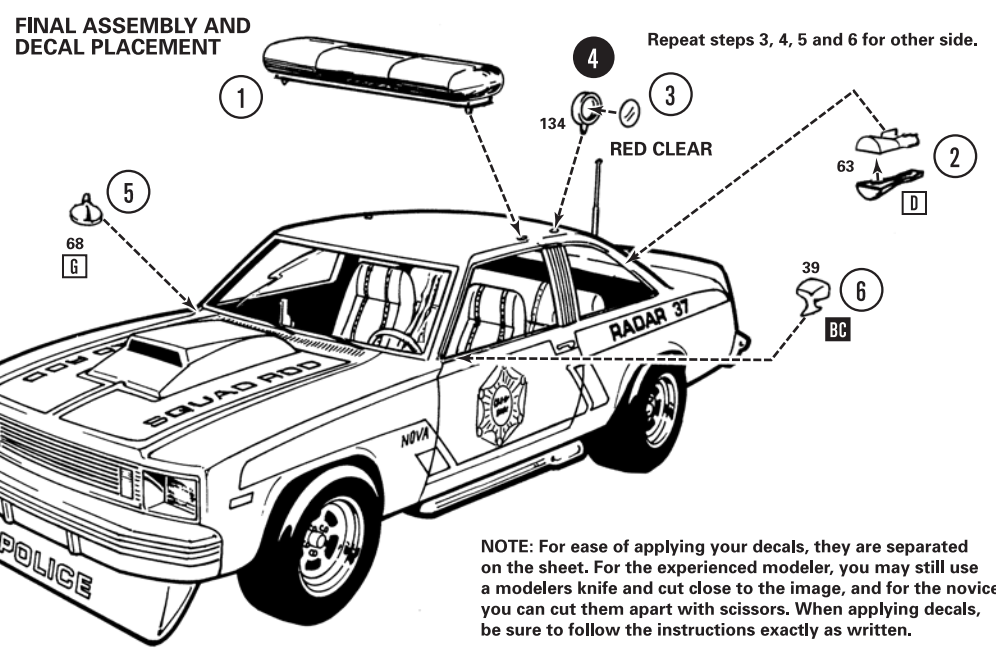
16



17



18



NOTE: For ease of applying your decals, they are separated on the sheet. For the experienced modeler, you may still use a modelers knife and cut close to the image, and for the novice you can cut them apart with scissors. When applying decals, be sure to follow the instructions exactly as written.



GENERAL MOTORS Trademarks used under license to Round 2, LLC. MPC and design is a registered trademark of Round 2, LLC. ©2016 Round 2, LLC, South Bend, IN 46628 USA. Product and packaging designed in the USA. Made in China. All rights reserved.