



HONDA ROAD RACER

READ ASSEMBLY INSTRUCTIONS BEFORE YOU BEGIN

Before you begin building, look over the instructions carefully. Following the procedure given, test-fit parts together without cementing. This way you will be more familiar with the location of parts when it becomes time to use cement.

For removing small parts from the "runners" it is best to use a modelers knife, do not attempt to "twist" them off.

When painting your model it is best to cement all non-chromed accessories to the body and paint the whole unit at one time.

The highest quality styrene plastic goes into the making of each MPC® model. Only paint and cement made for styrene should be used. Before joining parts, trim off excess plastic or "flash". Scrape plating from chromed parts where they are to be joined with other parts. Be careful not to get cement on exposed areas. To join parts, use cement sparingly. Apply cement to very small parts with a toothpick.

You should have no trouble assembling your kit if the instructions are followed properly. The parts are numbered in order of assembly.

PAINT COLORS

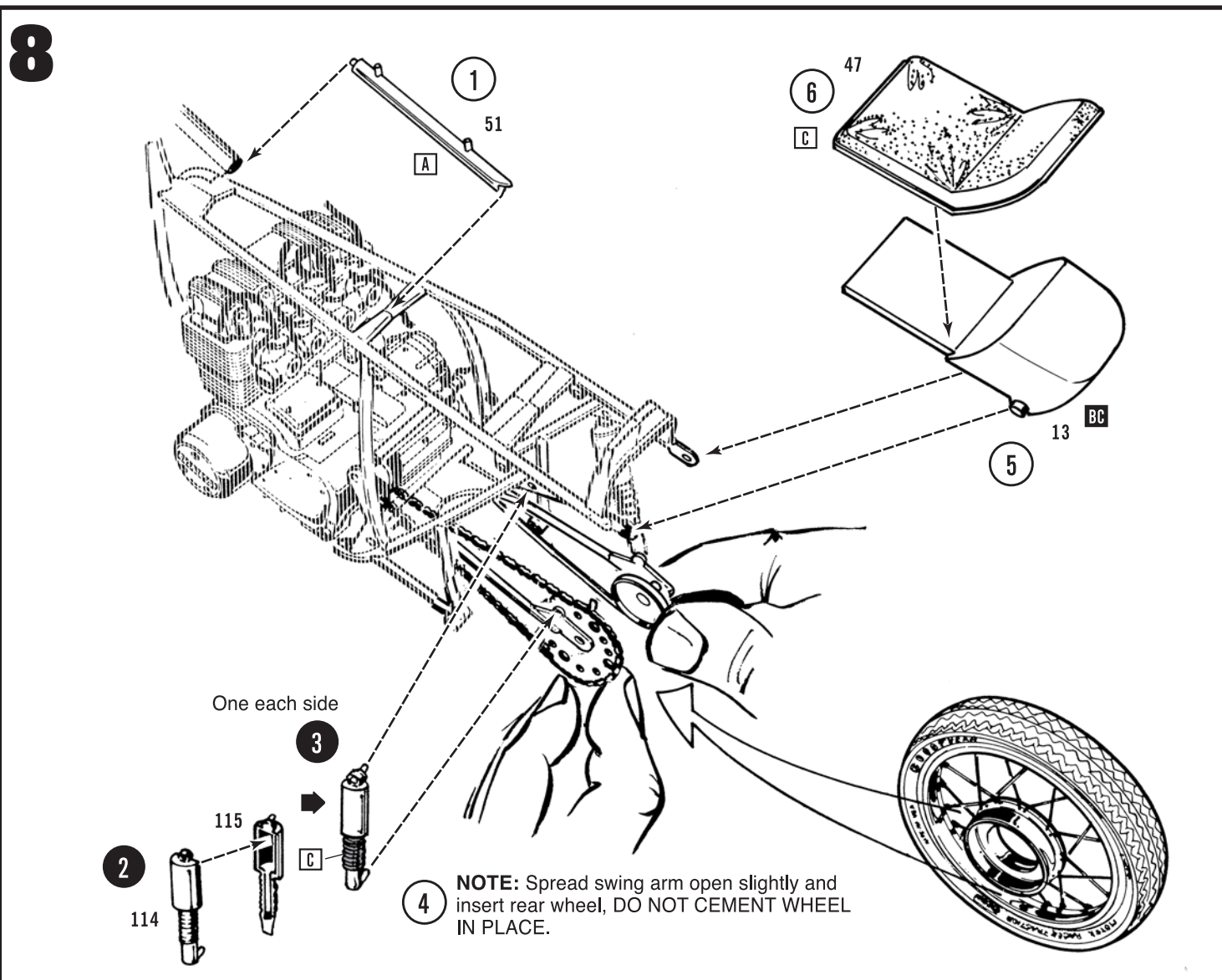
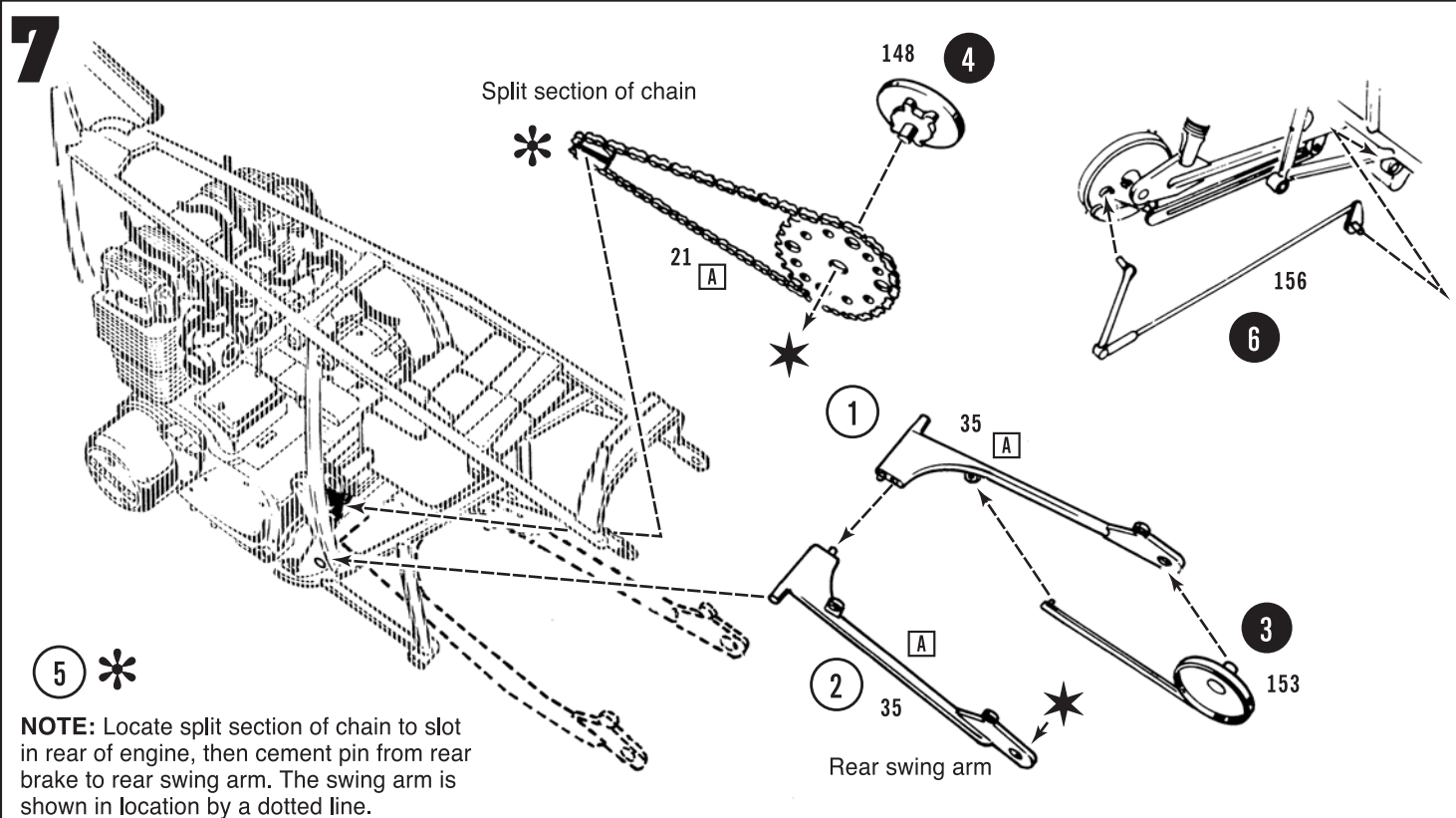
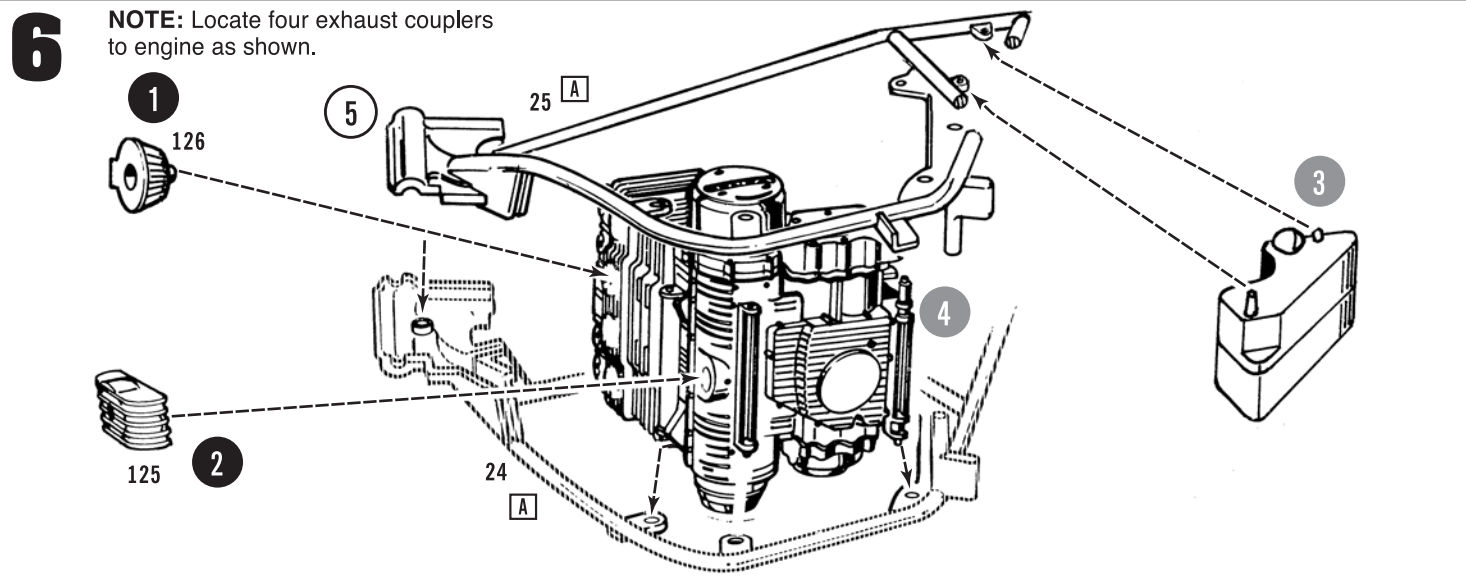
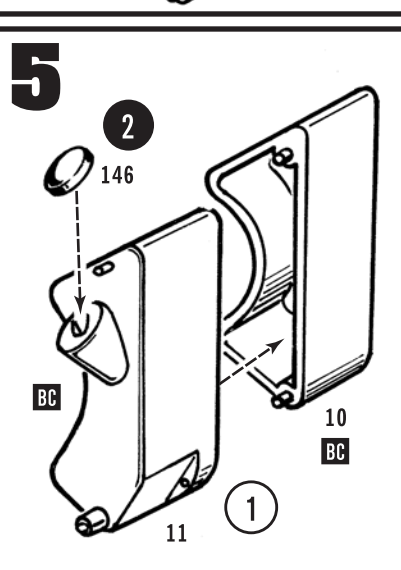
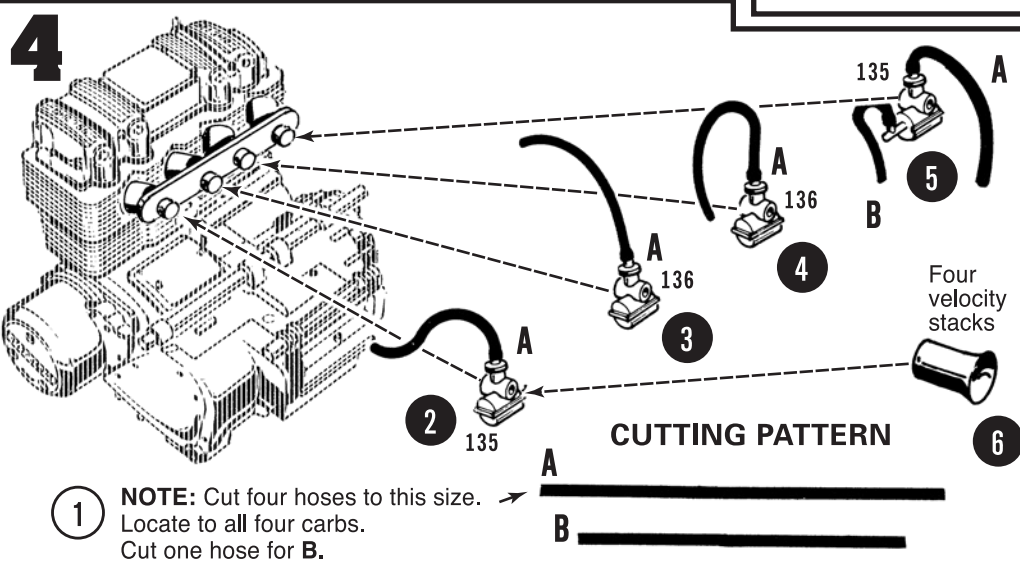
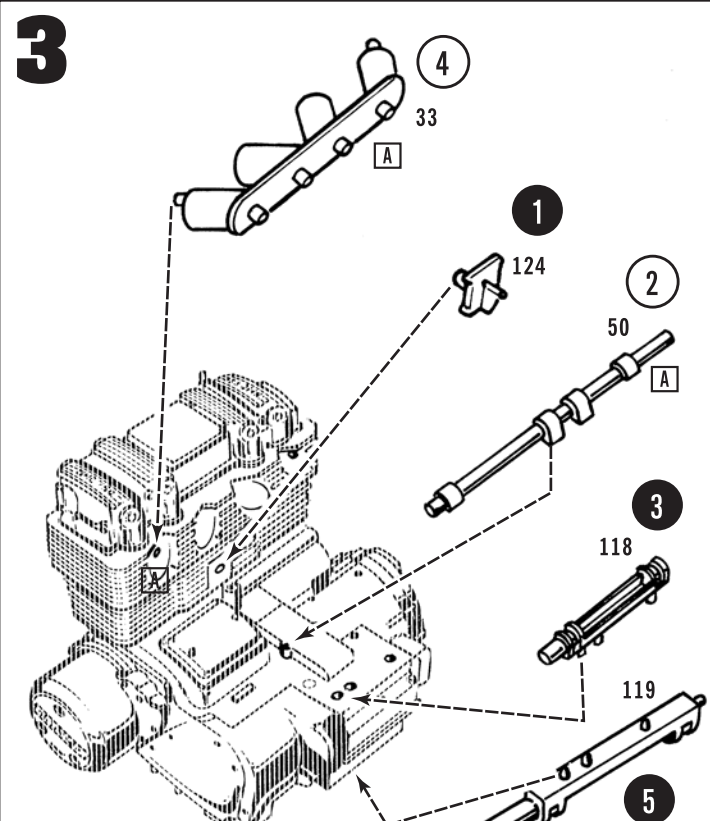
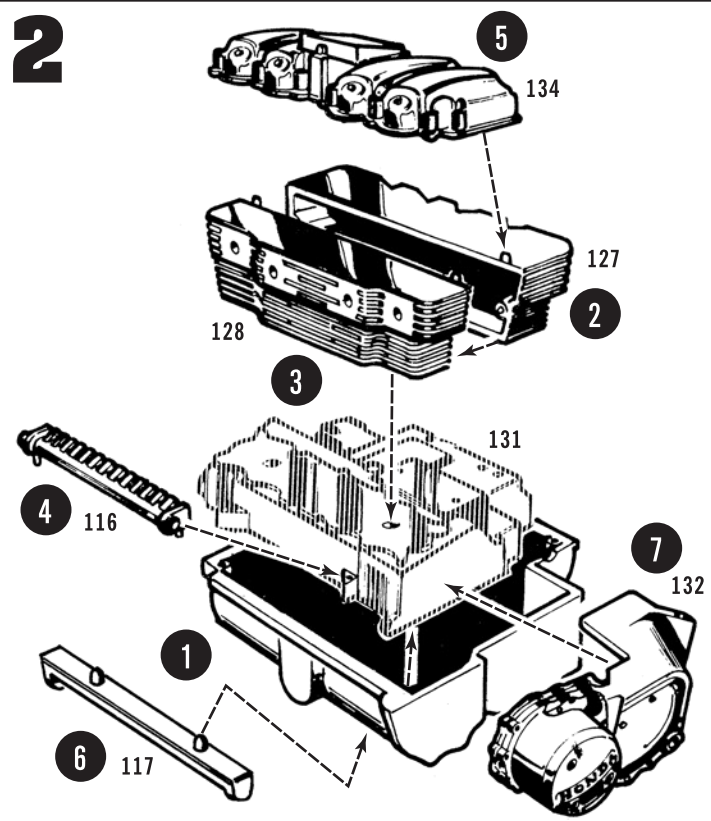
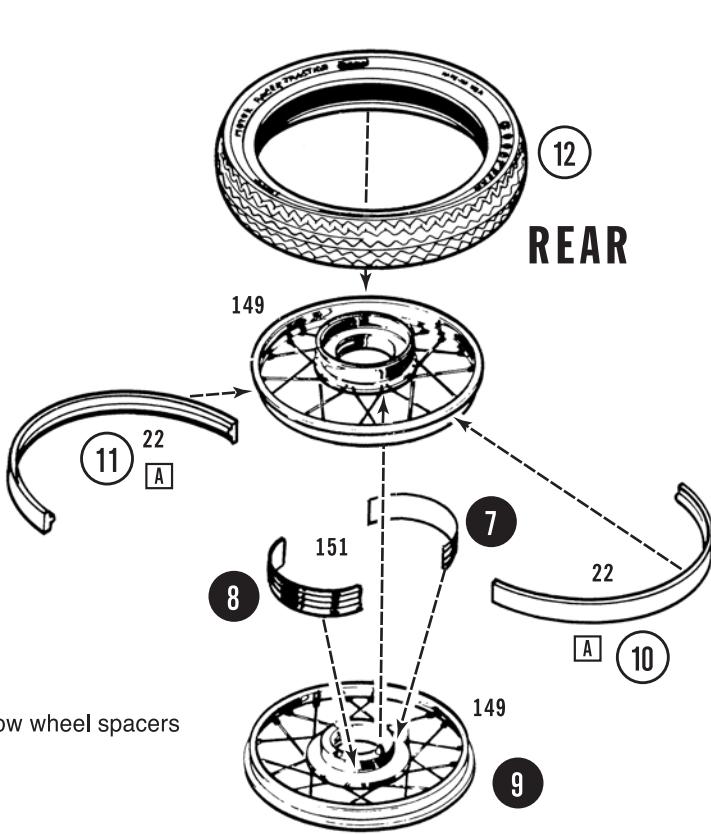
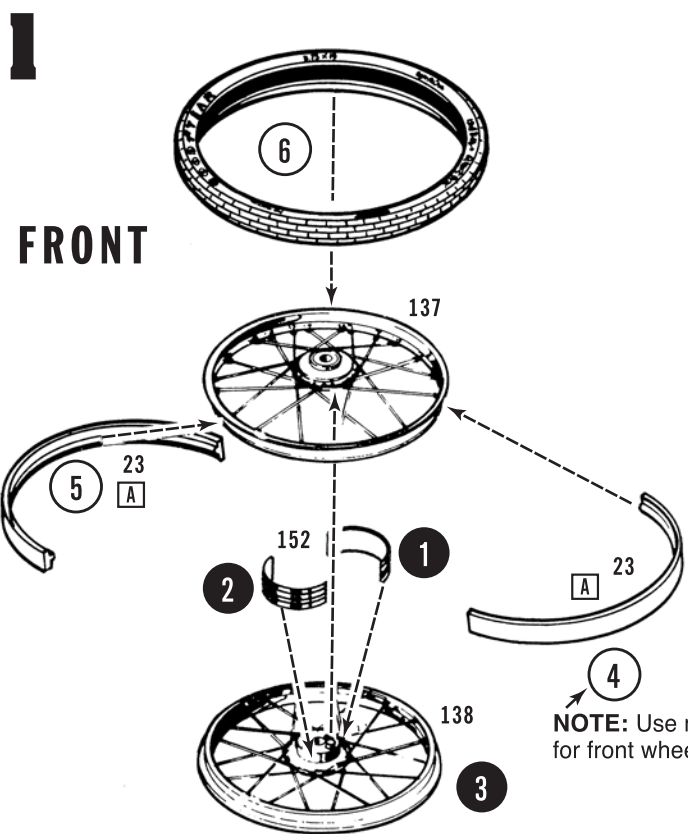
A	Black	Q	Yellow
B	Flat Black	R	Tan
C	Semi-Gloss Black	S	Brown
D	White	T	Lt. Blue
E	Flat White	U	Med. Blue
F	Silver	V	Dark Blue
G	Chrome (Bright Silver)	W	Transparent Blue
H	Aluminum	X	Lt. Green
I	Steel	Y	Dark Green
J	Brass	Z	Gray
K	Gold	AA	Purple
L	Amber	BB	Pink
M	Transparent Amber	BC	Body Color
N	Red	△	Semi-Gloss
O	Transparent Red	▲	Gloss
P	Orange	▲	Metallic

Please reference the box images and/or search online for further painting details.

FOLLOW THE NUMBERS STEP-BY-STEP

Non plated parts **7** Plated parts **11** Assembled part **3**

Designed, manufactured and distributed by Round 2, LLC. Honda®, the Wing logo®, Honda vehicle model names and their trade dress are trademarks of Honda Motor Co., Ltd. used under license from American Honda Motor Co., Inc. Many Honda vehicle model names and trade dress may be seen at www.honda.com. All rights reserved. Goodyear (and wing foot design) and Eagle are trademarks of The Goodyear Tire & Rubber Company, Akron, Ohio USA used under license by Round 2, LLC. Other names and trademarks used under license to Round 2, LLC or by permission MPC and design is a registered trademark of Round 2, LLC. ©2016 Round 2, LLC, South Bend, IN 46628 USA. Product and packaging designed in the USA. Made in China. All rights reserved.



9

3

NOTE: Locate four lines to harness as shown.

2

1

CUTTING PATTERN
Cut length as shown.

NOTE: The wiring harness does not locate to the frame; it "floats" and is held in place by carburetor lines.

10

1

COIL

34

A

CUTTING PATTERN

E

Cut (4) hoses this size.

2

3

4

NOTE: Connect lines to coil and locate coil through frame directly under top fork bridge. Connect remaining two spark plug lines and cement coil to center of frame.

11

One each side

1

147

12

1

2

101

100

13

1

2

144

145

One each side

14

NOTE: Locate pins on front disc brake calipers to holes on inside of front forks.

3

1

2

NOTE: Spread forks apart carefully and snap tire in place.

15

2

123

113

4

3

6

5

1

CUTTING PATTERN

Cut (2) hoses this size.

One each side

17

One each side

3

32

A

2

4

1

Clear

10

40

C

D

F

6

5

8

G

6

7

Cut length as shown.

CUTTING PATTERN

9

H

16

29

A

2

Cement here only

3

46

A

45

A

4

1

Do not cement

18

4

48

C

16

2

BC

12

3

BC

1

161

B

NOTE: Locate hose to pin on gas tank petcock.

19

One each side

2

107

3

109

4

110

108

1

One each side

20

2

121

133

1

Modify part to look like this

27

C

4

3

21

1

Modify part to look like this

2

27

C

22

2

1

CUTTING PATTERN
Cut length as shown.

3

NOTE: Install hose into hole.

1

NOTE: Locate right fairing the same way as left fairing and then cement clear windscreen as shown.

2

3

Clear

14 & 15

14 & 15

BC

One each side

7

NOTE: Locate jack stand to rear axle between chain and exhaust pipes.

6

17

19

5

18

4

20

Assemble and paint **A** as a unit

REAR TIRE

Locate jack stand here and here (Do not cement).