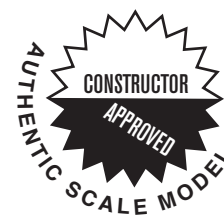


# VENDING MACHINE



M871-200



KNIFE



## TWEEZERS



CEMENT



## IMPORTANT!

Before you begin building, look over the instructions carefully. Following the procedure given, test-fit parts together without cementing, after you've decided what version to build. This way you will be more familiar with the location of parts when it becomes time to use cement.

- For removing small parts from the "runners" it is best to use a modelers knife, do not attempt to "twist" them off.

The highest quality styrene plastic goes into the making of each MPC model. Only paint and cement made for styrene should be used. Before joining parts, trim off excess plastic or "flash." Scrape

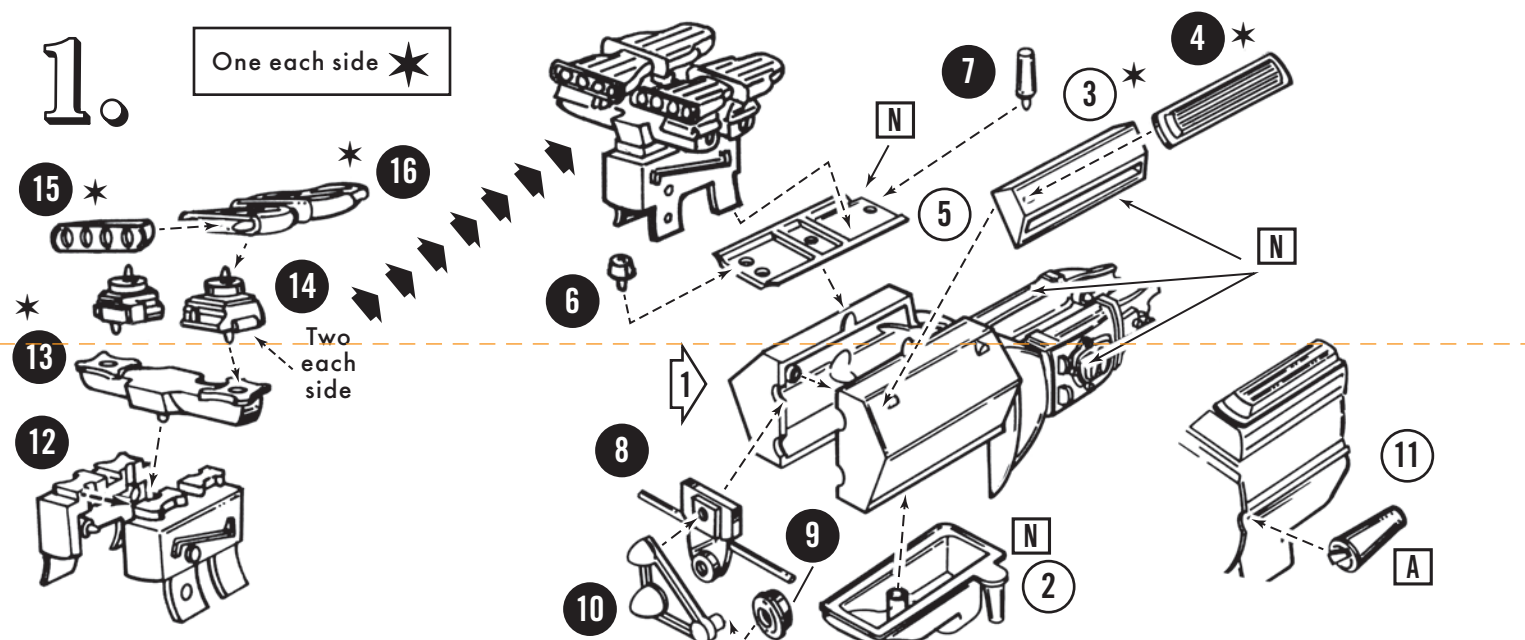
plating from chromed parts where they are to be joined with other parts. Be careful not to get cement on exposed areas. To join parts, use cement sparingly. Apply cement to very small parts with a toothpick.

When painting your model it is best to cement all non-chrome accessories to the body and paint the whole unit at one time.

You should have no trouble assembling your kit if the instructions are followed properly. The parts are numbered in the order of assembly.

**SYMBOLS:**

plated parts — 2 1 — Begin with: — 1 2 — non-plated parts

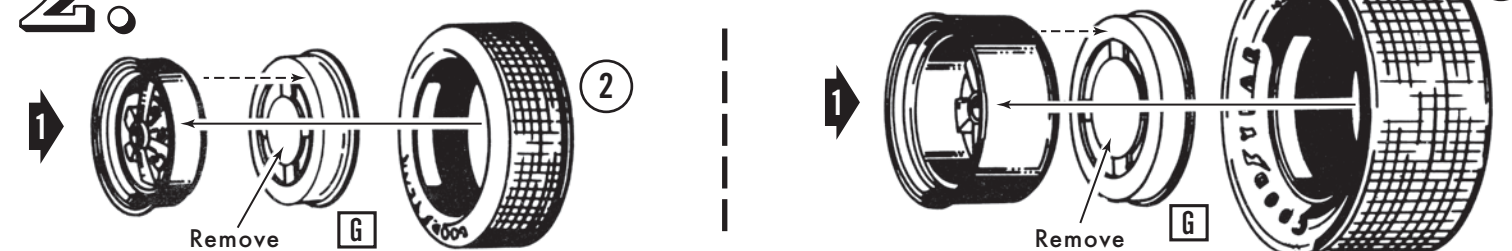


## 2.

# FRONT

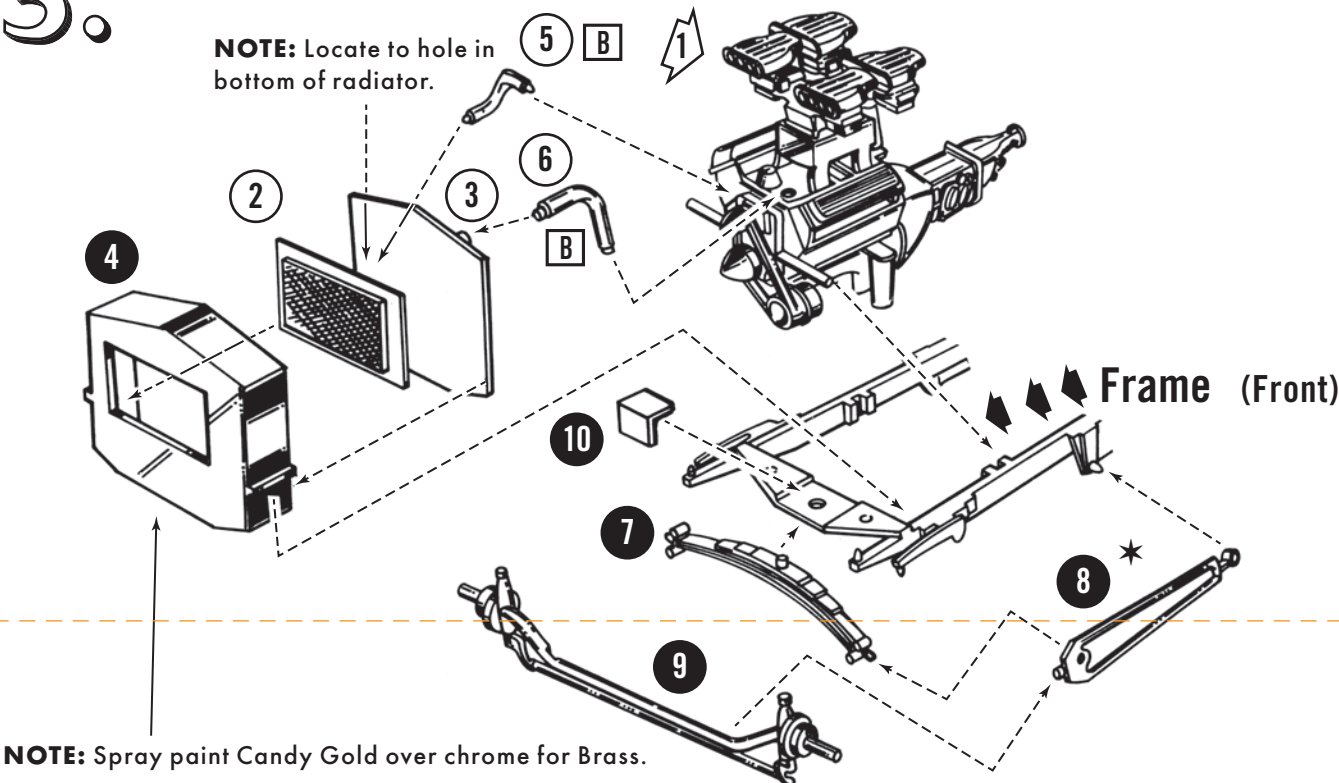
Complete rim assembly, allow to dry, then mount tire over assembled rim.

## REAR

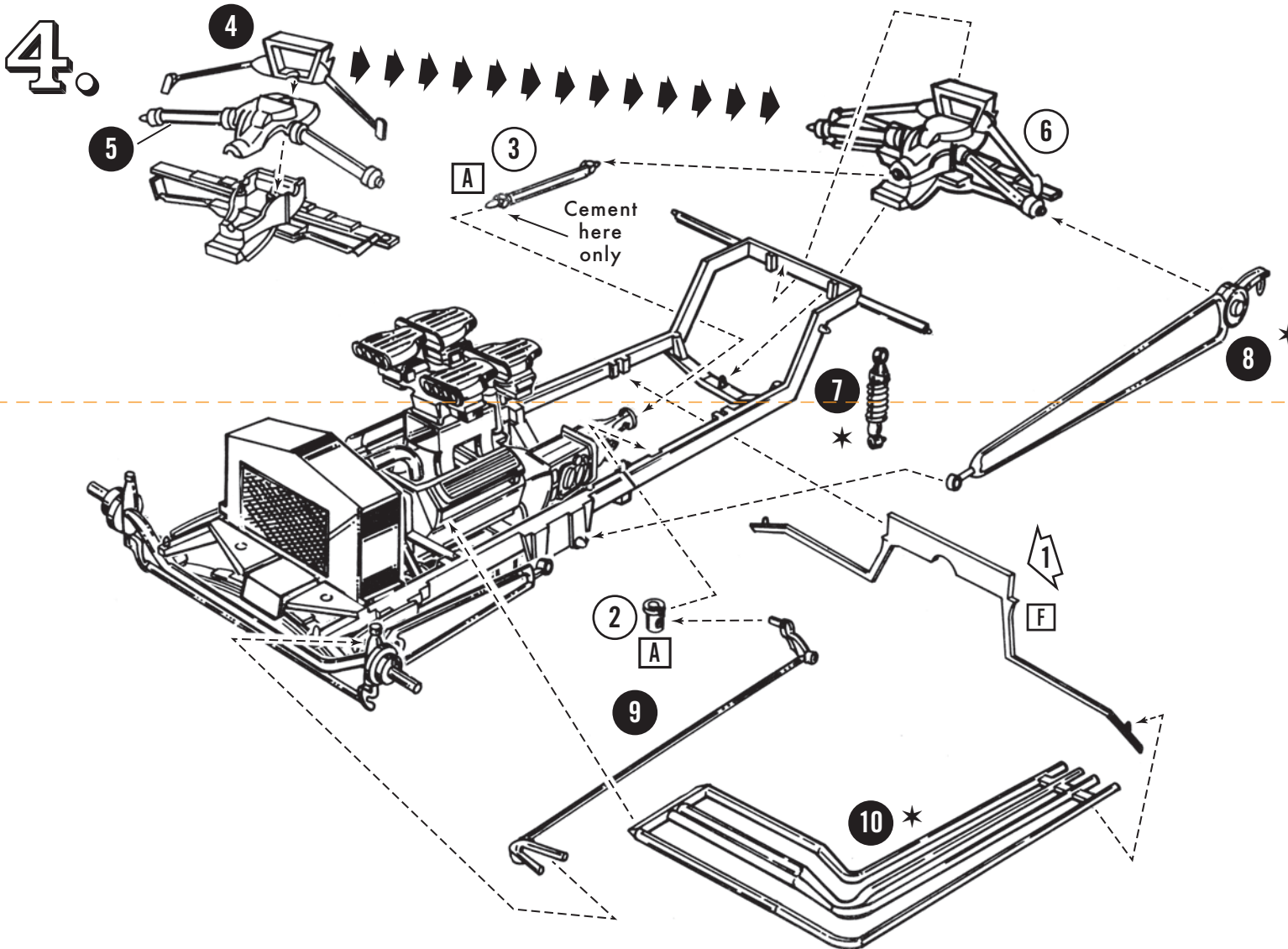




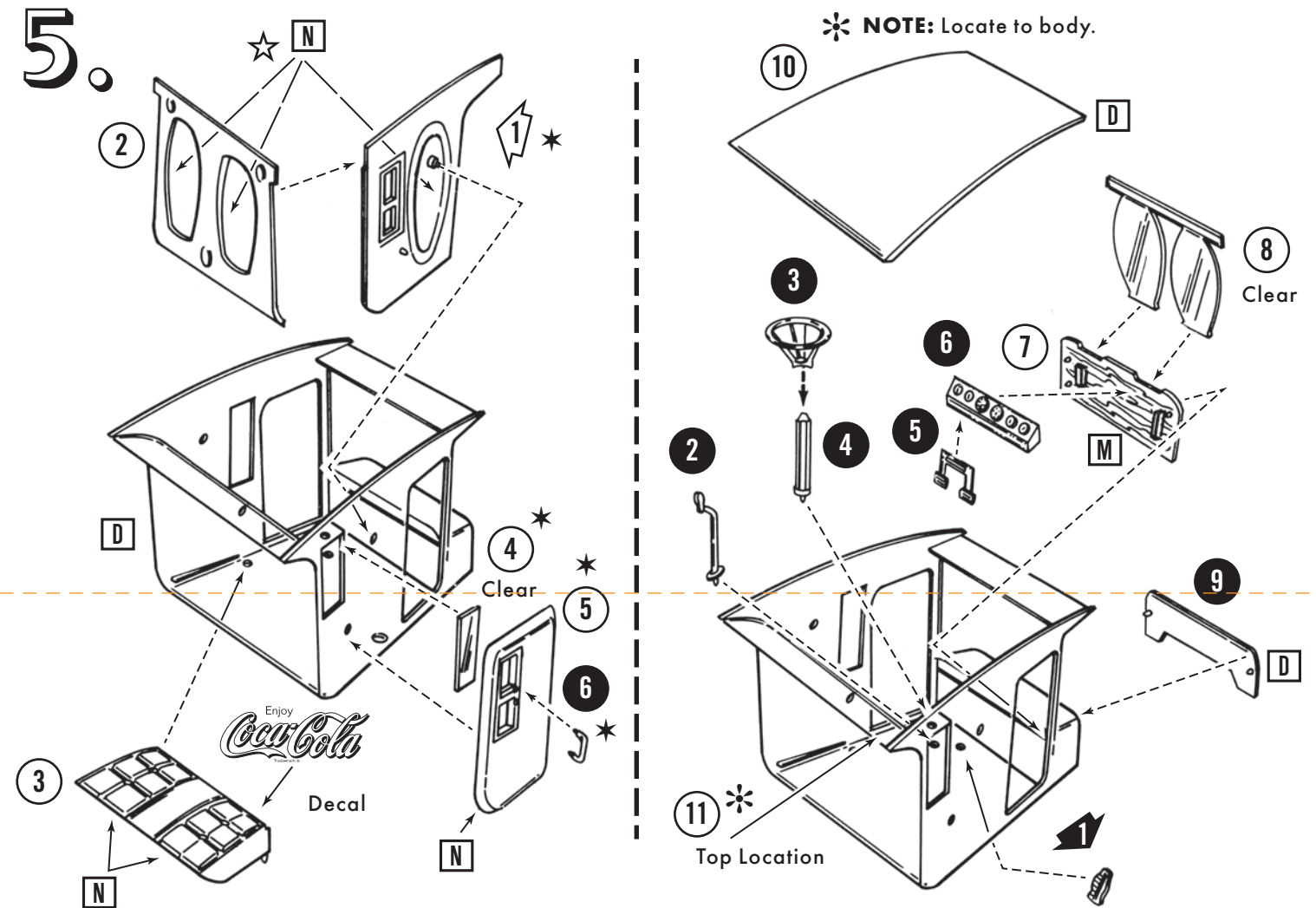
3.



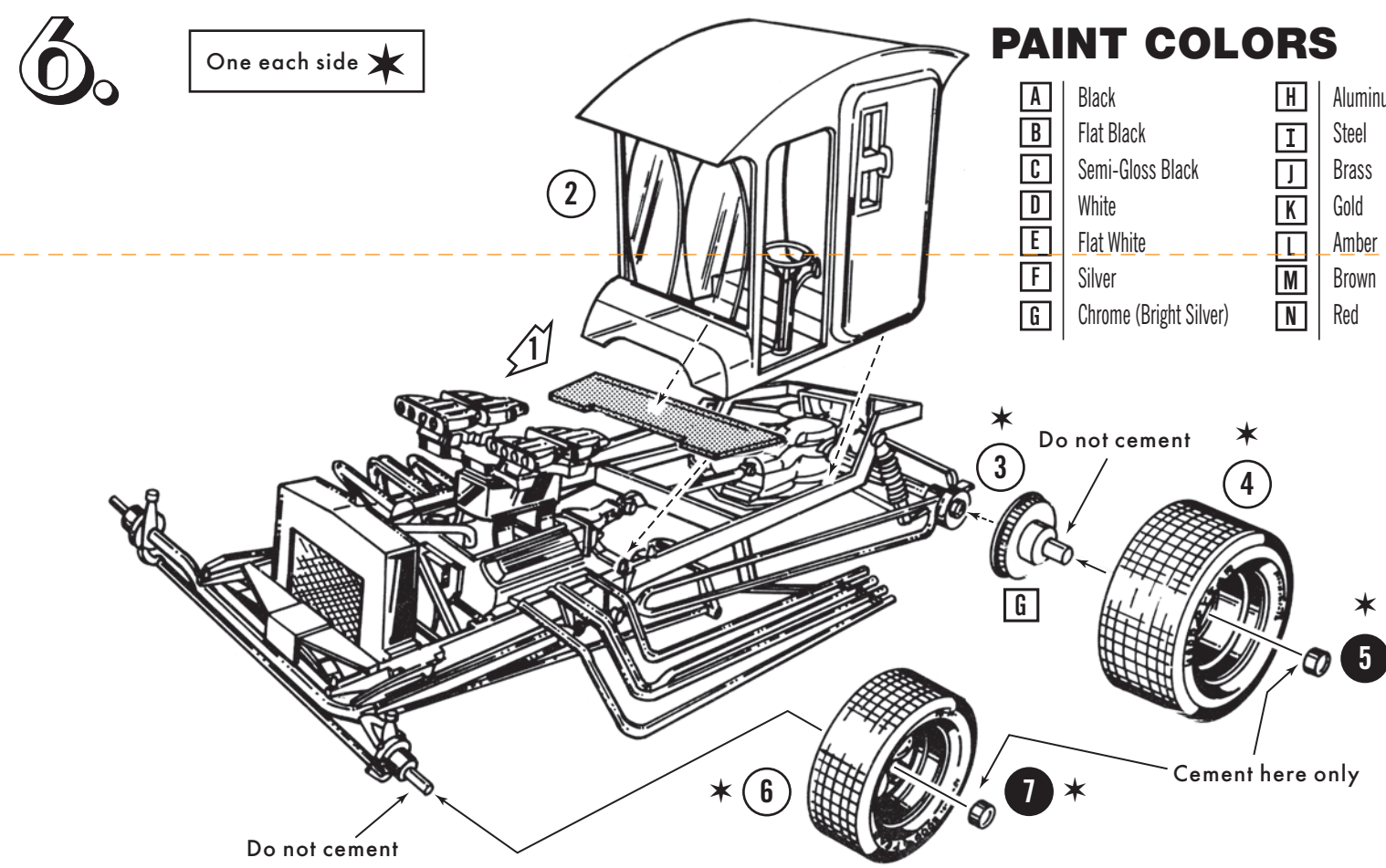
4.



5.



6.



**PAINT COLORS**

A	Black	H	Aluminum
B	Flat Black	I	Steel
C	Semi-Gloss Black	J	Brass
D	White	K	Gold
E	Flat White	L	Amber
F	Silver	M	Brown
G	Chrome (Bright Silver)	N	Red