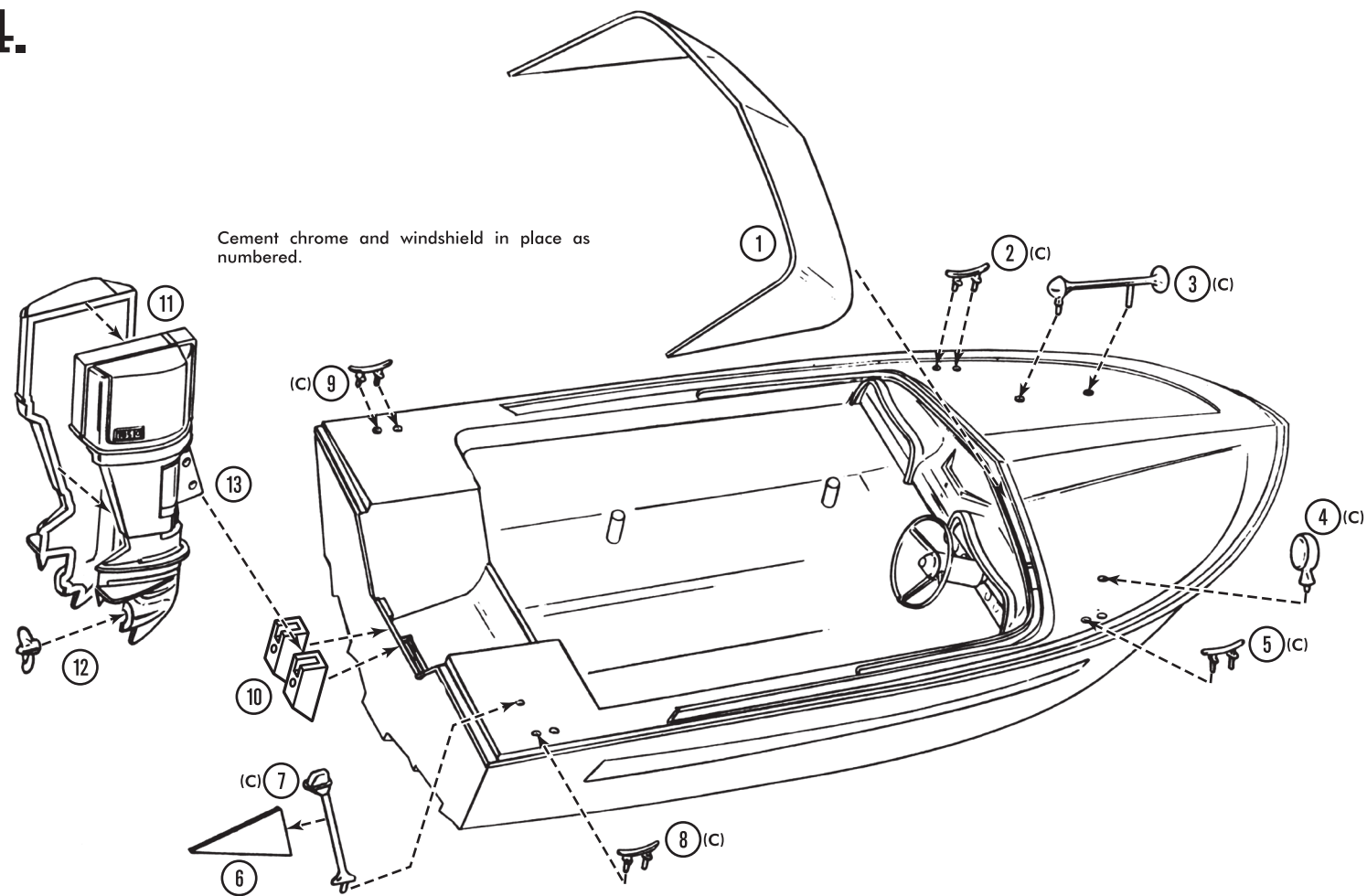


4.

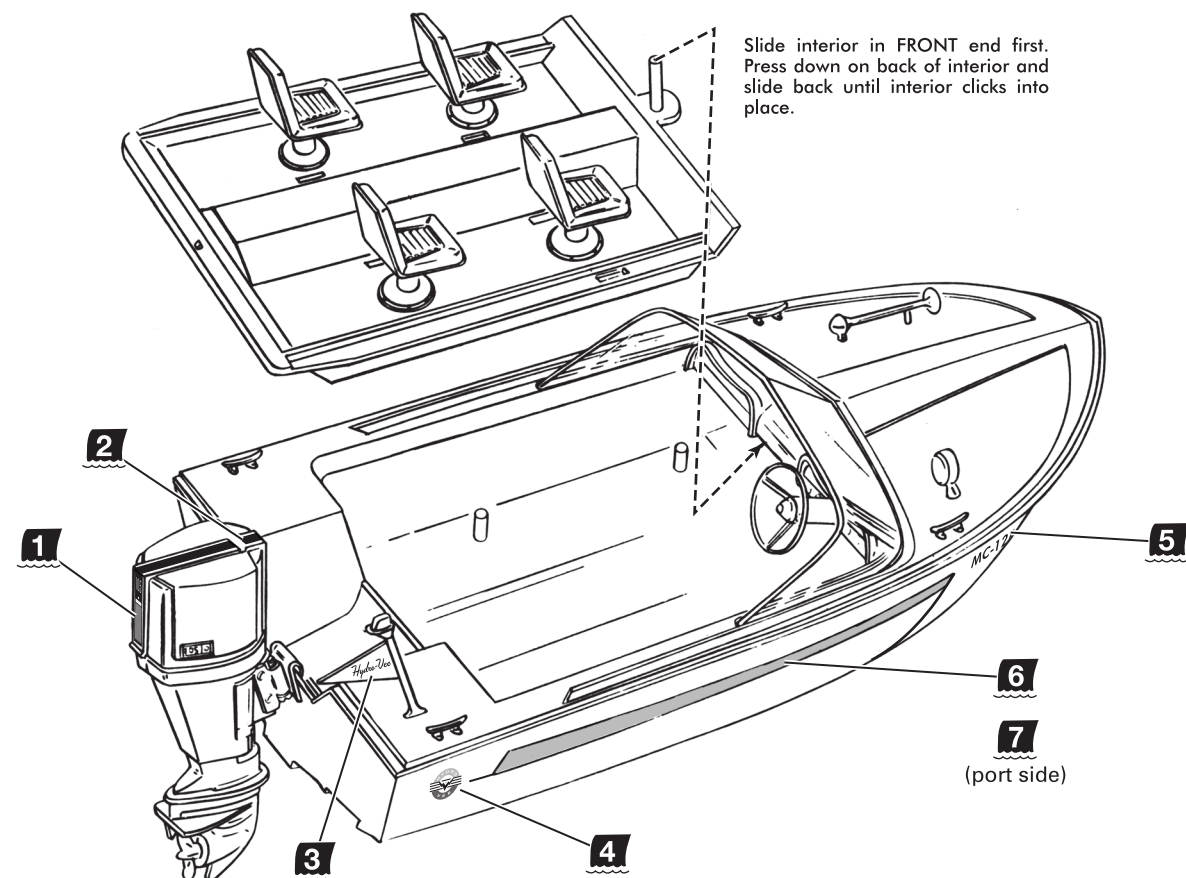


HYDRO-VEE BOAT KIT

M883-200



5.

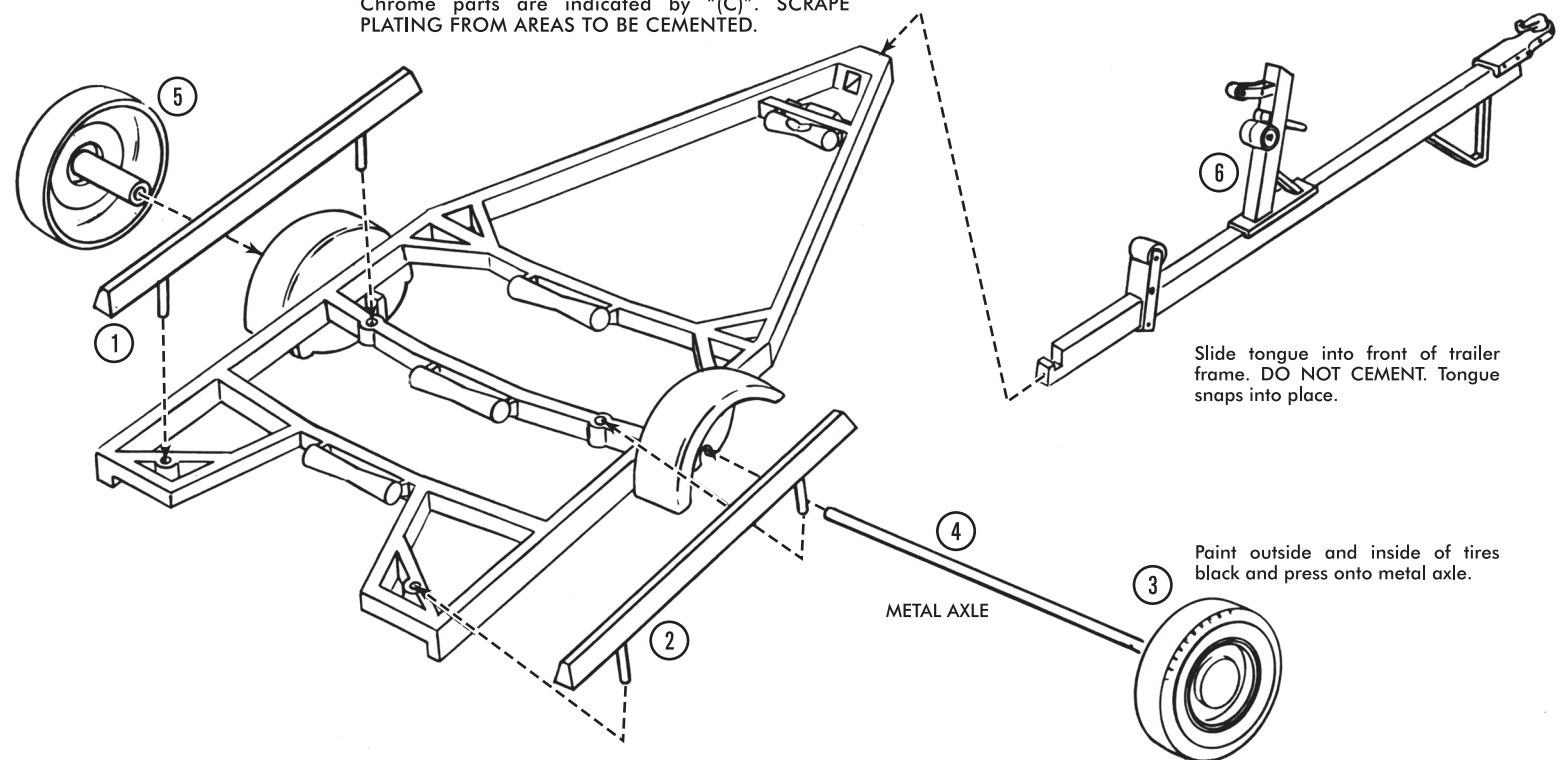
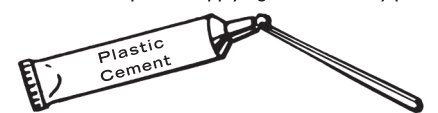


1.

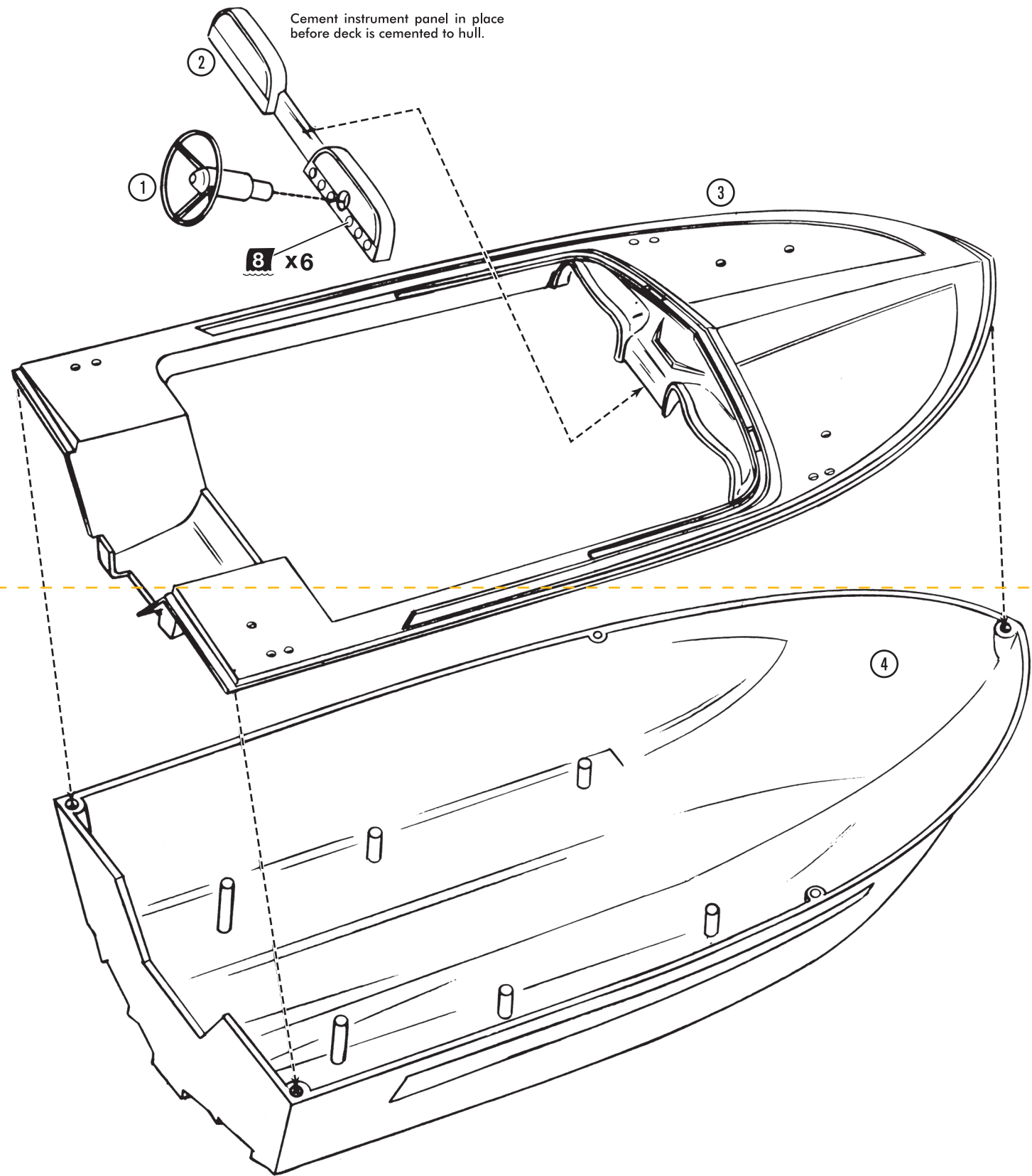
PLEASE READ INSTRUCTIONS CAREFULLY

The parts for the Hydro-Vee Boat and trailer are numbered in order of their assembly. Use only paint made and cement recommended for styrene plastic. Chrome parts are indicated by "(C)". SCRAPE PLATING FROM AREAS TO BE CEMENTED.

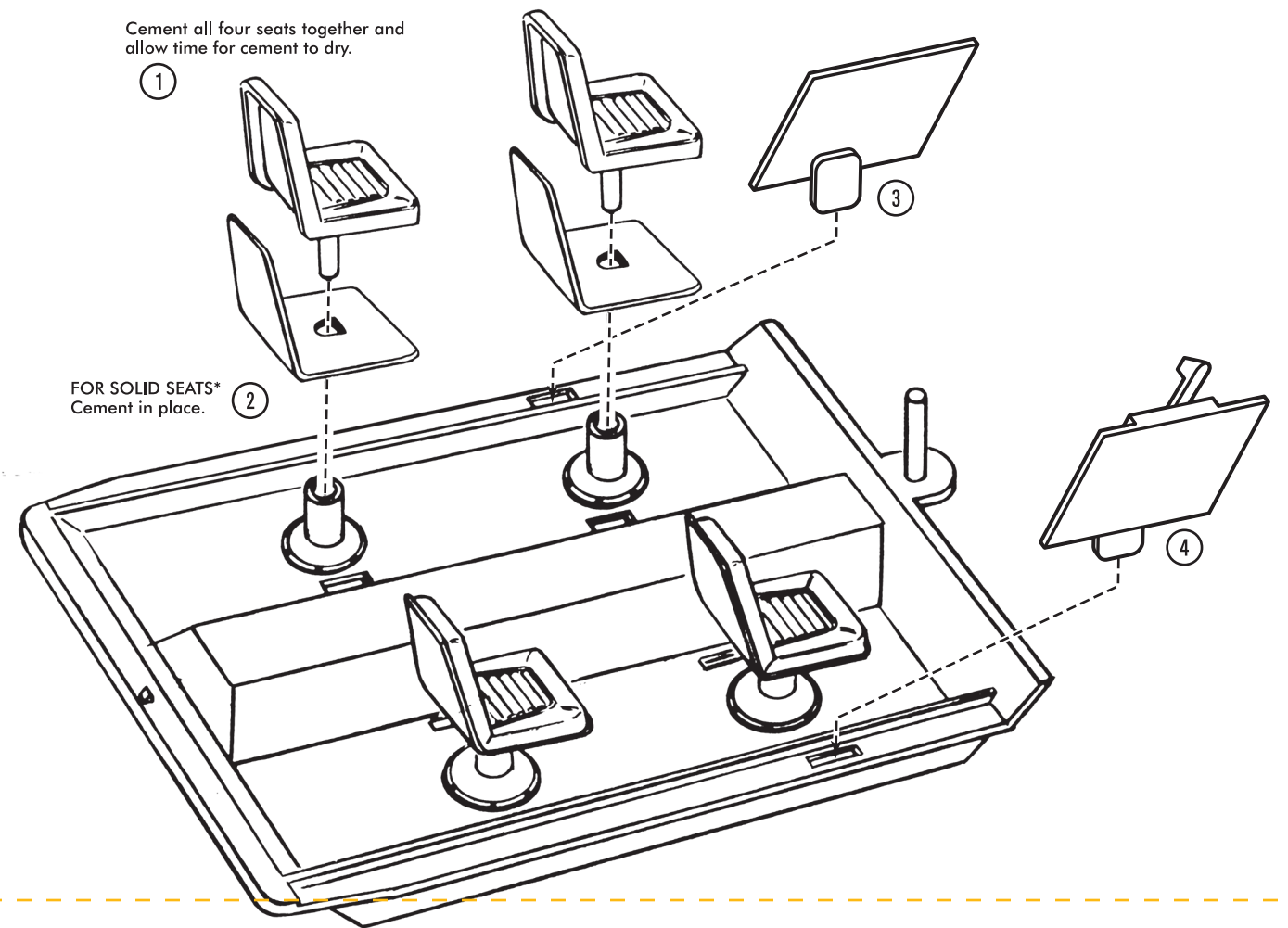
NOTE: Use toothpick for applying cement to tiny parts.



2.



3.



***NOTE:** FOR MOVEABLE SEATS heat seal the seats, place seat in position and turn interior upside down. Heat a screw driver hot enough to melt plastic and press into seat pin long enough to flatten pin and lock seat into place. Repeat for all four seats.

