



IMPORTANT: READ THIS FIRST!

Before you begin building, look over the instructions carefully. Following the procedure given, test-fit parts together without cementing. This way you will be more familiar with the parts when it becomes time to use the cement.

For removing small parts from the “runners”, it is best to use a modelers knife, do not attempt to twist them off.

The highest quality styrene plastic goes into the making of each MPC® model. Only paint and cement made for styrene should be used. Before joining parts, trim off excess plastic or "flash." Scrape plating from chromed parts where they are to be joined with other parts. Be careful not to get cement on exposed areas. To join parts, use cement sparingly. Apply cement to very small parts with a toothpick.

When painting your model, it is best to cement all non-chromed accessories to the body and paint the whole unit at one time.

You should have no trouble assembling your kit if the instructions are followed.

ASSEMBLY SEQUENCE (0)

ASSEMBLY SEQUENCE (PLATED PART)

PART NUMBER 37

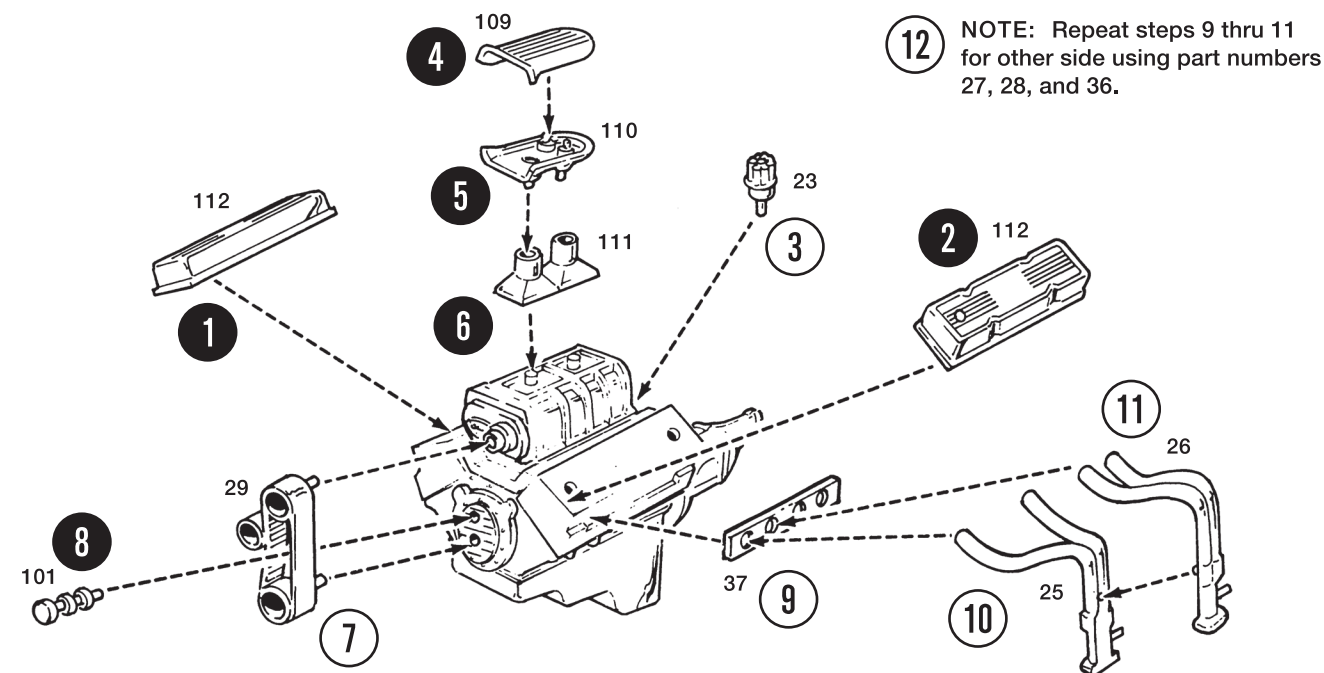
DECAL NUMBER 0

CEMENT ----->

DO NOT CEMENT

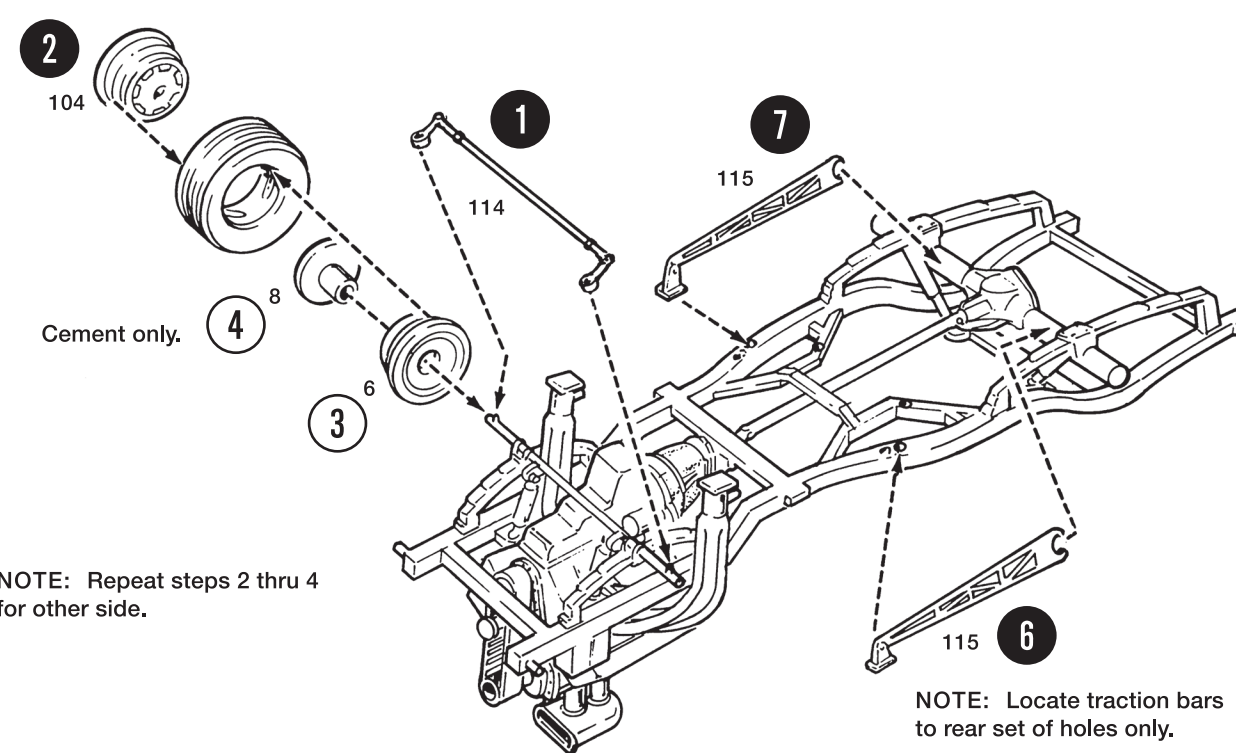


2



12 NOTE: Repeat steps 9 thru 11 for other side using part numbers 27, 28, and 36.

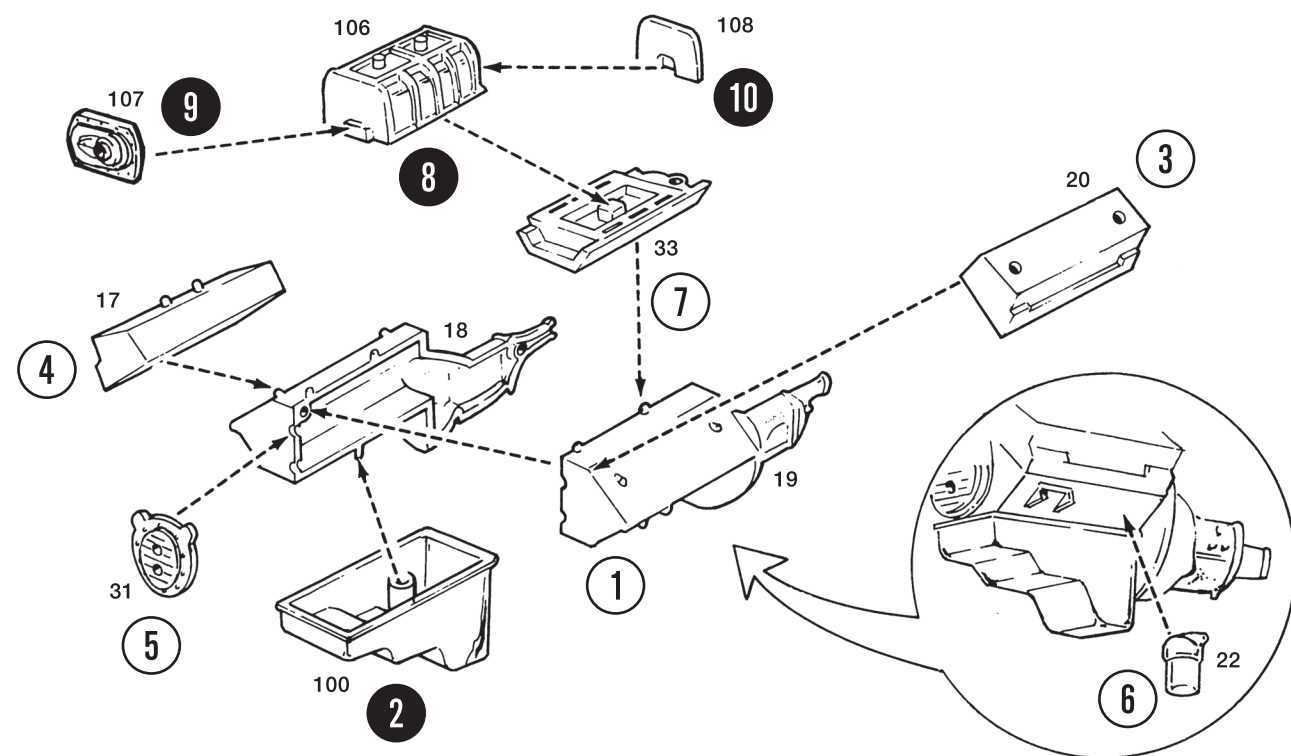
4



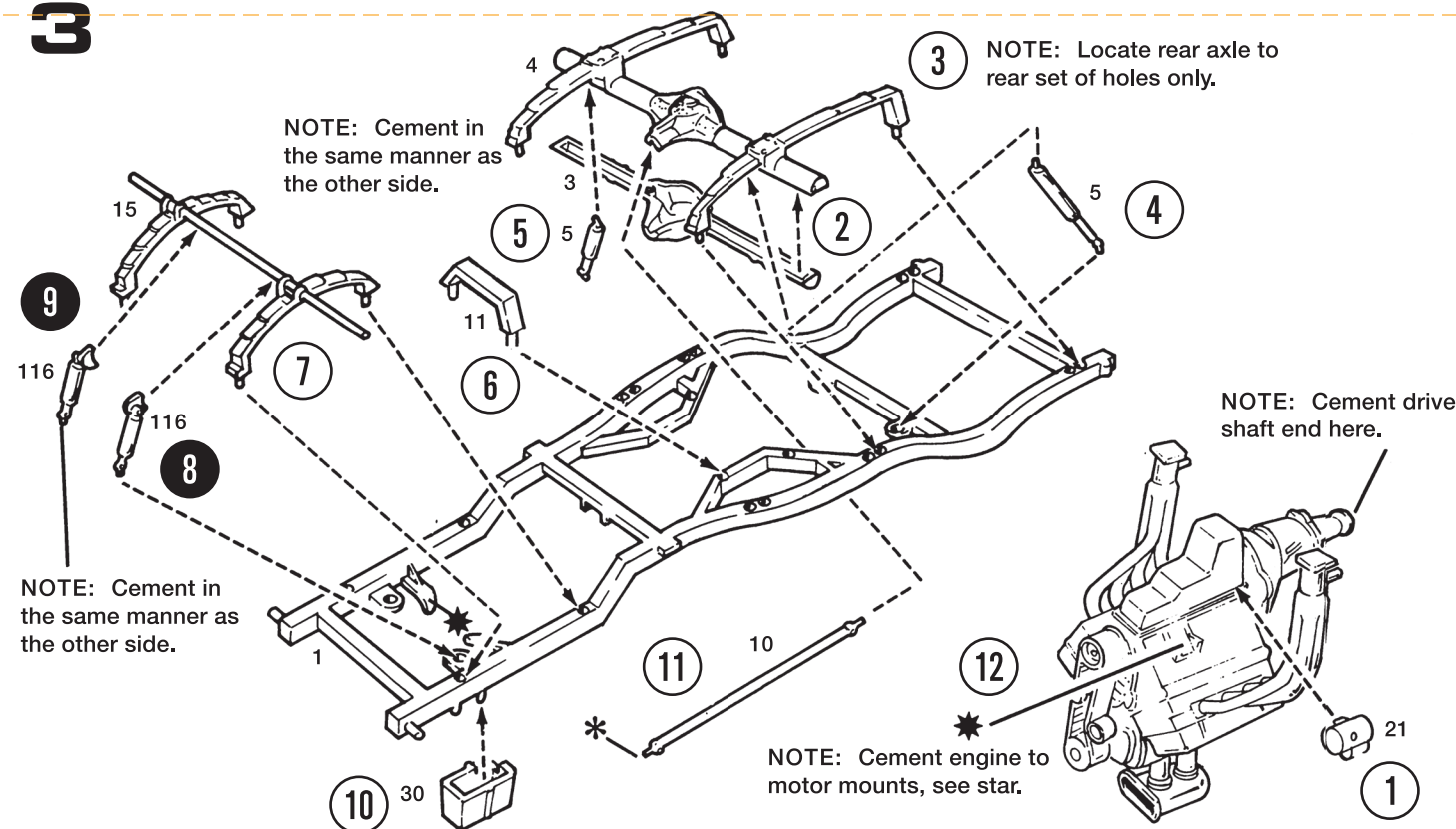
5 NOTE: Repeat steps 2 thru 4 for other side.

NOTE: Locate traction bars to rear set of holes only.

1



3



NOTE: Locate rear axle to rear set of holes only.

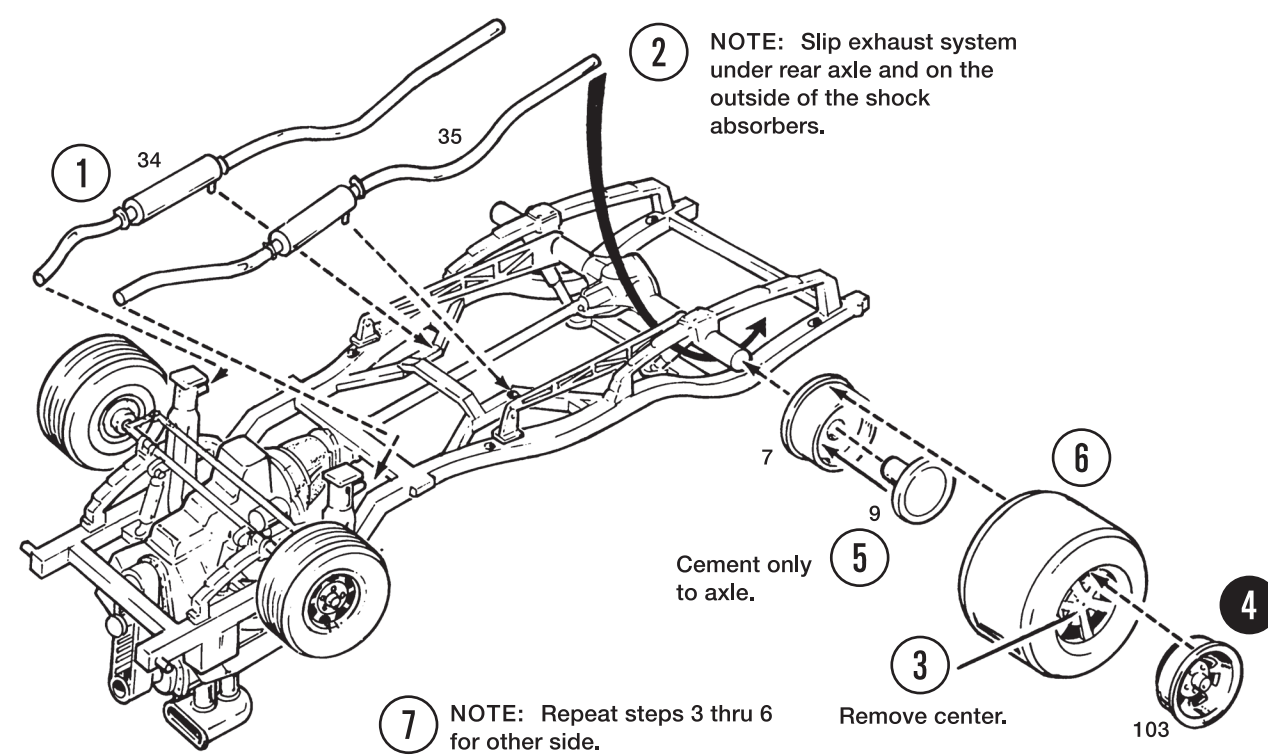
NOTE: Cement in the same manner as the other side.

NOTE: Cement in the same manner as the other side.

NOTE: Cement drive shaft end here.

NOTE: Cement engine to motor mounts, see star.

5



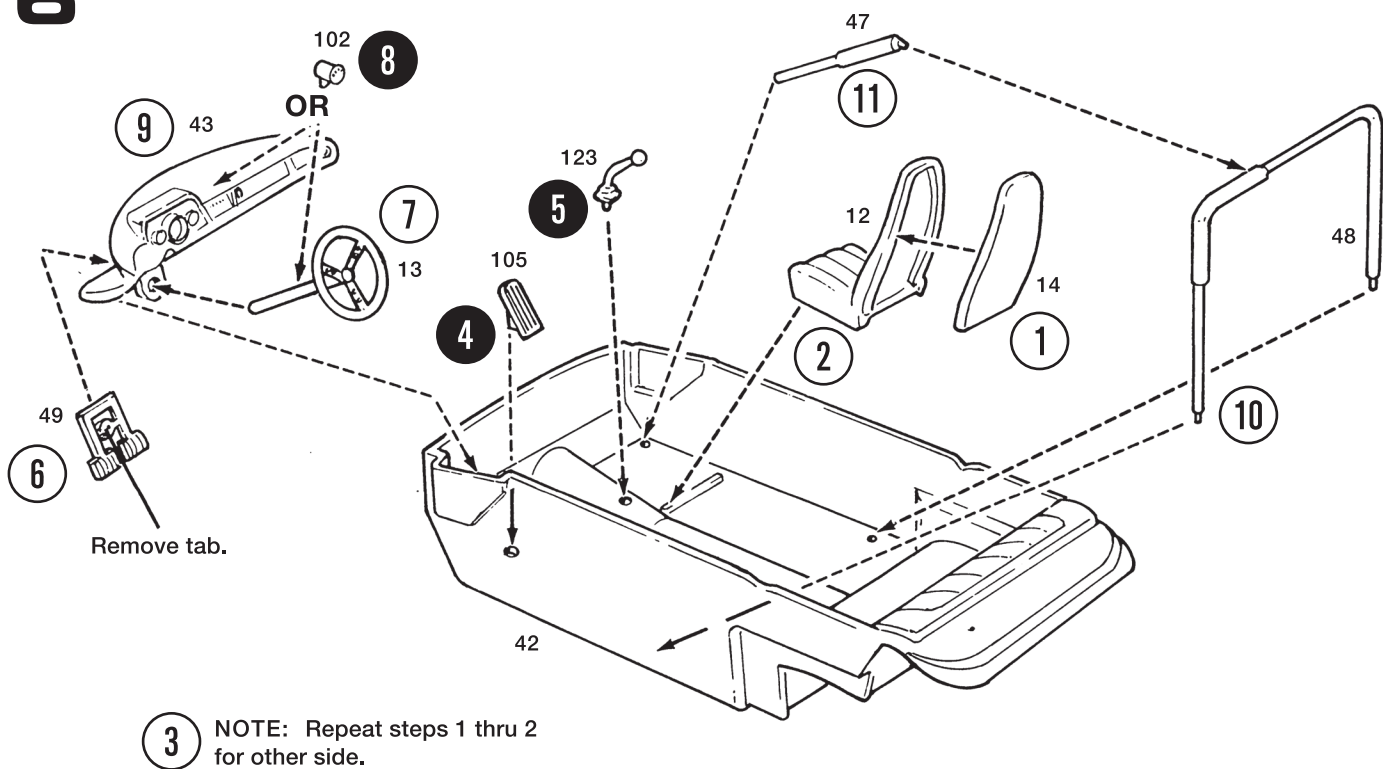
② NOTE: Slip exhaust system under rear axle and on the outside of the shock absorbers.

Cement only
to axle.

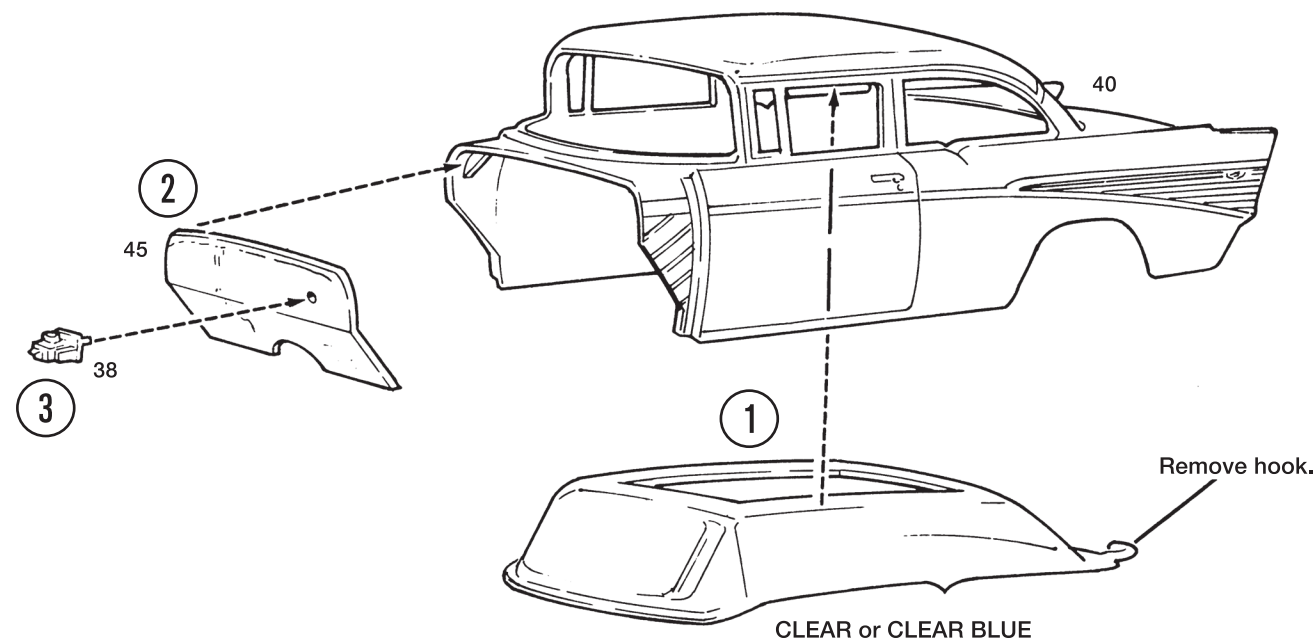
Remove center.

7 NOTE: Repeat steps 3 thru 6 for other side.

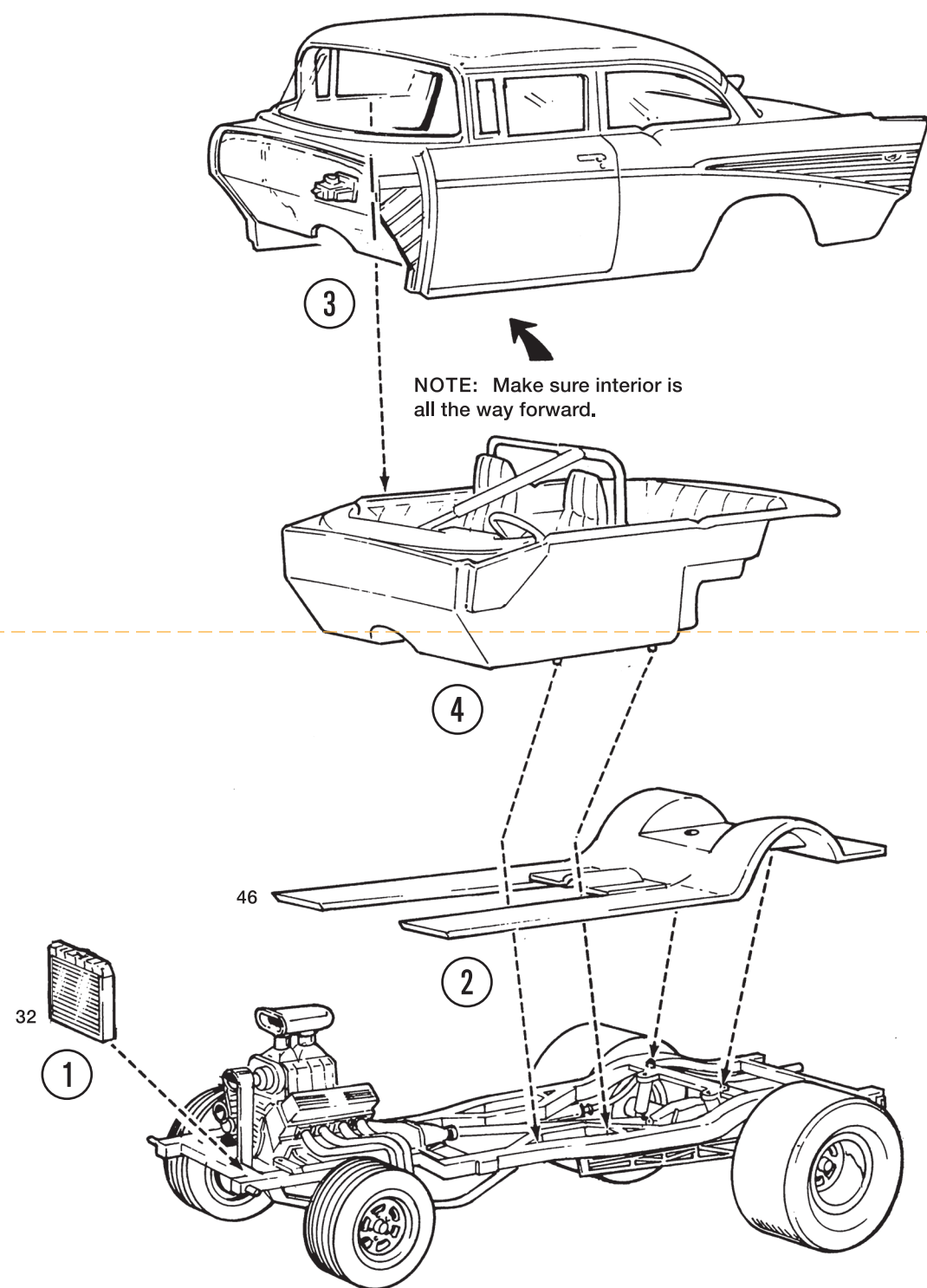
6



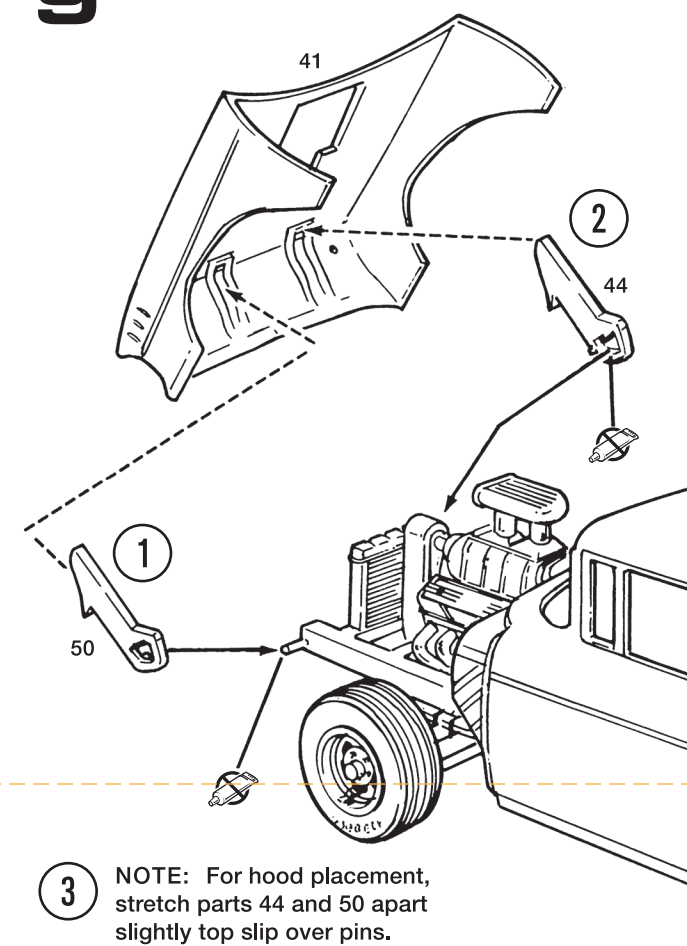
7



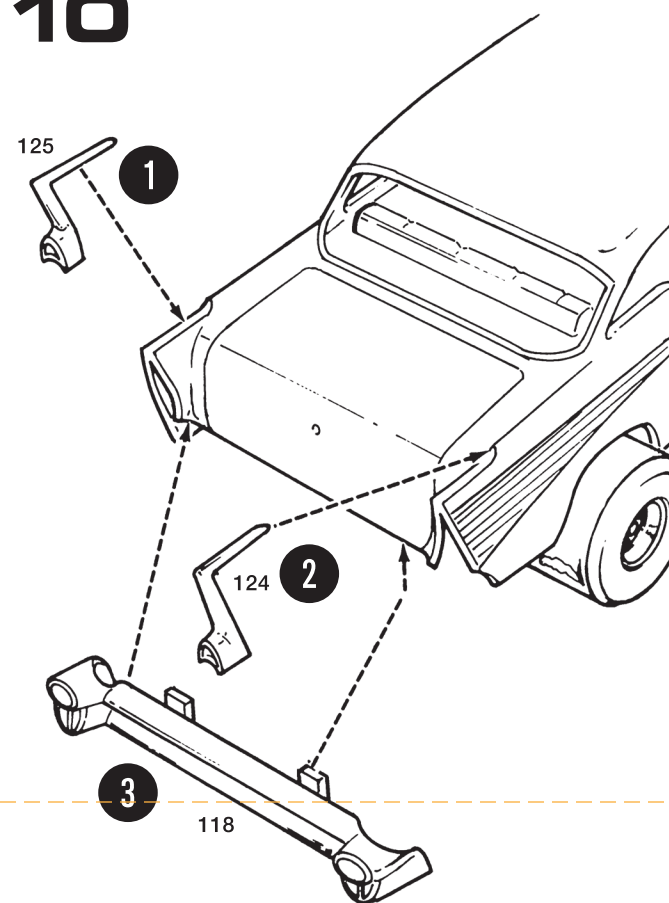
8



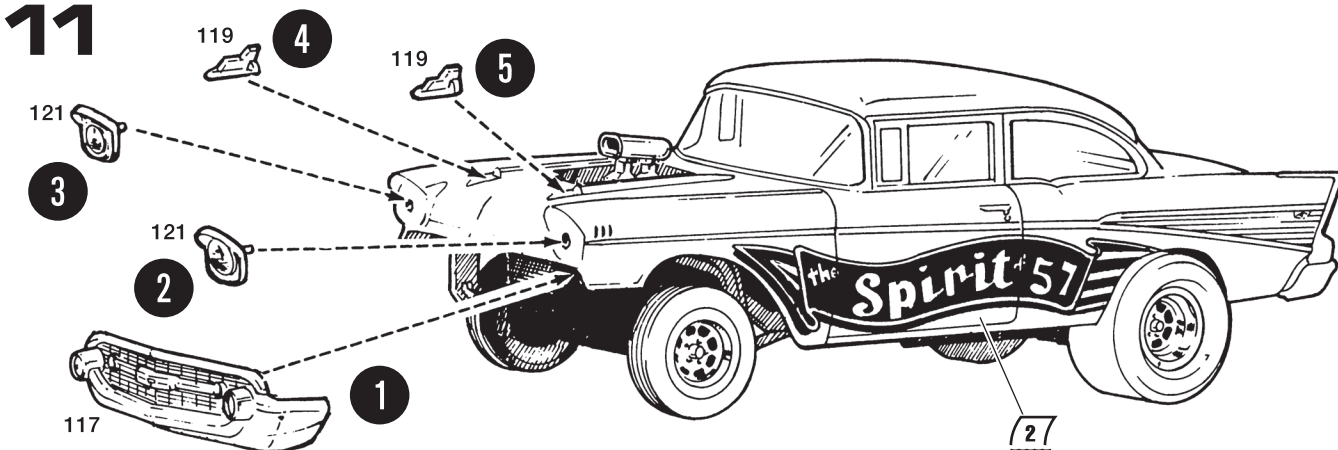
9



10



11



GENERAL MOTORS Trademarks used under license to Round 2, LLC. Goodyear (and wing foot design) and Eagle are trademarks of The Goodyear Tire & Rubber Company, Akron, Ohio USA used under license by Round 2, LLC. MPC is a registered trademark of Round 2, LLC. ©2018 Round 2, LLC, South Bend, IN 46628 USA. Product and packaging designed in the USA. Made in China. All rights reserved.