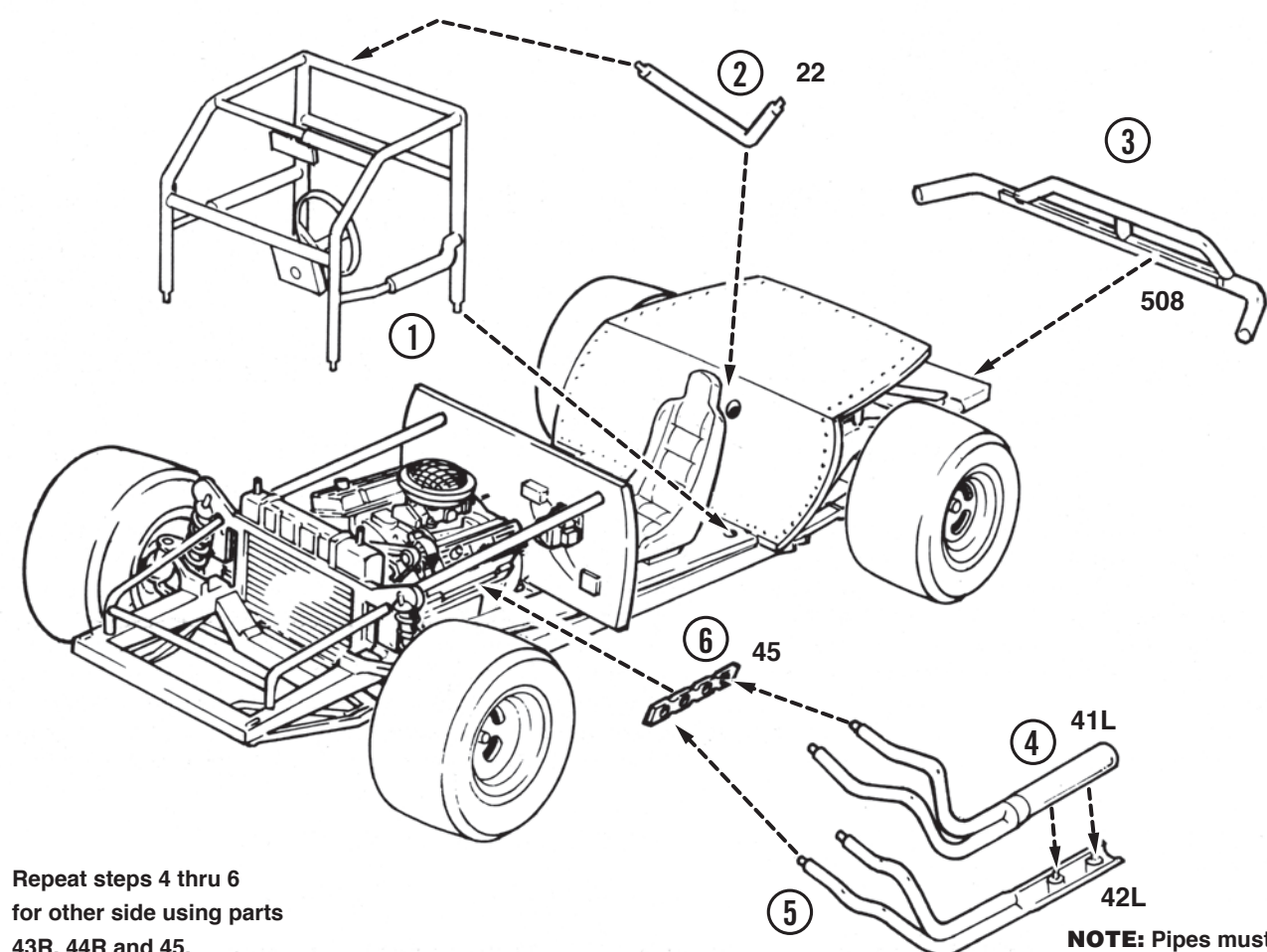


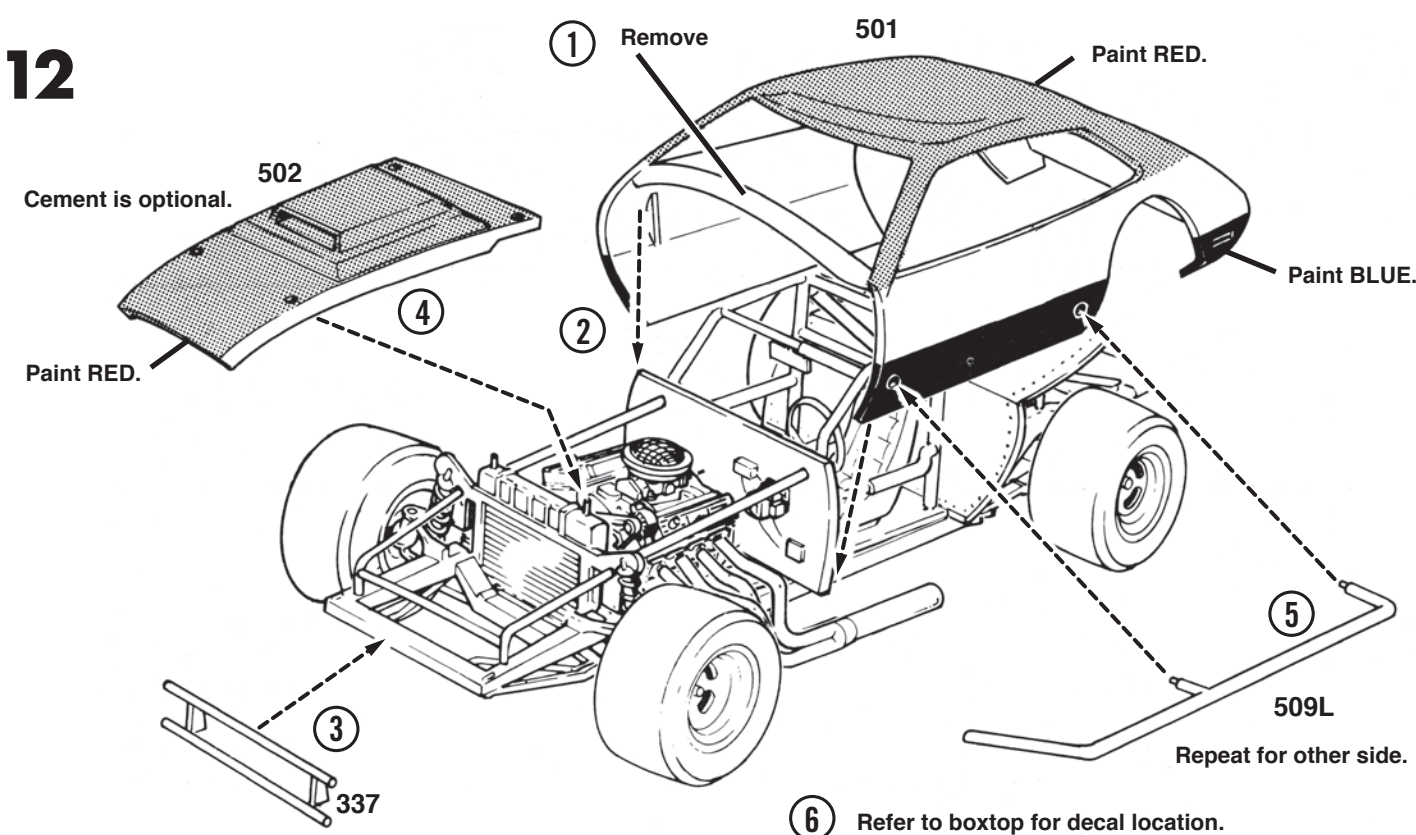
11



7 Repeat steps 4 thru 6 for other side using parts 43R, 44R and 45.

NOTE: Pipes must touch chassis.

12



Cement is optional.

Paint RED.

1 Remove

501

Paint RED.

Paint BLUE.

5

509L

Repeat for other side.

6 Refer to boxtop for decal location.

mpc

# RIDGE RUNNER

IMPORTANT: READ THIS FIRST!

Before you begin building, look over the instructions carefully. Following the procedure given, test-fit parts together without cementing. This way you will be more familiar with the location of parts when it becomes time to cement.

For removing small parts from the "runners" it is best to use a modeler's knife, do not attempt to "twist" them off.

The highest quality styrene plastic goes into the making of each MPC model. Only paint and cement made for styrene should be used. Before joining parts, trim off excess plastic or

"flash". Scrape plating from chromed parts where they are to be joined with other parts. Be careful not to get cement on exposed areas. To join parts, use cement sparingly. Apply cement to very small parts with a toothpick.

When painting your model it is best to cement all non-chromed accessories to the body and paint the whole unit at one time.

You should have no trouble assembling your kit if the instructions are followed properly.

ASSEMBLY NUMBERS

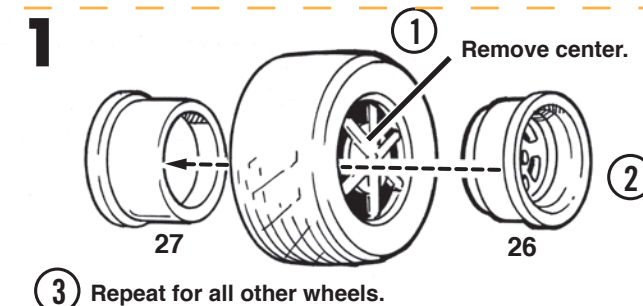
1

DO NOT CEMENT

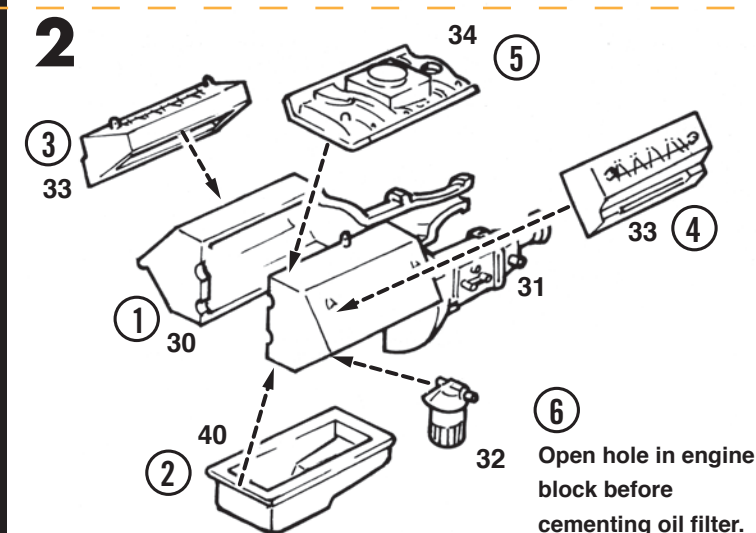
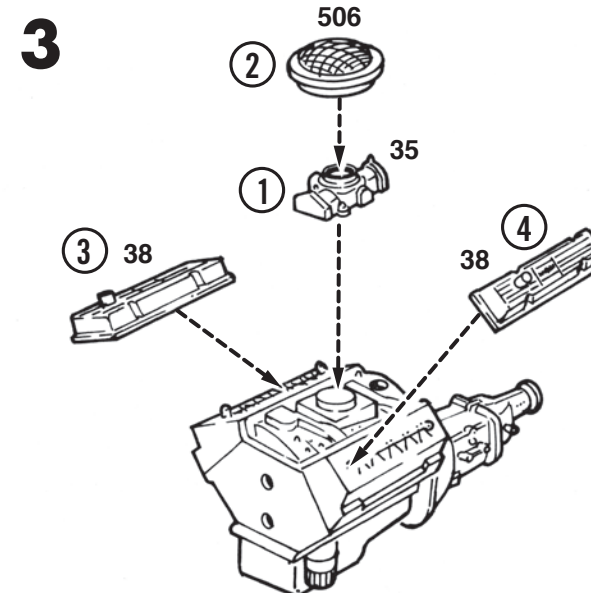
PART NUMBERS

6

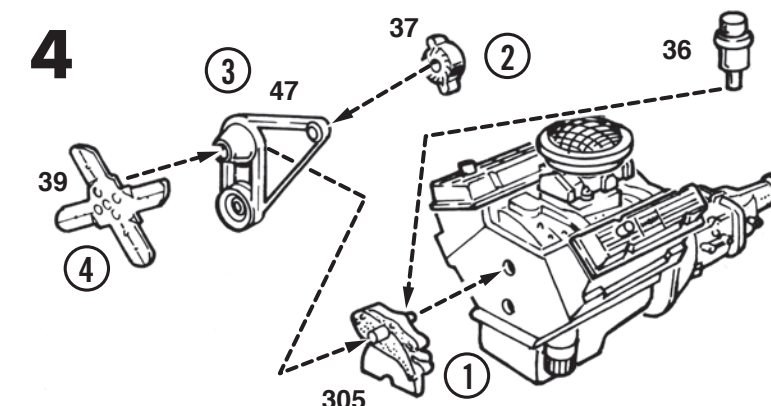
CEMENT



3 Repeat for all other wheels.



6 Open hole in engine block before cementing oil filter.



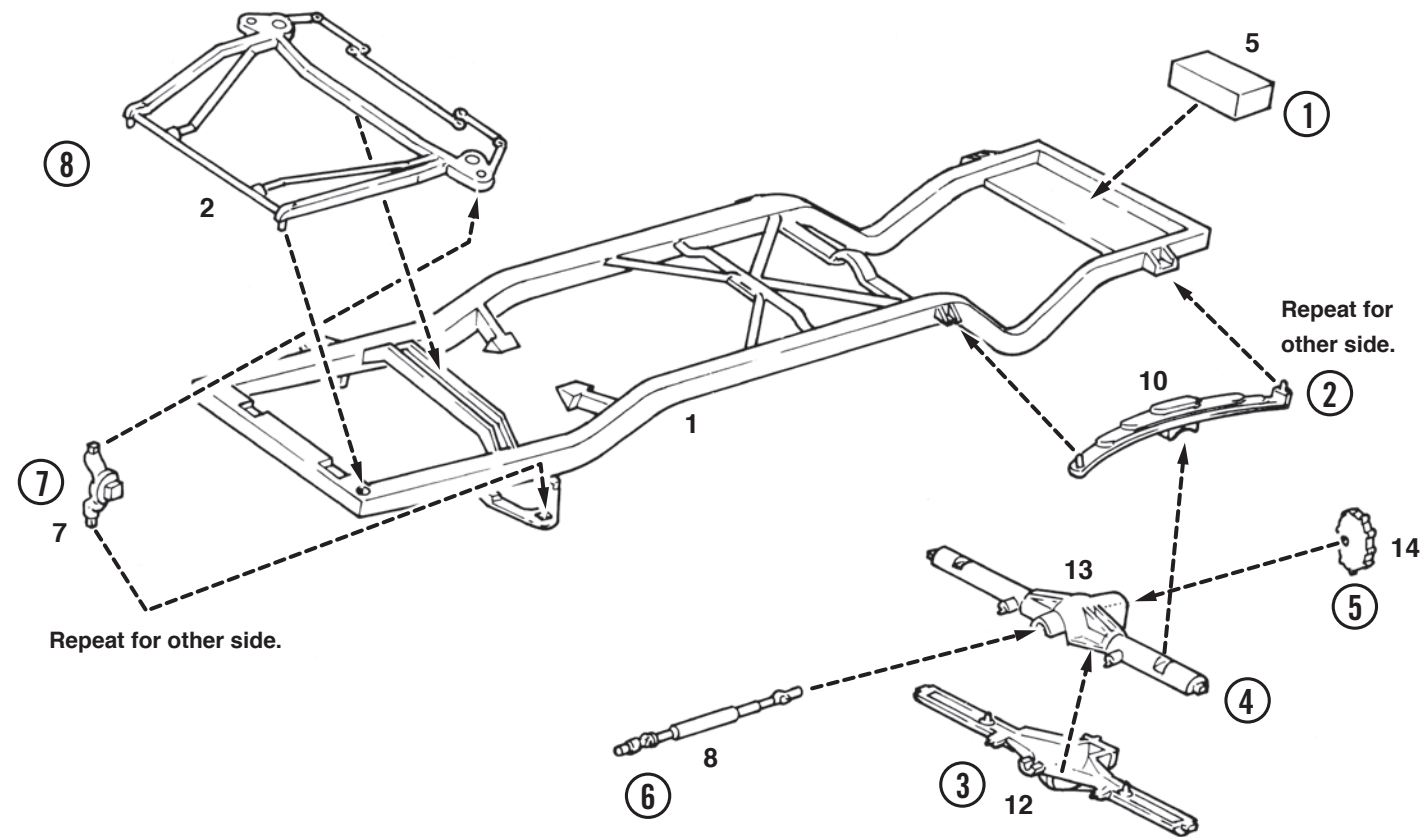
GOODYEAR

Goodyear (and wing foot design) and Eagle are trademarks of The Goodyear Tire & Rubber Company, Akron, Ohio USA used under license by Round 2, LLC. MPC and design and Round 2 and design are registered trademarks of Round 2, LLC. ©2019 Round 2, LLC, South Bend, IN 46628 USA. Product and packaging designed in the USA. Made in China. All rights reserved.

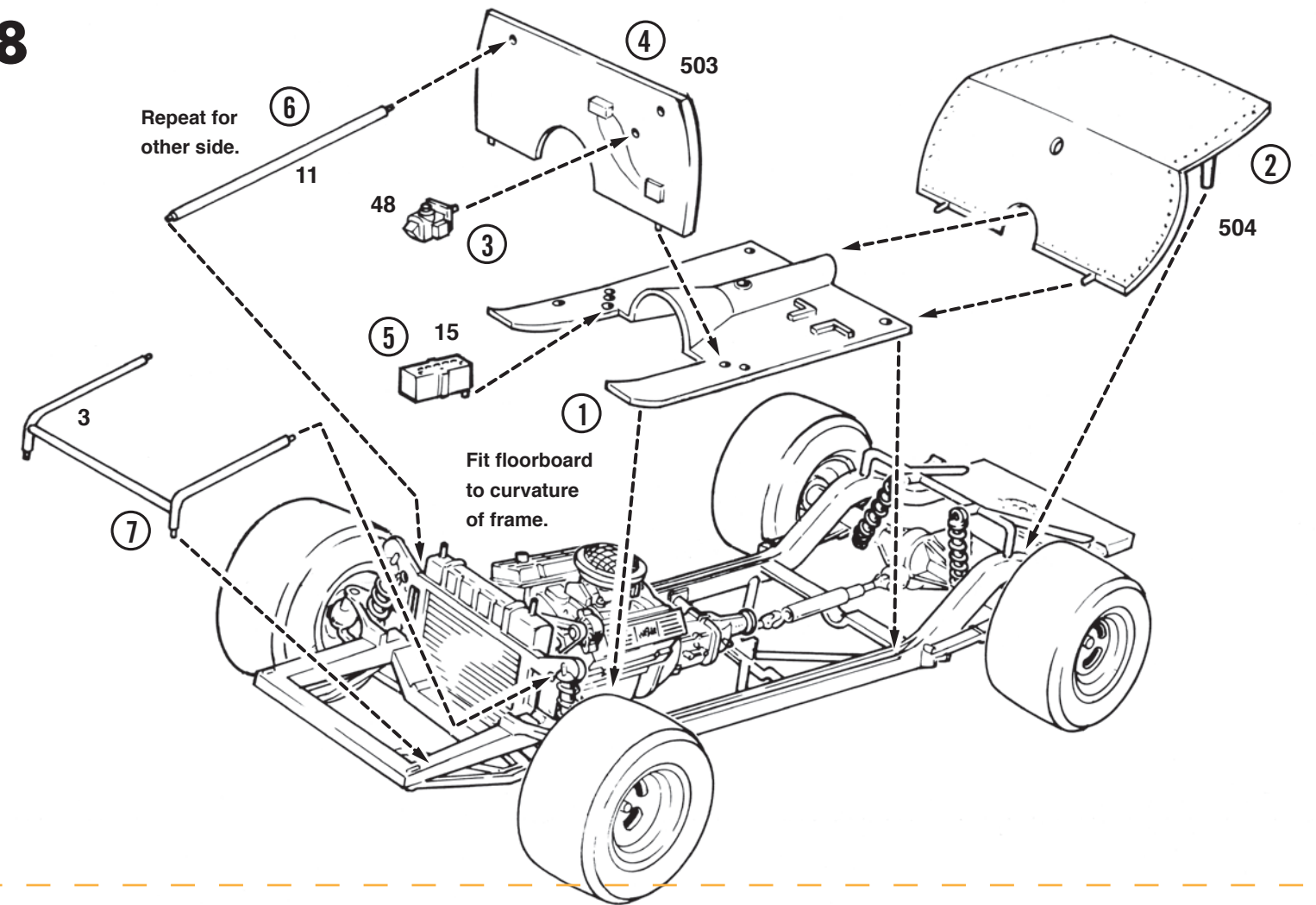
Goodyear (et la conception du pied d'aile) et Eagle sont des marques de commerce de The Goodyear Tire & Rubber Company, Akron, Ohio, États-Unis, utilisées sous licence par Round 2, LLC. MPC et ses conceptions sont des marques commerciales de Round 2, LLC. ©2019 Round 2, LLC, South Bend, IN 46628 États-Unis. Produit et emballage conçus aux États-Unis. Fabriqué en Chine. Tous droits réservés.



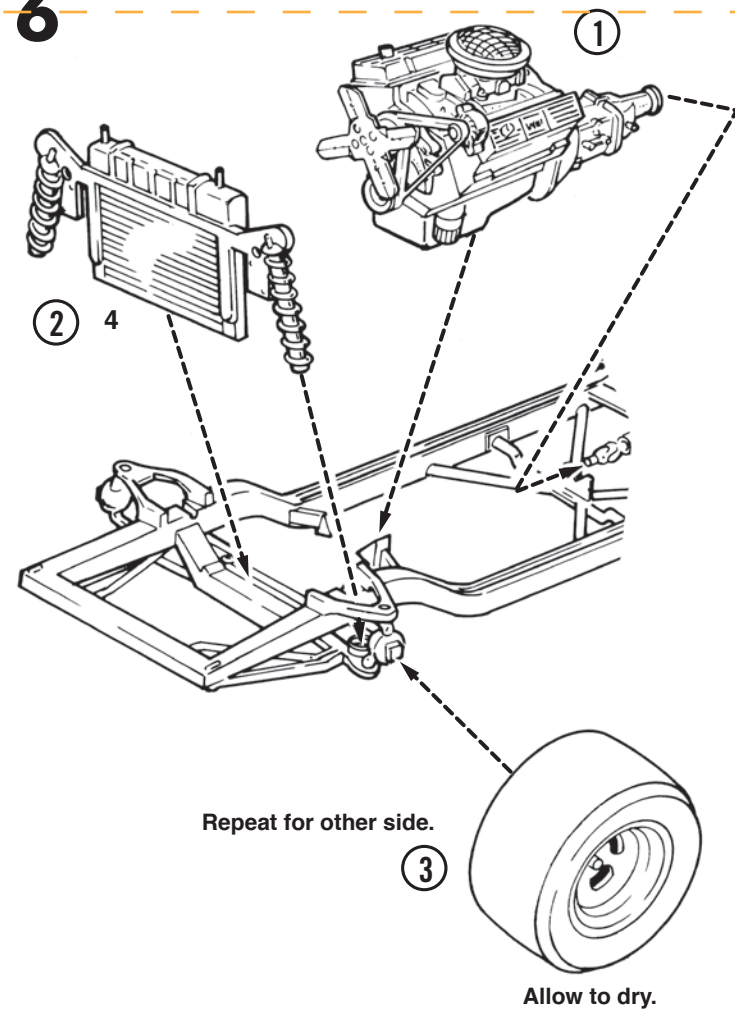
5



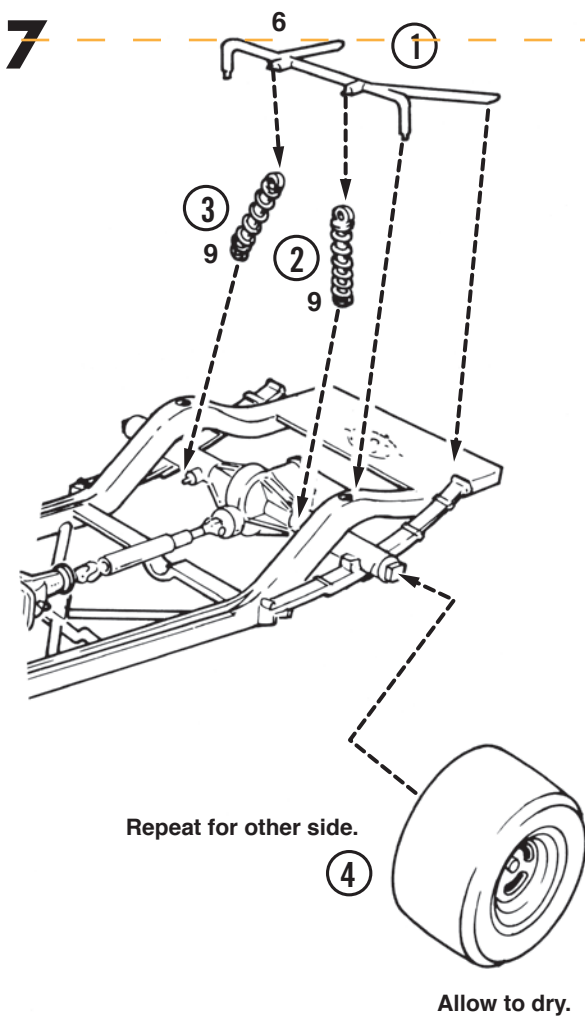
8



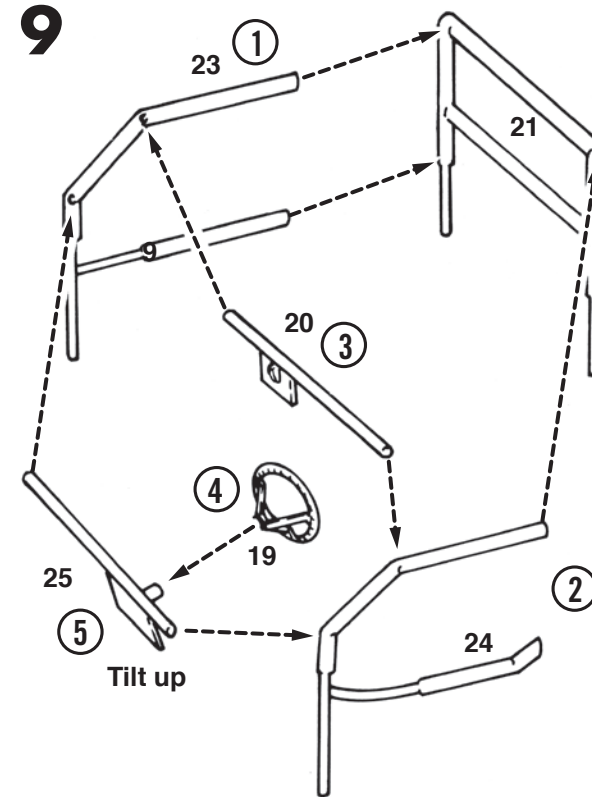
6



7



9



10

