

Big 1/8 Scale



M915-200

# Schwinn

## CONTINENTAL<sup>®</sup> 10-Speed Racer

### READ THIS BEFORE YOU BEGIN.

Before you begin building, look over the instructions carefully. Following the procedure given, test-fit parts together without cementing. This way you will be more familiar with the location of parts when it become time to use cement.

For removing small parts from the "runners" it is best to use a modelers knife, do not attempt to "twist" them off.

When painting your model it is best to cement all non-chromed accessories to the body and paint the whole unit at one time.

The highest quality styrene plastic goes into the making of each MPC model. Only paint and cement made for styrene should be used. Before joining parts, trim off excess plastic or "flash". Scrape plating from chromed parts where they are to be joined with other parts. Be careful not to get cement on exposed areas. To join parts, use cement sparingly. Apply cement to very small parts with a toothpick.

You should have no trouble assembling your kits if the instructions are followed properly. The parts are numbered in order of assembly.



PLATED



NON-PLATED

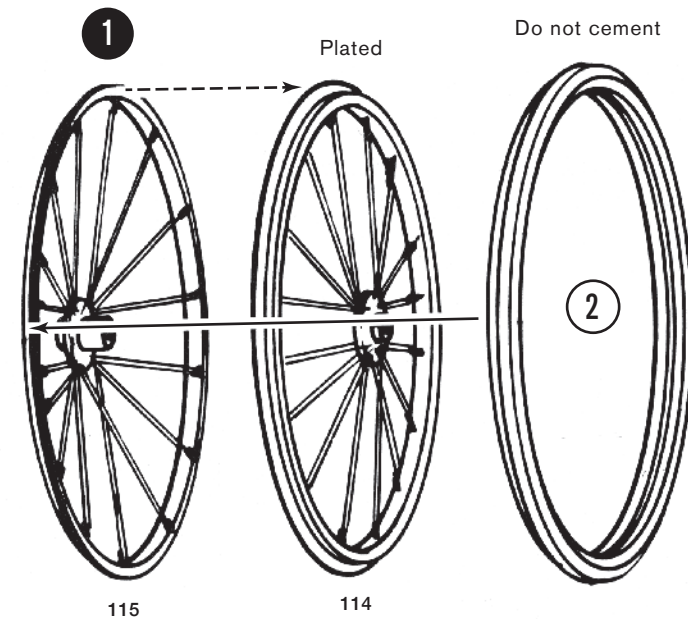
8 PART NUMBERS



OPTIONAL

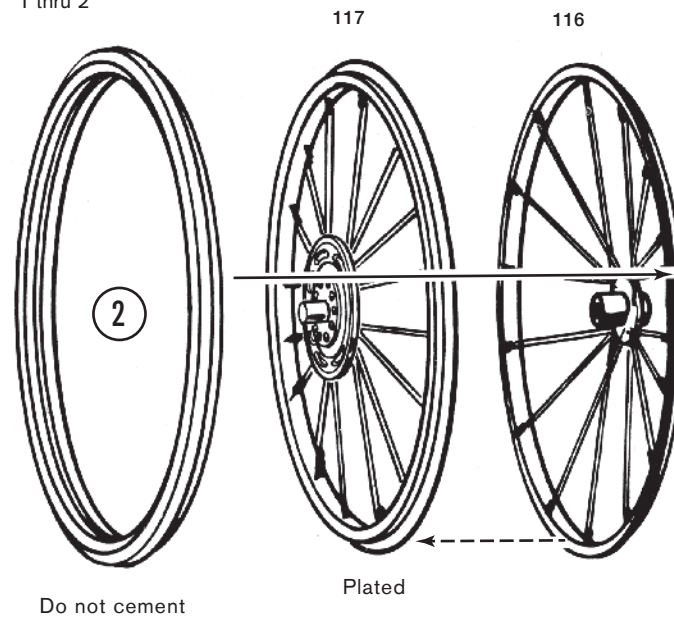
1  
1 thru 2

A



B

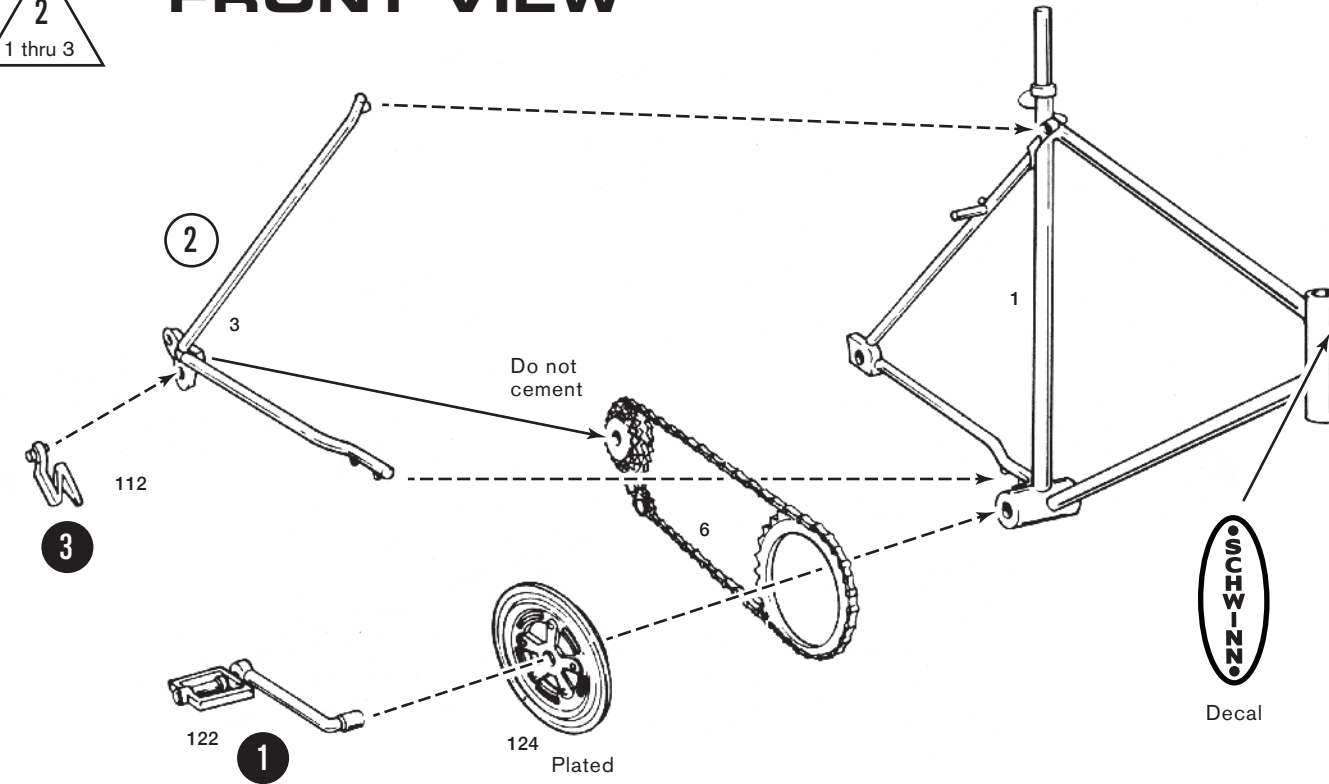
1 thru 2



REAR

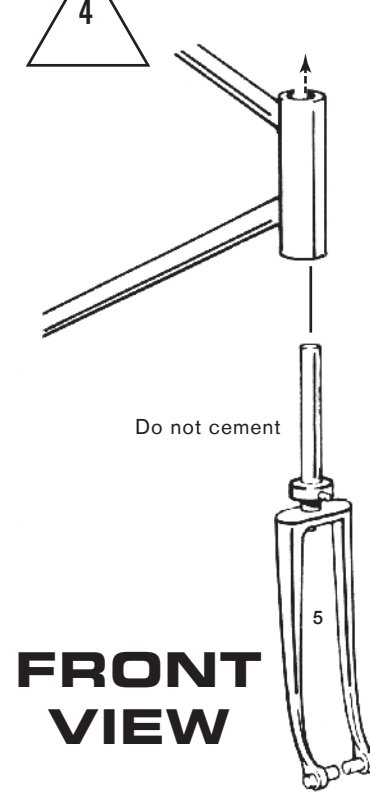
2  
1 thru 3

FRONT VIEW

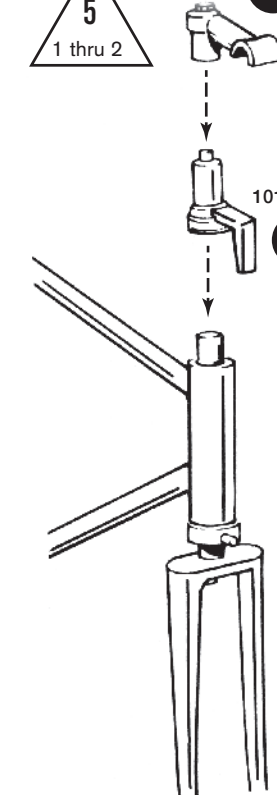


4

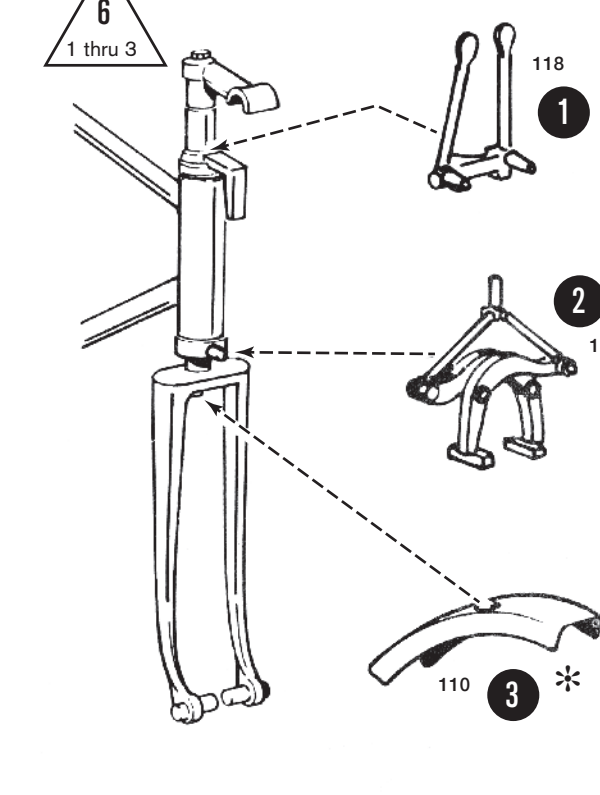
FRONT VIEW



5  
1 thru 2

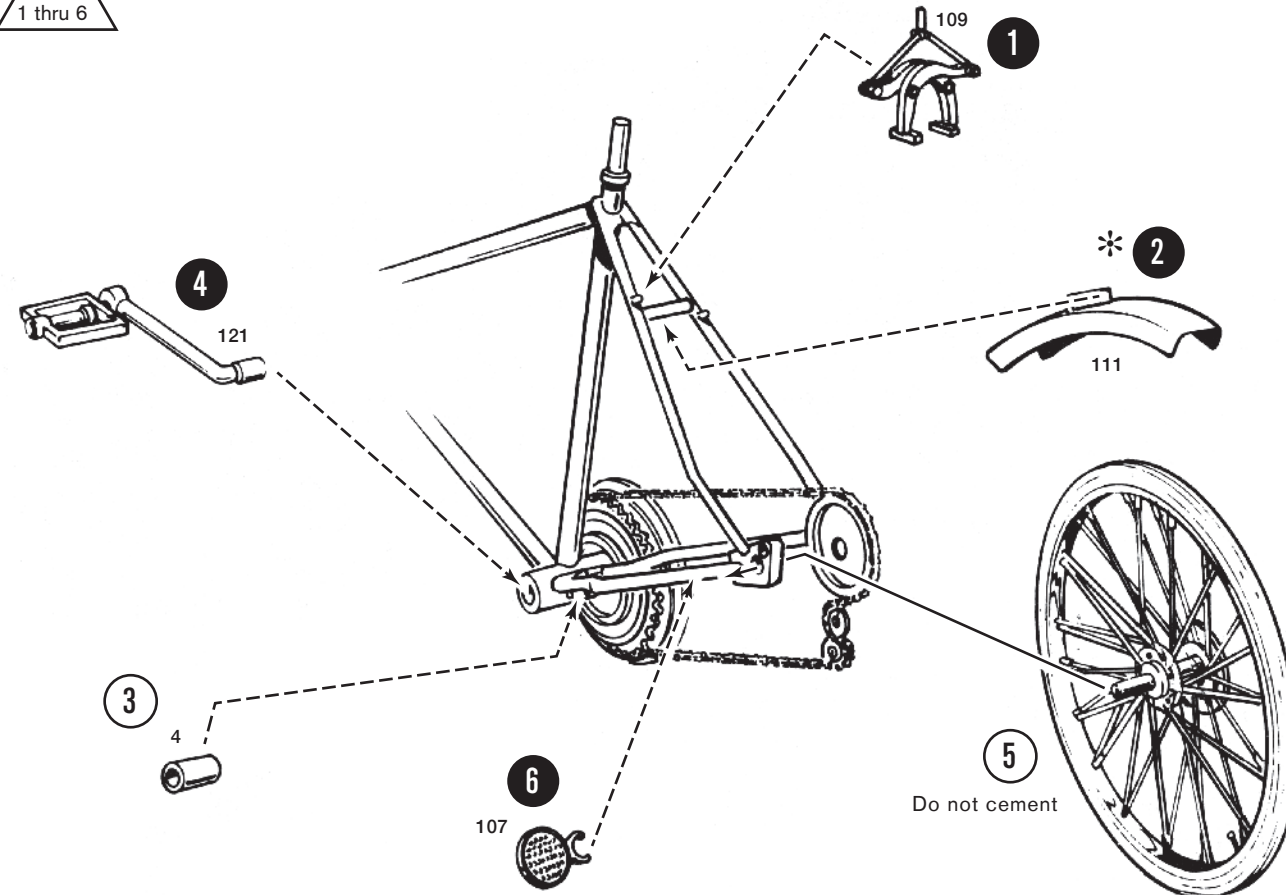


6  
1 thru 3



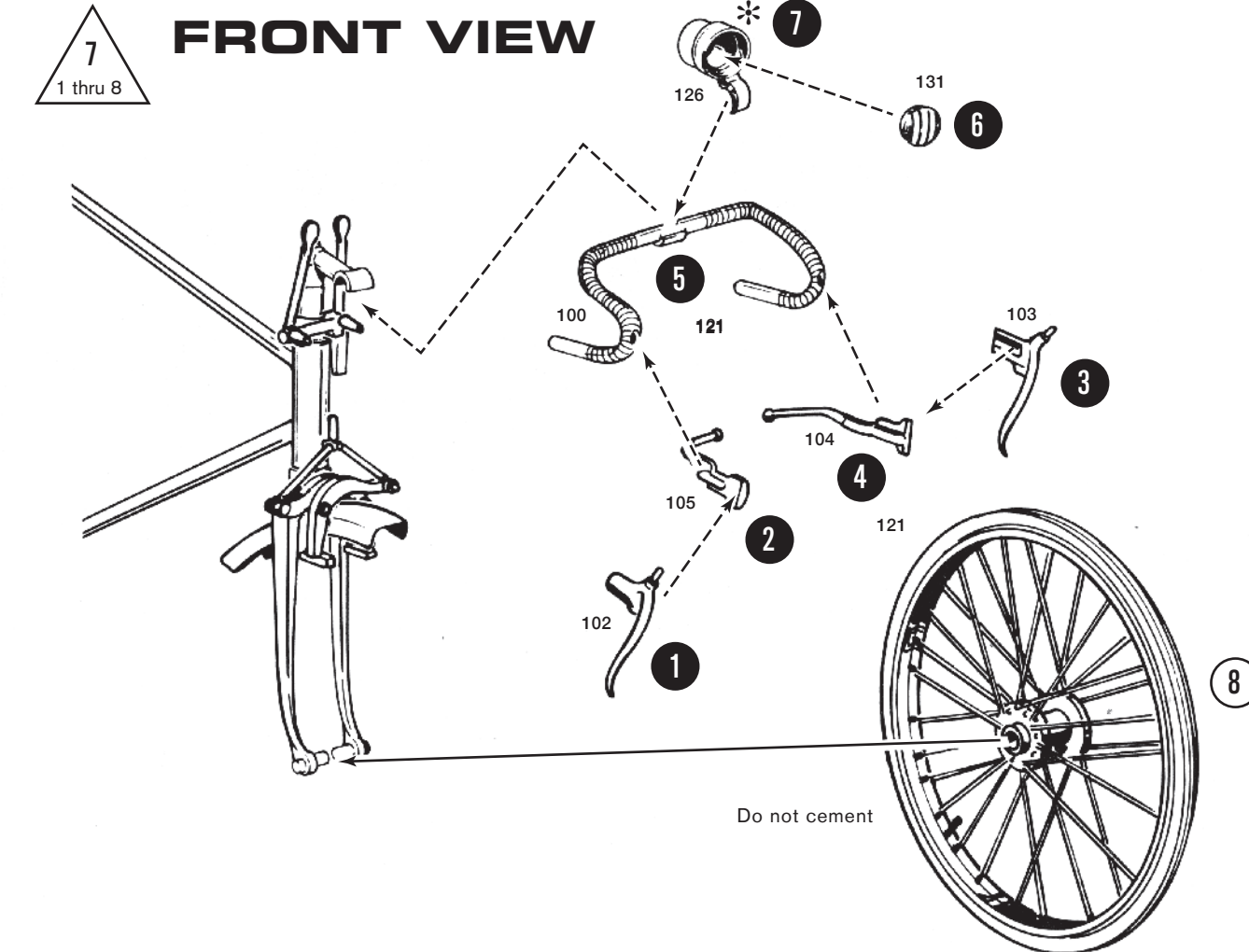
3  
1 thru 6

REAR VIEW

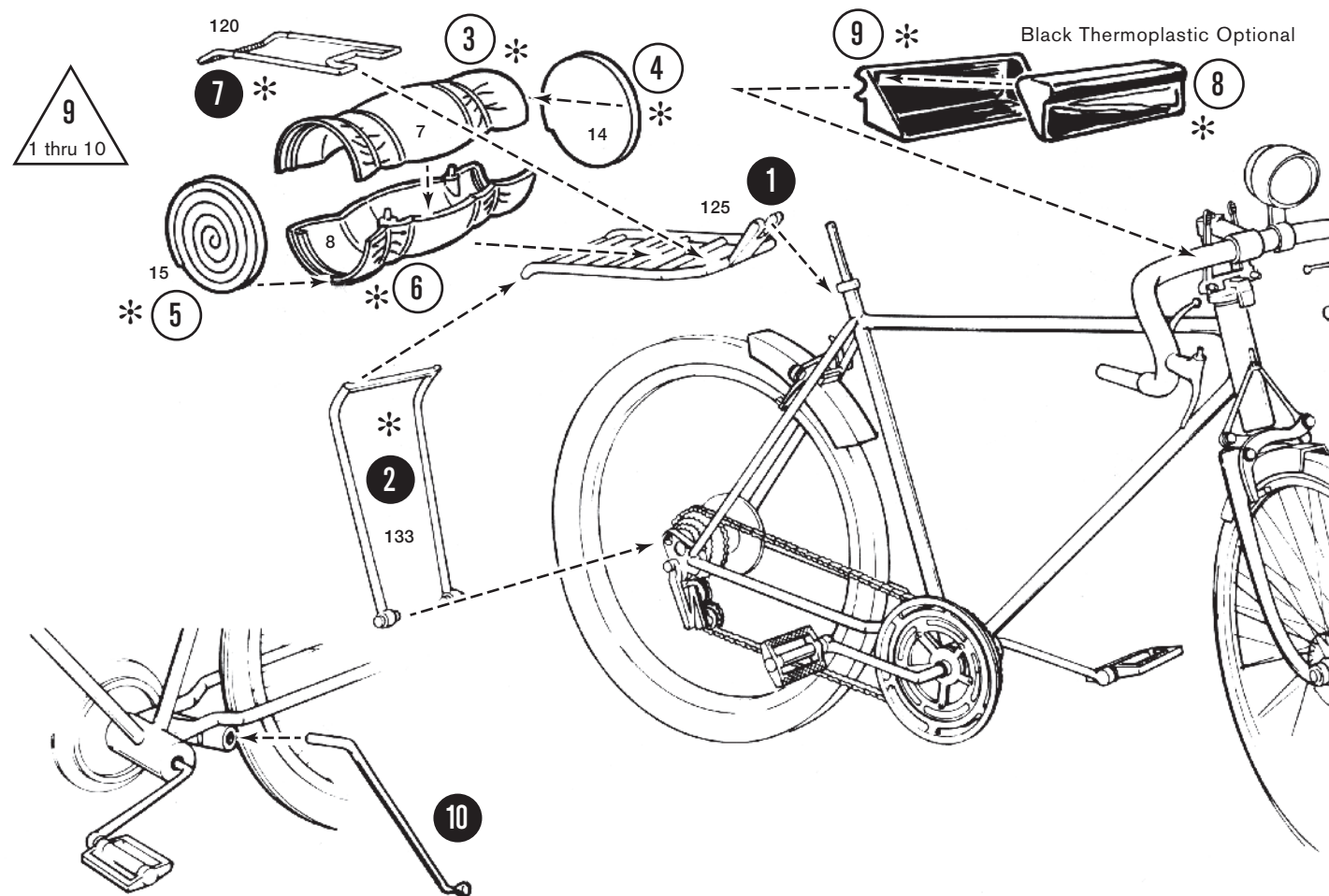
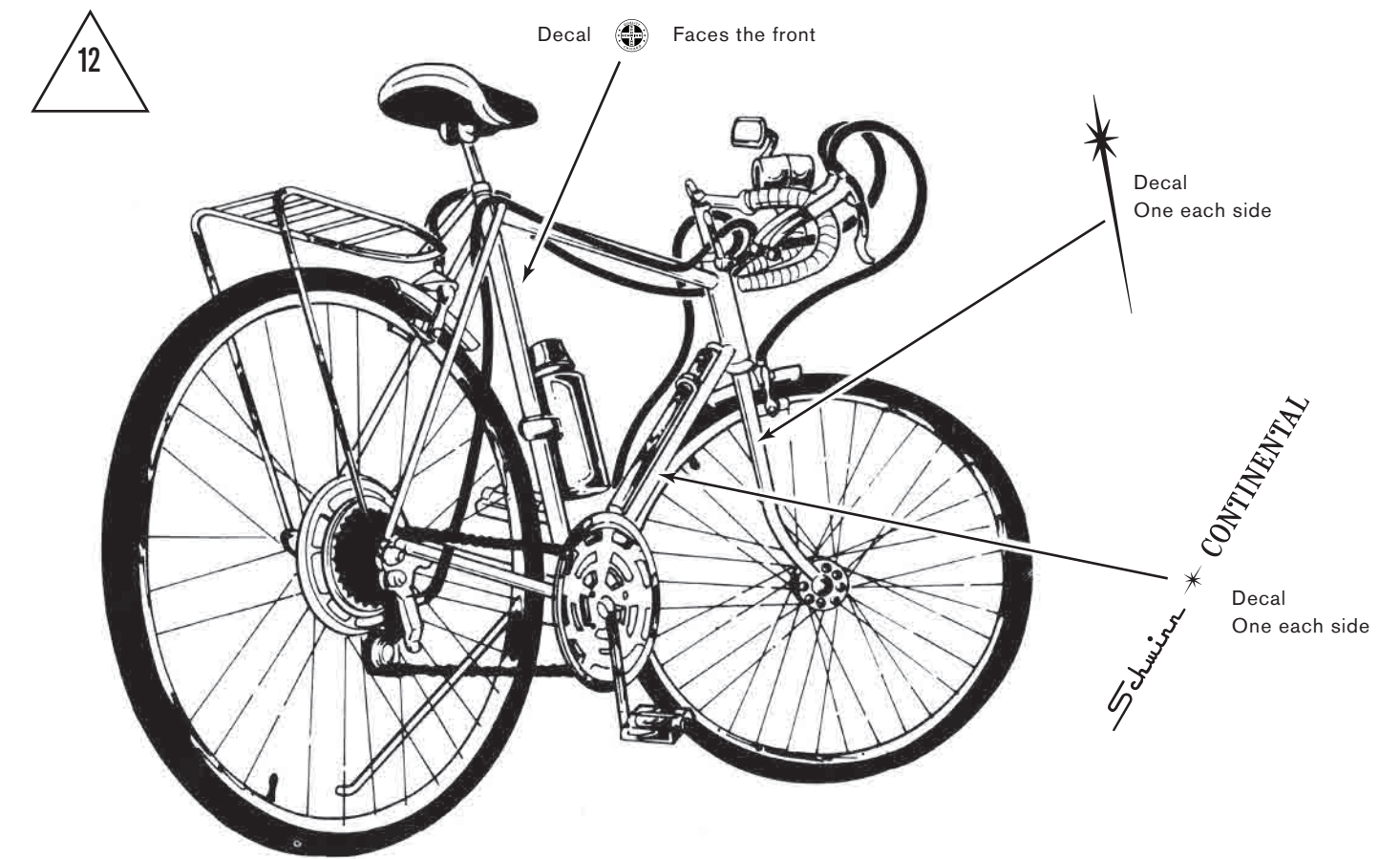
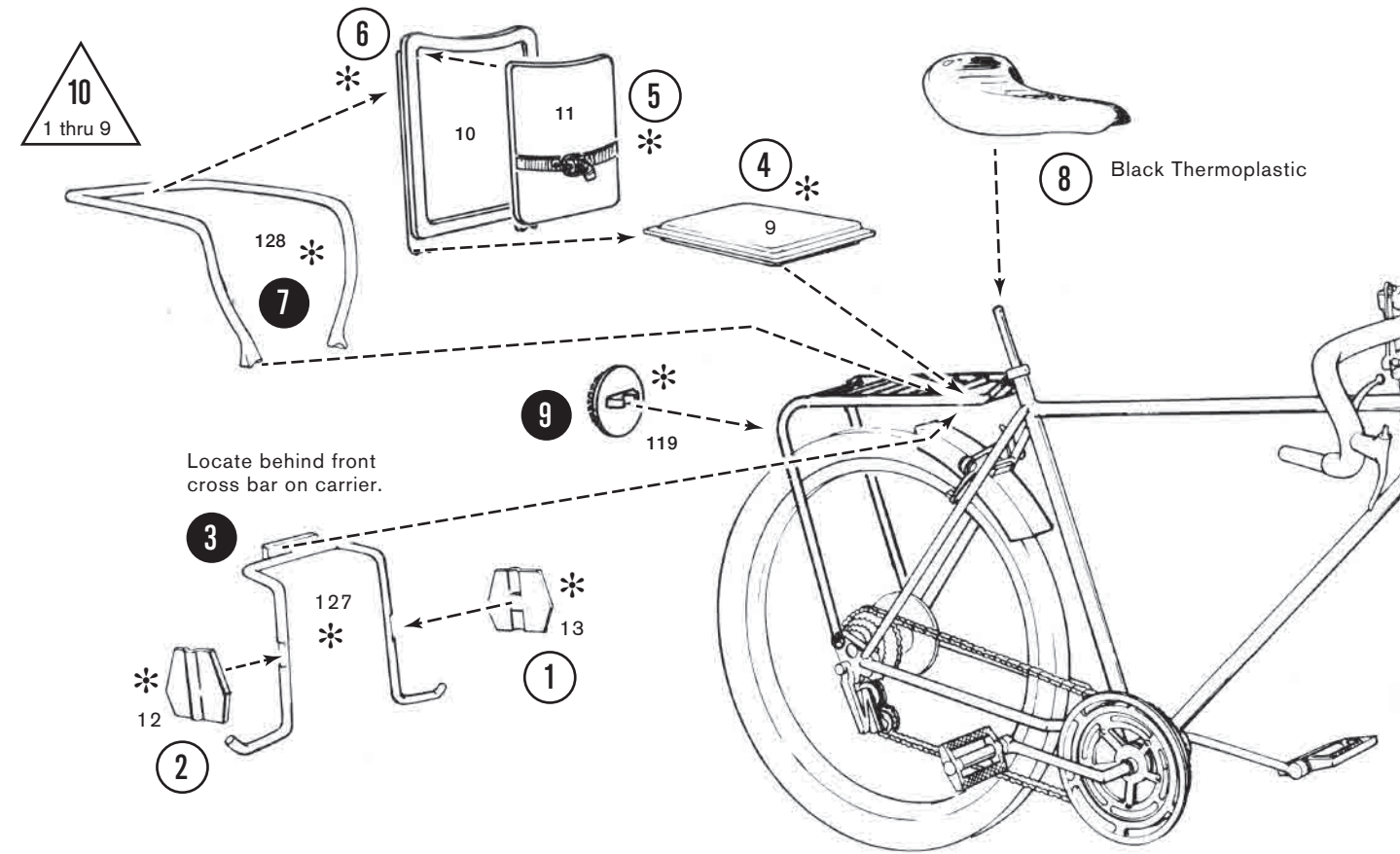
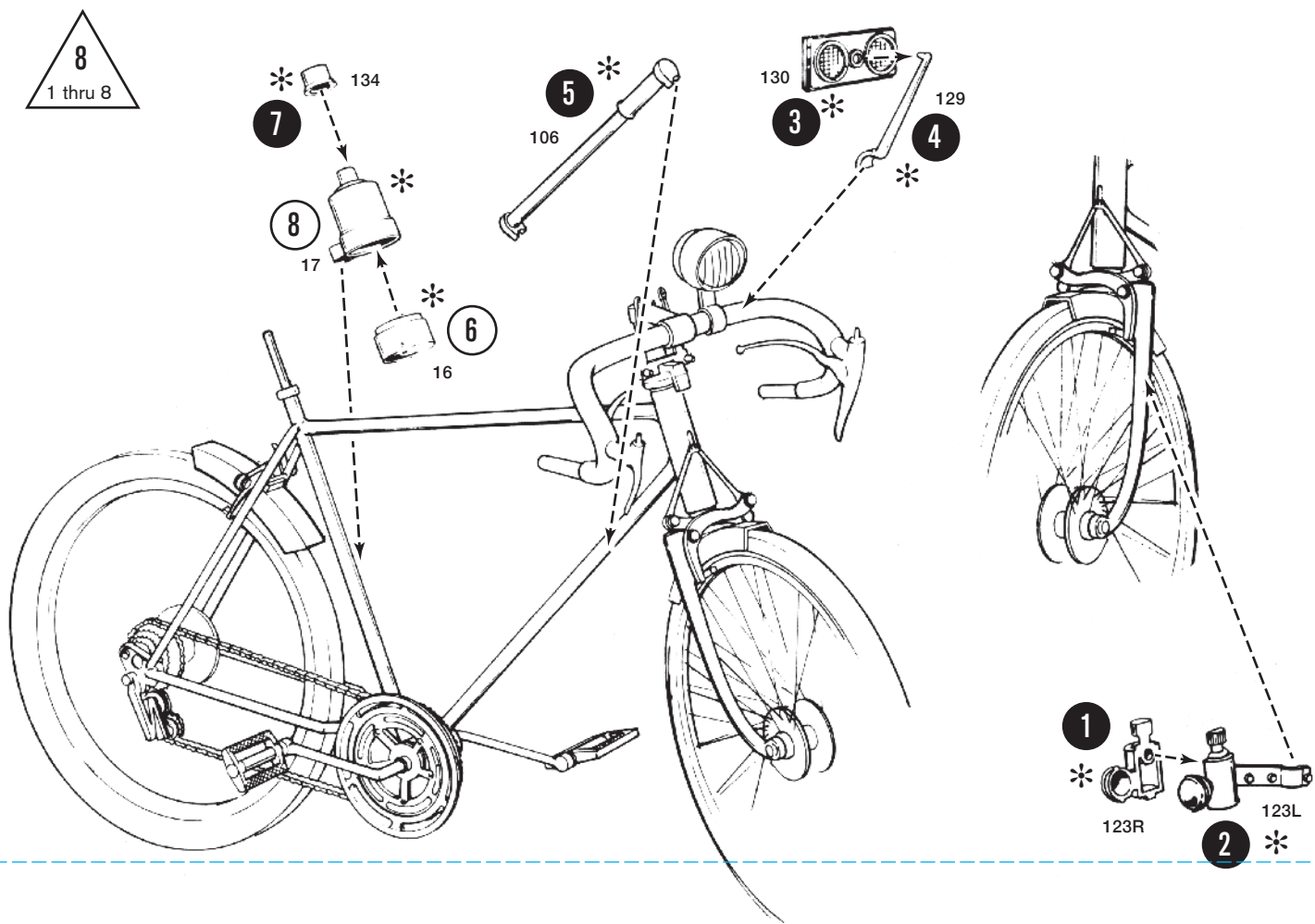


7  
1 thru 8

FRONT VIEW

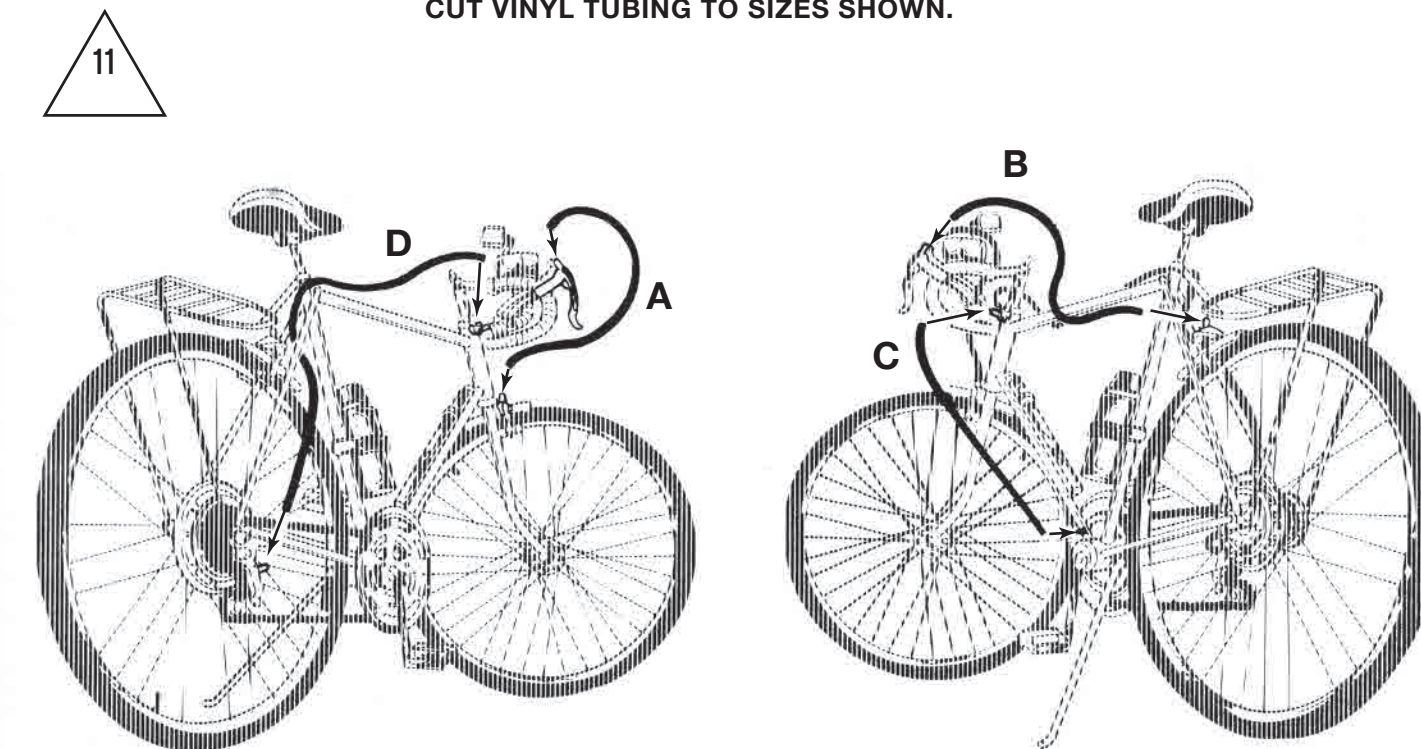






A Front hand brake cable.  
 B Rear hand brake cable.  
 C Front gear changer cable.  
 D Rear gear changer cable.

CUT VINYL TUBING TO SIZES SHOWN.



LOOK FOR MPC's GREAT 1/8 SCALE KIT OF THE...

# Schwinn STING-RAY CLASSIC KRATE

Available molded in 3 of the original authentic Schwinn colors!

- Lemon Peeler Yellow
- Apple Krate Red
- Orange Krate



Kit number MPC914/12